

**PONCHO · TREFILI, SILKHAIR,
IMAGINE & CERTO**

Design 04 – Sommerideen 01

PONCHO · TREFILI, SILKHAIR, IMAGINE & CERTO

Design 04 – Sommerideen 01



Size One size

Materials: 100 g of Lana Grossa **Trefili** (62% cotton, 26% viscose, 12% linen; 160 m/50 g) in Cream/Light Grey (**col 11**); 50 g of Lana Grossa **Silkhair** (70% superkid mohair, 30% silk; 210 m/25 g) in Grey Green (**col 105**); 100 g of Lana Grossa **Imagine** (50% cotton (GRS), 50% recycled PET (polyester GRS); 120 m/50 g) in Light Grey (**col 21**); 100 g of Lana Grossa **Certo** (100% GOTS cotton; 115 m/50 g) in Pink/Yellow/Grey/Natural (**col 102**). Size 5.5 mm circular needle, 100 cm long; size 4.5 mm crochet hook.

Selvage stitches: On every row: Sl first st kwise, k last st.

Main patt: Work according to chart. Numbers at right edge of chart indicate RS rows, numbers at left edge of chart indicate WS rows. Letters at right edge of chart indicate yarn used: **C** = Certo; **I** = Imagine; **2xS** = 2 strands Silkhair held tog; **T** = Trefili. Work to patt rep, work 2 sts between arrows for patt rep, work to end of chart. Work rows 1 – 104 once.

Gauge: 12.5 sts and 21.5 rows = 10 x 10 cm in main patt on size 5.5 mm needles.

Back: With size 5.5 mm circular needle and Certo cast on 118 sts. Work rows 1 – 18 of main patt chart. Next row (RS): With Trefili, work chart row 19, increasing 8 sts evenly across row = 126 sts. Work chart rows 20 – 32. Next row (RS): Work chart row 33, decreasing 8 sts evenly across row = 118 sts. NOTE: Rep row 19 incs on chart row 73, rep row 33 decs on chart row 94 (a WS row). Work to end of chart, ending with chart row 104 and piece meas approx. 48.5 cm from cast-on. Bind off all sts.

Front: Work same as back.

Finishing: Pin pieces to measurements and block. Beg at shoulder edge, sew right shoulder seam over 20 cm, sew left shoulder seam over 32 cm, leaving rem 40 cm open for neck. Beg at bottom edge, sew side seams over 27.5 cm, leaving top 21 cm open for armholes. Armhole edging: With size 4.5 mm crochet hook, Certo and RS facing, sc around each armhole edge. Bottom edging: With size 4.5 mm crochet hook, Certo and WS facing, sc around bottom edge of back and front.

PONCHO · TREFILI, SILKHAIR, IMAGINE & CERTO

Design 04 – Sommerideen 01

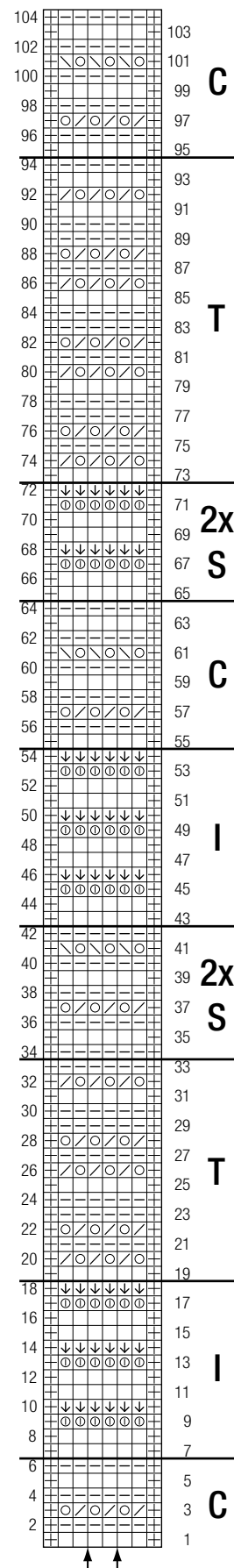


Chart key:

- = selvage st
- = k1
- = p1
- = k1, yo
- = k1, dropping yo and pulling st up to elongate
- = yo
- = k2tog
- = skp: sl 1 kwise, k1, pass slipped st over knitted st

Chart

		20		40		32		
3,5		C						—
8,5		Back and front T						21
5,5		2x S						—
3,5		C						—
7		I						—
5		2x S						27,5
6		T						—
7		I						—
2,5		C						—
				92				



Gauge Swatch

Before you begin ...

...make a gauge swatch. Use the recommended needles, yarns and pattern stitch for your gauge swatch. It should measure approx. 12 cm x 12 cm. Cast-on and bind-off rows, as well as selvage stitches should not be included in the measurement. Pin your swatch and block it as you would the finished pieces of the garment. Count stitches and rows over 10 cm. If your gauge swatch is too small, switch to larger needles. If your gauge swatch is too big, switch to smaller needles.



Abbreviations

beg = begin(ning) · **ch** = chain · **cont** = continue · **dec** = decreas(e)(ing) · **inc** = increas(e)(ing) · **k** = knit · **kwise** = as if to knit
meas = measures · **M1L** = lift strand between sts from front to back and knit this strand through the back loop · **M1R** = lift strand between sts from the back and knit this strand through the front loop · **patt** = pattern · **pm** = place marker · **p** = purl
pwise = as if to purl · **rem** = remain(ing) · **rep** = repeat(s) · **rev St st** = reverse stockinette stitch · **rnd(s)** = round(s) · **RS** = right side · **sc** = single crochet · **skp** = slip 1 stitch as if to knit, knit 1 stitch, pass slipped stitch over knitted stitch · **sk2p** = slip 1 stitch as if to knit, knit 2 together, pass slipped stitch over knitted stitch · **s2kp** = slip 2 stitches as if to knit, k 1 stitch, pass slipped stitches over knitted stitch · **sl** = slip · **st(s)** = stitch(es) · **St st** = stockinette stitch · **tbl** = through the back loop · **tog** = together · **wyib** = with yarn in back of work · **wyif** = with yarn in front of work · **WS** = wrong side · **yo(s)** = yarn over(s)

Publisher's Info

Publisher: Lana Grossa GmbH, Gaimersheim, www.lanagrossa.com

Photographer: Herbert Dehn