



www.lanagrossa.com

PILLOW COVER ABOUT BERLIN BULKY

Design 21 – Sommerideen 01

PILLOW COVER

ABOUT BERLIN BULKY

Design 21 – Sommerideen 01



Size approx. 36 x 60 cm

Materials: 400 g of Lana Grossa **About Berlin Bulky** (50% cotton, 50% Micromodal; 47 m/50 g) in Light Grey (**col 6**). Size 10 mm circular needle, 80 cm long; one 40 x 60 cm pillow form.

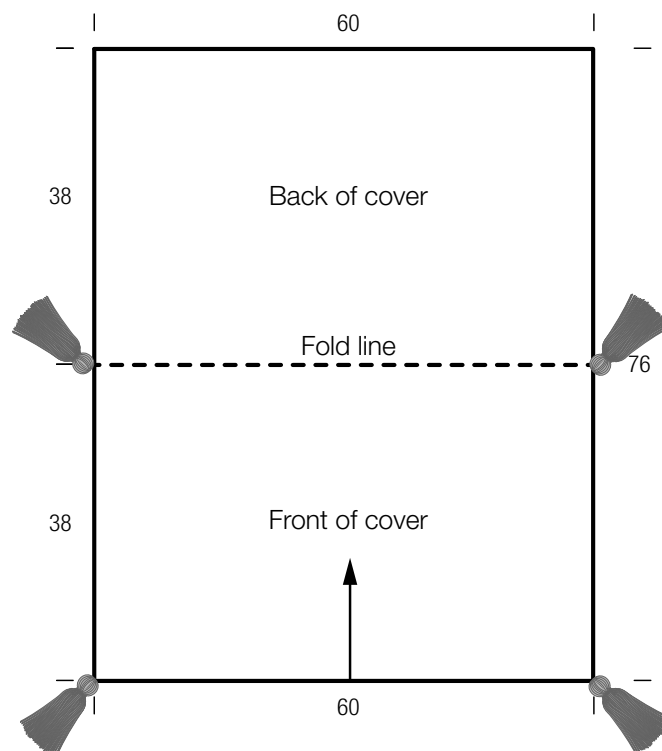
Selvage stitches: On every row: Sl first st kwise, k last st.

Garter st: K every row.

Gauge: 9.5 sts and 19.5 rows = 10 x 10 cm in garter st on size 10 mm needles.

Cover: With size 10 mm circular needle cast on 60 sts. Working first and last st as selvage sts throughout work in garter st for 70 rows and piece meas 36 cm from cast-on. Place marker in first and last st on last WS row to indicate end of front/beg of back. Cont in garter st for 70 more rows and piece meas 36 cm from markers. Loosely bind off all sts.

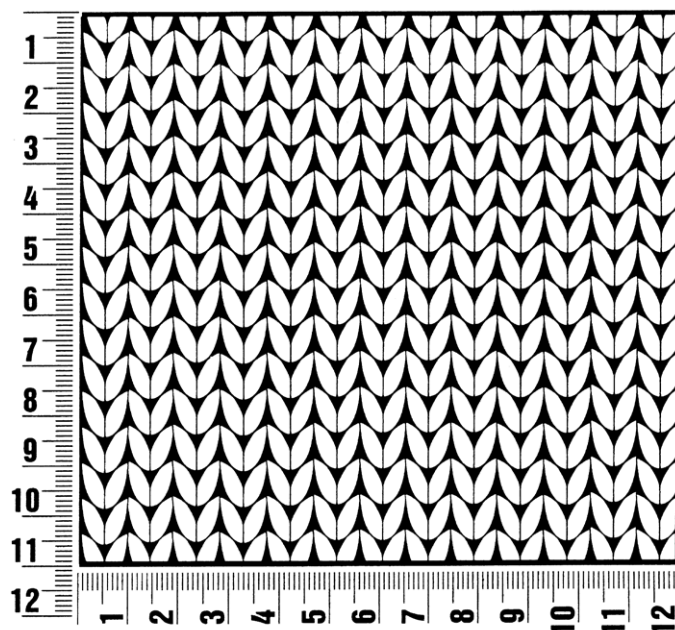
Finishing: Pin piece to measurements and block. Fold piece in half at markers [see fold line on schematic]. With RS facing and mattress st, sew side seams. Insert pillow form. Close bottom seam. Make four tassels. Sew tassels to corners of cover.



Gauge Swatch

Before you begin ...

...make a gauge swatch. Use the recommended needles, yarns and pattern stitch for your gauge swatch. It should measure approx. 12 cm x 12 cm. Cast-on and bind-off rows, as well as selvage stitches should not be included in the measurement. Pin your swatch and block it as you would the finished pieces of the garment. Count stitches and rows over 10 cm. If your gauge swatch is too small, switch to larger needles. If your gauge swatch is too big, switch to smaller needles.



Abbreviations

beg = begin(ning) · **ch** = chain · **cont** = continue · **dec** = decreas(e)(ing) · **inc** = increas(e)(ing) · **k** = knit · **kwise** = as if to knit
meas = measures · **M1L** = lift strand between sts from front to back and knit this strand through the back loop · **M1R** = lift strand between sts from the back and knit this strand through the front loop · **patt** = pattern · **pm** = place marker · **p** = purl
pwise = as if to purl · **rem** = remain(ing) · **rep** = repeat(s) · **rev St st** = reverse stockinette stitch · **rnd(s)** = round(s) · **RS** = right side · **sc** = single crochet · **skp** = slip 1 stitch as if to knit, knit 1 stitch, pass slipped stitch over knitted stitch · **sk2p** = slip 1 stitch as if to knit, knit 2 together, pass slipped stitch over knitted stitch · **s2kp** = slip 2 stitches as if to knit, k 1 stitch, pass slipped stitches over knitted stitch · **sl** = slip · **st(s)** = stitch(es) · **St st** = stockinette stitch · **tbl** = through the back loop · **tog** = together · **wyib** = with yarn in back of work · **wyif** = with yarn in front of work · **WS** = wrong side · **yo(s)** = yarn over(s)

Publisher's Info

Publisher: Lana Grossa GmbH, Gaimersheim, www.lanagrossa.com

Photographer: Herbert Dehn