



www.lanagrossa.com

SHAWL · LACE SETA MULBERRY

Design 01 – Tücher & Co. 04

SHAWL · LACE SETA MULBERRY

Design 01 – Tücher & Co. 04



Size 50 x 200 cm

Materials: 250 g of Lana Grossa **Lace Seta Mulberry** (35% Mulberry silk, 35% baby Alpaca, 30% superfine Merino wool; 175 m/50 g) in Plum (**col 5**), 150 g in Salmon (**col 8**) and 100 g in Grey (**col 14**). Size 3.5 mm circular needle, 120 cm long; size 3.5 mm crochet hook.

Two-color brioche rib: Work according to chart. Multiple of 2 + 1 + 2 selvage sts (not shown on chart). Numbers at right edge of chart indicate RS rows, numbers at left edge of chart indicate WS rows. 2 RS rows and 2 WS rows are worked successively. After having worked 1 of the 2 RS [WS] rows, sts are slid to other end of circular needle, where appropriate color is ready to be worked. Work rows 1 and 2 once, then rep rows 3 – 18. **Note:** 1 stitch and 1 yo are treated as 1 stitch.

Slip stitch selvage: On RS row: Ktbl first st, sl last st pwise wyib; on WS row: Ptbl first st, sl last st pwise wyif. Work first and last st as a slip stitch selvage throughout.

Gauge: 16.5 sts and 54 rows = 10 x 10 cm in two-color brioche rib on size 3.5 mm needles.

Shawl: With size 3.5 mm circular needle and Plum cast on 112 sts, then with Salmon cast on 218 sts = 330 cast-on sts. NOTE: Twist yarns around each other at color change to prevent holes. Row 1 (RS): Slip st selvage, work row 1 of two-col brioche rib chart to last st, slip st selvage. Maintaining selvage sts, cont to follow chart through row 4, ending with a WS row.

Next RS (shaping) row: Slip st selvage, k2tog, work chart row 5 to last st, M1R, slip st selvage = st count remains the same. Maintain selvage sts, cont to foll chart and rep shaping row every 4th row. When piece meas 50 cm from cast-on, bind off all sts in appropriate color.

Finishing: Pin piece to measurements and block. With size 3.5 mm crochet hook and Plum, work 1 row sc along color change on RS and WS of shawl.

Chart

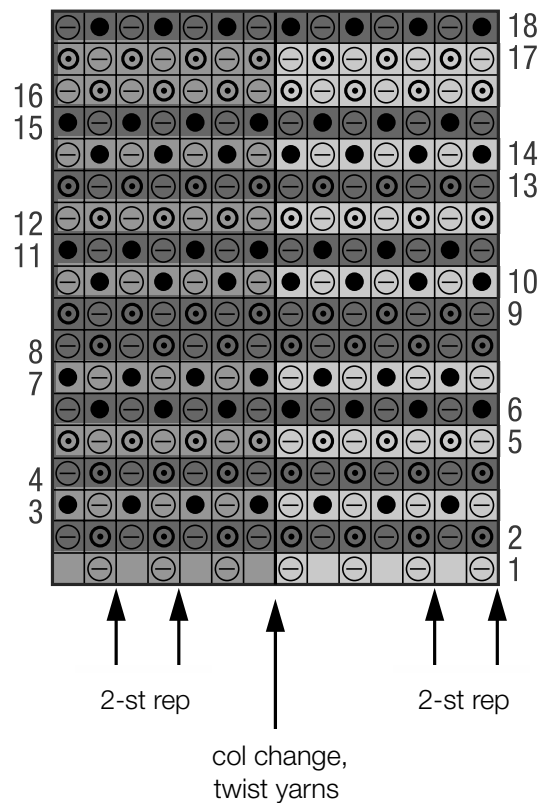
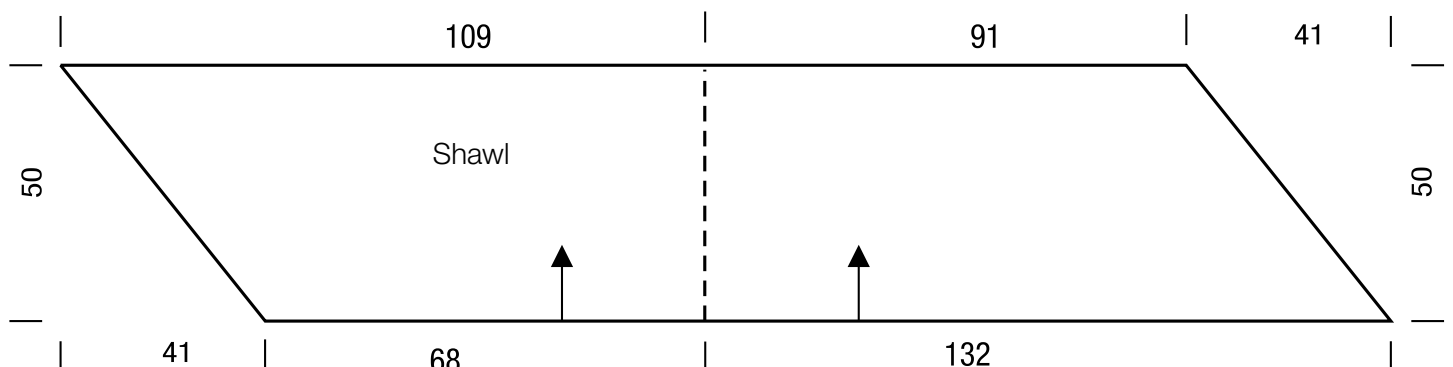


Chart key:

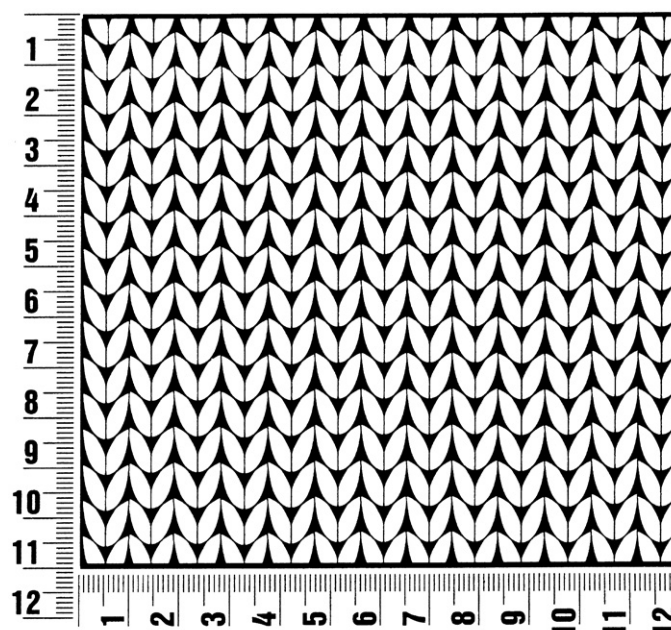
- = k1
- ⊙ = make a yo, then sl next st pwise
- ⊗ = ktog slipped st with its yo
- = ptog slipped st with its yo
- = Salmon
- = Plum
- = Grey



Gauge Swatch

Before you begin ...

...make a gauge swatch. Use the recommended needles, yarns and pattern stitch for your gauge swatch. It should measure approx. 12 cm x 12 cm. Cast-on and bind-off rows, as well as selvage stitches should not be included in the measurement. Pin your swatch and block it as you would the finished pieces of the garment. Count stitches and rows over 10 cm. If your gauge swatch is too small, switch to larger needles. If your gauge swatch is too big, switch to smaller needles.



Abbreviations

beg = begin(ning) · **ch** = chain · **cont** = continue · **dec** = decreas(e)(ing) · **inc** = increas(e)(ing) · **k** = knit · **kwise** = as if to knit
meas = measures · **M1L** = lift strand between sts from front to back and knit this strand through the back loop · **M1R** = lift strand between sts from the back and knit this strand through the front loop · **patt** = pattern · **pm** = place marker · **p** = purl
pwise = as if to purl · **rem** = remain(ing) · **rep** = repeat(s) · **rev St st** = reverse stockinette stitch · **rnd(s)** = round(s) · **RS** = right side · **sc** = single crochet · **skp** = slip 1 stitch as if to knit, knit 1 stitch, pass slipped stitch over knitted stitch · **sk2p** = slip 1 stitch as if to knit, knit 2 together, pass slipped stitch over knitted stitch · **s2kp** = slip 2 stitches as if to knit, k 1 stitch, pass slipped stitches over knitted stitch · **sl** = slip · **st(s)** = stitch(es) · **St st** = stockinette stitch · **tbl** = through the back loop · **tog** = together · **wyib** = with yarn in back of work · **wyif** = with yarn in front of work · **WS** = wrong side · **yo(s)** = yarn over(s)

Publisher's Info

Publisher: Lana Grossa GmbH, Gaimersheim, www.lanagrossa.com

Photographer: Wilfried Wulff, www.wilfriedwulff.com