



www.lanagrossa.com

SHRUG · LACE SETA MULBERRY

Design 02 – Tücher & Co. 04

SHRUG · LACE SETA MULBERRY

Design 02 – Tücher & Co. 04



Size 36/38 (40/42, 44)

Instructions are given for first size. Figures in parenthesis refer to larger sizes. When only one figure is given, it applies to all sizes.

Materials: 300 (350, 400) g of Lana Grossa **Lace Seta Mulberry** (35% Mulberry silk, 35% baby Alpaca, 30% superfine Merino wool; 175 m/50 g) in Salmon (**col 8**). Size 3.5 mm circular needle, 120 cm long; one set size 3.5 mm double-pointed needles [dpns].

St st: K on RS, p on WS.

Arrow lace: Multiple of 10. Work according to chart. Numbers at right edge of chart indicate rnds. On all rnds not shown on chart, knit all sts and yos. Work all rnds from right to left. Rep rnds 1 – 4.

Elastic bind-off: K2, * sl sts back to left needle, k2tog tbl, k1; rep from * until all sts are bound off. Break yarn and fasten off last st.

Gauges: On size 3.5 mm needles: 23 sts and 32 rows = 10 x 10 cm in St st; 21 sts and 32 rnds = 10 x 10 cm in arrow lace.

Shrug: With size 3.5 mm circular needle and using a provisional cast-on method of your choice, cast on 180 (190, 200) sts. Beg with a WS row work in St st for 60 (62, 64) cm, ending with a RS row. Undo provisional cast-on and place live sts on circular needle = 360 (380, 400) sts. Place beg of rnd marker and join for working in rnds. Work arrow lace according to chart for 15 cm, ending with a chart rnd 4. Bind off all sts [see elastic bind-off]. NOTE: While binding off, always k3tog the 5th, 6th and 7th st in each patt rep (worked as yo, sk2p, yo on chart rnd 3). Fold piece in half along fold line [see dashed line on schematics]. Sew seams as shown on schematic 3, leaving 18 (19, 20) cm open for armholes. **Sleeve cuffs:** With size 3.5 mm dpns, pick up and k 80 (80, 90) sts evenly around armhole edge. Arrange sts evenly on 4 needles = 20 (20 / 22-23-22-23) sts per needle, place beg of rnd marker and join for working in rnds. Work arrow lace according to chart for 12 cm, ending with a chart rnd 4. Bind off all sts [see elastic bind-off]. NOTE: While binding off, always k3tog the 5th, 6th and 7th st in each patt rep (worked as yo, sk2p, yo on chart rnd 3).

Finishing: Pin piece to measurements and block.

Chart

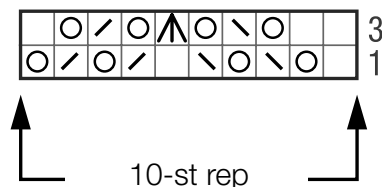
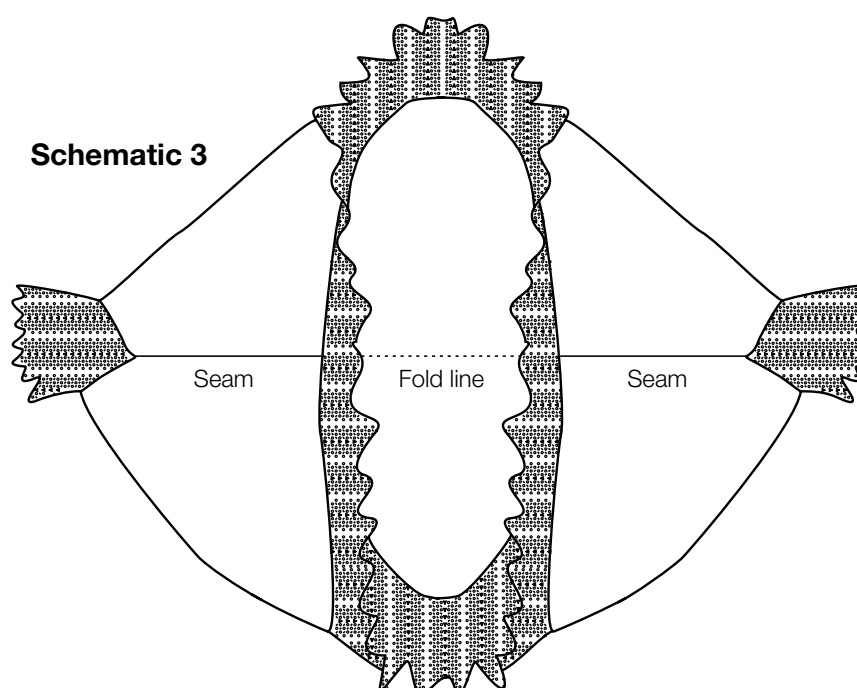
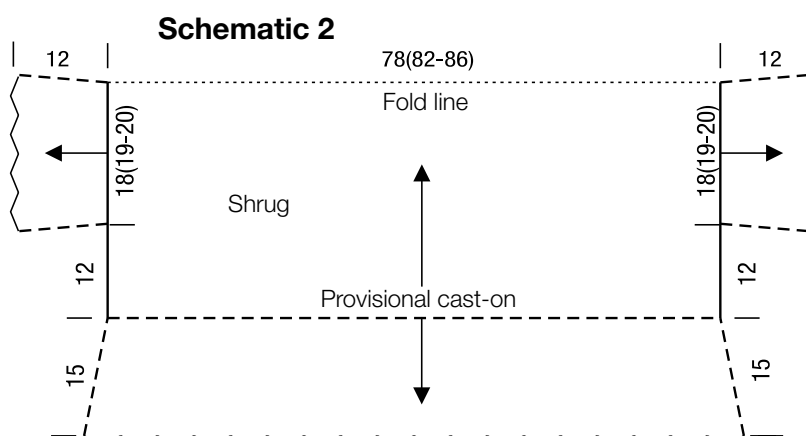
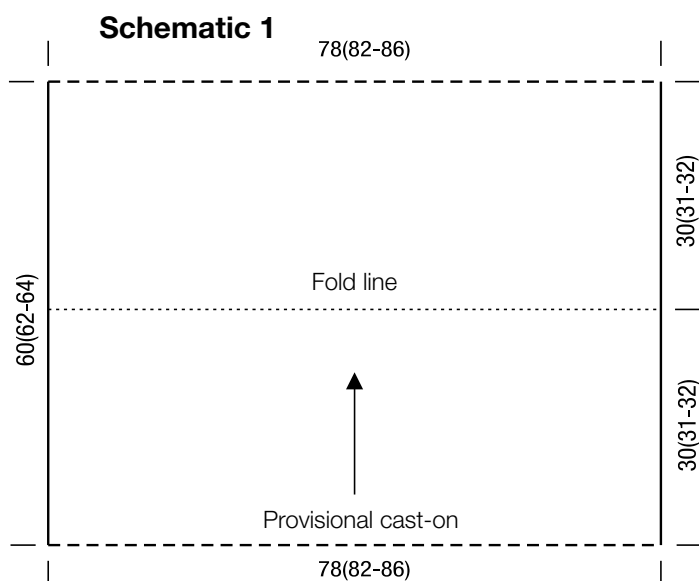


Chart key:

- = k1
- = yo
- = k2tog
- = skp: sl 1 kwise, k1, pass slipped st over knitted st
- = sk2p: sl 1 kwise, k2tog, pass slipped st over knitted st

SHRUG · LACE SETA MULBERRY

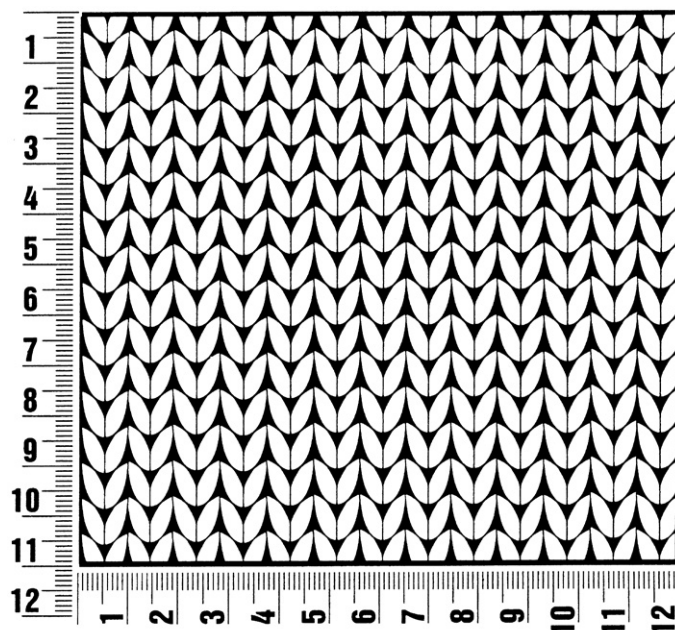
Design 02 – Tücher & Co. 04



Gauge Swatch

Before you begin ...

...make a gauge swatch. Use the recommended needles, yarns and pattern stitch for your gauge swatch. It should measure approx. 12 cm x 12 cm. Cast-on and bind-off rows, as well as selvage stitches should not be included in the measurement. Pin your swatch and block it as you would the finished pieces of the garment. Count stitches and rows over 10 cm. If your gauge swatch is too small, switch to larger needles. If your gauge swatch is too big, switch to smaller needles.



Abbreviations

beg = begin(ning) · **ch** = chain · **cont** = continue · **dec** = decreas(e)(ing) · **inc** = increas(e)(ing) · **k** = knit · **kwise** = as if to knit
meas = measures · **M1L** = lift strand between sts from front to back and knit this strand through the back loop · **M1R** = lift strand between sts from the back and knit this strand through the front loop · **patt** = pattern · **pm** = place marker · **p** = purl
pwise = as if to purl · **rem** = remain(ing) · **rep** = repeat(s) · **rev St st** = reverse stockinette stitch · **rnd(s)** = round(s) · **RS** = right side · **sc** = single crochet · **skp** = slip 1 stitch as if to knit, knit 1 stitch, pass slipped stitch over knitted stitch · **sk2p** = slip 1 stitch as if to knit, knit 2 together, pass slipped stitch over knitted stitch · **s2kp** = slip 2 stitches as if to knit, k 1 stitch, pass slipped stitches over knitted stitch · **sl** = slip · **st(s)** = stitch(es) · **St st** = stockinette stitch · **tbl** = through the back loop · **tog** = together · **wyib** = with yarn in back of work · **wyif** = with yarn in front of work · **WS** = wrong side · **yo(s)** = yarn over(s)

Publisher's Info

Publisher: Lana Grossa GmbH, Gaimersheim, www.lanagrossa.com

Photographer: Wilfried Wulff, www.wilfriedwulff.com