



www.lanagrossa.com

TOP · AMOROSO

Design 02 – Lookbook 10

TOP · AMOROSO

Design 02 – Lookbook 10



Size 36/38 (40/42, 44)

Instructions are given for first size. Figures in parenthesis refer to larger sizes. When only one figure is given, it applies to all sizes.

Materials: 200 (300, 300) g of Lana Grossa **Amoroso** (23% pure wool, 23% silk, 23% cotton, 23% acrylic, 8% polyamide; 400 m/100 g) in Light Grey/Jean/Violet Blue/Grey (**col 4**). Size 6 mm needles; size 6 mm circular needle, 40 cm long.

St st: K on RS, p on WS.

Rev St st: P on RS, k on WS.

Feather-and-fan patt: Multiple of 11. Work according to chart. Numbers at right edge of chart indicate RS rows, numbers at left edge of chart indicate WS rows. Work rows 1 – 8 once.

Two-stitch selvage: On RS row, sl 1 pwise wyib, k1, patt to last 2 sts, k1, sl 1 pwise wyib. On WS row, p1, sl 1 pwise wyif, patt to last 2 sts, sl 1 pwise wyif, p1.

Selvage sts: On RS row, ktbl first st, sl last st pwise wyib. On WS row, ptbl first st, sl last st pwise wyif.

Full-fashion increase: On RS row: M1R, 3 sts in from each edge.

Gauge: 18 sts and 18 rows = 10 x 10 cm in St st on size 6 mm needles.

Back: With size 6 mm needles cast on 94 (105, 111) sts. Knit 1 WS row. Next row (RS): Two-stitch selvage, 1 st in rev St st, 0 (0, 3) sts in St st, work feather-and-fan patt according to chart to last 3 (3, 6) sts = 8 (9, 9) patt reps, end with 0 (0, 3)

sts in St st, 1 st in rev St st, two-stitch selvage. Work in patt as set by last row for a total of 8 rows. Next row (RS): Two-stitch selvage, 1 st in rev St st, work in St st to last 3 sts, decreasing 0 (3, 1) sts, end with 1 st in rev St st, two-stitch selvage = 94 (102, 110) sts. Working first and last 3 sts as established, cont in St st for 19 rows, ending with a WS row. Shape sides: Working full-fashion inc, inc 1 st at each end of next RS row, then every 20th row 2 times = 100 (108, 116) sts. Work even until piece meas 32 (33, 34) cm from cast-on, ending with a WS row. Shape underarm: Working full-fashion inc, inc 1 st at each end of next 6 RS rows = 112 (120, 128) sts. Work 1 WS row. Next row (RS): Selvage st, work in St st to last st, selvage st. Work in patt as set by last row until piece meas 56 (57, 58) cm from cast-on, ending with a WS row. Shape shoulders/overarms: At each shoulder edge bind off 4 (4, 5) sts 1 time, then 4 sts 7 times (then 4 sts 3 times, 5 sts 4 times / then 5 sts 7 times). Bind off rem 48 sts.

Front: Work same as back to shoulder/overarm shaping. Work shoulder/overarm shaping same as for back. At same time, when piece meas 2 cm from beg of shoulder/overarm shaping, shape neck as foll: Next row (RS): Bind off center 38 sts. Working each side separately, bind off 3 sts at each neck edge 1 time, 2 sts 1 time. No sts rem.

Finishing: Pin pieces to measurements and block. Sew shoulder/overarm seams. **Neck trim:** With size 6 mm circular needle, pick up and k 108 sts evenly around neck edge. Rnd 1: Bind off all sts kwise. **Sleeve bands:** With size 6 mm needles cast on 79 sts. Knit 1 WS row. Next row (RS): Selvage st, work feather-and-fan patt according to chart to last st = 7 patt reps, end selvage st. Work in patt as set by last row for a total of 8 rows. Knit 1 RS row. Next row (WS): Bind off all sts pwise. Sew bound-off edge of band to sleeve edge. Sew side and sleeve seams, working 1 st in from edge.

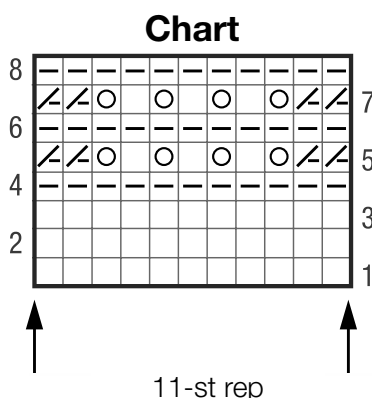
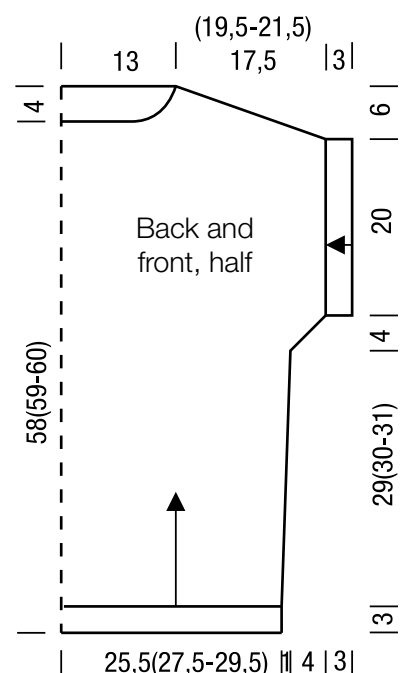


Chart key:

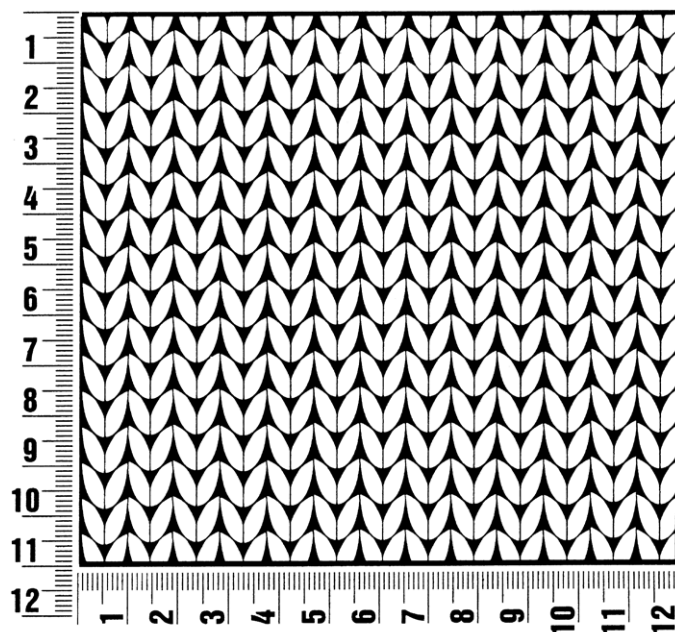
- = k1
- = p1
- = yo
- / = p2tog



Gauge Swatch

Before you begin ...

...make a gauge swatch. Use the recommended needles, yarns and pattern stitch for your gauge swatch. It should measure approx. 12 cm x 12 cm. Cast-on and bind-off rows, as well as selvage stitches should not be included in the measurement. Pin your swatch and block it as you would the finished pieces of the garment. Count stitches and rows over 10 cm. If your gauge swatch is too small, switch to larger needles. If your gauge swatch is too big, switch to smaller needles.



Abbreviations

beg = begin(ning) · **ch** = chain · **cont** = continue · **dec** = decreas(e)(ing) · **inc** = increas(e)(ing) · **k** = knit · **kwise** = as if to knit
meas = measures · **M1L** = lift strand between sts from front to back and knit this strand through the back loop · **M1R** = lift strand between sts from the back and knit this strand through the front loop · **patt** = pattern · **pm** = place marker · **p** = purl
pwise = as if to purl · **rem** = remain(ing) · **rep** = repeat(s) · **rev St st** = reverse stockinette stitch · **rnd(s)** = round(s) · **RS** = right side · **sc** = single crochet · **skp** = slip 1 stitch as if to knit, knit 1 stitch, pass slipped stitch over knitted stitch · **sk2p** = slip 1 stitch as if to knit, knit 2 together, pass slipped stitch over knitted stitch · **s2kp** = slip 2 stitches as if to knit, k 1 stitch, pass slipped stitches over knitted stitch · **sl** = slip · **st(s)** = stitch(es) · **St st** = stockinette stitch · **tbl** = through the back loop · **tog** = together · **wyib** = with yarn in back of work · **wyif** = with yarn in front of work · **WS** = wrong side · **yo(s)** = yarn over(s)

Publisher's Info

Publisher: Lana Grossa GmbH, Gaimersheim, www.lanagrossa.com

Photographer: Wilfried Wulff, www.wilfriedwulff.com