



www.lanagrossa.com

JACKET · ALESSIA

Design 08 – Lookbook 10

JACKET · ALESSIA

Design 08 – Lookbook 10



Size 36/38 (40/42, 44)

Instructions are given for first size. Figures in parenthesis refer to larger sizes. When only one figure is given, it applies to all sizes.

Materials: 300 (350, 400) g of Lana Grossa **Alessia** (76% cotton, 20% recycled polyester, 4% polyester; 135 m/50 g) in Silver/Grey Green/Ecru (**col 6**) or Black/Copper/Silver/Hemp (**col 103**). Size 4.5 mm needles; size 4 mm circular needle, 40 cm long; seven 18 mm mother-of-pearl buttons [by UNION KNOFF, item 37604, col 12].

St st: K on RS, p on WS.

Rev St st: P on RS, k on WS.

Lace patt: Multiple of 14 + 1. Work according to chart. Numbers at right edge of chart indicate RS rows, numbers at left edge of chart indicate WS rows. Rep rows 1 – 10.

Two-stitch selvage: On RS row, sl 1 pwise wyib, k1, patt to last 2 sts, k1, sl 1 pwise wyib. On WS row, p1, sl 1 pwise wyif, patt to last 2 sts, sl 1 pwise wyif, p1.

Twisted garter selvage: On RS row, ktbl first st, sl last st pwise wyib. On WS row, ptbl first st, sl last st pwise wyif.

Gauge: 20 sts and 29 rows = 10 x 10 cm in lace patt on size 4.5 mm needles.

Back: With size 4.5 mm needles cast on 105 (111, 119) sts. Purl 1 WS row. Next row (RS): Two-stitch selvage, 1 st in rev St st, 0 (3, 0) sts in St st, 99 (99, 113) sts in lace patt according to chart = work patt rep 7 (7, 8) times, work to end of chart; 0 (3, 0) sts in St st, 1 st in rev St st, two-stitch selvage. Work in patt as set by last row until piece meas 20.5 cm from cast-on, ending with a WS row. Shape underarm: Next RS (inc) row: Twisted garter selvage, M1, work next 2 (5, 2) sts into lace patt, work lace patt as established over next 99 (99, 113) sts, work next 2 (5, 2) sts into lace patt, M1, twisted garter selvage. Maintaining selvage sts, cont in lace patt, rep RS inc row 11 times = 129 (135, 143) sts. Work increased sts into lace patt. Work even for 18 (19, 20) cm, ending with a WS

row. Shape shoulders/overarms and neck: At each shoulder edge bind off 6 sts 8 times (6 sts 5 times, 7 sts 3 times / 6 sts 1 time, 7 sts 7 times). At same time, when piece meas 3.5 cm from beg of shoulder/overarm shaping, shape neck as foll: Next row (RS): Bind off center 29 sts. Working each side separately, bind off 2 sts at each neck edge 1 time. No sts rem.

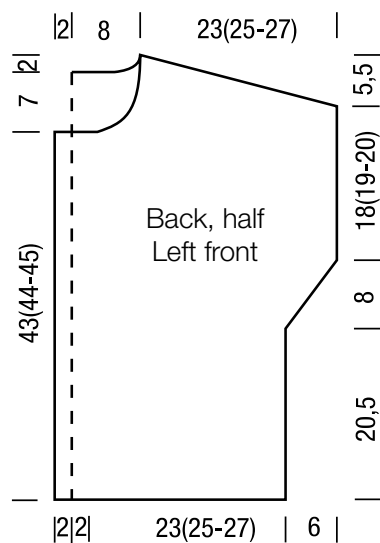
Left front: With size 4.5 mm needles cast on 57 (60, 64) sts. Purl 1 WS row. Next row (RS): Two-stitch selvage, 1 st in rev St st, 43 sts in lace patt according to chart = work patt rep 3 times, work to end of chart; 9 sts in rib patt, two-stitch selvage (two-stitch selvage, 1 st in rev St st, 3 sts in St st, 43 sts in lace patt according to chart = work patt rep 3 times, work to end of chart; 9 sts in rib patt, two-stitch selvage / two-stitch selvage, 1 st in rev St st, 50 sts in lace patt according to chart = work patt rep 3 times, then work first 8 sts of patt rep once more; 9 sts in rib patt, two-stitch selvage). Work in patt as set by last row until piece meas 20.5 cm from cast-on, ending with a WS row. Work underarm shaping at right edge same as for back = 69 (72, 76) sts. Work even until piece meas 43 (44, 45) cm from cast-on, ending with a RS row. Shape neck: At beg of WS rows, bind off 10 sts 1 time, 3 sts 1 time, 2 sts 2 times, 1 st 4 times and when same length as back to shoulders, shape shoulder at right edge same as for back. No sts rem.

Right front: Work same as left front, reversing all shaping and patt placement and working 7 buttonholes at beg of RS rows as foll: Two-stitch selvage, 4 sts in rib patt as established, bind off 2 sts, work to end. On foll WS row, cast on 2 sts over bound-off sts. Work first buttonhole when piece meas 5 (6, 7) cm from cast-on, rem 6 buttonholes spaced 6 cm apart.

Finishing: Pin pieces to measurements and block. Sew shoulder seams. **Neckband:** With size 4 mm circular needle, beg and end 11 sts in from front edge, pick up and k 119 sts evenly along right front, back and left front neck edge. Next row (WS): Two-stitch selvage, * k1, p1tbl; rep from * to last 3 sts, k1, two-stitch selvage. Maintaining selvage sts, work in rib patt as set by last row until band meas 3 cm from pick-up row. Bind off all sts in rib. Sew side and sleeve seams. Sew on buttons.

JACKET · ALESSIA

Design 08 – Lookbook 10



Chart

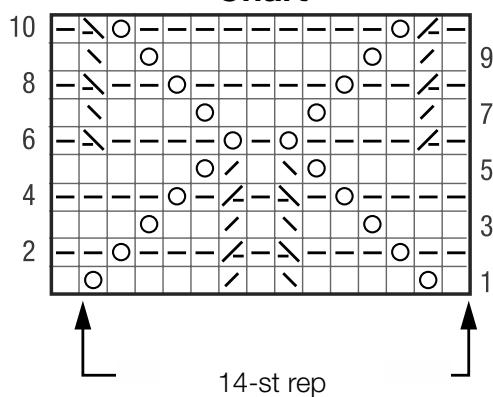


Chart key:

- = k1
- ▬ = p1
- = yo
- ↘ = k2tog
- ↙ = p2tog
- ↘○ = skp: sl 1 kwise, k1, pass slipped st over knitted st
- ↙○ = p2tog tbl

Gauge Swatch

Before you begin ...

...make a gauge swatch. Use the recommended needles, yarns and pattern stitch for your gauge swatch. It should measure approx. 12 cm x 12 cm. Cast-on and bind-off rows, as well as selvage stitches should not be included in the measurement. Pin your swatch and block it as you would the finished pieces of the garment. Count stitches and rows over 10 cm. If your gauge swatch is too small, switch to larger needles. If your gauge swatch is too big, switch to smaller needles.



Abbreviations

beg = begin(ning) · **ch** = chain · **cont** = continue · **dec** = decreas(e)(ing) · **inc** = increas(e)(ing) · **k** = knit · **kwise** = as if to knit
meas = measures · **M1L** = lift strand between sts from front to back and knit this strand through the back loop · **M1R** = lift strand between sts from the back and knit this strand through the front loop · **patt** = pattern · **pm** = place marker · **p** = purl
pwise = as if to purl · **rem** = remain(ing) · **rep** = repeat(s) · **rev St st** = reverse stockinette stitch · **rnd(s)** = round(s) · **RS** = right side · **sc** = single crochet · **skp** = slip 1 stitch as if to knit, knit 1 stitch, pass slipped stitch over knitted stitch · **sk2p** = slip 1 stitch as if to knit, knit 2 together, pass slipped stitch over knitted stitch · **s2kp** = slip 2 stitches as if to knit, k 1 stitch, pass slipped stitches over knitted stitch · **sl** = slip · **st(s)** = stitch(es) · **St st** = stockinette stitch · **tbl** = through the back loop · **tog** = together · **wyib** = with yarn in back of work · **wyif** = with yarn in front of work · **WS** = wrong side · **yo(s)** = yarn over(s)

Publisher's Info

Publisher: Lana Grossa GmbH, Gaimersheim, www.lanagrossa.com

Photographer: Wilfried Wulff, www.wilfriedwulff.com