



www.lanagrossa.com

COAT · FOURSEASON

Design 03 – Linea Pura 14

COAT · FOURSEASON

Design 03 – Linea Pura 14



Size One size

Materials: 750 g of Lana Grossa **Fourseason** (45% superfine organic Merino wool, 40% organic cotton, 15% recycled cashmere; 105 m/50 g) in Off White (**col 12**). Size 4 and 4.5 mm needles.

Slip stitch selvage: On every row: K first st, sl last st pwise wyif.

Two-stitch selvage: On RS row, k1, sl 1 pwise wyib, work to last 2 sts, sl 1 pwise wyib, k1. On WS row, sl 1 pwise wyif, p1, work to last 2 sts, p1, sl 1 pwise wyif.

Charts A/B and C/D: Numbers at right edge of charts indicate RS rows; on WS rows, work sts as they appear or according to chart key. Work to patt rep, work 24 sts between arrows for patt rep, work to end of chart.

Rev St st: P on RS, k on WS.

Gauge: 19 sts and 27 rows = 10 x 10 cm in chart patt B and/or D on size 4.5 mm needles.

Back: With size 4 mm needles cast on 117 sts. Work according to chart A for 38 rows = 14 cm: Work rows 1 – 4 once, then work rows 3 and 4 seventeen more times. Change to size 4.5 mm needles. Work according to chart B for 144 rows = 53 cm, repeating rows 1 – 16 throughout. Shape armholes: Bind off 9 sts at beg of next 2 rows = 99 sts. Next row (RS): Two-stitch selvage, 1 st in rev St st, work next row of chart B to last 3 sts, 1 st in rev St st, two-stitch selvage. Work in patt as set by last row for a total of 46 rows and armhole meas 17.5 cm. Bind off all sts. Mark center 33 sts for neck.

Left front: With size 4 mm needles cast on 70 sts. Next row (RS): Work row 1 of chart C to last 2 sts, two-stitch selvage. Maintaining two-stitch selvage at front edge, work rows 2 – 4 of chart C, then work rows 3 and 4 seventeen more times = 38 rows and piece meas 14 cm from cast-on. Change to size 4.5 mm needles. Maintaining two-stitch selvage at front edge,

work according to chart D for 144 rows = 53 cm, repeating rows 1 – 16 throughout. Shape armhole: Bind off 9 sts at beg of next RS row = 61 sts. Next row (WS): Two-stitch selvage, work next row of chart D to last 3 sts, 1 st in rev St st, two-stitch selvage. Work in patt as set by last row for a total of 47 rows and armhole meas 17.5 cm. Next row (RS): Bind off 33 sts, work to end of row = 28 sts rem for collar. Maintaining two-stitch selvage at front edge and working a slip st selvage at shoulder edge, cont in patt until collar meas 9 cm, ending with a WS row. Bind off all sts.

Right front: Work same as left front, reversing all shaping and patt placement.

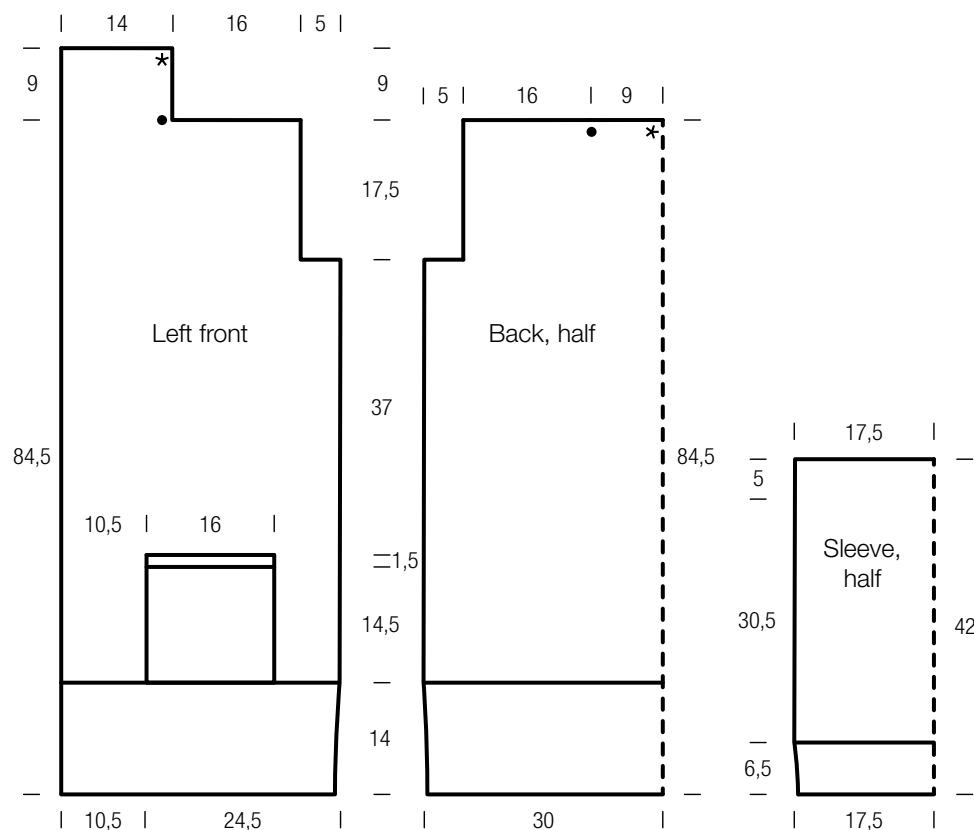
Sleeves: With size 4 mm needles cast on 69 sts. Work according to chart A for 18 rows = 6.5 cm: Work rows 1 – 4 once, then work rows 3 and 4 seven more times. Change to size 4.5 mm needles. Work according to chart B for 96 rows = 35.5 cm. Loosely bind off all sts.

Pocket: Make 2. With size 4.5 mm needles cast on 33 sts. Next row (RS): Two-stitch selvage, 1 st in rev St st, work row 1 of chart D over next 27 sts = work 18 sts before 2nd arrow, then work 9 sts after 2nd arrow; 1 st in rev St st, two-stitch selvage. Work in patt as set by last row for a total of 40 rows and piece meas 14.5 cm from cast-on. Change to size 4 mm needles. Next row (RS): Two-stitch selvage, 1 st in rev St st, work row 1 of chart C over next 27 sts = work 18 sts before 2nd arrow, then work 9 sts after 2nd arrow; 1 st in rev St st, two-stitch selvage. Work in patt as set by last row for a total of 5 rows = 1.5 cm. Bind off all sts in patt.

Finishing: Pin pieces to measurements and block. Referring to schematic for placement, sew pockets to fronts. Sew shoulder seams. Sew bound-off edges of collar tog: With mattress st and from RS, sew bottom half; with mattress st and from WS, sew top half for the turnback of the collar to the right side. Sew collar to back neck edge. Set sleeves into armholes, sewing top 5 cm to bottom edges of armhole shaping. Sew side and sleeve seams. Sew all seams 1 st in from edge.

COAT · FOURSEASON

Design 03 – Linea Pura 14



Charts A/B and C/D

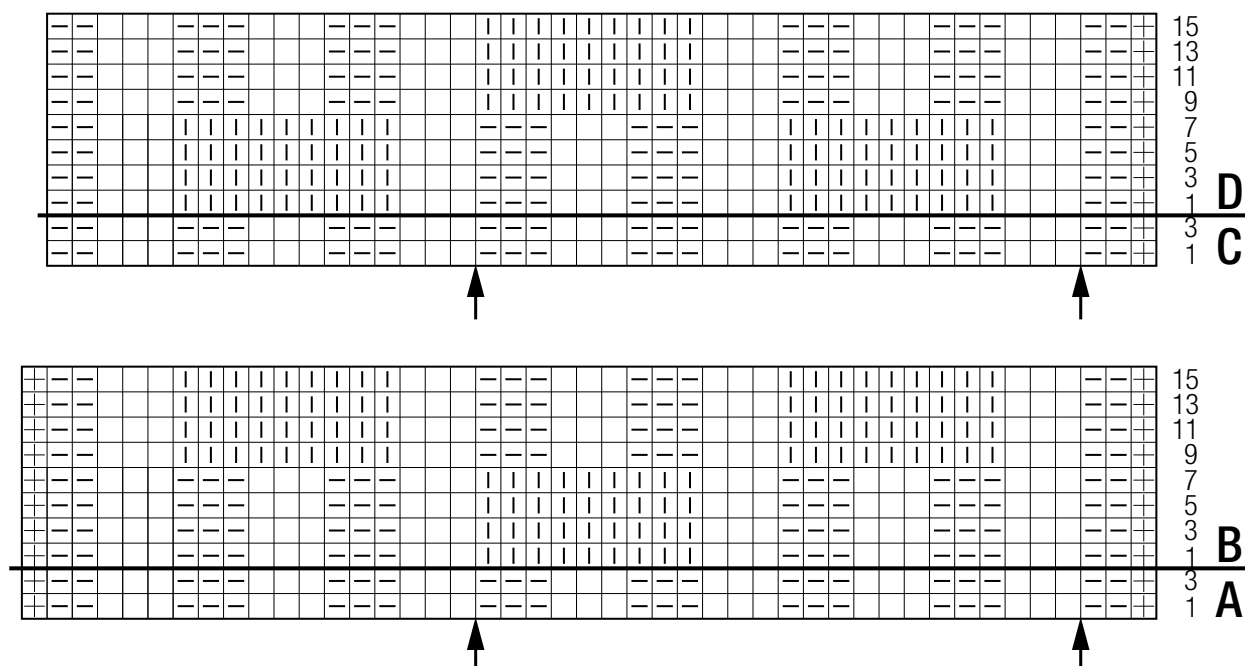


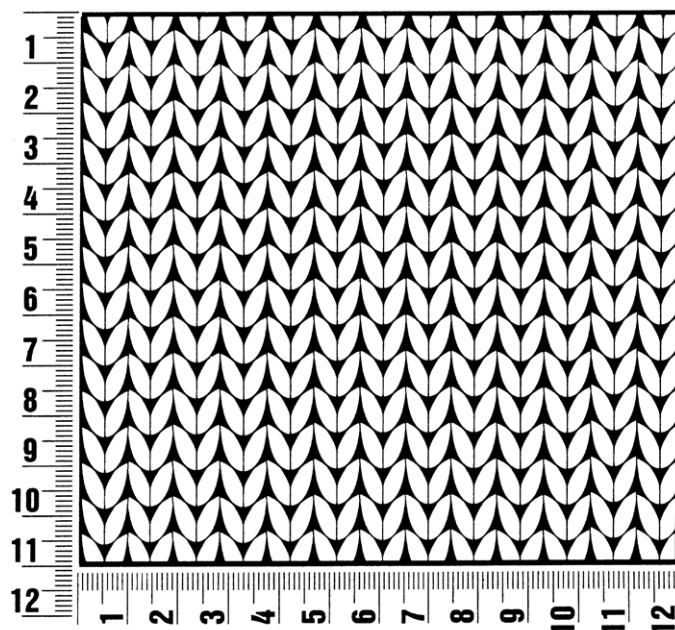
Chart key:

- = slip st selvage
- = k1
- = p1
- = k1 on RS and WS (garter st)

Gauge Swatch

Before you begin ...

...make a gauge swatch. Use the recommended needles, yarns and pattern stitch for your gauge swatch. It should measure approx. 12 cm x 12 cm. Cast-on and bind-off rows, as well as selvage stitches should not be included in the measurement. Pin your swatch and block it as you would the finished pieces of the garment. Count stitches and rows over 10 cm. If your gauge swatch is too small, switch to larger needles. If your gauge swatch is too big, switch to smaller needles.



Abbreviations

beg = begin(ning) · **ch** = chain · **cont** = continue · **dec** = decreas(e)(ing) · **inc** = increas(e)(ing) · **k** = knit · **kwise** = as if to knit
meas = measures · **M1L** = lift strand between sts from front to back and knit this strand through the back loop · **M1R** = lift strand between sts from the back and knit this strand through the front loop · **patt** = pattern · **pm** = place marker · **p** = purl
pwise = as if to purl · **rem** = remain(ing) · **rep** = repeat(s) · **rev St st** = reverse stockinette stitch · **rnd(s)** = round(s) · **RS** = right side · **sc** = single crochet · **skp** = slip 1 stitch as if to knit, knit 1 stitch, pass slipped stitch over knitted stitch · **sk2p** = slip 1 stitch as if to knit, knit 2 together, pass slipped stitch over knitted stitch · **s2kp** = slip 2 stitches as if to knit, k 1 stitch, pass slipped stitches over knitted stitch · **sl** = slip · **st(s)** = stitch(es) · **St st** = stockinette stitch · **tbl** = through the back loop · **tog** = together · **wyib** = with yarn in back of work · **wyif** = with yarn in front of work · **WS** = wrong side · **yo(s)** = yarn over(s)

Publisher's Info

Publisher: Lana Grossa GmbH, Gaimersheim, www.lanagrossa.com

Photographer: Cathleen Wolf, www.cathleenwolf.com