



[www.lanagrossa.com](http://www.lanagrossa.com)

# **PULLOVER · FOURSEASON**

Design 04 – Linea Pura 14



# PULLOVER · FOURSEASON

## Design 04 – Linea Pura 14



**Size** 36 – 40 (42 – 46)

Instructions are given for smaller size. Figure in parenthesis refers to larger size. When only one figure is given, it applies to both sizes.

**Materials:** **350 (400) g** of Lana Grossa **Fourseason** (45% superfine organic Merino wool, 40% organic cotton, 15% recycled cashmere; 105 m/50 g) in Yellow (**col 8**). Size 5 mm needles; cable needle [cn].

**Two-stitch selvage:** On RS row, k1, sl 1 pwise wyib, work to last 2 sts, sl 1 pwise wyib, k1. On WS row, sl 1 pwise wyif, p1, work to last 2 sts, p1, sl 1 pwise wyif.

**Rib patt:** K1, p1.

**St st:** K on RS, p on WS.

**Rev St st:** P on RS, k on WS.

**Eyelet patt:** Work according to chart. Numbers at left edge of chart indicate WS rows, numbers at right edge of chart indicate RS rows. Chart begins with a WS row. Two-stitch selvage is shown in grey on chart. Work to patt rep, work 8 sts between arrows for patt rep, work to end of chart. Work rows 1 – 33 once, then work rows 2 – 17 once more for a total of 49 rows.

**Full-fashion decrease (double decrease):** At beg of RS row, k5, skp (sk2p); at end of RS row, work to last 7 (8) sts, k2tog (k3tog), k5 = 1 (2) st(s) decreased.

**Full-fashion increase:** On RS row: M1R, 3 sts in from edge.

**Gauge:** 17.5 sts and 25 rows = 10 x 10 cm in St st on size 5 mm needles.

**Back:** With size 5 mm needles cast on 121 sts. Beg with a WS row, work according to chart for 49 rows. Next row (RS): Two-stitch selvage, 1 st in rev St st, skp, work in St st to last

3 sts, 1 st in rev St st, two-stitch selvage = 120 sts. Next row (WS): Two-stitch selvage, 1 st in rev St st, 114 sts in St st, 1 st in rev St st, two-stitch selvage. Work in patt as set by last row for a total of 29 (35) rows = 12 (14) cm. Place marker in first and last st on last WS row to indicate beg of armholes. Work even for 44 (46) rows and piece meas 17 (18) cm from armhole markers. Shape V-neck: Next row (RS): Patt over 58 sts, sl next 2 sts to cn and hold in front of work, k2, then k2 from cn, patt to end of row. Next row (WS): Divide work at center = 60 sts each side. Working each side separately and working full-fashion dec, dec 1 st at each neck edge 1 time, then dec 2 sts at each neck edge 9 times. At same time, when 46 (48) rows = 18 (19) cm have been worked from armhole markers, shape shoulders as foll: At each shoulder edge, bind off 4 sts 1 time, 3 sts 9 times, 10 sts 1 time. No sts rem.

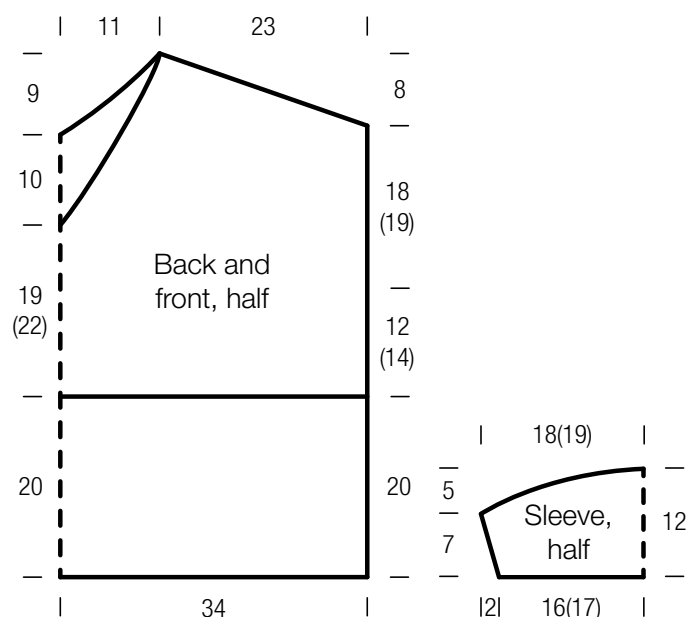
**Front:** Work same as back until 18 (20) rows = 7 (8) cm have been worked from armhole markers. Shape V-neck: Next row (RS): Patt over 58 sts, sl next 2 sts to cn and hold in front of work, k2, then k2 from cn, patt to end of row. Next row (WS): Divide work at center = 60 sts each side. Working each side separately and working full-fashion dec, dec 1 st at each neck edge every RS row 19 times and when same length as back to shoulders, shape shoulders same as for back. No sts rem.

**Sleeves:** With size 5 mm needles cast on 58 (62) sts. Next row (WS): Work in rib patt. Next row (RS): Two-stitch selvage, 1 st in rev St st, work in St st to last 3 sts, 1 st in rev St st, two-stitch selvage. Work in patt as set by last row and shape sleeve as foll: Working full-fashion inc, inc 1 st at each end of 4th row from cast-on, then every foll 4th row 2 times, then every alt row 1 time = 66 (70) sts. Work even until a total of 17 rows = 7 cm has been worked from cast-on. Shape sleeve cap: Bind off 4 sts at beg of next 2 rows, 3 sts at beg of next 10 rows. Bind off rem 28 (32) sts.

**Finishing:** Pin pieces to measurements and block. Sew shoulder seams. Sew on sleeves between markers. Sew side and sleeve seams. Sew all seams 1 st in from edge.

# PULLOVER · FOURSEASON

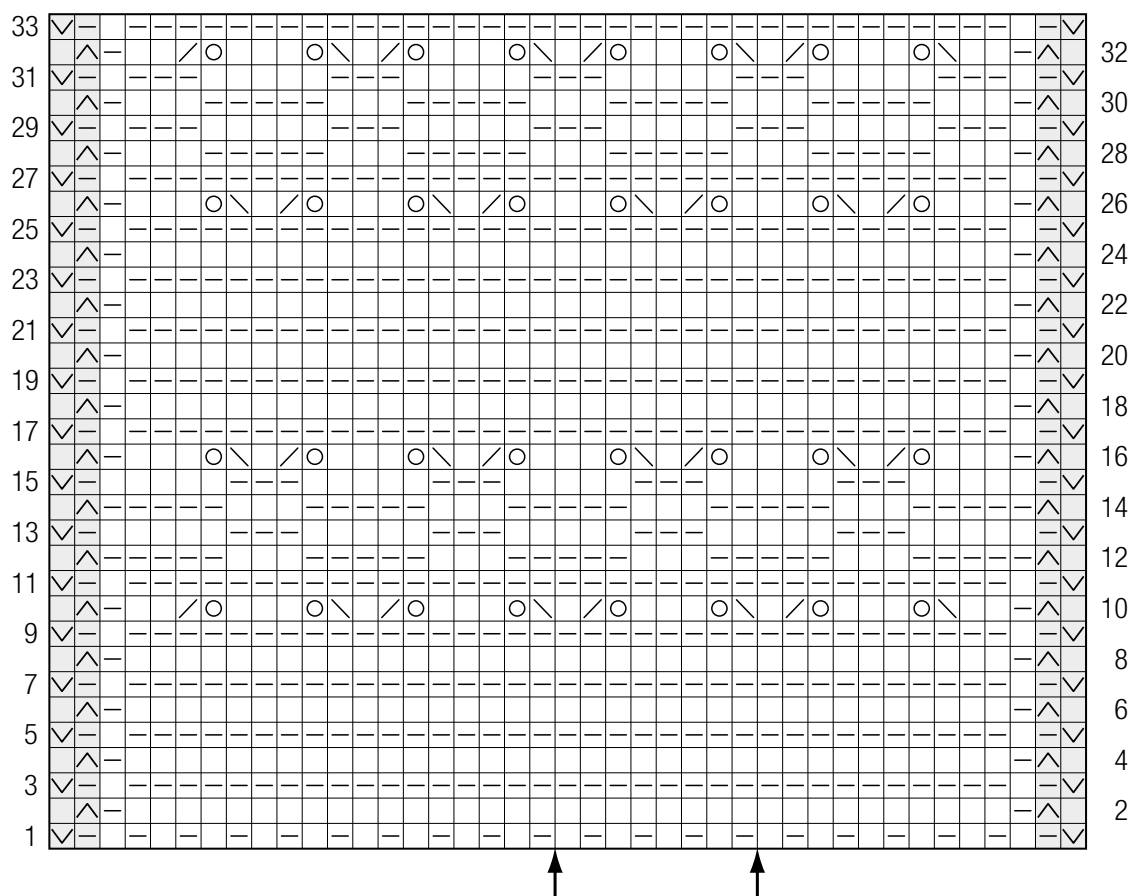
## Design 04 – Linea Pura 14



### Chart key:

- ☐ = k1
- ☐ = p1
- ☐ = yo
- ☐ = k2tog
- ☐ = skp: sl 1 kwise, k1, pass slipped st over knitted st
- ☒ = sl 1 pwise wyif
- ☒ = sl 1 pwise wyib

### Chart



## Gauge Swatch

### Before you begin ...

...make a gauge swatch. Use the recommended needles, yarns and pattern stitch for your gauge swatch. It should measure approx. 12 cm x 12 cm. Cast-on and bind-off rows, as well as selvage stitches should not be included in the measurement. Pin your swatch and block it as you would the finished pieces of the garment. Count stitches and rows over 10 cm. If your gauge swatch is too small, switch to larger needles. If your gauge swatch is too big, switch to smaller needles.



## Abbreviations

**beg** = begin(ning) · **ch** = chain · **cont** = continue · **dec** = decreas(e)(ing) · **inc** = increas(e)(ing) · **k** = knit · **kwise** = as if to knit  
**meas** = measures · **M1L** = lift strand between sts from front to back and knit this strand through the back loop · **M1R** = lift strand between sts from the back and knit this strand through the front loop · **patt** = pattern · **pm** = place marker · **p** = purl  
**pwise** = as if to purl · **rem** = remain(ing) · **rep** = repeat(s) · **rev St st** = reverse stockinette stitch · **rnd(s)** = round(s) · **RS** = right side · **sc** = single crochet · **skp** = slip 1 stitch as if to knit, knit 1 stitch, pass slipped stitch over knitted stitch · **sk2p** = slip 1 stitch as if to knit, knit 2 together, pass slipped stitch over knitted stitch · **s2kp** = slip 2 stitches as if to knit, k 1 stitch, pass slipped stitches over knitted stitch · **sl** = slip · **st(s)** = stitch(es) · **St st** = stockinette stitch · **tbl** = through the back loop · **tog** = together · **wyib** = with yarn in back of work · **wyif** = with yarn in front of work · **WS** = wrong side · **yo(s)** = yarn over(s)

### Publisher's Info

**Publisher:** Lana Grossa GmbH, Gaimersheim, [www.lanagrossa.com](http://www.lanagrossa.com)

**Photographer:** Cathleen Wolf, [www.cathleenwolf.com](http://www.cathleenwolf.com)