



www.lanagrossa.com

CARDIGAN · CERTO PRINT

Design 12 – Linea Pura 14

CARDIGAN · CERTO PRINT

Design 12 – Linea Pura 14



Size 36/38 (40/42)

Instructions are given for smaller size. Figure in parenthesis refers to larger size. When only one figure is given, it applies to both sizes.

Materials: 500 (550) g of Lana Grossa **Certo Print** (100% cotton; 115 m/50 g) in Beige/Salmon/Blackberry/Aubergine (**col 108**). Size 7 and 8 mm needles; one 28 mm mother-of-pearl button.

Chart patt A and B: Numbers at left edge of charts indicate WS rows, numbers at right edge of charts indicate RS rows. Charts begin with a WS row. Work to patt rep, work 2 sts between arrows for patt rep, work to end of chart. Sts shown in grey are worked as two-stitch selvage. Work rows 1 – 4 once, then rep rows 3 and 4. **Note:** 1 stitch and 1 yo are treated as 1 stitch.

Full-fashion decrease: At beg of RS row, patt over 9 sts, k2tog tbl; at end of RS row, work to last 11 sts, k2tog, patt to end.

Full-fashion increase: On RS row: M1R or M1L as needed for patt, 3 sts in from each edge.

Gauge: 18 sts and 23 rows = 10 x 10 cm in chart patt on size 8 mm needles.

Back: With size 7 mm needles cast on 95 (103) sts. Beg with a WS row, work chart A for 2 rows. Change to size 8 mm needles. Cont to foll chart A until a total of 63 rows has been worked and piece meas 27 cm from cast-on. Place marker in first and last st on last WS row to indicate beg of armholes. Cont in patt for 44 (46) rows and piece meas 19 (20) cm from armhole markers. Shape shoulders and neck: At each shoulder edge bind off 3 (5) sts 2 times, 4 sts 5 times. At same time, when piece meas 4 cm from beg of shoulder shaping, shape neck as foll: Next row (RS): Bind off center 37 sts. Working each side separately, bind off 3 sts at each neck edge 1 time. No sts rem.

Left front: With size 7 mm needles cast on 53 (57) sts. Beg with a WS row, work chart B for 2 rows. Change to size 8 mm

needles. Cont to foll chart B until a total of 39 (41) rows has been worked and piece meas 17 (18) cm from cast-on. Shape neck: Working full-fashion dec, dec 1 st at end of next RS row, then every alt RS row 17 times. At same time, when same length as back to armhole, place armhole marker at right edge and when same length as back to shoulder, shape shoulder at right edge same as for back = 9 sts rem for front band. Working a garter selvage at right edge (k1 every row), cont in patt for 12 cm. Bind off all sts in patt.

Right front: Work same as left front, reversing all shaping and patt placement and working one buttonhole on first row of neck shaping as foll: Patt over 4 sts, yo, k2tog, patt to end. On foll WS row, work yo tbl.

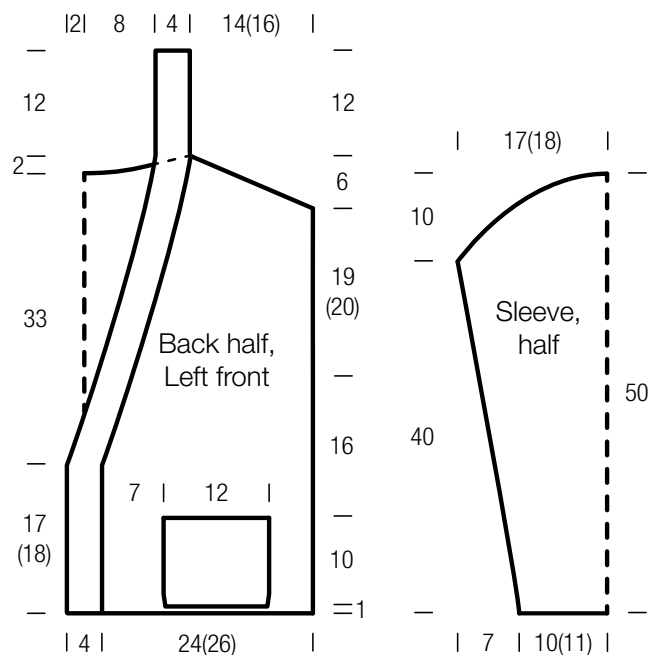
Sleeves: With size 7 mm needles cast on 39 (41) sts. Beg with a WS row, work chart A for 2 rows. Change to size 8 mm needles. Cont to foll chart A and shape sleeve as foll: Working full-fashion inc, inc 1 st at each end of 6th row from cast-on, then [every 8th row 1 time, then every 6th row 1 time] 6 times = 65 (67) sts. Work increased sts into patt. Cont in patt until a total of 93 rows has been worked and piece meas 40 cm from cast-on. Shape sleeve cap: Bind off 2 sts at beg of next 24 rows. Bind off rem 17 (19) sts.

Pockets: Make 2. With size 7 mm needles cast on 25 sts. Beg with a WS row, work chart A for 2 rows. Change to size 8 mm needles. Cont to foll chart A until a total of 24 rows has been worked and piece meas 10 cm from cast-on. Next (bind-off) row: * K1tbl, k2tog tbl, sl sts back to left needle; rep from * to last 4 sts. K2tog 2 times = 2 sts. Pass 2nd st over last st. Cut yarn and fasten off last st.

Finishing: Pin pieces to measurements and block. Referring to schematic for placement, sew pockets to fronts. Sew shoulder seams. Sew bound-off edges of neckbands tog, then sew neckband to back neck edge. Sew on sleeves between markers. Sew side and sleeve seams. Sew on buttons. Note: Sew all seams 1 st in from edge.

CARDIGAN · CERTO PRINT

Design 12 – Linea Pura 14



Chart

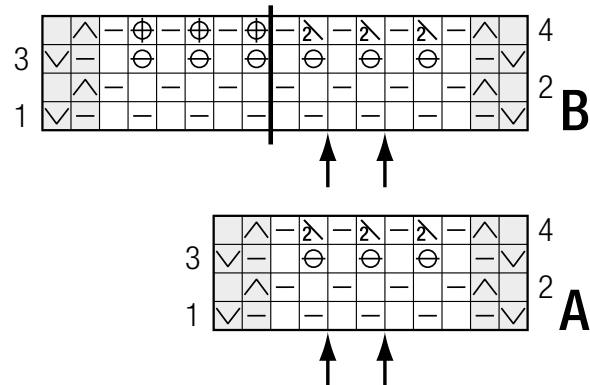


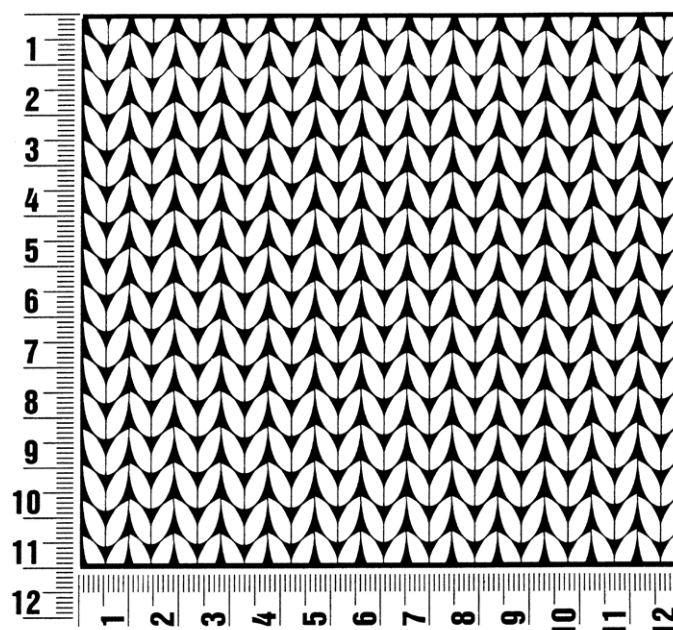
Chart key:

- = k1
- ▢ = p1
- ⊖ = make a yo, then sl next st pwise
- ⊕ = ktog slipped st with its yo
- ⊗ = ktog tbl slipped st with its yo
- ⊞ = sl 1 pwise wyif
- ⊠ = sl 1 pwise wyib

Gauge Swatch

Before you begin ...

...make a gauge swatch. Use the recommended needles, yarns and pattern stitch for your gauge swatch. It should measure approx. 12 cm x 12 cm. Cast-on and bind-off rows, as well as selvage stitches should not be included in the measurement. Pin your swatch and block it as you would the finished pieces of the garment. Count stitches and rows over 10 cm. If your gauge swatch is too small, switch to larger needles. If your gauge swatch is too big, switch to smaller needles.



Abbreviations

beg = begin(ning) · **ch** = chain · **cont** = continue · **dec** = decreas(e)(ing) · **inc** = increas(e)(ing) · **k** = knit · **kwise** = as if to knit
meas = measures · **M1L** = lift strand between sts from front to back and knit this strand through the back loop · **M1R** = lift strand between sts from the back and knit this strand through the front loop · **patt** = pattern · **pm** = place marker · **p** = purl
pwise = as if to purl · **rem** = remain(ing) · **rep** = repeat(s) · **rev St st** = reverse stockinette stitch · **rnd(s)** = round(s) · **RS** = right side · **sc** = single crochet · **skp** = slip 1 stitch as if to knit, knit 1 stitch, pass slipped stitch over knitted stitch · **sk2p** = slip 1 stitch as if to knit, knit 2 together, pass slipped stitch over knitted stitch · **s2kp** = slip 2 stitches as if to knit, k 1 stitch, pass slipped stitches over knitted stitch · **sl** = slip · **st(s)** = stitch(es) · **St st** = stockinette stitch · **tbl** = through the back loop · **tog** = together · **wyib** = with yarn in back of work · **wyif** = with yarn in front of work · **WS** = wrong side · **yo(s)** = yarn over(s)

Publisher's Info

Publisher: Lana Grossa GmbH, Gaimersheim, www.lanagrossa.com

Photographer: Cathleen Wolf, www.cathleenwolf.com