



[www.lanagrossa.com](http://www.lanagrossa.com)

# COAT · CERTO PRINT

Design 14 – Linea Pura 14

# COAT · CERTO PRINT

## Design 14 – Linea Pura 14



**Size** 36 – 40 (42 – 46)

Instructions are given for smaller size. Figure in parenthesis refers to larger size. When only one figure is given, it applies to both sizes.

**Materials:** 850 (900) g of Lana Grossa **Certo Print** (100% cotton; 115 m/50 g) in Beige/Salmon/Blackberry/Aubergine (**col 108**). Size 5 and 6 mm needles; size 5 mm crochet hook.

**Slip garter selvage:** On every row: Sl first st kwise, k last st.

**Slip stitch selvage:** On every row: K first st, sl last st pwise wyif.

**Chart patt A – D:** Numbers at right edge of charts indicate RS rows, number at left edge of charts indicates WS row. Work to patt rep, work 2 sts between arrows for patt rep, work to end of chart. Sts shown in grey are worked as two-stitch selvage. Work single selvage sts as given in instructions. Work rows 1 – 3 once, then rep rows 2 and 3. **Note:** 1 stitch and 1 yo are treated as 1 stitch.

**Full-fashion decrease:** At beg of RS row, patt over 3 sts, k3tog tbl; at end of RS row, work to last 6 sts, k3tog, patt to end.

**Gauge:** 22 sts and 28 rows = 10 x 10 cm in chart patt on size 6 mm needles.

**Back:** With size 6 mm needles cast on 121 (133) sts. Working first and last st as slip garter selvage, work chart A for 176 rows and piece meas 63 cm from cast-on. Place marker in first and last st on last WS row to indicate beg of armholes. Cont in patt for 50 (54) rows and piece meas 18 (19) cm from armhole markers. Shape shoulders and neck: At each shoulder edge, bind off 5 (6) sts 1 time, then 5 sts 5 times, 4 sts 2 times (then 6 sts 3 times, 5 sts 4 times). At same time, when

piece meas 4 cm from beg of shoulder shaping, shape neck as foll: Next row (RS): Bind off center 41 sts. Working each side separately, bind off 1 st at each neck edge 2 times. No sts rem.

**Left front:** With size 6 mm needles cast on 63 (69) sts. Working a slip garter selvage at right edge, work chart B for 136 (140) rows and piece meas 49 (50) cm from cast-on. Shape neck: Working full-fashion dec, dec 2 sts at end of next RS row, then [every 8th row 1 time, then every 10th row 1 time] 5 times, then every 8th row 1 time. At same time, when same length as back to armhole, place armhole marker at right edge and when same length as back to shoulder, shape shoulder at right edge same as for back, knitting last 2 sts tog during last bind-off. No sts rem.

**Right front:** Work same as left front, reversing all shaping and patt placement.

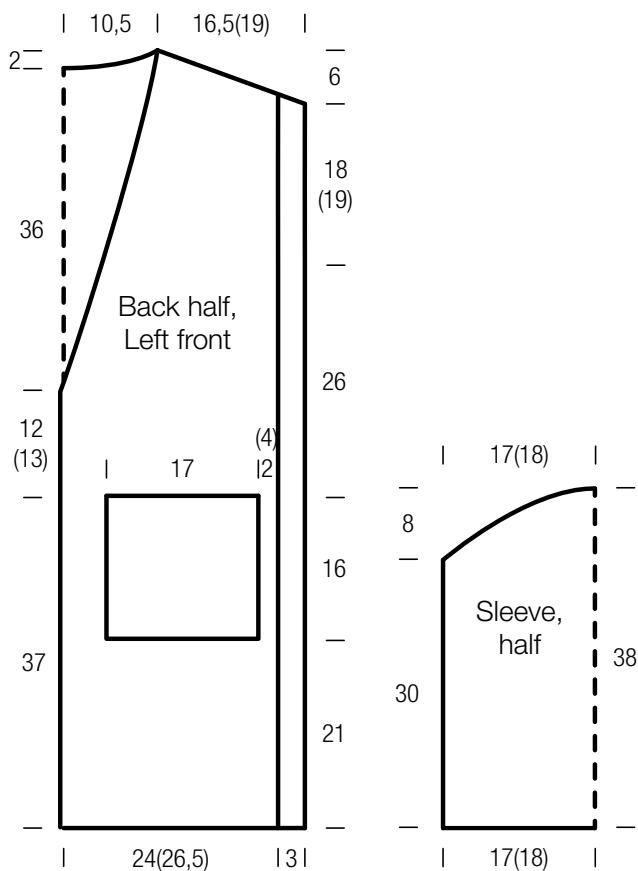
**Sleeves:** With size 6 mm needles cast on 77 (81) sts. Work chart C for 84 rows and piece meas 30 cm from cast-on. Shape sleeve cap: Bind off 3 sts at beg of next 22 rows. Bind off rem 11 (15) sts.

**Pockets:** Make 2. With size 5 mm needles cast on 39 sts. Change to size 6 mm needles. Working first and last st as slip st selvage, work chart D for 44 rows and piece meas 16 cm from cast-on. Next (bind-off) row: \* K1tbl, k2tog tbl, sl sts back to left needle; rep from \* to last 4 sts. K2tog 2 times = 2 sts. Pass 2nd st over last st. Cut yarn and fasten off last st.

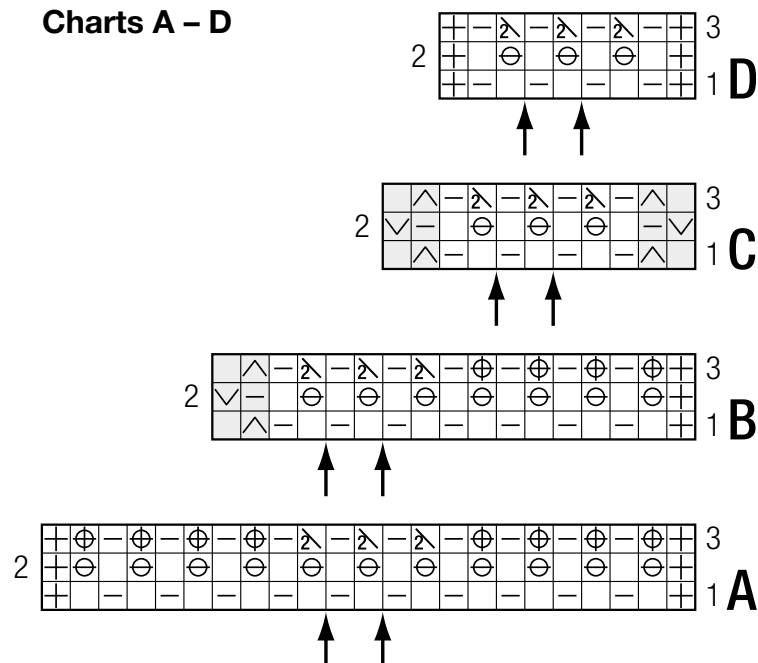
**Finishing:** Pin pieces to measurements and block. Referring to schematic for placement, sew pockets to fronts. Sew shoulder seams. Sew on sleeves between markers. Sew side and sleeve seams. Sew all seams 1 st in from edge. With size 5 mm crochet hook, sl st along back neck edge, easing edge slightly in.

# COAT · CERTO PRINT

## Design 14 – Linea Pura 14



### Charts A – D



### Chart key:

- ⊕ = selvage st
- = k1
- ⊖ = p1
- ⊗ = make a yo, then sl next st pwise
- ⊕ = ktog slipped st with its yo
- ⊗ = ktog tbl slipped st with its yo
- ✓ = sl 1 pwise wyif
- △ = sl 1 pwise wyib



## Gauge Swatch

### Before you begin ...

...make a gauge swatch. Use the recommended needles, yarns and pattern stitch for your gauge swatch. It should measure approx. 12 cm x 12 cm. Cast-on and bind-off rows, as well as selvage stitches should not be included in the measurement. Pin your swatch and block it as you would the finished pieces of the garment. Count stitches and rows over 10 cm. If your gauge swatch is too small, switch to larger needles. If your gauge swatch is too big, switch to smaller needles.



## Abbreviations

**beg** = begin(ning) · **ch** = chain · **cont** = continue · **dec** = decreas(e)(ing) · **inc** = increas(e)(ing) · **k** = knit · **kwise** = as if to knit  
**meas** = measures · **M1L** = lift strand between sts from front to back and knit this strand through the back loop · **M1R** = lift strand between sts from the back and knit this strand through the front loop · **patt** = pattern · **pm** = place marker · **p** = purl  
**pwise** = as if to purl · **rem** = remain(ing) · **rep** = repeat(s) · **rev St st** = reverse stockinette stitch · **rnd(s)** = round(s) · **RS** = right side · **sc** = single crochet · **skp** = slip 1 stitch as if to knit, knit 1 stitch, pass slipped stitch over knitted stitch · **sk2p** = slip 1 stitch as if to knit, knit 2 together, pass slipped stitch over knitted stitch · **s2kp** = slip 2 stitches as if to knit, k 1 stitch, pass slipped stitches over knitted stitch · **sl** = slip · **st(s)** = stitch(es) · **St st** = stockinette stitch · **tbl** = through the back loop · **tog** = together · **wyib** = with yarn in back of work · **wyif** = with yarn in front of work · **WS** = wrong side · **yo(s)** = yarn over(s)

### Publisher's Info

**Publisher:** Lana Grossa GmbH, Gaimersheim, [www.lanagrossa.com](http://www.lanagrossa.com)

**Photographer:** Cathleen Wolf, [www.cathleenwolf.com](http://www.cathleenwolf.com)