



www.lanagrossa.com

CARDIGAN · FOURSEASON

Design 28 – Linea Pura 14

CARDIGAN · FOURSEASON

Design 28 – Linea Pura 14



Size 36 – 40 (42 – 46, 48/50)

Instructions are given for first size. Figures in parenthesis refer to larger sizes. When only one figure is given, it applies to all sizes.

Materials: 650 (700, 750) g of Lana Grossa **Fourseason** (45% extrafine organic Merino wool, 40% organic cotton, 15% recycled cashmere; 105 m/50 g) in Grey Purple (**col 17**). Size 6 and 7 mm needles.

Two-stitch selvage: On RS row, k1, sl 1 pwise wyib, work to last 2 sts, sl 1 pwise wyib, k1. On WS row, sl 1 pwise wyif, p1, work to last 2 sts, p1, sl 1 pwise wyif.

Twisted garter st: Ktbl every row.

Main patt: Work according to chart. Numbers at left edge of chart indicate WS rows, numbers at right edge of chart indicate RS rows. Chart begins with a WS row. Work to patt rep, work 1 st between arrows for patt rep, work to end of chart. Rep rows 1 – 14 for main patt.

Full-fashion increase: On RS row: M1R, 3 sts in from edge.

Full-fashion decrease: At beg of RS row, patt over first 3 sts, k2tog; at end of RS row, work to last 5 sts, skp, patt to end.

Gauge: 17 sts and 22 rows = 10 x 10 cm in main patt on size 6 mm needles.

Back: With size 6 mm needles cast on 104 (112, 118) sts. Beg with a WS row, work in main patt according to chart and shape sides as foll: Working full-fashion inc, inc 1 st at each end of 6th row from cast-on, then every 16th row 6 times = 118 (126, 132) sts. Work increased sts into patt. Cont in main patt until a total of 110 (114, 118) rows has been worked and piece meas 50 (52, 54) cm from cast-on. Place marker in first and last st on last row to indicate beg of armholes. Cont in

main patt for 53 rows and piece meas 24 cm from armhole markers. Bind off all sts. Mark center 24 sts for neck.

Left front: With size 6 mm needles cast on 53 (57, 60) sts. Beg with a WS row, work in main patt according to chart, work full-fashion incs for side shaping at right edge same as for back. At same time, when a total of 79 (83, 87) rows = 36 (38, 40) cm has been worked from cast-on, shape neck as foll: Working full-fashion dec, dec 1 st at end of next RS row, then every 6th row 12 times = 47 (51, 54) sts and when same length as back to shoulder, bind off all sts.

Right front: Work same as left front, reversing all shaping and patt placement.

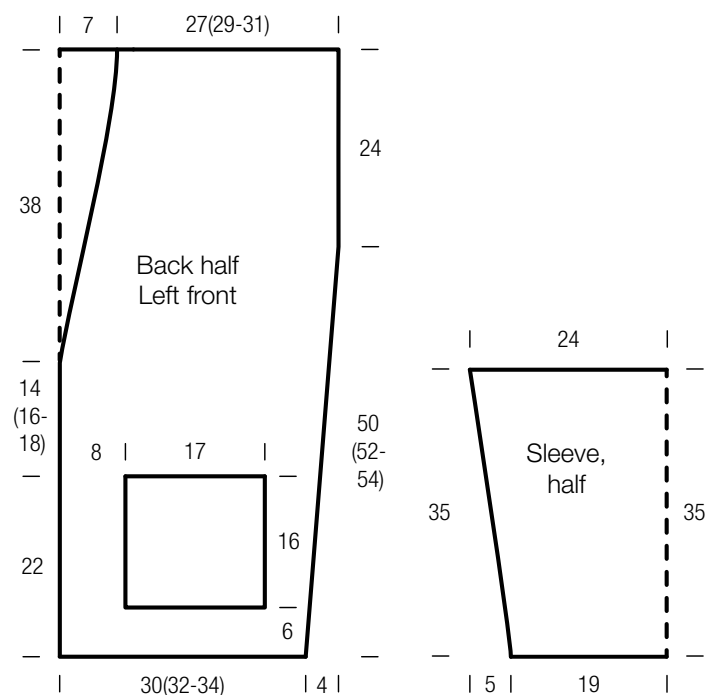
Sleeves: With size 6 mm needles cast on 67 sts. Beg with a WS row, work in main patt according to chart and shape sleeve as foll: Working full-fashion inc, inc 1 st at each end of 6th row from cast-on, then every 8 row 8 times = 85 sts. Work increased sts into patt. Work even until a total of 77 rows has been worked and piece meas 35 cm from cast-on. Loosely bind off all sts.

Pockets: Make 2. With size 6 mm needles cast on 31 sts. Beg and end with a WS row, work in main patt according to chart for 35 rows and piece meas 16 cm from cast-on. Bind off all sts.

Finishing: Pin pieces to measurements and block. Referring to schematic for placement, sew pockets to fronts. Sew shoulder seams. Sew on sleeves. Sew side and sleeve seams. Sew all seams 1 st in from edge. **Belt:** With size 7 mm needles cast on 6 sts. Next row (RS): Two-stitch selvage, work 2 sts in twisted garter st, two-stitch selvage. Work in patt as set by last row until piece meas 120 (130, 140) cm from cast-on. Next row: K2tog, work 2 sts in twisted garter st, k2tog = 4 sts. Next row: K4tog. Cut yarn and fasten off last st. Thread cast-on tail through sts on first row and pull tight. Carefully weave in all ends.

CARDIGAN · FOURSEASON

Design 28 – Linea Pura 14



Chart

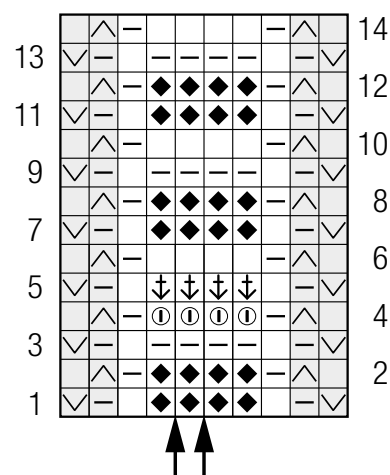


Chart key:

- = k1
- ▢ = p1
- ◆ = k1tbl
- ① = k1, make yo
- ⬇ = p1, dropping yo
- ↙ = sl 1 pwise wyif
- ↘ = sl 1 pwise wyib

Gauge Swatch

Before you begin ...

...make a gauge swatch. Use the recommended needles, yarns and pattern stitch for your gauge swatch. It should measure approx. 12 cm x 12 cm. Cast-on and bind-off rows, as well as selvage stitches should not be included in the measurement. Pin your swatch and block it as you would the finished pieces of the garment. Count stitches and rows over 10 cm. If your gauge swatch is too small, switch to larger needles. If your gauge swatch is too big, switch to smaller needles.



Abbreviations

beg = begin(ning) · **ch** = chain · **cont** = continue · **dec** = decreas(e)(ing) · **inc** = increas(e)(ing) · **k** = knit · **kwise** = as if to knit
meas = measures · **M1L** = lift strand between sts from front to back and knit this strand through the back loop · **M1R** = lift strand between sts from the back and knit this strand through the front loop · **patt** = pattern · **pm** = place marker · **p** = purl
pwise = as if to purl · **rem** = remain(ing) · **rep** = repeat(s) · **rev St st** = reverse stockinette stitch · **rnd(s)** = round(s) · **RS** = right side · **sc** = single crochet · **skp** = slip 1 stitch as if to knit, knit 1 stitch, pass slipped stitch over knitted stitch · **sk2p** = slip 1 stitch as if to knit, knit 2 together, pass slipped stitch over knitted stitch · **s2kp** = slip 2 stitches as if to knit, k 1 stitch, pass slipped stitches over knitted stitch · **sl** = slip · **st(s)** = stitch(es) · **St st** = stockinette stitch · **tbl** = through the back loop · **tog** = together · **wyib** = with yarn in back of work · **wyif** = with yarn in front of work · **WS** = wrong side · **yo(s)** = yarn over(s)

Publisher's Info

Publisher: Lana Grossa GmbH, Gaimersheim, www.lanagrossa.com

Photographer: Cathleen Wolf, www.cathleenwolf.com