



www.lanagrossa.com

PULLOVER · FOURSEASON

Design 29 – Linea Pura 14

PULLOVER • FOURSEASON

Design 29 – Linea Pura 14



Size One size

Materials: 400 g of Lana Grossa **Fourseason** (45% superfine organic Merino wool, 40% organic cotton, 15% recycled cashmere; 105 m/50 g) in Grey Purple (**col 17**). Size 5.5 mm needles.

Main patt: Work according to chart. Numbers at left edge of chart indicate WS rows, numbers at right edge of chart indicate RS rows. Chart begins with a WS row. Work to patt rep, work 1 st between arrows for patt rep, work to end of chart. Rep rows 1 – 14 for main patt.

Full-fashion increase: On RS row: M1R, 3 sts in from edge.

Gauge: 17.5 sts and 20 rows = 10 x 10 cm in main patt on size 5.5 mm needles.

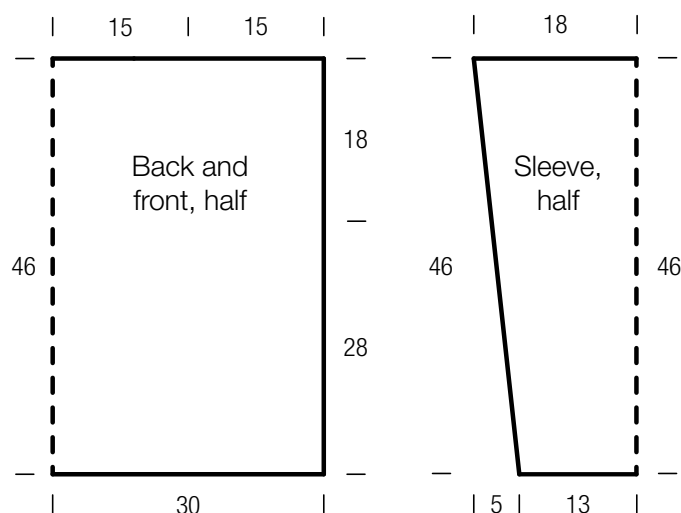
Back: With size 5.5 mm needles cast on 108 sts. Beg with a WS row, work in main patt according to chart for 56 rows and

piece meas 28 cm from cast-on. Place marker in first and last st on last row to indicate beg of armholes. Cont in main patt for 36 rows and piece meas 18 cm from armhole markers. Bind off all sts. Mark center 52 sts for neck.

Front: Work same as back.

Sleeves: With size 5.5 mm needles cast on 48 sts. Beg with a WS row, work in main patt according to chart and shape sleeve as foll: Working full-fashion inc, inc 1 st at each end of 6th row from cast-on, then every 10th row 8 times = 66 sts. Work increased sts into patt. Work even until a total of 92 rows has been worked and piece meas 46 cm from cast-on. Loosely bind off all sts.

Finishing: Pin pieces to measurements and block. Sew shoulder seams. Sew on sleeves. Sew side and sleeve seams. Sew all seams 1 st in from edge.



Chart

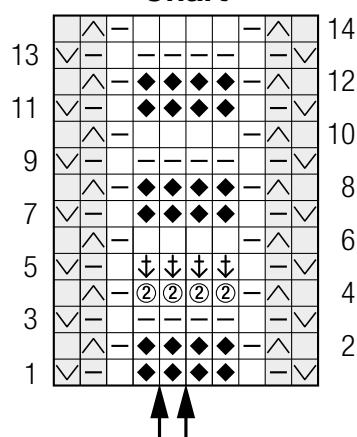


Chart key:

- = k1
- ▢ = p1
- ◆ = k1tbl
- ② = k1, then yo twice
- ⬇ = p1, dropping dbl yo
- ✓ = sl 1 pwise wyif
- △ = sl 1 pwise wyib

Gauge Swatch

Before you begin ...

...make a gauge swatch. Use the recommended needles, yarns and pattern stitch for your gauge swatch. It should measure approx. 12 cm x 12 cm. Cast-on and bind-off rows, as well as selvage stitches should not be included in the measurement. Pin your swatch and block it as you would the finished pieces of the garment. Count stitches and rows over 10 cm. If your gauge swatch is too small, switch to larger needles. If your gauge swatch is too big, switch to smaller needles.



Abbreviations

beg = begin(ning) · **ch** = chain · **cont** = continue · **dec** = decreas(e)(ing) · **inc** = increas(e)(ing) · **k** = knit · **kwise** = as if to knit
meas = measures · **M1L** = lift strand between sts from front to back and knit this strand through the back loop · **M1R** = lift strand between sts from the back and knit this strand through the front loop · **patt** = pattern · **pm** = place marker · **p** = purl
pwise = as if to purl · **rem** = remain(ing) · **rep** = repeat(s) · **rev St st** = reverse stockinette stitch · **rnd(s)** = round(s) · **RS** = right side · **sc** = single crochet · **skp** = slip 1 stitch as if to knit, knit 1 stitch, pass slipped stitch over knitted stitch · **sk2p** = slip 1 stitch as if to knit, knit 2 together, pass slipped stitch over knitted stitch · **s2kp** = slip 2 stitches as if to knit, k 1 stitch, pass slipped stitches over knitted stitch · **sl** = slip · **st(s)** = stitch(es) · **St st** = stockinette stitch · **tbl** = through the back loop · **tog** = together · **wyib** = with yarn in back of work · **wyif** = with yarn in front of work · **WS** = wrong side · **yo(s)** = yarn over(s)

Publisher's Info

Publisher: Lana Grossa GmbH, Gaimersheim, www.lanagrossa.com

Photographer: Cathleen Wolf, www.cathleenwolf.com