



www.lanagrossa.com



**PULLOVER •
SILKHAIR & ABOUT BERLIN VANITY**

Design 01 – Filati Journal 61

PULLOVER • SILKHAIR & ABOUT BERLIN VANITY

Design 01 – Filati Journal 61



Size 36 – 40 (42 – 46)

Instructions are given for smaller size. Figure in parenthesis refers to larger size. When only one figure is given, it applies to both sizes.

Materials: **150 (175) g** of Lana Grossa **Silkhair** (70% superkid mohair, 30% silk; 210 m/25 g) in Off White (**col 52**) and **50 g** of Lana Grossa **About Berlin Vanity** (54% cotton, 21% viscose, 13% silk, 12% polyamide; 130 m/50 g) in Orange/Grey Green/Vanilla/Red Brown variegated (**col 4**). Size 4.5 mm needles; size 4.5 mm circular needle, 60 cm long.

Note: Work with 2 strands Silkhair held tog, work with single strand About Berlin Vanity throughout.

Selvage stitches: On every row: Sl first st kwise, k last st.

Rib patt: K1, p1.

St st: K on RS, p on WS.

Flower motifs: Work in St st in Intarsia technique according to chart. 1 square = 1 st and 1 row. Numbers at right edge of chart indicate RS rows, numbers at left edge of chart indicate WS rows. Work each block of color with separate ball of yarn. Twist yarns around each other at each color change to prevent holes.

Gauge: 18 sts and 26 rows = 10 x 10 cm in St st with size 4.5 mm needles and 2 strands Silkhair held tog.

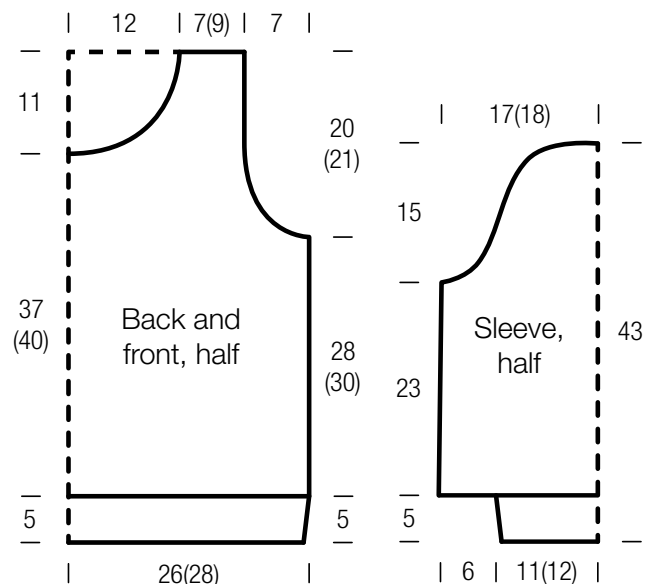
Back: With 2 strands Silkhair held tog cast on 96 (104) sts. Beg and end with a WS row and working first and last st as selvage sts, work in rib patt for 15 rows and piece meas 5 cm from cast-on. Maintaining selvage sts, work in St st for 72 (78) rows and piece meas 28 (30) cm from end of rib patt. Shape armholes: Bind off 4 sts at beg of next 2 rows, 3 sts at beg of next 2 rows, 2 sts at beg of next 2 rows, 1 st at beg of next 6 rows = 72 (80) sts. Work even until 52 (54) rows have been worked from beg of armhole shaping and armhole meas 20 (21) cm. Next row (RS): Bind off 14 (18) sts, k44 and place on holder, bind off rem 14 (18) sts.

Front: Work same as back until 12 rows = 4.5 cm have been worked from end of rib patt. Next row (RS): With Silkhair, selvage st, 39 (43) sts in St st; with About Berlin Vanity, 3 sts in St st; with Silkhair, 52 (56) sts in St st, selvage st. Cont in St st and work flower motifs according to chart, ending with chart row 83. Work remainder of front with Silkhair. At same time, when 24 (26) rows have been worked from beg of armhole

shaping and armhole meas 9 (10) cm, shape neck as foll: Next row (RS): Bind off center 10 sts. Working each side separately, bind off 3 sts at each neck edge 2 times, 2 sts 3 times, 1 st 3 times, 1 st every 4th row 2 times and when same length as back to shoulders, bind off rem 14 (18) sts for each shoulder.

Sleeves: With 2 strands Silkhair held tog cast on 42 (46) sts. Beg and end with a WS row and working first and last st as selvage sts, work in rib patt for 15 rows and piece meas 5 cm from cast-on, increasing 22 sts evenly across last WS row = 64 (68) sts. Maintaining selvage sts, work in St st for 12 rows and piece meas 4.5 cm from end of rib patt. Next row (RS): With Silkhair, selvage st, 35 (37) sts in St st; with About Berlin Vanity, 3 sts in St st; with Silkhair, 24 (26) sts in St st, selvage st. Cont in St st and work flower motif according to chart, ending with chart row 50. Work remainder of sleeve with Silkhair. At same time, when 60 rows = 23 cm have been worked from end of rib patt, shape sleeve cap as foll: Bind off 4 sts at beg of next 2 rows, 3 sts at beg of next 2 rows, 2 sts at beg of next 2 rows, 1 st at beg of next 6 rows, [work 4 rows even, bind off 1 st at beg of next 2 rows] 3 times, then bind off 1 st at beg of next 4 rows, 2 sts at beg of next 2 rows, 3 sts at beg of next 2 rows, 4 sts at beg of next 2 rows. Bind off rem 12 (16) sts.

Finishing: Pin pieces to measurements and block. Sew shoulder seams. **Neckband:** With circular needle and 2 strands Silkhair held tog, pick up and k 116 sts evenly around neck edge, including 44 sts from back neck holder. Place beg of rnd marker and join for working in rnds. Work rib patt in rnds for 4 cm. Bind off all sts in rib. Sew in sleeves. Sew side and sleeve seams.



PULLOVER • SILKHAIR & ABOUT BERLIN VANITY

Design 01 – Filati Journal 61



Chart

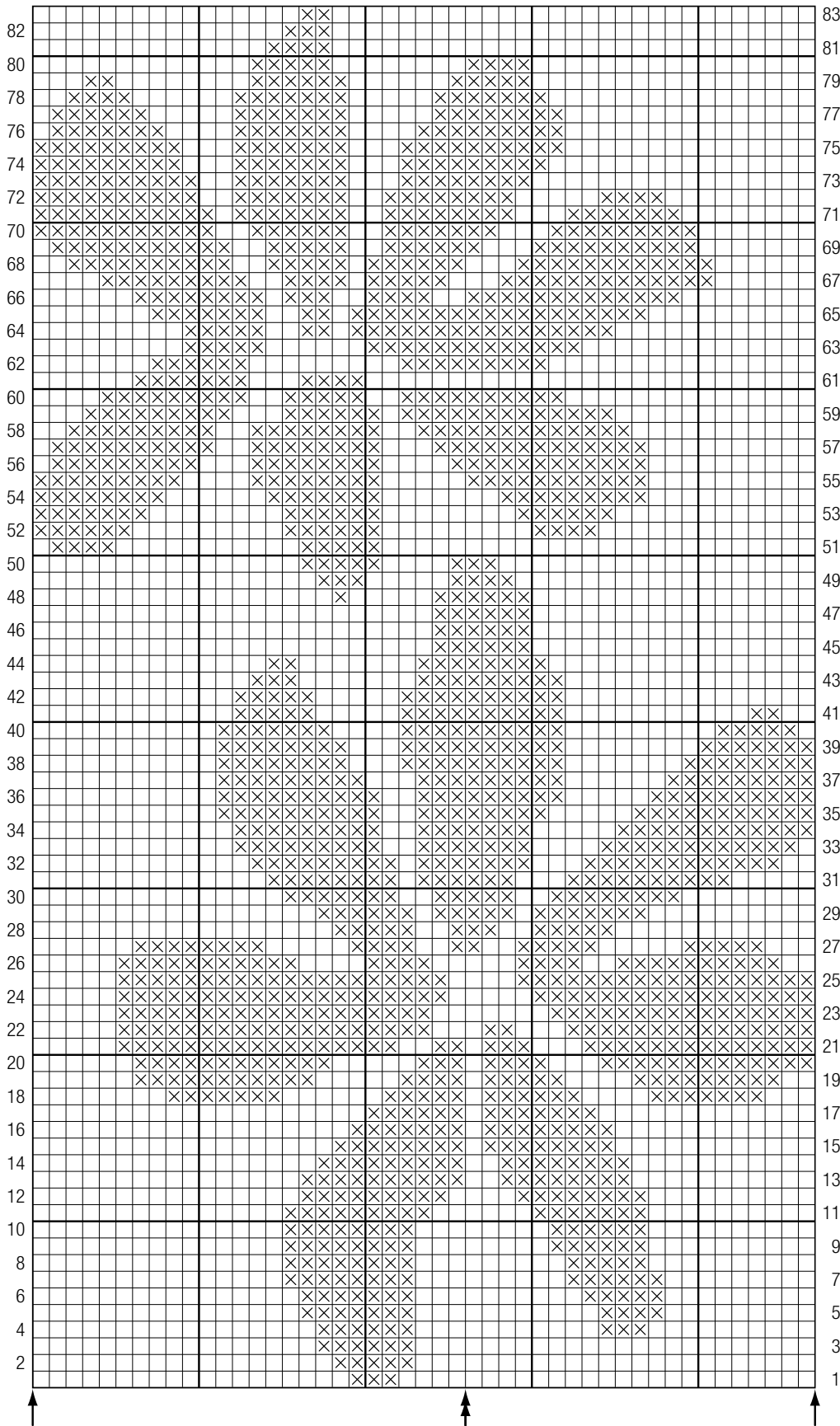


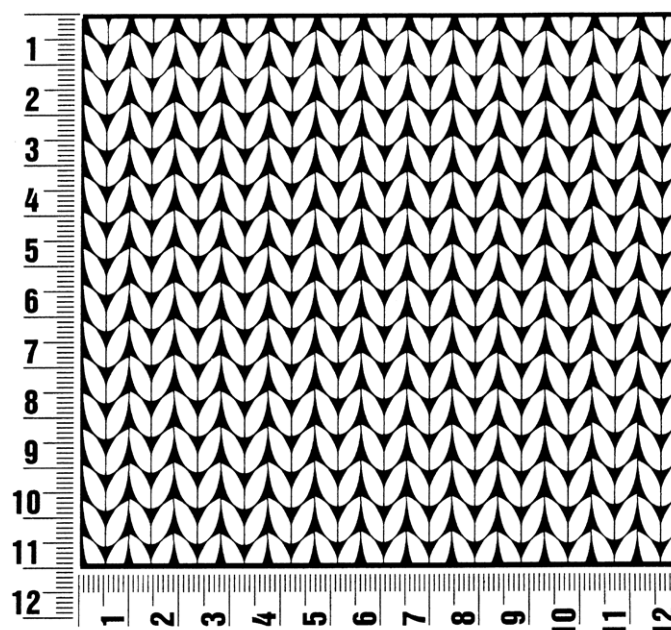
Chart key:

- = 1 st in St st with 2 strands Silkhair
- ⊗ = 1 st in St st with single strand About Berlin Vanity

Gauge Swatch

Before you begin ...

...make a gauge swatch. Use the recommended needles, yarns and pattern stitch for your gauge swatch. It should measure approx. 12 cm x 12 cm. Cast-on and bind-off rows, as well as selvage stitches should not be included in the measurement. Pin your swatch and block it as you would the finished pieces of the garment. Count stitches and rows over 10 cm. If your gauge swatch is too small, switch to larger needles. If your gauge swatch is too big, switch to smaller needles.



Abbreviations

beg = begin(ning) · **ch** = chain · **cont** = continue · **dec** = decreas(e)(ing) · **inc** = increas(e)(ing) · **k** = knit · **kwise** = as if to knit
meas = measures · **M1L** = lift strand between sts from front to back and knit this strand through the back loop · **M1R** = lift strand between sts from the back and knit this strand through the front loop · **patt** = pattern · **pm** = place marker · **p** = purl
pwise = as if to purl · **rem** = remain(ing) · **rep** = repeat(s) · **rev St st** = reverse stockinette stitch · **rnd(s)** = round(s) · **RS** = right side · **sc** = single crochet · **skp** = slip 1 stitch as if to knit, knit 1 stitch, pass slipped stitch over knitted stitch · **sk2p** = slip 1 stitch as if to knit, knit 2 together, pass slipped stitch over knitted stitch · **s2kp** = slip 2 stitches as if to knit, k 1 stitch, pass slipped stitches over knitted stitch · **sl** = slip · **st(s)** = stitch(es) · **St st** = stockinette stitch · **tbl** = through the back loop · **tog** = together · **wyib** = with yarn in back of work · **wyif** = with yarn in front of work · **WS** = wrong side · **yo(s)** = yarn over(s)

Publisher's Info

Publisher: Lana Grossa GmbH, Gaimersheim, www.lanagrossa.com

Photographer: Nicolas Olonetzky, www.olonetzky.com