



www.lanagrossa.com

TOP • ALESSIA

Design 08 – Filati Journal 61

Size 34/36 (38/40)

Instructions are given for smaller size. Figure in parenthesis refers to larger size. When only one figure is given, it applies to both sizes.

Materials: 150 (200) g of Lana Grossa **Alessia** (76% cotton, 20% recycled polyester, 4% polyester; 135 m/50 g) in Cream/Silver Grey (**col 1**). Size 3 and 4 mm needles.

Selvage stitches: On every row: Sl first st kwise, k last st.

Rib patt: K1, p1.

St st: K on RS, p on WS.

Front and back V-neck shaping: Work according to chart. Numbers at right edge of chart indicate RS rows; on WS rows, work sts as they appear. Chart shows size 34/36 in its entirety. Changes for size 38/40 are given in instructions. Work rows 59 – 88 once, then rep rows 87 and 88.

Gauge: 21.5 sts and 32 rows = 10 x 10 cm in St st on size 4 mm needles.

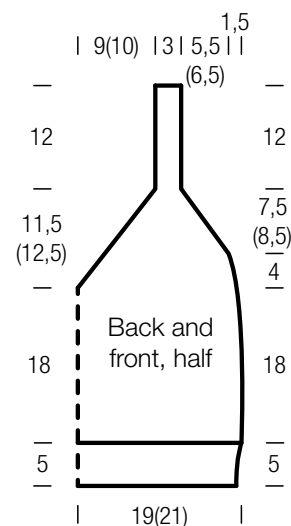
Back: With size 3 mm needles cast on 84 (92) sts. Working first and last st as selvage sts, work in rib patt for 20 rows and piece meas 5 cm from cast-on. Change to size 4 mm needles. Maintaining selvage sts, work in St st for 58 rows = 18 cm. Work chart row 59 and divide work at center. Working each side separately, work decs at each neck edge as shown on chart. For size 38/40, work 2 additional decs. **At same time**, beg on chart row 73, work armhole decs as shown. For size 38/40, work 2 additional decs. Work to end of chart = 11 sts rem for each strap. Cont in patt across strap sts for 12 cm. Bind off all sts.

Front: Work same as back.

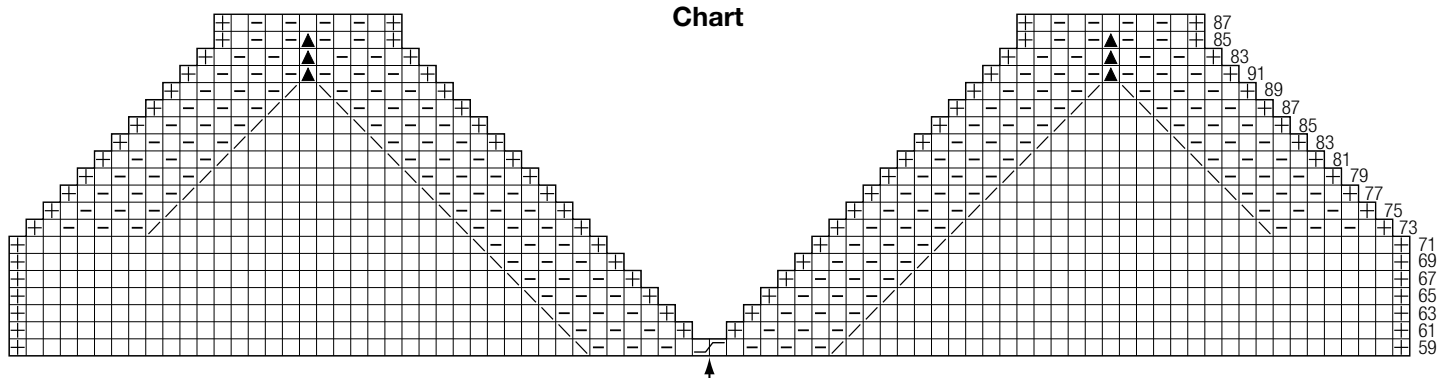
Finishing: Pin pieces to measurements and block. Sew strap and side seams.

Chart key:

- ☒ = selvage st
- = k1
- ▢ = p1
- ▣ = k2tog
- ▤ = skp: sl 1 kwise, k1, pass slipped st over knitted st
- ▥ = s2kp: sl 2 kwise, k1, pass slipped sts over knitted st
- ▦ = k 2nd st on left needle, k first st on left needle, sl both sts to right needle



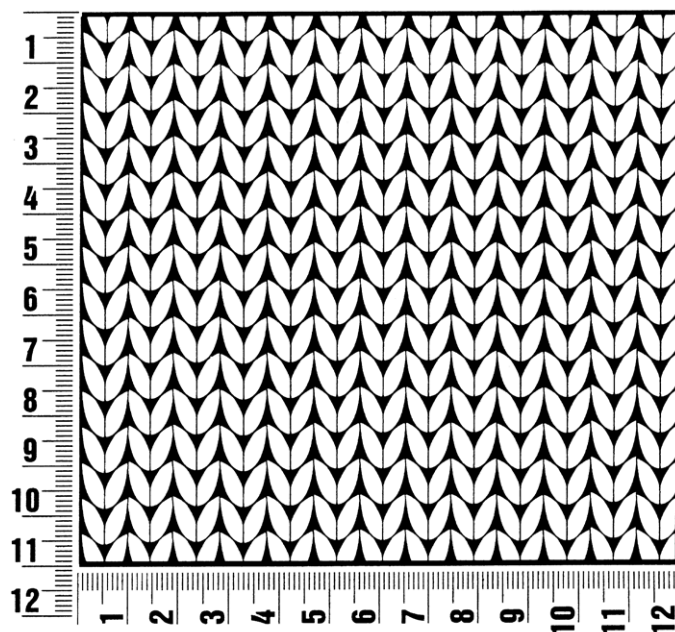
Chart



Gauge Swatch

Before you begin ...

...make a gauge swatch. Use the recommended needles, yarns and pattern stitch for your gauge swatch. It should measure approx. 12 cm x 12 cm. Cast-on and bind-off rows, as well as selvage stitches should not be included in the measurement. Pin your swatch and block it as you would the finished pieces of the garment. Count stitches and rows over 10 cm. If your gauge swatch is too small, switch to larger needles. If your gauge swatch is too big, switch to smaller needles.



Abbreviations

beg = begin(ning) · **ch** = chain · **cont** = continue · **dec** = decreas(e)(ing) · **inc** = increas(e)(ing) · **k** = knit · **kwise** = as if to knit
meas = measures · **M1L** = lift strand between sts from front to back and knit this strand through the back loop · **M1R** = lift strand between sts from the back and knit this strand through the front loop · **patt** = pattern · **pm** = place marker · **p** = purl
pwise = as if to purl · **rem** = remain(ing) · **rep** = repeat(s) · **rev St st** = reverse stockinette stitch · **rnd(s)** = round(s) · **RS** = right side · **sc** = single crochet · **skp** = slip 1 stitch as if to knit, knit 1 stitch, pass slipped stitch over knitted stitch · **sk2p** = slip 1 stitch as if to knit, knit 2 together, pass slipped stitch over knitted stitch · **s2kp** = slip 2 stitches as if to knit, k 1 stitch, pass slipped stitches over knitted stitch · **sl** = slip · **st(s)** = stitch(es) · **St st** = stockinette stitch · **tbl** = through the back loop · **tog** = together · **wyib** = with yarn in back of work · **wyif** = with yarn in front of work · **WS** = wrong side · **yo(s)** = yarn over(s)

Publisher's Info

Publisher: Lana Grossa GmbH, Gaimersheim, www.lanagrossa.com
Photographer: Nicolas Olonetzky, www.olonetzky.com