



[www.lanagrossa.com](http://www.lanagrossa.com)

# CARDIGAN • RISERVA

Design 17 – Filati Journal 61

# CARDIGAN • RISERVA

## Design 17 – Filati Journal 61



### Size One size

**Materials:** 450 g of Lana Grossa **Riserva** (70% organic cotton, 30% recycled polyamide; 125 m/50 g) in Olive (**col 18**). Size 4 and 5 mm needles; size 4 mm circular needle, 80 cm long; five 23 mm buttons.

**Selvage stitches:** On every row: Sl first st kwise, k last st.

**Rib patt:** K1, p1.

**Lace patt:** Work according to chart A. Numbers at right edge of chart indicate RS rows; on WS rows, work sts as they appear, purl all yos. Work to patt rep, work 14 sts between arrows for patt rep, work to end of chart. Work rows 1 – 48 once, then rep rows 25 – 48.

**6-stitch front band:** Work according to chart B. Number at left edge of chart indicates WS row, number at right edge of chart indicates RS row. Chart begins with a WS row. Rep rows 1 and 2.

**St st:** K on RS, p on WS.

**Full-fashion decrease:** At beg of RS row, selvage st, 1 st in St st, k2tog; at end of RS row, work to last 4 sts, skp, 1 st in St st, selvage st.

**Full-fashion increase:** On RS row: M1R, 1 st in from edge.

**Two-stitch selvage:** On RS row, k1, sl 1 pwise wyib, patt to last 2 sts, sl 1 pwise wyib, k1. On WS row, sl 1 pwise wyif, p1, work to last 2 sts, p1, sl 1 pwise wyif.

**Gauge:** 20.5 sts and 30 rows = 10 x 10 cm in lace patt on size 5 mm needles.

**Back:** With size 4 mm needles cast on 89 sts. Next row (WS): Selvage st, \* p1, k1; rep from \* to last 2 sts, p1, selvage st. Work in rib patt as set by last row for a total of 13 rows and piece meas 4 cm from cast-on. Change to size 5 mm needles. Work chart A for 72 rows = 24 cm. Shape armholes: Bind off 4 sts at beg of next 2 rows. Working full-fashion dec, dec 1 st at each end of next 5 RS rows = 71 sts. Work even until 58 rows have been worked from beg of armhole shaping and armhole meas 19 cm. Shape shoulders and neck: At each shoulder edge bind off 4 sts 1 time, 3 sts 5 times. At same time, on 4th RS shoulder bind-off row, shape neck as foll: Bind off center 27 sts. Working each side separately, bind off 2 sts at each neck edge 1 time, 1 st 1 time. No sts rem.

**Left front:** With size 4 mm needles cast on 51 sts. Next row (WS): Work chart B over first 6 sts; beg with k1 and end with p1, work rib patt over next 44 sts, selvage st. Work in patt as set by last row for a total of 13 rows and piece meas 4 cm from cast-on. Change to size 5 mm needles. Next row (RS): Work chart A over first 45 sts, ending 2 sts before end of chart; work chart B as established over rem 6 sts. Work in patt as set by last row until piece meas same length as back to armhole. Shape armhole at right edge same as for back = 42 sts. Work even until 41 rows have been worked from beg of armhole shaping and armhole meas 14 cm. Shape neck: At beg of WS rows, bind off 8 sts 1 time and at same time, k2tog 3 times across 6-st front band, then bind off 4 sts 1 time, 3 sts 1 time, 2 sts 2 times, 1 st 4 times and when same length as back to shoulder, shape shoulder at right edge same as for back. No sts rem.

**Right front:** Work same as left front, reversing all shaping and patt placement and working 5 buttonholes at beg of RS rows as foll: Work first 3 sts, [skp, yo] for buttonhole, work to end. Work first buttonhole when piece meas 5 cm from cast-on edge, rem 4 buttonholes spaced 9 cm apart.

**Sleeves:** With size 4 mm needles cast on 47 sts. Next row (WS): Selvage st, \* p1, k1; rep from \* to last 2 sts, p1, selvage st. Work in rib patt as set by last row for a total of 13 rows and piece meas 4 cm from cast-on. Change to size 5 mm needles. Work chart A and shape sleeve as foll: Working full-fashion inc, inc 1 st at each end of 17th row, then every 16th row 5 times = 59 sts. Work increased sts in St st. Work even until chart A has been worked for a total of 124 rows = 41 cm. Shape sleeve cap: Bind off 4 sts at beg of next 2 rows. Working full-fashion dec, dec 1 st at each end of next 19 RS rows. Work 1 WS row. Bind off 2 sts at beg of next 2 rows. Bind off rem 9 sts.

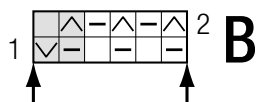
**Finishing:** Pin pieces to measurements and block. Sew shoulder seams. **Neckband:** With size 4 mm circular needle, pick up and k 79 sts evenly along right front, back and left front neck edge, omitting front bands. Next row (WS): Two-stitch selvage, \* k1, p1; rep from \* to last 3 sts, k1, two-stitch selvage. Work in rib patt as set by last row for a total of 7 rows = 2.5 cm. Bind off all sts in rib. Sew in sleeves. Sew side and sleeve seams. Sew on buttons.



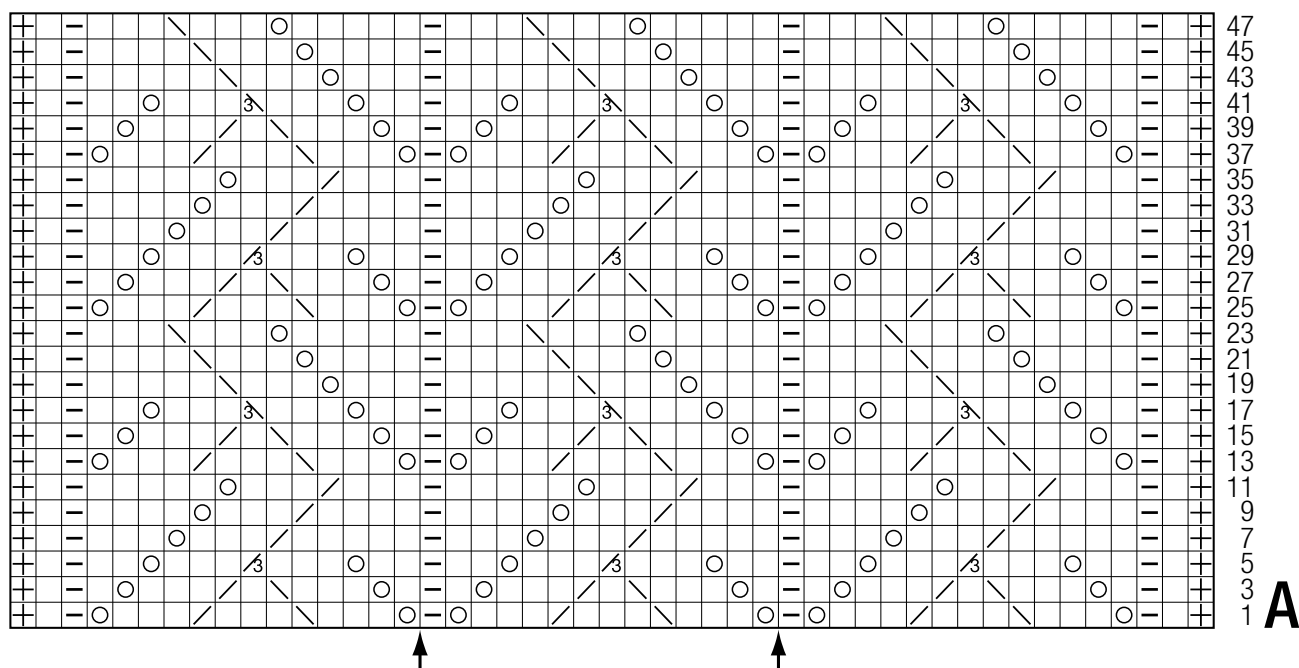
## Design 17 – Filati Journal 61



- ⊕ = salvage st  
 □ = k1  
 ▤ = p1  
 ⊙ = yo  
 ◻ = k2tog  
 ◻ = k3tog  
 ◻ = skp: sl 1 kwise, k1, pass slipped st over knitted st  
 ◻ = sk2p: sl 1 kwise, k2tog, pass slipped st over knitted st  
 ◻ = sl 1 pwise wyib  
 ◻ = sl 1 pwise wyif



## Charts A and B



## Gauge Swatch

### Before you begin ...

...make a gauge swatch. Use the recommended needles, yarns and pattern stitch for your gauge swatch. It should measure approx. 12 cm x 12 cm. Cast-on and bind-off rows, as well as selvage stitches should not be included in the measurement. Pin your swatch and block it as you would the finished pieces of the garment. Count stitches and rows over 10 cm. If your gauge swatch is too small, switch to larger needles. If your gauge swatch is too big, switch to smaller needles.



## Abbreviations

**beg** = begin(ning) · **ch** = chain · **cont** = continue · **dec** = decreas(e)(ing) · **inc** = increas(e)(ing) · **k** = knit · **kwise** = as if to knit  
**meas** = measures · **M1L** = lift strand between sts from front to back and knit this strand through the back loop · **M1R** = lift strand between sts from the back and knit this strand through the front loop · **patt** = pattern · **pm** = place marker · **p** = purl  
**pwise** = as if to purl · **rem** = remain(ing) · **rep** = repeat(s) · **rev St st** = reverse stockinette stitch · **rnd(s)** = round(s) · **RS** = right side · **sc** = single crochet · **skp** = slip 1 stitch as if to knit, knit 1 stitch, pass slipped stitch over knitted stitch · **sk2p** = slip 1 stitch as if to knit, knit 2 together, pass slipped stitch over knitted stitch · **s2kp** = slip 2 stitches as if to knit, k 1 stitch, pass slipped stitches over knitted stitch · **sl** = slip · **st(s)** = stitch(es) · **St st** = stockinette stitch · **tbl** = through the back loop · **tog** = together · **wyib** = with yarn in back of work · **wyif** = with yarn in front of work · **WS** = wrong side · **yo(s)** = yarn over(s)

### Publisher's Info

**Publisher:** Lana Grossa GmbH, Gaimersheim, [www.lanagrossa.com](http://www.lanagrossa.com)

**Photographer:** Nicolas Olonetzky, [www.olonetzky.com](http://www.olonetzky.com)