

CROCHET VEST



### CROCHET VEST

**Size** 36/38 (40/42, 44/46) Instructions are given for first size. Figures in parenthesis refer to larger sizes. When only one figure is given, it applies to all sizes.

**Materials:** 450 (500, 550) g of Lana Grossa **About Berlin Spoty** (55% cotton, 26% polyamide, 19% polyester; 125 m/50 g) in Copper Variegated (**col 10**). Size 4 mm crochet hook; one 18 mm button.

**Crochet patt:** Work according to chart. Numbers at right edge of chart indicate RS rows, numbers at left edge of chart indicate WS rows. Work first sc on first row in 2nd ch from hook. Beg each row with the number of ch shown on chart. Work to patt rep, work 2 sts between arrows for patt rep, work to end of chart. Work rows 1 – 5 once, then rep rows 4 and 5.

**Decreasing 1 st:** [Work next st to 2nd to last st] 2 times. Wrap yarn over hook and draw through all loops on hook.

**Decreasing several sts:** At beg of row, skip the number of sts given in pattern and work sl st instead; at end of row, leave the number of sts given in pattern unworked.

**Increasing 1 st:** Work 2 sts in 1 st.

**Gauge:** 20.5 sts and 14 rows = 10 x 10 cm in crochet patt with size 4 mm hook.

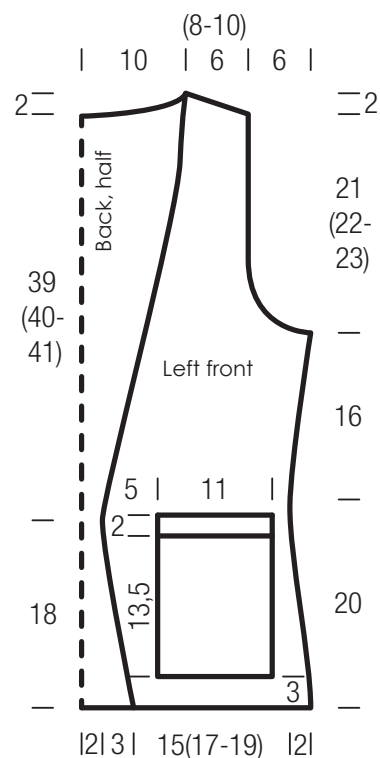
**Back:** With size 4 mm hook, ch 91 (99, 107) + ch 1. Work chart = 91 (99, 107) sts and shape sides as foll: Dec 1 st at each end of 9th row, then every 4th row 3 times = 83 (91, 99) sts. Work even for 7 rows. Inc 1 st at each end of next row, then every 4th row 3 times = 91 (99, 107) sts. Work even for 9 rows and piece meas approx. 16 cm from first inc row. Shape armholes: Dec 4 sts at each end of next row, 2 sts at each end of next 4 rows = 67 (75, 83) sts. Work even until 30 (31, 32) rows have been worked from beg of armhole shaping and armhole meas 21 (22, 23) cm. Shape neck and shoulders: Leave center 39 sts unworked = 14 (18, 22) sts rem each side. Working each side separately, dec 7 (9, 11) sts at each shoulder edge 1 time = 7 (9, 11) sts rem each side. Work 1 row even. Fasten off.

**Left front:** With size 4 mm hook, ch 37 (41, 45) + ch 1. Work chart = 37 (41, 45) sts and shape front edge as foll: Inc 1 st at beg of 4th row, then every foll 4th row 5 times. Work even for 1 row. Dec 1 st at beg of next row, then every alt row 7 times, then every 4th row 9 times. At same time, work decs and incs for side shaping at right edge same as for back and when same length as back to armhole, shape armhole at right edge same as for back. Work even until same length as back to shoulder. Shape shoulder at right edge same as for back. Fasten off.

**Right front:** Work same as left front, reversing all shaping.

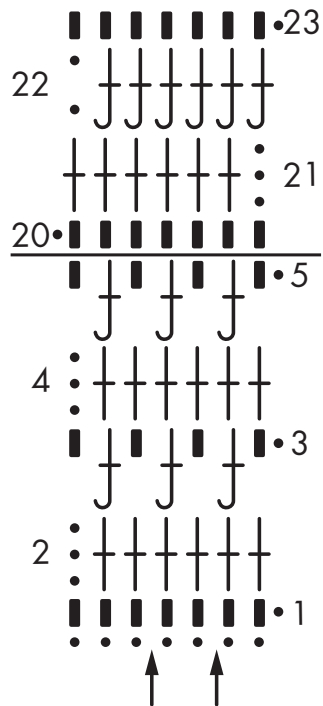
**Pockets:** Make 2. With size 4 mm hook, ch 25 + ch 1. Work chart = 25 sts for 19 rows, then work rows 20 – 23 of chart. Fasten off.

**Finishing:** Pin pieces to measurements and block. Referring to schematic, sew pockets to fronts. Sew shoulder and side seams. Front and neckband: Work 279 (283, 287) sc along right front, back neck and left front edge: 39 sc along bottom 18 cm and 81 (83, 85) sc along shaped edge of right front, 39 sc along back neck edge, 81 (83, 85) sc along shaped edge and 39 sc along bottom 18 cm of left front. Fasten off. Rejoin yarn, work chart rows 21 and 22 two times, working buttonhole on first WS row at base of right front neck shaping as foll: Ch 2, sk 2 dc. Fasten off. Armhole bands: With RS facing, work 1 rnd sc, 1 rnd dc around armhole edge. Turn work and with WS facing, work 1 rnd fpdc. Fasten off. Sew on button.



### CROCHET VEST

#### Chart



#### Chart key:

- = chain (ch)
- = single crochet (sc)
- ⋈ = double crochets (dc)
- ⋈ = fpdc: insert hook from front to back to front around post of st one row below, work dc as you would normally

## GAUGE SWATCH

Before you begin knitting...

...make a gauge swatch. Use the recommended needles, yarns and pattern stitch for your gauge swatch. It should measure approx. 12 cm x 12 cm. Cast on and bind off rows, as well as selvage stitches should not be included in the measurement. Pin your swatch and block it as you would the finished pieces of the garment. Count stitches and rows over 10 cm. If your gauge swatch is too small, switch to larger needles. If your gauge swatch is too big, switch to smaller needles.

## ABBREVIATIONS

**beg** = begin(ning) · **ch** = chain · **cont** = continue · **dec** = decreas(e)(ing) · **inc** = increas(e)(ing) · **k** = knit · **kwise** = as if to knit **meas** = measures · **M1L** = lift strand between sts from front to back and knit this strand through the back loop · **M1R** = lift strand between sts from the back and knit this strand through the front loop · **patn** = pattern · **pm** = place marker · **p** = purl · **pwise** = as if to purl · **rem** = remain(ing) · **rep** = repeat(s) · **rev St st** = reverse stockinette stitch · **rnd(s)** = round(s) · **RS** = right side · **sc** = single crochet · **skp** = slip 1 stitch as if to knit, knit 1 stitch, pass slipped stitch over knitted stitch · **sk2p** = slip 1 stitch as if to knit, knit 2 together, pass slipped stitch over knitted stitch · **s2kp** = slip 2 stitches as if to knit, k 1 stitch, pass slipped stitches over knitted stitch · **sl** = slip · **st(s)** = stitch(es) · **St st** = stockinette stitch · **tbl** = through the back loop · **tog** = together · **wyib** = with yarn in back of work · **wyif** = with yarn in front of work · **WS** = wrong side · **yo(s)** = yarn over(s)