



www.lanagrossa.com

JACKET • ALESSIA & SILKHAIR

Design 26 – Filati Journal 61

JACKET • ALESSIA & SILKHAIR

Design 26 – Filati Journal 61



Size 36 – 40 (42 – 46, 48/50)

Instructions are given for first size. Figures in parenthesis refer to larger sizes. When only one figure is given, it applies to all sizes.

Materials: **600 (650, 700) g** of Lana Grossa **Alessia** (76% cotton, 20% recycled polyester, 4% polyester; 135 m/50 g) in Charcoal/Grey/Natural (**col 5**) and **100 (125, 150) g** of Lana Grossa **Silkhair** (70% superkid mohair, 30% silk; 210 m/25 g) in Rosewood (**col 74**). Size 3.5 and 4 mm needles.

Selvage stitches: On every row: K first st, sl last st kwise.

Chart A/B, C/D, E/F: Numbers at left edge of charts indicate WS rows, numbers at right edge of charts indicate RS rows. Charts begin with a WS row. Work to patt rep, work 2 sts between arrows for patt rep, work to end of chart. Sts shown in grey are worked as two-stitch selvage. For **rib patt**, work rows 1 – 4 of chart A (C, E) once, then rep rows 2 and 3. For **half-brioche rib**, work rows 1 – 4 of chart B (D, F) once, then rep rows 3 and 4. **Note:** 1 stitch and 1 yo are treated as 1 stitch.

St st: K on RS, p on WS.

Color blocks: * Work 22 rows (6 cm) with 1 strand Alessia and 1 strand Silkhair held tog, then 26 rows (6 cm) with single strand Alessia. Rep from * throughout.

Full-fashion decrease: At beg of RS row, work first 2 sts, skp; at end of RS row, work to last 4 sts, k2tog, work rem 2 sts.

Gauge: 19 sts and 39.5 rows = 10 x 10 cm in half-brioche rib and color blocks on size 4 mm needles.

Back: With size 3.5 mm needles and Alessia cast on 105 (113, 121) sts. Beg and end with a WS row, work chart A for 13 rows and piece meas 3.5 cm from cast-on. Change to size 4 mm needles. Work chart B and work color blocks for 118 rows = 30 cm. Shape armholes: Bind off 4 sts at beg of next 2 rows. Working full-fashion dec, dec 1 st at each end of [every RS row 1 time, then every alt RS row 1 time] 3 times = 85 (93, 101) sts. Cont chart B until 80 (84, 88) rows have been worked from beg of armhole shaping and armhole meas 20 (21, 22) cm. Shape shoulders: At each shoulder edge bind off 4 sts 1 time, then 4 sts 1 time, 3 sts 8 times (then 4 sts 5 times, 3 sts 4 times / then 4 sts 9 times). Bind off rem 21 sts.

Pocket lining: Make 2. With size 4 mm needles and Alessia cast on 29 sts. Work in St st for 11 cm, ending with a WS row. Place sts on holder, cut yarn.

Left front: With size 3.5 mm needles and Alessia cast on 56 (60, 64) sts. Beg and end with a WS row, work chart C for 13 rows and piece meas 3.5 cm from cast-on. Change to size 4 mm needles. Work chart D and work color blocks for 48 rows = 12 cm. Work pocket: Next row (RS): Patt over first 6 (10, 14) sts; work rib patt chart A over next 29 sts, patt to end. Next row (WS): Patt over first 21 sts, work rib patt as established over next 29 sts, patt to end. Next row (RS): Patt over first 6 (10, 14) sts; with single strand Alessia only, work rib patt as established over next 29 sts, patt to end. Work in patt as set by last row for another 8 rows, ending with a RS row. Next row (WS): Patt over first 21 sts, bind off next 29 sts, patt to end. Next row (RS): Patt over first 6 (10, 14) sts; work 29 sts of lining into patt, patt to end. Cont chart D and color blocks across all sts until same length as back to armhole. Shape armhole at right edge same as for back = 46 (50, 54) sts. Work even until same length as back to shoulder. Shape shoulder at right edge same as for back = 14 sts rem for front band. Cont in patt across front band sts for 6 cm. Bind off all sts.

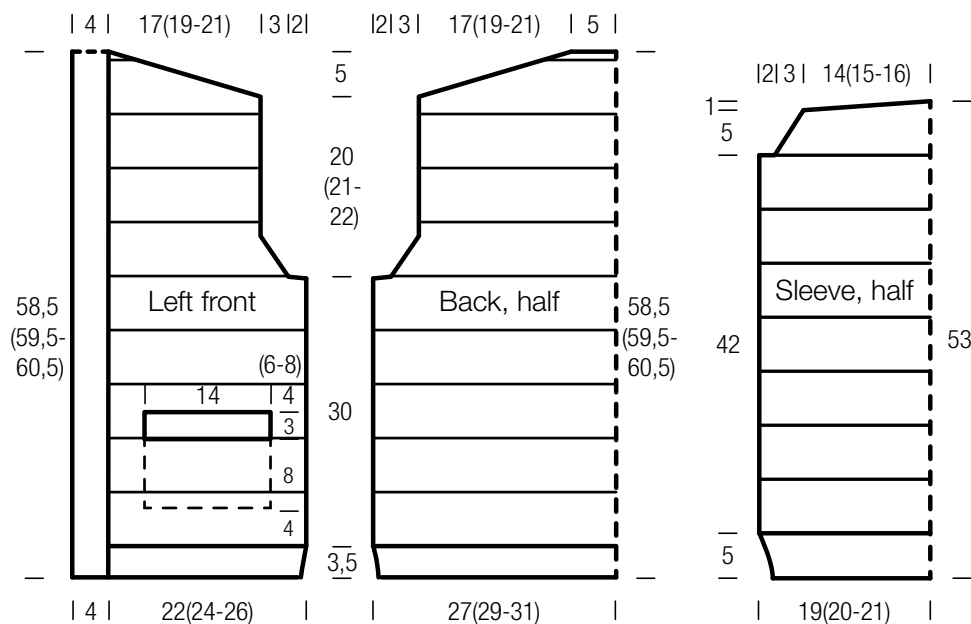
Right front: Work same as left front, reversing all shaping and work chart E/F.

Sleeves: With size 3.5 mm needles and Alessia cast on 75 (79, 83) sts. Beg and end with a WS row, work chart A for 17 rows and piece meas 5 cm from cast-on. Change to size 4 mm needles. Work chart B and work color blocks for 166 rows = 42 cm. Shape sleeve cap: Bind off 4 sts at beg of next 2 rows. Working full-fashion dec, dec 1 st at each end of [every RS row 1 time, then every alt RS row 1 time] 3 times. Work 1 WS row. Bind off 7 sts at beg of next 6 rows. Bind off rem 13 (17, 21) sts.

Finishing: Pin pieces to measurements and block. Sew shoulder seams. Sew bound-off edges of neckbands tog, then sew neckband to back neck edge. Sew in sleeves. Sew side and sleeve seams.

JACKET • ALESSIA & SILKHAIR

Design 01 – Filati Journal 61



Charts A/B, C/D, E/F

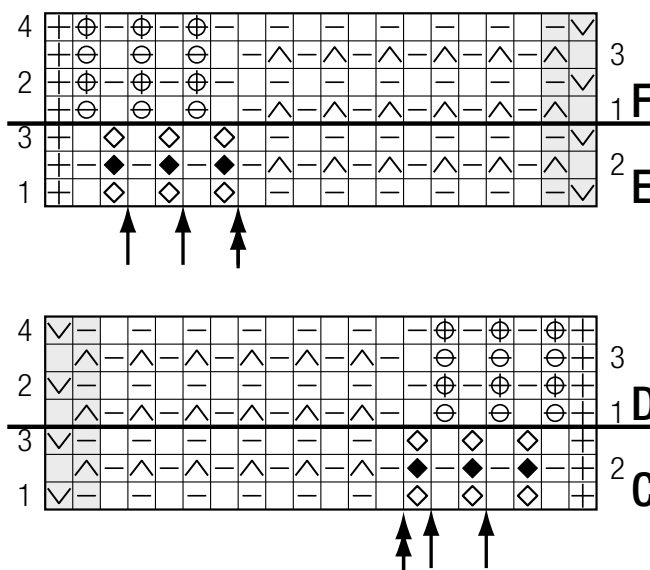


Chart key:

- ⊕ = selvage st
- = k1
- ▢ = p1
- ◆ = k1tbl
- ◇ = p1tbl
- ⊞ = sl 1 pwise wyif
- ⊡ = sl 1 pwise wyib
- ⊗ = make a yo, then sl next st pwise
- ⊕ = ktog slipped st with its yo

Gauge Swatch

Before you begin ...

...make a gauge swatch. Use the recommended needles, yarns and pattern stitch for your gauge swatch. It should measure approx. 12 cm x 12 cm. Cast-on and bind-off rows, as well as selvage stitches should not be included in the measurement. Pin your swatch and block it as you would the finished pieces of the garment. Count stitches and rows over 10 cm. If your gauge swatch is too small, switch to larger needles. If your gauge swatch is too big, switch to smaller needles.



Abbreviations

beg = begin(ning) · **ch** = chain · **cont** = continue · **dec** = decreas(e)(ing) · **inc** = increas(e)(ing) · **k** = knit · **kwise** = as if to knit
meas = measures · **M1L** = lift strand between sts from front to back and knit this strand through the back loop · **M1R** = lift strand between sts from the back and knit this strand through the front loop · **patt** = pattern · **pm** = place marker · **p** = purl
pwise = as if to purl · **rem** = remain(ing) · **rep** = repeat(s) · **rev St st** = reverse stockinette stitch · **rnd(s)** = round(s) · **RS** = right side · **sc** = single crochet · **skp** = slip 1 stitch as if to knit, knit 1 stitch, pass slipped stitch over knitted stitch · **sk2p** = slip 1 stitch as if to knit, knit 2 together, pass slipped stitch over knitted stitch · **s2kp** = slip 2 stitches as if to knit, k 1 stitch, pass slipped stitches over knitted stitch · **sl** = slip · **st(s)** = stitch(es) · **St st** = stockinette stitch · **tbl** = through the back loop · **tog** = together · **wyib** = with yarn in back of work · **wyif** = with yarn in front of work · **WS** = wrong side · **yo(s)** = yarn over(s)

Publisher's Info

Publisher: Lana Grossa GmbH, Gaimersheim, www.lanagrossa.com
Photographer: Nicolas Olonetzky, www.olonetzky.com