



[www.lanagrossa.com](http://www.lanagrossa.com)

# CARDIGAN • TROPICO

Design 34 – Filati Journal 61

# CARDIGAN • TROPICO

## Design 34 – Filati Journal 61



**Size** 36 – 42 (44 – 48)

Instructions are given for smaller size. Figure in parenthesis refers to larger size. When only one figure is given, it applies to both sizes.

**Materials:** 650 (700) g of Lana Grossa **Tropico** (70% cotton, 30% Merino wool; 125 m/50 g) in Rust/Ecru/Mint/Pale Purple/Salmon (**col 12**). Size 4.5 and 5 mm needles; size 4.5 mm circular needle, 80 cm long.

**Selvage stitches:** On every row: Sl first st kwise, k last st.

**Garter st:** K every row.

**St st:** K on RS, p on WS.

**Charts A and B:** Number(s) at right edge of charts indicate RS row(s), number(s) at left edge of charts indicate WS row(s). Work to patt rep, work 4 sts between arrows for patt rep, work to end of chart.

**Full-fashion increase:** On RS row: M1R, 2 sts in from edge.

**Gauge:** 18 sts and 23 rows = 10 x 10 cm in St st on size 5 mm needles.

**Back:** With size 4.5 mm needles cast on 118 (126) sts. Beg and end with a WS row and working first and last st as selvage sts, work in garter st for 9 rows and piece meas 3 cm from cast-on. Change to size 5 mm needles. Maintaining selvage sts, work in St st for 6 rows. Work rows 1 and 2 of chart A. Cont in St st for 132 (128) rows and piece meas 61 (59) cm from end of garter st. Place marker in first and last st on last WS row to indicate beg of armholes. Cont in St st for 38 (42) rows and piece meas 17 (19) cm from armhole markers. Shape neck: Next row (RS): Bind off center 28 sts. Working each side separately, bind off 3 sts at each neck edge 1 time, 2 sts 1 time, 1 st 1 time and when piece meas 4 cm from beg of neck shaping, bind off rem 39 (43) sts for each shoulder.

**Left front:** With size 4.5 mm needles cast on 59 (63) sts. Beg and end with a WS row and working first and last st as selvage sts, work in garter st for 9 rows and piece meas 3 cm from cast-on. Change to size 5 mm needles. Next row (RS): Selvage st, work in St st to last 6 sts, work next 5 sts in garter st as established, selvage st. Work in patt as set by last row for a total of 6 rows. Repeating rows 1 – 4, work chart B for 134 (130) rows and piece meas 61 (59) cm from end of garter st. Place marker in last st on last WS row to indicate beg of armhole. Cont chart B for 31 (35) rows and piece meas 14 (16) cm from armhole markers. Shape neck: At beg of WS rows, bind off 8 sts 1 time, 4 sts 1 time, 3 sts 1 time, 2 sts 1 time, 1 st 3 times and when same length as back to shoulder, bind off rem 39 (43) shoulder sts.

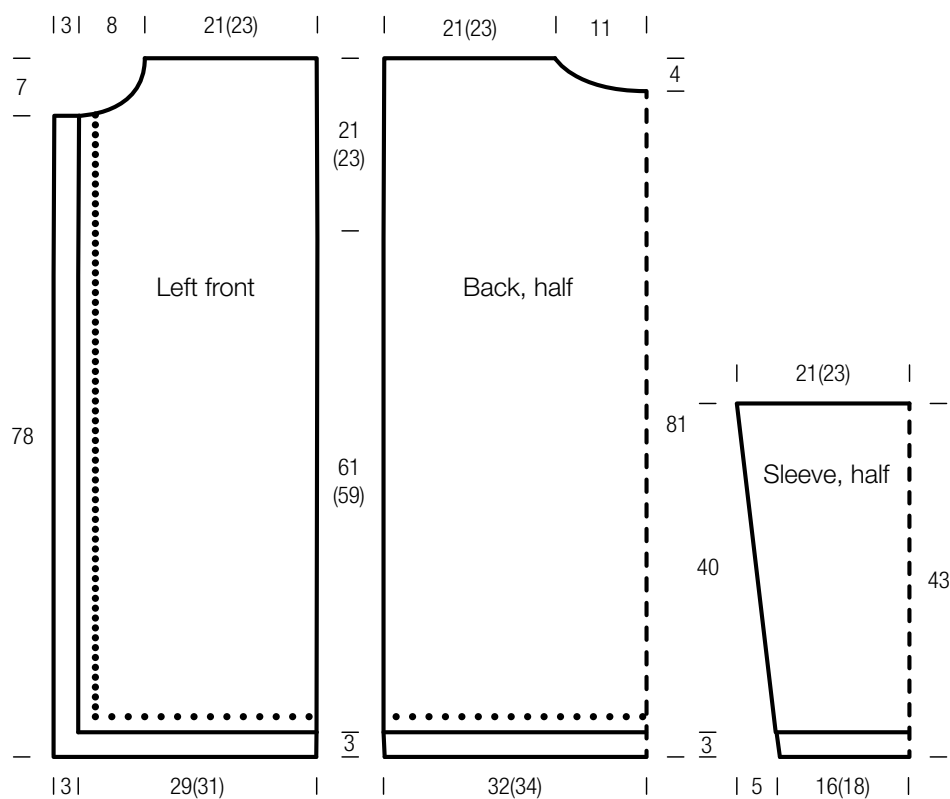
**Right front:** Work same as left front, reversing all shaping and patt placement.

**Sleeves:** With size 4.5 mm needles cast on 60 (68) sts. Beg and end with a WS row and working first and last st as selvage sts, work in garter st for 9 rows and piece meas 3 cm from cast-on. Change to size 5 mm needles. Maintaining selvage sts, work in St st and shape sleeve as foll: Working full-fashion inc, inc 1 st at each end of 5th row, then every 10th row 8 times = 78 (86) sts. Work even until 92 rows = 40 cm have been worked from end of garter st. Bind off all sts.

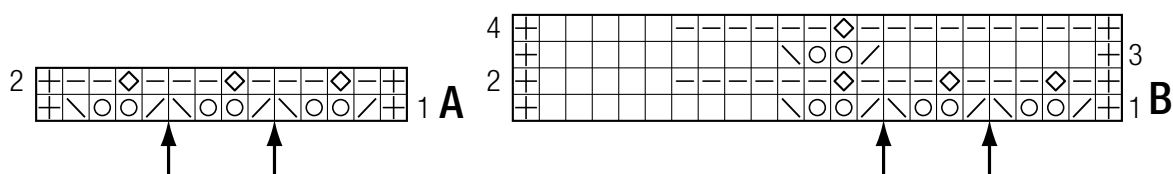
**Finishing:** Pin pieces to measurements and block. Sew shoulder seams. **Neckband:** With size 4.5 mm circular needle, pick up and k 105 sts evenly along right front, back and left front neck edge. Beg and end with a WS row, work in garter st for 9 rows = 3 cm. Bind off all sts. Sew on sleeves between markers. Sew side and sleeve seams.

# CARDIGAN • TROPICO

## Design 34 – Filati Journal 61



### Charts A and B



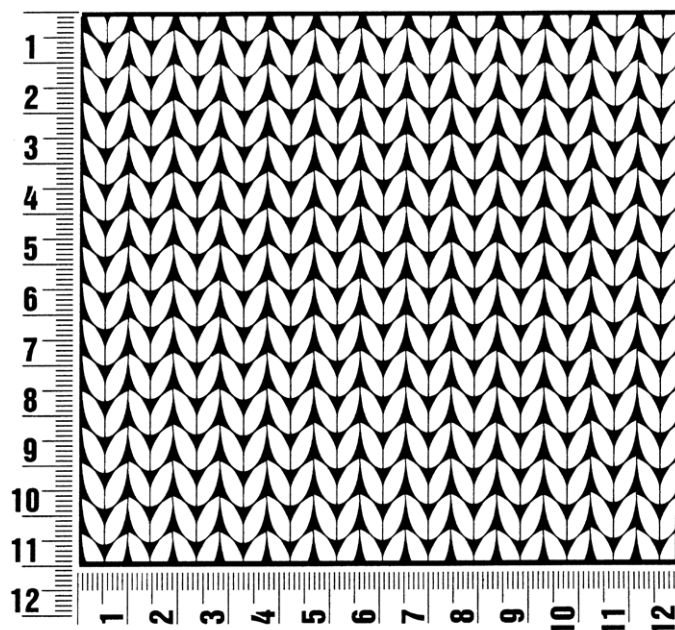
#### Chart key:

- ⊕ = selvage st
- = k1
- ▢ = p1
- ◊ = p1tbl
- = yo
- ▧ = k2tog
- ▨ = skp: sl 1 kwise, k1, pass slipped st over knitted st

## Gauge Swatch

### Before you begin ...

...make a gauge swatch. Use the recommended needles, yarns and pattern stitch for your gauge swatch. It should measure approx. 12 cm x 12 cm. Cast-on and bind-off rows, as well as selvage stitches should not be included in the measurement. Pin your swatch and block it as you would the finished pieces of the garment. Count stitches and rows over 10 cm. If your gauge swatch is too small, switch to larger needles. If your gauge swatch is too big, switch to smaller needles.



## Abbreviations

**beg** = begin(ning) · **ch** = chain · **cont** = continue · **dec** = decreas(e)(ing) · **inc** = increas(e)(ing) · **k** = knit · **kwise** = as if to knit  
**meas** = measures · **M1L** = lift strand between sts from front to back and knit this strand through the back loop · **M1R** = lift strand between sts from the back and knit this strand through the front loop · **patt** = pattern · **pm** = place marker · **p** = purl  
**pwise** = as if to purl · **rem** = remain(ing) · **rep** = repeat(s) · **rev St st** = reverse stockinette stitch · **rnd(s)** = round(s) · **RS** = right side · **sc** = single crochet · **skp** = slip 1 stitch as if to knit, knit 1 stitch, pass slipped stitch over knitted stitch · **sk2p** = slip 1 stitch as if to knit, knit 2 together, pass slipped stitch over knitted stitch · **s2kp** = slip 2 stitches as if to knit, k 1 stitch, pass slipped stitches over knitted stitch · **sl** = slip · **st(s)** = stitch(es) · **St st** = stockinette stitch · **tbl** = through the back loop · **tog** = together · **wyib** = with yarn in back of work · **wyif** = with yarn in front of work · **WS** = wrong side · **yo(s)** = yarn over(s)

### Publisher's Info

**Publisher:** Lana Grossa GmbH, Gaimersheim, [www.lanagrossa.com](http://www.lanagrossa.com)

**Photographer:** Nicolas Olonetzky, [www.olonetzky.com](http://www.olonetzky.com)