



[www.lanagrossa.com](http://www.lanagrossa.com)

# SHRUG • ABOUT BERLIN VANITY

Design 36 – Filati Journal 61

# SHRUG • ABOUT BERLIN VANITY

## Design 36 – Filati Journal 61



**Size** One size

**Materials:** 450 g of Lana Grossa **About Berlin Vanity** (54% cotton, 21% viscose, 13% silk, 12% polyamide; 130 m/50 g) in Petrol/Curry/Grey Green/Natural variegated (**col 9**). Size 4 and 4.5 mm circular needles, each 80 and 120 cm long.

**Chart A/B:** Numbers at left edge of chart indicate WS rows, numbers at right edge of chart indicate RS rows. Chart begins with a WS row. Work to patt rep, work 3 sts between arrows for patt rep, work to end of chart. For **rib patt**, work rows 1 – 3 of chart A once, then rep rows 2 and 3; for **mesh lace**, rep rows 1 and 2 of chart B.

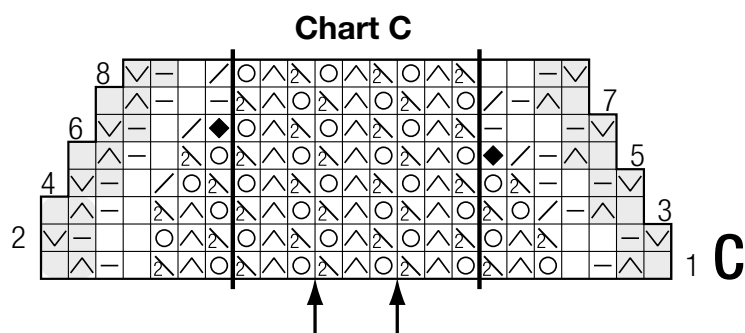
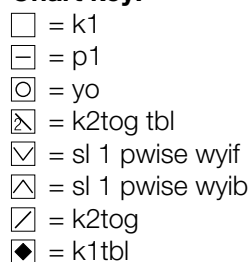
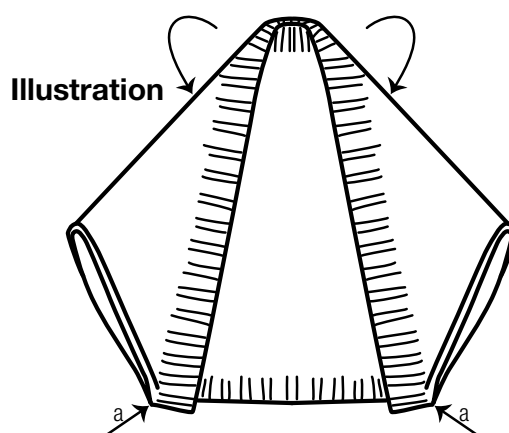
**Chart C:** Numbers at right edge of chart indicate RS rows, numbers at left edge of chart indicate WS rows. Work to patt rep, work 3 sts between arrows for patt rep, work to end of chart. Follow chart C for shaping.

**Gauge:** 24 sts and 32.5 rows = 10 x 10 cm in mesh lace chart B on size 4.5 mm needles.

**Shrug:** Worked from the top down. Arrow on schematic shows direction of work. With longer size 4 mm circular needle cast on 365 sts. Beg and end with a WS row work chart A for 21 rows and piece meas 7 cm from cast-on. Change to longer size 4.5 mm circular needle. Work chart C and work decs as shown on chart and as foll: Dec 1 st [k2tog] at beg of row 3, then at beg of every foll row until 161 sts rem. Change to shorter size 4.5 mm circular needle as stitch count decreases. Work chart A for 14 rows = 5 cm. Bind off all sts and at same time, k2tog each purl st with foll knit st.

**Finishing:** Pin piece to measurements and block, omitting ribbing. Fold top corners down as shown by arrow at right edge of schematic and illustration. Sew seams over 5 cm to form arm openings.

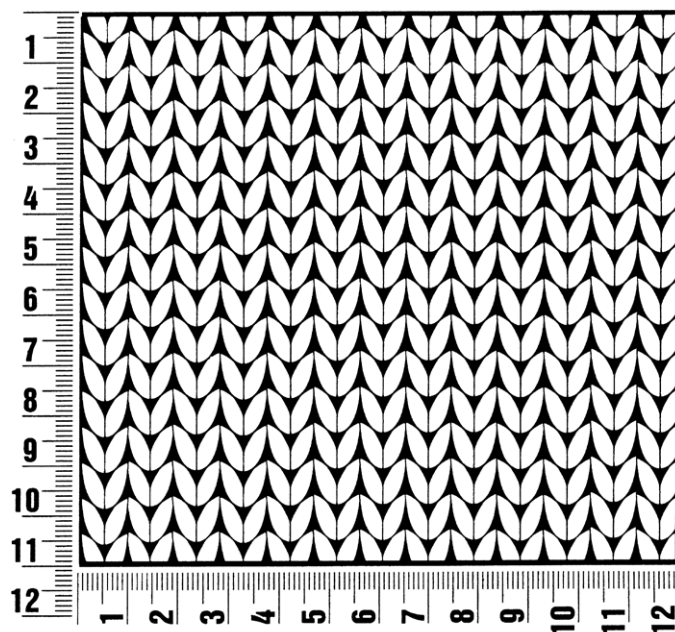
# Design 36 – Filati Journal 61



## Gauge Swatch

### Before you begin ...

...make a gauge swatch. Use the recommended needles, yarns and pattern stitch for your gauge swatch. It should measure approx. 12 cm x 12 cm. Cast-on and bind-off rows, as well as selvage stitches should not be included in the measurement. Pin your swatch and block it as you would the finished pieces of the garment. Count stitches and rows over 10 cm. If your gauge swatch is too small, switch to larger needles. If your gauge swatch is too big, switch to smaller needles.



## Abbreviations

**beg** = begin(ning) · **ch** = chain · **cont** = continue · **dec** = decreas(e)(ing) · **inc** = increas(e)(ing) · **k** = knit · **kwise** = as if to knit  
**meas** = measures · **M1L** = lift strand between sts from front to back and knit this strand through the back loop · **M1R** = lift strand between sts from the back and knit this strand through the front loop · **patt** = pattern · **pm** = place marker · **p** = purl  
**pwise** = as if to purl · **rem** = remain(ing) · **rep** = repeat(s) · **rev St st** = reverse stockinette stitch · **rnd(s)** = round(s) · **RS** = right side · **sc** = single crochet · **skp** = slip 1 stitch as if to knit, knit 1 stitch, pass slipped stitch over knitted stitch · **sk2p** = slip 1 stitch as if to knit, knit 2 together, pass slipped stitch over knitted stitch · **s2kp** = slip 2 stitches as if to knit, k 1 stitch, pass slipped stitches over knitted stitch · **sl** = slip · **st(s)** = stitch(es) · **St st** = stockinette stitch · **tbl** = through the back loop · **tog** = together · **wyib** = with yarn in back of work · **wyif** = with yarn in front of work · **WS** = wrong side · **yo(s)** = yarn over(s)

### Publisher's Info

**Publisher:** Lana Grossa GmbH, Gaimersheim, [www.lanagrossa.com](http://www.lanagrossa.com)  
**Photographer:** Nicolas Olonetzky, [www.olonetzky.com](http://www.olonetzky.com)