



[www.lanagrossa.com](http://www.lanagrossa.com)

## **PULLOVER • RISERVA**

Design 42 – Filati Journal 61



# PULLOVER • RISERVA

## Design 42 – Filati Journal 61



**Size** 36/38 (42/44)

Instructions are given for smaller size. Figure in parenthesis refers to larger size. When only one figure is given, it applies to both sizes.

**Materials:** 500 (550) g of Lana Grossa **Riserva** (70% organic cotton, 30% recycled polyamide; 125 m/50 g) in Ecru (**col 2**). Size 5.5 and 6.5 mm needles; size 5.5 mm circular needle, 50 cm long; size 4 mm crochet hook.

**Selvage stitches:** On every row: Sl first st kwise, k last st.

**Rib patt:** K2, p2.

**St st:** K on RS, p on WS.

**Main pattern:** Work according to chart A. Numbers at right edge of chart indicate RS rows, numbers at left edge of chart indicate WS rows. On all WS rows not shown on chart, purl all sts and yos or work according to chart key. Work to patt rep, work 14 sts between arrows for patt rep, work to end of chart. Work rows 1 – 66 once, then rep rows 11 – 66.

**Neckband:** Work according to chart B. Numbers at right edge of chart indicate rnds. Work all rnds from right to left. Work patt rep between arrows around. Chart shows 3 patt reps. Work rnds 1 – 13 once.

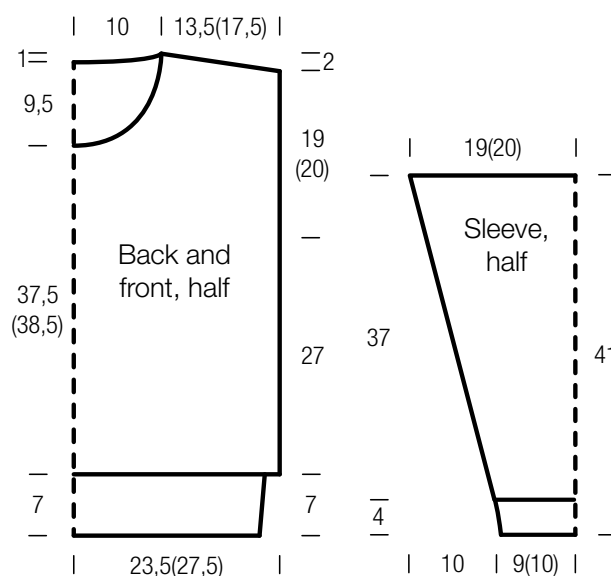
**Gauge:** 18 sts and 33 rows = 10 x 10 cm in main patt on size 6.5 mm needles.

**Back:** With size 5.5 mm needles cast on 78 (94) sts. Next row (WS): Selvage st, p1, \* k2, p2; rep from \* to last 4 sts, k2, p1, selvage st. Work in rib patt as set by last row for a total of 23 rows and piece meas 7 cm from cast-on, increasing 9 (7) sts evenly across last WS row = 87 (101) sts. Change to size 6.5 mm needles. Work chart A for 90 rows = 27 cm. Place marker in first and last st on last WS row to indicate beg of armholes. Cont to foll chart A for 64 (66) rows and piece meas 19 (20) cm from armhole markers. Shape shoulders and neck: Work in St st across all sts and at each shoulder edge, bind off 9 (10) sts 1 time, 8 (11) sts 2 times. **At same time**, on 2nd RS shoulder bind-off row, shape neck as foll: Bind off center 33 sts. Working each side separately, bind off 2 sts at each neck edge 1 time. No sts rem.

**Front:** Work same as back until 34 (36) rows = 10.5 (11.5) cm have been worked from armhole markers. Shape neck: Next row (RS): Bind off center 11 sts. Working each side separately, bind off 4 sts at each neck edge 1 time, 3 sts 1 time, 2 sts 1 time, 1 st every 4th row 3 times, 1 st every 6th row 1 time and when same length as back to shoulders, shape shoulders same as for back. No sts rem.

**Sleeves:** With size 5.5 mm needles cast on 34 (38) sts. Next row (WS): Selvage st, p1, \* k2, p2; rep from \* to last 4 sts, k2, p1, selvage st. Work in rib patt as set by last row for a total of 13 rows and piece meas 4 cm from cast-on, increasing 1 st at end of last WS row = 35 (39) sts. Change to size 6.5 mm needles. With patt centered over sleeve [see dbl arrow at bottom edge of chart], work chart A and shape sleeve as foll: Inc 1 st at each end of chart row 7, then every 6th row 17 times = 71 (75) sts. Work increased sts into main patt. Work even until 122 rows = 37 cm have been worked from end of rib patt. Loosely bind off all sts.

**Finishing:** Pin pieces to measurements and block. Sew shoulder seams. **Neckband:** With size 4 mm crochet hook, work 1 rnd of 104 sc around neck edge. Fasten off. With size 5.5 mm circular needle and RS facing, pick up and k 1 st in each sc = 104 sts. Place beg of rnd marker and join for working in rnds. Work rnds 1 – 13 of chart B. Bind off all sts, ptog slipped st with its yo(s). Sew on sleeves between markers. Sew side and sleeve seams.

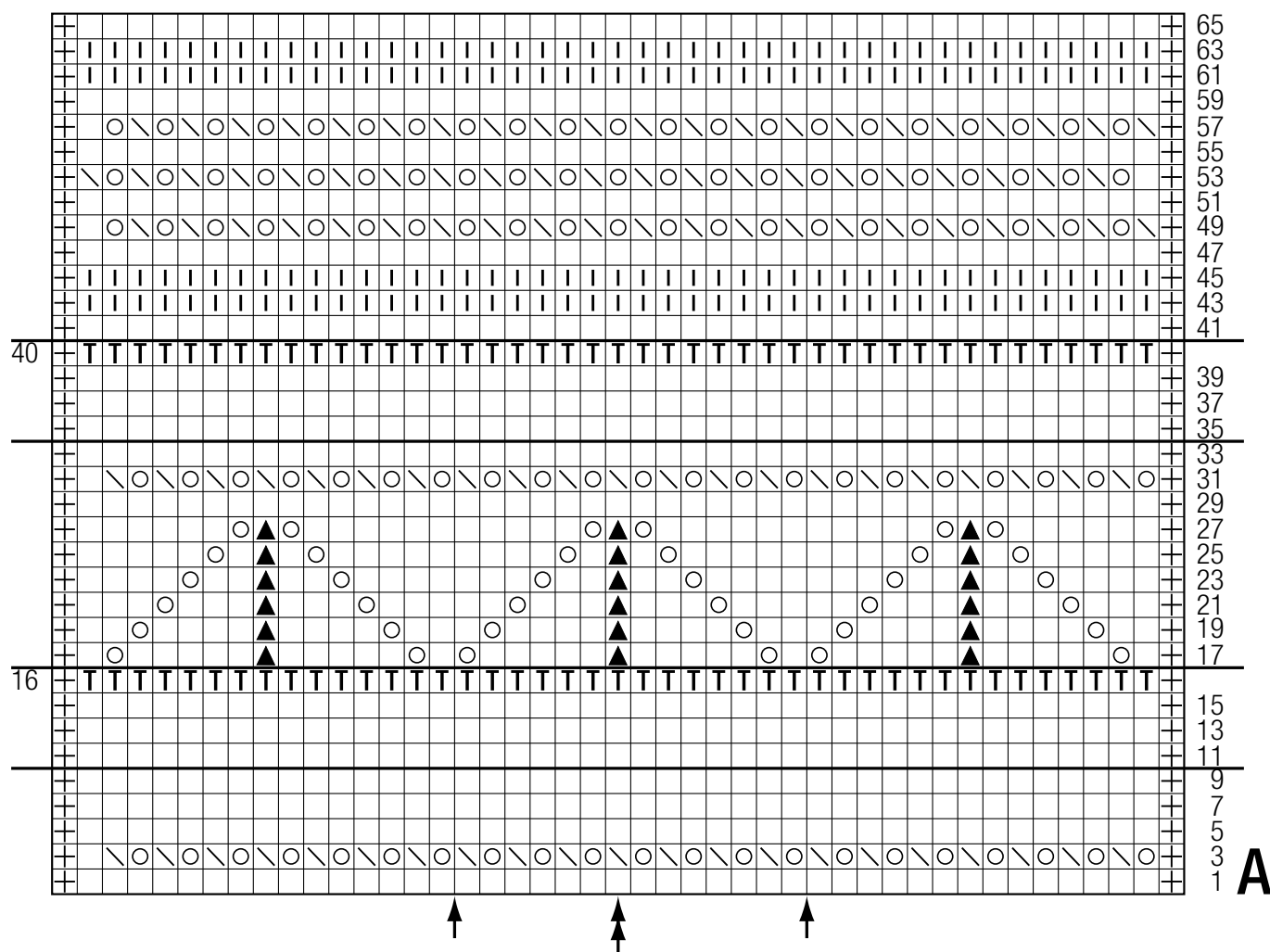
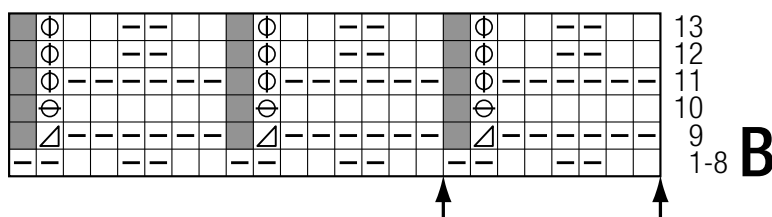


# PULLOVER • RISERVA

## Design 42 – Filati Journal 61



Charts A and B



### Chart key:

- ⊞ = selvage st
- = k1
- ▢ = p1
- = yo
- ▧ = p2tog
- ▨ = skp: sl 1 kwise, k1, pass slipped st over knitted st
- ▲ = s2kp: sl 2 kwise, k1, pass slipped sts over knitted st
- ⌈ = k1 on RS and WS
- ⌈ = insert right needle in horizontal strand at center of st 5 rows below and place picked-up strand on left needle; p2tog tbl picked-up strand and first st on left needle
- ⊗ = make a yo, then sl next st pwise
- ⊕ = make a yo, then sl next st with its yo(s) pwise
- = represents "no stitch" (included to keep st count correct)

## Gauge Swatch

### Before you begin ...

...make a gauge swatch. Use the recommended needles, yarns and pattern stitch for your gauge swatch. It should measure approx. 12 cm x 12 cm. Cast-on and bind-off rows, as well as selvage stitches should not be included in the measurement. Pin your swatch and block it as you would the finished pieces of the garment. Count stitches and rows over 10 cm. If your gauge swatch is too small, switch to larger needles. If your gauge swatch is too big, switch to smaller needles.



## Abbreviations

**beg** = begin(ning) · **ch** = chain · **cont** = continue · **dec** = decreas(e)(ing) · **inc** = increas(e)(ing) · **k** = knit · **kwise** = as if to knit  
**meas** = measures · **M1L** = lift strand between sts from front to back and knit this strand through the back loop · **M1R** = lift strand between sts from the back and knit this strand through the front loop · **patt** = pattern · **pm** = place marker · **p** = purl  
**pwise** = as if to purl · **rem** = remain(ing) · **rep** = repeat(s) · **rev St st** = reverse stockinette stitch · **rnd(s)** = round(s) · **RS** = right side · **sc** = single crochet · **skp** = slip 1 stitch as if to knit, knit 1 stitch, pass slipped stitch over knitted stitch · **sk2p** = slip 1 stitch as if to knit, knit 2 together, pass slipped stitch over knitted stitch · **s2kp** = slip 2 stitches as if to knit, k 1 stitch, pass slipped stitches over knitted stitch · **sl** = slip · **st(s)** = stitch(es) · **St st** = stockinette stitch · **tbl** = through the back loop · **tog** = together · **wyib** = with yarn in back of work · **wyif** = with yarn in front of work · **WS** = wrong side · **yo(s)** = yarn over(s)

### Publisher's Info

**Publisher:** Lana Grossa GmbH, Gaimersheim, [www.lanagrossa.com](http://www.lanagrossa.com)

**Photographer:** Nicolas Olonetzky, [www.olonetzky.com](http://www.olonetzky.com)