



www.lanagrossa.com

CROCHET TOP · PIMA & BRIGITTE NO. 4

Design 07 – About Berlin 09

CROCHET TOP .

PIMA & BRIGITTE NO. 4

Design 07 – About Berlin 09



Size One size

Materials: 200 g of Lana Grossa **Pima** (100% Pima cotton; 125 m/50 g) in Ecu (col 22); 50 g each of Lana Grossa **Brigitte No. 4** (80% cotton, 20% baby alpaca; 110 m/50 g) in Salmon (col 5), Sand (col 3), Red Violet (col 24), Grey Blue (col 17), Green (col 12) and Grey Purple (col 8). Size 4 mm crochet hook; size 3.5 mm circular needles, 50 and 80 cm long; tapestry needle.

Rib patt: K1, p1.

Squares: Work according to chart. For each square, work rnds 1 – 5 once. Numbers on chart indicate rnds. Beg square with ch 5, sl st in first ch to form ring. Work first rnd into ring. Join all rnds with sl st, beg all rnds with sl st. Fasten off after rnd 5. Work color combinations as given in instructions. To change color, work to last yarn over in old color, pick up new color and complete st with new color. Crochet ends in as you go.

Square 1 [make 2]: Foundation row + rnds 1 and 2 grey purple; rnd 3 ecru; rnd 4 sand; rnd 5 ecru.

Square 2 [make 2]: Foundation row + rnd 1 ecru; rnds 2 and 3 grey blue; rnd 4 salmon; rnd 5 ecru.

Square 3 [make 2]: Foundation row + rnd 1 salmon; rnd 2 green; rnds 3 and 4 sand; rnd 5 ecru.

Square 4 [make 2]: Foundation row + rnds 1 and 2 green; rnd 3 ecru; rnd 4 red violet; rnd 5 ecru.

Square 5 [make 2]: Foundation row + rnd 1 green; rnds 2 and 3 grey blue; rnd 4 sand; rnd 5 ecru.

Square 6 [make 2]: Foundation row + rnds 1 and 2 ecru; rnd 3 green; rnd 4 red violet; rnd 5 ecru.

Square 7 [make 2]: Foundation row + rnd 1 red violet; rnds 2 and 3 ecru; rnd 4 grey purple; rnd 5 ecru.

Square 8 [make 2]: Foundation row + rnds 1 and 2 ecru; rnd 3 grey blue; rnd 4 salmon; rnd 5 ecru.

Square 9 [make 2]: Foundation row + rnd 1 sand; rnds 2 and 3 salmon; rnds 4 and 5 ecru.

Square 10 [make 1]: Foundation row + rnd 1 grey purple; rnd 2 ecru; rnds 3 and 4 sand; rnd 5 ecru.

Square 11 [make 2]: Foundation row + rnds 1 and 2 ecru; rnd 3 red violet; rnd 4 salmon; rnd 5 ecru.

Square 12 [make 2]: Foundation row + rnd 1 ecru; rnd 2 salmon; rnd 3 red violet; rnds 4 and 5 ecru.

Square 13 [make 1]: Foundation row + rnds 1 and 2 grey blue; rnd 3 green; rnd 4 red violet; rnd 5 ecru.

Square 14 [make 2]: Foundation row + rnd 1 salmon; rnd 2 ecru; rnd 3 grey purple; rnds 4 and 5 ecru.

Gauge: Square meas 10.5 x 10.5.

Back and front: Work squares 1 – 14 as many times as given in instructions above.

Finishing: Pin squares to measurements and block. Referring to schematics, arrange squares for back and front. Using Ecu, whipstitch squares tog, inserting tapestry needle in back loop of sts only. Sew shoulder and side seams. **Bottom ribbing:** With Ecu, sc around bottom edge of top, 23 sc along each square = 184 sc total. Fasten off. With longer size 3.5 mm circular needle, Ecu and RS facing, pick up and k 1 st in each sc = 184 sts. Place beg of rnd marker and join for working in rnds. Work rib patt in rnds for 17 rnds = 5 cm. Bind off all sts in rib. **Armhole ribbing:** Join Ecu with sl st in underarm seam, 3 sc, 1 hdc, 5 dc [center dc in corner], 1 hdc, 34 sc to shoulder, 34 sc to corner, 1 hdc, 5 dc [center dc in corner], 1 hdc, 3 sc. Fasten off. With shorter size 3.5 mm circular needle, Ecu and RS facing, pick up and k 1 st in each st = 88 sts. Place beg of rnd marker and join for working in rnds. Work rib patt in rnds for 10 rnds = 3 cm. Bind off all sts in rib.

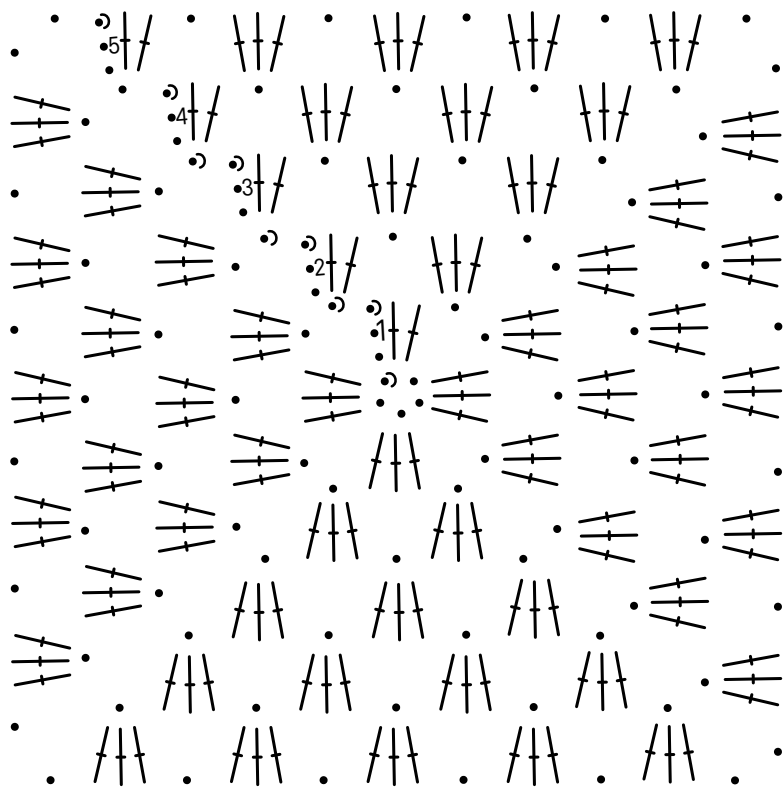
CROCHET TOP .

PIMA & BRIGITTE NO. 4

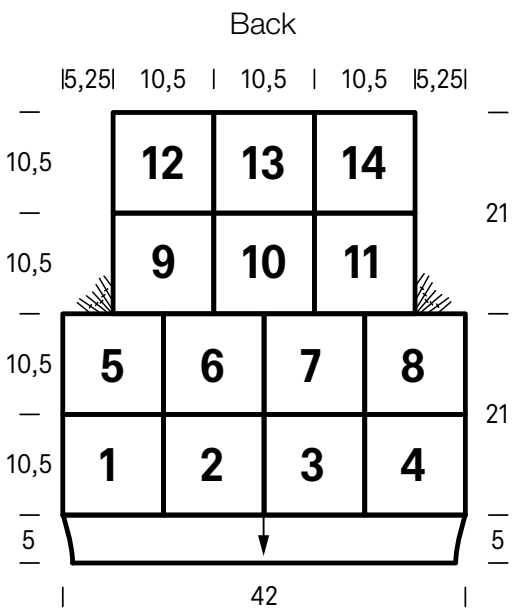
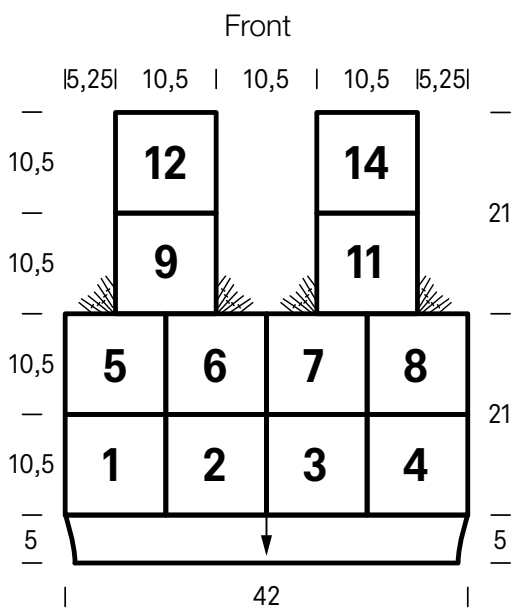
Design 07 – About Berlin 09



Chart



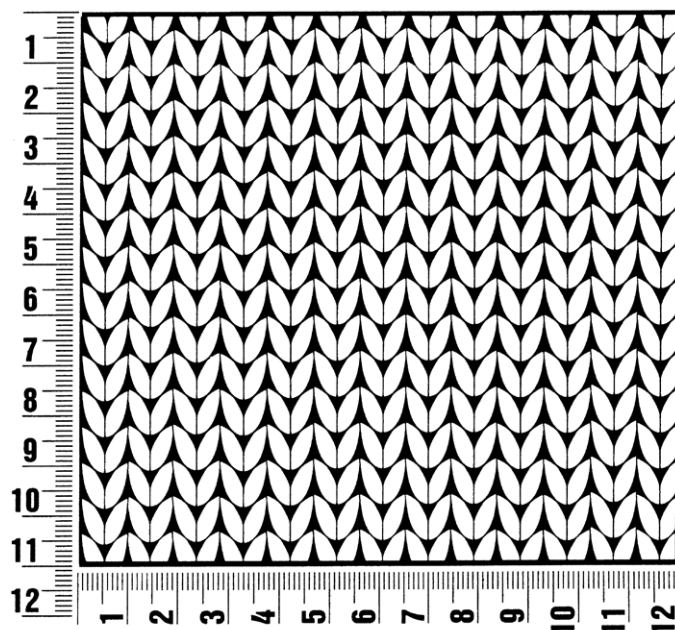
- Chart key:**
- = chain (ch)
 - ⤿ = slip stitch (sl st)
 - ↑ = double crochet (dc)



Gauge Swatch

Before you begin ...

...make a gauge swatch. Use the recommended needles, yarns and pattern stitch for your gauge swatch. It should measure approx. 12 cm x 12 cm. Cast-on and bind-off rows, as well as selvage stitches should not be included in the measurement. Pin your swatch and block it as you would the finished pieces of the garment. Count stitches and rows over 10 cm. If your gauge swatch is too small, switch to larger needles. If your gauge swatch is too big, switch to smaller needles.



Abbreviations

beg = begin(ning) · **ch** = chain · **cont** = continue · **dec** = decreas(e)(ing) · **inc** = increas(e)(ing) · **k** = knit · **kwise** = as if to knit
meas = measures · **M1L** = lift strand between sts from front to back and knit this strand through the back loop · **M1R** = lift strand between sts from the back and knit this strand through the front loop · **patt** = pattern · **pm** = place marker · **p** = purl
pwise = as if to purl · **rem** = remain(ing) · **rep** = repeat(s) · **rev St st** = reverse stockinette stitch · **rnd(s)** = round(s) · **RS** = right side · **sc** = single crochet · **skp** = slip 1 stitch as if to knit, knit 1 stitch, pass slipped stitch over knitted stitch · **sk2p** = slip 1 stitch as if to knit, knit 2 together, pass slipped stitch over knitted stitch · **s2kp** = slip 2 stitches as if to knit, k 1 stitch, pass slipped stitches over knitted stitch · **sl** = slip · **st(s)** = stitch(es) · **St st** = stockinette stitch · **tbl** = through the back loop · **tog** = together · **wyib** = with yarn in back of work · **wyif** = with yarn in front of work · **WS** = wrong side · **yo(s)** = yarn over(s)

Publisher's Info

Publisher: Lana Grossa GmbH, Gaimersheim, www.lanagrossa.com

Photographer: Yannick Schütte