



www.lanagrossa.com

**CROCHET TOP .
FOURSEASON, BRIGITTE NO. 4,
PER FORTUNA & ABOUT BERLIN FUNKY**
Design 11 – About Berlin 09

CROCHET TOP · FOURSEASON, BRIGITTE NO. 4, PER FORTUNA & ABOUT BERLIN FUNKY

Design 11 – About Berlin 09



Size 36/38 (40/42)

Instructions are given for smaller size. Figure in parenthesis refers to larger size. When only one figure is given, it applies to both sizes.

Materials: 50 g of Lana Grossa **Fourseason** (45% superfine organic Merino wool, 40% organic cotton, 15% recycled cashmere; 105 m/50 g) in Light Blue (**col 1**); 100 g each of Lana Grossa **Brigitte No. 4** (80% cotton, 20% baby alpaca; 110 m/50 g) in Pale Purple (**col 7**) and Off White (**col 1**); 50 (100) g of Lana Grossa **Per Fortuna** (74% organic cotton, 26% polyamide; 190 m/50 g) in Pink (**col 3**); 100 (150) g of Lana Grossa **About Berlin Funky** (83% cotton, 17% polyamide; 115 m/50 g) in Cream (**col 2**) and 50 g each in Pink (**col 17**) and Orange (**col 15**). Size 4 and 4.5 mm crochet hook.

Chart A/B/C: Numbers at left edge of chart indicate WS rows, numbers at right edge of chart indicate RS rows. Chart begins with a WS row. Work first sc on first row in 2nd ch from hook. Work to patt rep, work st(s) shown in grey for patt rep, work to end of chart. To change color, work to last yarn over in old color, pick up new color and complete st with new color.

Decreasing several sts: At beg of row, skip the number of sts given in pattern and work sl st instead; at end of row, leave the number of sts given in pattern unworked.

Gauges: 13.5 dc and 6 rows = 10 x 7 cm with size 4 mm hook and About Berlin Funky; 6 patt reps = 18 sts and 4 rows = 9 x 4 cm in dc V-st patt with size 4.5 mm hook and Brigitte No. 4; 16 sts and 4 rows = 10 x 4 cm in filet crochet with size 4.5 mm hook and Fourseason; 21.5 sc/dc and 4 rows = 10 x 2.5 cm with size 4 mm hook and Per Fortuna.

Back: With size 4 mm hook and About Berlin Funky in Pink, ch 65 (71) + ch 1.

Work **chart A:**

Rows 1 – 5: With size 4 mm hook and About Berlin Funky in Pink, work dc rows.

Rows 6 – 9: With size 4.5 mm hook and Brigitte No. 4 in Pale Purple, work dc V-st patt.

On row 6, work dc V-st in every other dc on row below.

On rows 7 – 9, work dc V-st into ch-sp on row below.

Work 31 (34) patt reps across row.

Rows 10 – 15: With size 4 mm hook and About Berlin Funky in Cream, work dc rows.

On row 10, work dc between dc V-st and into ch-sp on row below.

Rows 16 – 19: With size 4.5 mm hook and Fourseason, work filet crochet.

On row 16, work 1 patt rep over 5 dc on row below.

Rows 20 – 25: With size 4.5 mm hook and Brigitte No. 4 in Off White, work dc V-st patt.

On row 20, work 5 patt reps over 2 patt reps on row below.

Work 31 (34) patt reps across row.

Work **chart B:**

Note: First row of chart B shows last row of chart A.

Rows 26 – 29: With size 4 mm hook and Per Fortuna, work sc and dc rows.

On row 26, work 3 sc over each patt rep on row below = 95 (104) sts.

Rows 30 – 35 [not shown on chart]: With size 4 mm hook and About Berlin Funky in Cream, work dc rows.

On row 30, sk 36 (39) dc evenly = 59 (65) dc.

Work **chart C:**

Rows 36 and 37: With size 4.5 mm hook and Brigitte No. 4 in Pale Purple, work dc V-st patt = 28 (31) patt reps.

Rows 38 and 39: With size 4.5 mm hook and Brigitte No. 4 in Off White, work dc V-st patt, work armhole shaping as shown on chart = 22 (25) patt reps.

Rows 40 – 43: With size 4 mm hook and Per Fortuna, work sc and dc rows, work armhole shaping on rows 40 and 41 as shown on chart.

Row 44: With size 4.5 mm hook and Brigitte No. 4 in Pale Purple, work dc V-st patt.

Not shown on chart:

Row 45: As row 44.

Row 46 and 47: With size 4 mm hook and About Berlin Funky in Orange, work dc rows.

Rows 48 and 49: With size 4.5 mm hook and Brigitte No. 4 in Off White, work dc V-st patt.

Rows 50 and 51 [size 40/42 only]: Work as rows 42 and 43.

At same time, on row 41 (43) = 2nd (4th) row worked with Per Fortuna, work center 16 (17) sts in sc instead of dc.

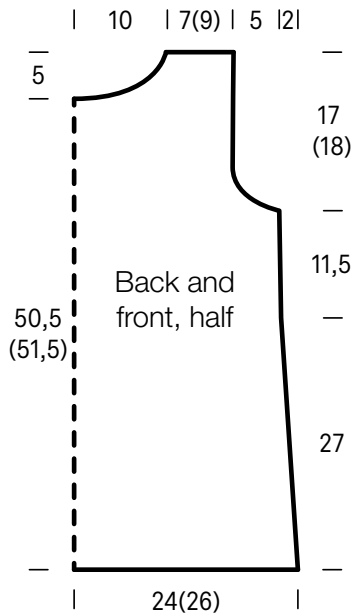
On row 42 (44), leave center 16 (17) sts unworked. Working each side separately, dec at each neck edge on every row 4 sts 2 times, 3 sts 1 time, 2 sts 1 time. Fasten off.

Front: Work same as back.

Finishing: Pin pieces to measurements and block. Sew shoulder and side seams. **Neck and armhole edging:** With size 4 mm hook and Brigitte No. 4 in Pale Purple, work 1 row sc, 1 row sl st along front neck edge and along front armhole edges. With size 4 mm hook and About Berlin Funky in Orange, work 1 row sc, 1 row sl st along back neck edge and along back armhole edges.

CROCHET TOP · FOURSEASON, BRIGITTE NO. 4, PER FORTUNA & ABOUT BERLIN FUNKY

Design 11 – About Berlin 09



CROCHET TOP · FOURSEASON, BRIGITTE NO. 4, PER FORTUNA & ABOUT BERLIN FUNKY

Design 11 – About Berlin 09



Chart

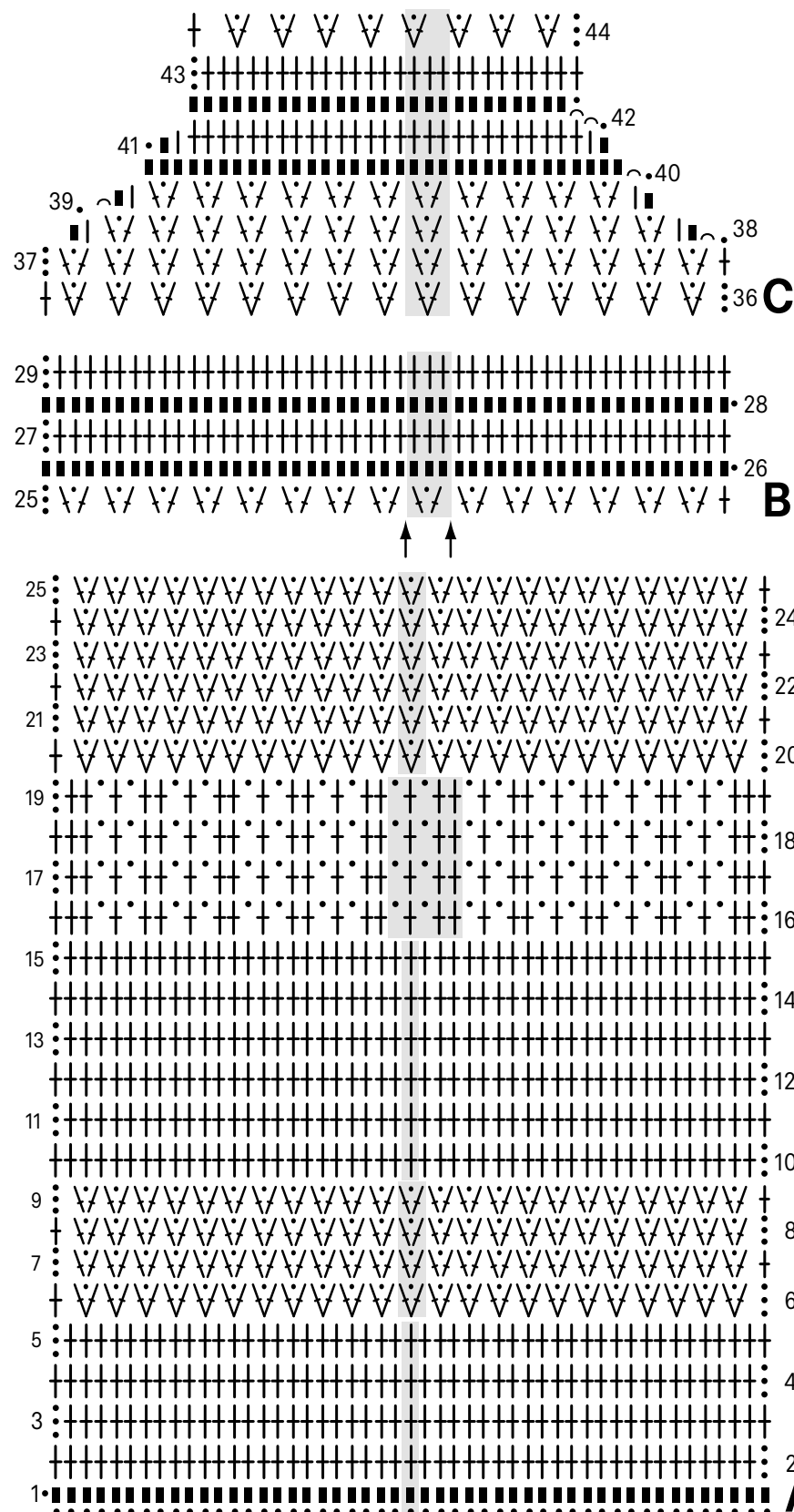


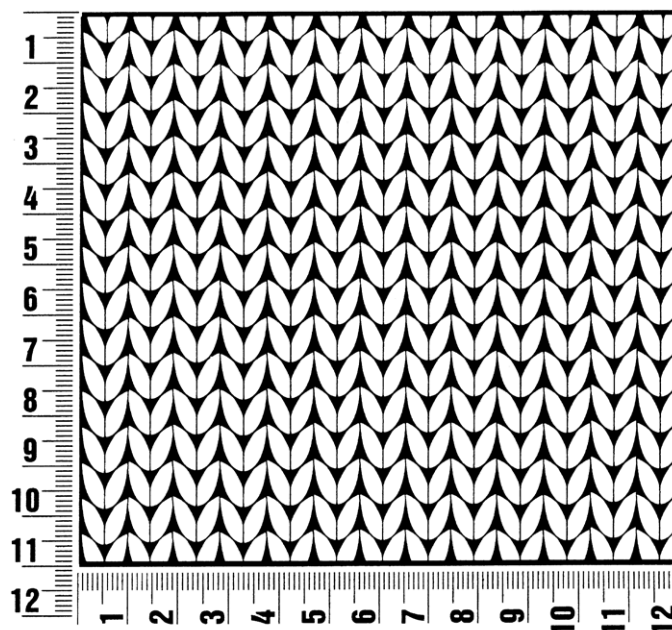
Chart key:

- = chain (ch)
- ~ = slip stitch (sl st)
- = single crochet (sc)
- | = half double crochet (hdc)
- ↑ = double crochet (dc)
- ∨ = dc V-st: [dc, ch 1, dc] in indicated st or sp

Gauge Swatch

Before you begin ...

...make a gauge swatch. Use the recommended needles, yarns and pattern stitch for your gauge swatch. It should measure approx. 12 cm x 12 cm. Cast-on and bind-off rows, as well as selvage stitches should not be included in the measurement. Pin your swatch and block it as you would the finished pieces of the garment. Count stitches and rows over 10 cm. If your gauge swatch is too small, switch to larger needles. If your gauge swatch is too big, switch to smaller needles.



Abbreviations

beg = begin(ning) · **ch** = chain · **cont** = continue · **dec** = decreas(e)(ing) · **inc** = increas(e)(ing) · **k** = knit · **kwise** = as if to knit
meas = measures · **M1L** = lift strand between sts from front to back and knit this strand through the back loop · **M1R** = lift strand between sts from the back and knit this strand through the front loop · **patt** = pattern · **pm** = place marker · **p** = purl
pwise = as if to purl · **rem** = remain(ing) · **rep** = repeat(s) · **rev St st** = reverse stockinette stitch · **rnd(s)** = round(s) · **RS** = right side · **sc** = single crochet · **skp** = slip 1 stitch as if to knit, knit 1 stitch, pass slipped stitch over knitted stitch · **sk2p** = slip 1 stitch as if to knit, knit 2 together, pass slipped stitch over knitted stitch · **s2kp** = slip 2 stitches as if to knit, k 1 stitch, pass slipped stitches over knitted stitch · **sl** = slip · **st(s)** = stitch(es) · **St st** = stockinette stitch · **tbl** = through the back loop · **tog** = together · **wyib** = with yarn in back of work · **wyif** = with yarn in front of work · **WS** = wrong side · **yo(s)** = yarn over(s)

Publisher's Info

Publisher: Lana Grossa GmbH, Gaimersheim, www.lanagrossa.com

Photographer: Yannick Schütte