



www.lanagrossa.com

CROCHET PULLOVER · FOURSEASON, BRIGITTE NO. 4 & PER FORTUNA

Design 13 – About Berlin 09

CROCHET PULLOVER · FOURSEASON, BRIGITTE NO. 4 & PER FORTUNA

Design 13 – About Berlin 09



Size One size

Materials: 150 g of Lana Grossa **Fourseason** (45% superfine organic Merino wool, 40% organic cotton, 15% recycled cashmere; 105 m/50 g) in Off White (**col 12**); 50 g each of Lana Grossa **Brigitte No. 4** (80% cotton, 20% baby alpaca; 110 m/50 g) in Pale Purple (**col 7**) and Grey Blue (**col 17**); 50 g of Lana Grossa **Per Fortuna** (74% organic cotton, 26% polyamide; 190 m/50 g) in Pink (**col 3**) and 100 g each in Ecru (**col 8**) and Orange (**col 11**). Size 3.5, 4 and 4.5 mm crochet hook; size 4.5 mm knitting needles; size 4.5 mm circular needle, 40 cm long.

Rib patt: K1, p1.

Chart A [back and front]: Numbers at right edge of chart indicate RS rows, numbers at left edge of chart indicate WS rows. Work first sc on first row in 2nd ch from hook. Beg each row with the number of ch shown on chart. Work incs for side shaping on rows 16 – 35 as shown. Work armhole shaping on rows 36 – 41 as shown. Fasten off at end of row 55.

Chart B [sleeves]: Numbers at right edge of chart indicate RS rows, numbers at left edge of chart indicate WS rows. Beg each row with the number of ch shown on chart. Work incs for sleeve shaping on rows 2 – 17 as shown on chart. Work decs for sleeve cap shaping on rows 19 – 34 as shown on chart. Fasten off at end of row 34.

Flowers: Make 46. Work according to chart C. Ch 3, sl st in first ch to form ring. Work rnd 1 into ring, sl st in first ch to join.

Ruffled edge: Work according to chart D. Join yarn with sl st, ch 1, work 1 rnd sc. Join this and all other rnds with sl st. Numbers at right edge of chart indicate rnds. Work to patt rep, work sts between arrows for patt rep, work to end of chart. Work sts on rnds 3 and 4 into ch-sp on rnd below. Work sc on rnd 5 into ch-sp and in dc on rnd below.

Stripe patt A [back and front]: Foundation chain + rows 1 – 5 with Fourseason Off White; rows 6 and 7 with Brigitte No. 4 Pale Purple; rows 8 – 15 with Per Fortuna Orange; rows 16 – 21 with Fourseason Off White; rows 22 and 23 with Brigitte No. 4 Grey Blue; rows 24 – 31 with Per Fortuna Pink; rows 32 – 35 with Fourseason Off White; rows 36 – 41 with Per Fortuna Orange; rows 42 – 45 with Fourseason Off White; rows 46 and 47 with Brigitte No. 4 Grey Blue; rows 48 and 49 with Brigitte No. 4 Pale Purple; rows 50 – 55 with Fourseason Off White.

Stripe patt B [sleeves]: Foundation chain + rows 1 – 3 with Fourseason Off White; rows 4 and 5 with Brigitte No. 4 Grey Blue; rows 6 – 13 with Per Fortuna Pink; rows 14 – 17 with Fourseason Off White; rows 18 – 23 with Per Fortuna Orange; rows 24 – 27 with Fourseason Off White; rows 28 and 29 with

Brigitte No. 4 Grey Blue; rows 30 and 31 with Brigitte No. 4 Pale Purple; rows 32 – 34 with Fourseason Off White.

Note: To change color, work to last yarn over in old color, pick up new color and complete st with new color.

Gauges: 7 patt reps (= 21 sts) and 4 rows = 10 x 4.5 cm in dc V-st patt with size 4.5 mm hook and Brigitte No. 4; 18 sts and 6 rows = 10 x 6 cm in filet crochet with size 4.5 mm hook and Fourseason; 25 sc/dc and 8 rows = 10 x 5 cm with size 4 mm hook and Per Fortuna.

Back: With size 4.5 mm hook and Fourseason Off White, ch 72 + ch 1. Work chart A and stripe patt A. NOTE: Work Fourseason and Brigitte No. 4 rows with size 4.5 mm hook. Work Per Fortuna rows with size 4 mm hook. **Row 1:** With size 4.5 mm hook and Fourseason Off White, work 1 row sc = 72 sc. **Rows 2 – 5:** Work filet crochet. **Rows 6 and 7:** Work dc V-st patt. On row 7, work dc V-st into ch-sp on row below. **Rows 8 – 15:** Work sc and dc rows – 102 sc on row 8. **Rows 16 – 21:** Work filet crochet. **Rows 22 and 23:** Work dc V-st patt. **Rows 24 – 31:** Work sc and dc rows – 112 sc on row 24, 118 dc on row 31. **Rows 32 – 35:** Work filet crochet. **Rows 36 – 41:** Work sc and dc rows – 92 dc on row 41. **Rows 42 – 45:** Work filet crochet. **Rows 46 – 49:** Work dc V-st patt. **Rows 50 – 55:** Work filet crochet. Fasten off.

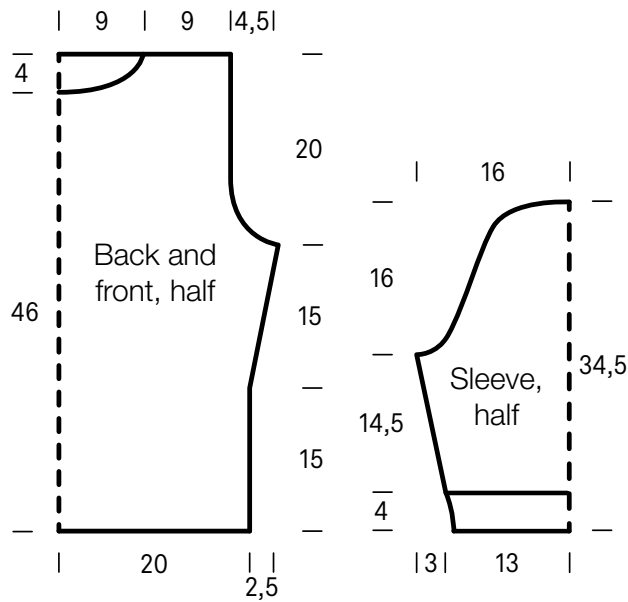
Front: Work same as back through chart row 51. Shape neck: **Row 52:** Leave sts shown in grey unworked. Working each side separately, work to end of chart, work neck shaping as shown in grey. Fasten off.

Sleeves: With size 4.5 mm knitting needles and Brigitte No. 4 Pale Purple cast on 67 sts. Beg and end with a WS row, work in rib patt for 9 rows = 4 cm. Loosely bind off all sts in rib. With RS facing and size 4.5 mm crochet hook, join Fourseason Off White with sl st to first st on last row. Work chart B and stripe patt B – 50 sc on row 1, 81 sc on row 6, 91 dc on row 13, 99 sc on row 18. NOTE: Work Fourseason and Brigitte No. 4 rows with size 4.5 mm hook. Work Per Fortuna rows with size 4 mm hook. Fasten off at end of row 34.

Finishing: Pin pieces to measurements and block. Sew shoulder seams. **Neckband:** With size 4.5 mm circular needle and Per Fortuna Ecru, pick up and k 76 sts evenly around neck edge. Place beg of rnd marker and join for working in rnds. Work rib patt in rnds for 2.5 cm. Bind off all sts in rib. Sew in sleeves. Sew side and sleeve seams. **Bottom edging:** Using size 4 mm hook and Per Fortuna Ecru, work ruffled edging around bottom edge of body, working 1 sc in each ch on rnd 1. Fasten off at end of rnd 6. **Sleeve edging:** Using size 4 mm hook and Per Fortuna Ecru, work ruffled edging around bottom edge of sleeves, working 63 sc on rnd 1. Fasten off at end of rnd 6. With size 3.5 mm hook and Per Fortuna Ecru, crochet 46 flowers. Using photo as guide, sew on flowers.

CROCHET PULLOVER · FOURSEASON, BRIGITTE NO. 4 & PER FORTUNA

Design 13 – About Berlin 09

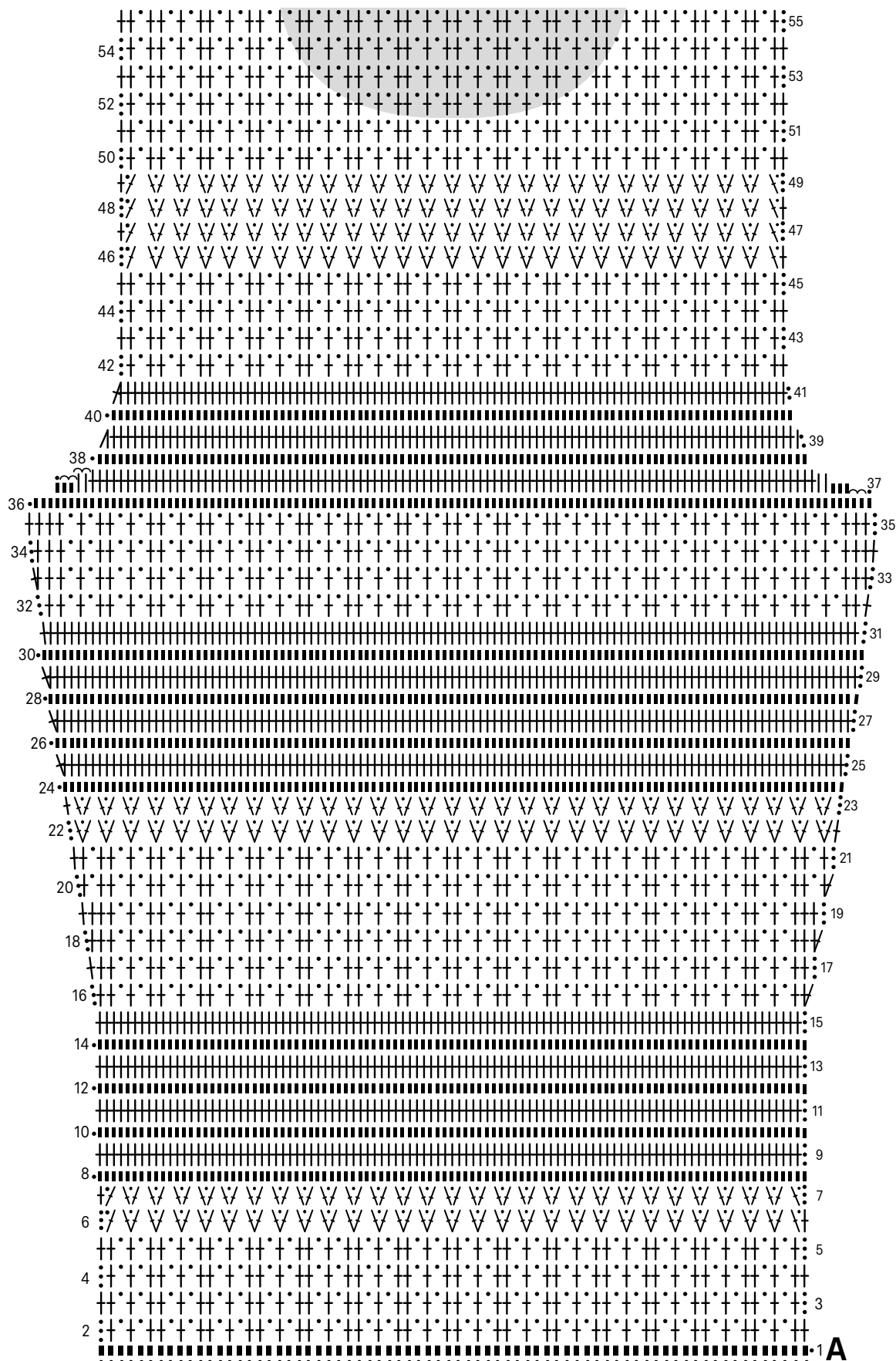


CROCHET PULLOVER · FOURSEASON, BRIGITTE NO. 4 & PER FORTUNA

Design 13 – About Berlin 09



Chart A

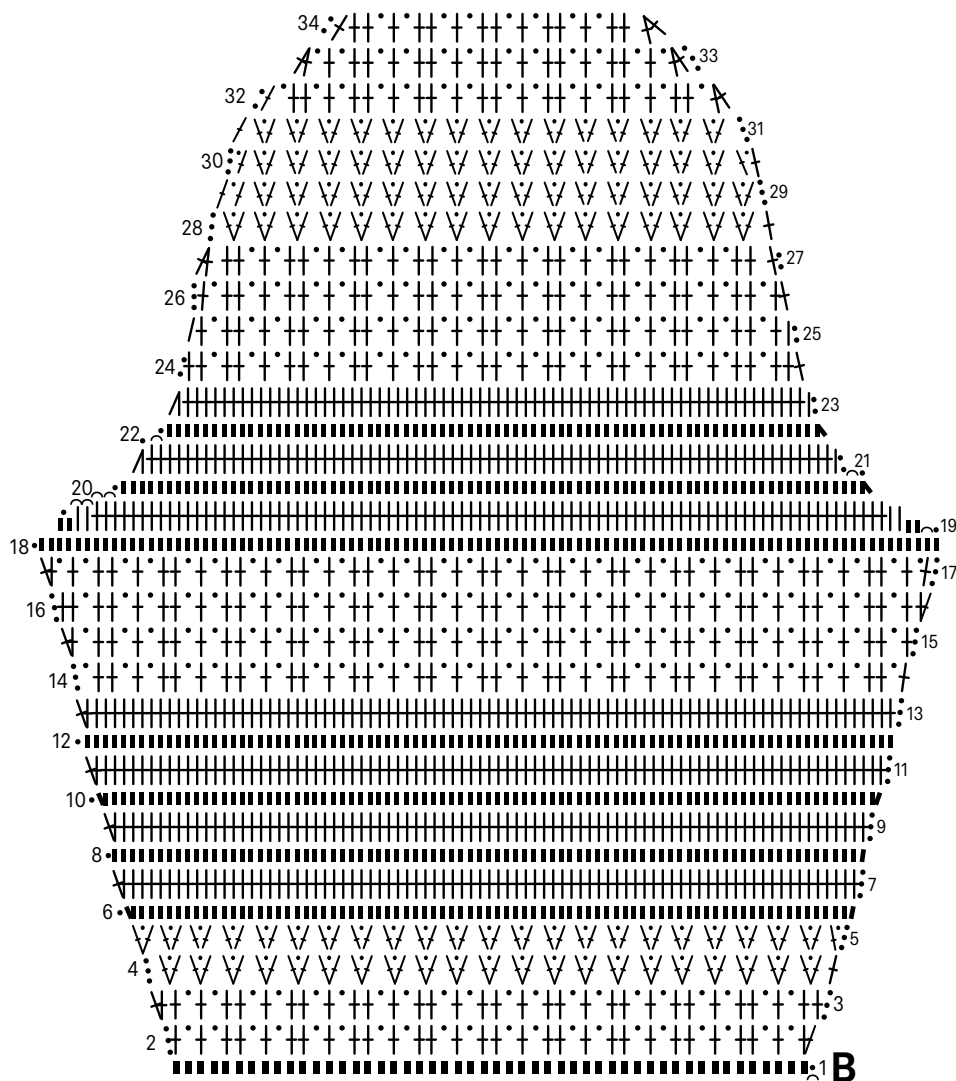


CROCHET PULLOVER · FOURSEASON, BRIGITTE NO. 4 & PER FORTUNA

Design 13 – About Berlin 09



Chart B



Charts C and D

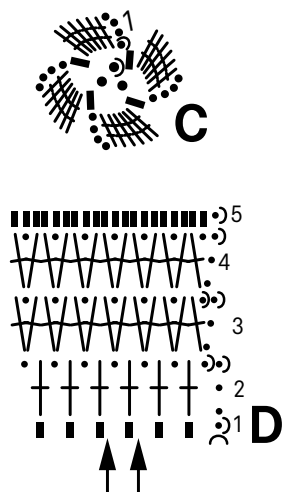


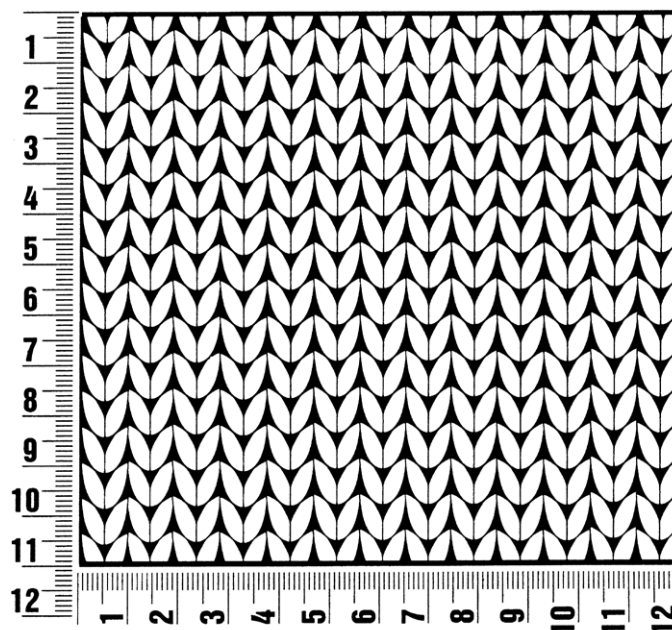
Chart key:

- = chain (ch)
- ∩ = slip stitch (sl st)
- = single crochet (sc)
- = 2 sc in same st or sp
- ▲ = sc2tog
- | = half double crochet (hdc)
- | = double crochet (dc)
- ∧ = hdc2tog
- ∧ = dc2tog
- ∧ = 2 dc in same st or sp
- ∧ = dc V-st: [dc, ch 1, dc] in indicated st or sp
- ⊥ = treble (tr)

Gauge Swatch

Before you begin ...

...make a gauge swatch. Use the recommended needles, yarns and pattern stitch for your gauge swatch. It should measure approx. 12 cm x 12 cm. Cast-on and bind-off rows, as well as selvage stitches should not be included in the measurement. Pin your swatch and block it as you would the finished pieces of the garment. Count stitches and rows over 10 cm. If your gauge swatch is too small, switch to larger needles. If your gauge swatch is too big, switch to smaller needles.



Abbreviations

beg = begin(ning) · **ch** = chain · **cont** = continue · **dec** = decreas(e)(ing) · **inc** = increas(e)(ing) · **k** = knit · **kwise** = as if to knit
meas = measures · **M1L** = lift strand between sts from front to back and knit this strand through the back loop · **M1R** = lift strand between sts from the back and knit this strand through the front loop · **patt** = pattern · **pm** = place marker · **p** = purl
pwise = as if to purl · **rem** = remain(ing) · **rep** = repeat(s) · **rev St st** = reverse stockinette stitch · **rnd(s)** = round(s) · **RS** = right side · **sc** = single crochet · **skp** = slip 1 stitch as if to knit, knit 1 stitch, pass slipped stitch over knitted stitch · **sk2p** = slip 1 stitch as if to knit, knit 2 together, pass slipped stitch over knitted stitch · **s2kp** = slip 2 stitches as if to knit, k 1 stitch, pass slipped stitches over knitted stitch · **sl** = slip · **st(s)** = stitch(es) · **St st** = stockinette stitch · **tbl** = through the back loop · **tog** = together · **wyib** = with yarn in back of work · **wyif** = with yarn in front of work · **WS** = wrong side · **yo(s)** = yarn over(s)

Publisher's Info

Publisher: Lana Grossa GmbH, Gaimersheim, www.lanagrossa.com

Photographer: Yannick Schütte