



www.lanagrossa.com

PULLOVER · ABOUT BERLIN VANITY
Design 20 – About Berlin 09

PULLOVER · ABOUT BERLIN VANITY

Design 20 – About Berlin 09



Size One size

Materials: 450 g of Lana Grossa **About Berlin Vanity** (54% cotton, 21% viscose, 13% silk, 12% polyamide; 130 m/50 g) in Salmon/Grey Green/Vanilla/Grey Blue/Violet Variegated (**col 4**). Size 3.5 and 5 mm needles; size 3.5 mm circular needle, 50 cm long.

Selvage stitches: On every row: Sl first st kwise, k last st.

Rib patt: K1, p1.

St st: K on RS, p on WS.

Full-fashion decrease (dbl decrease): At beg of RS row, selvage st, work rib patt over next 3 sts = p1, k1, p1, k2tog (k3tog); at end of RS row, work to last 6 (7) sts, skp (sk2p), work rib patt over next 3 sts = p1, k1, p1, selvage st – 1 (2) st(s) decreased at each edge.

Full-fashion increase: On RS row: M1R, 2 sts in from each edge.

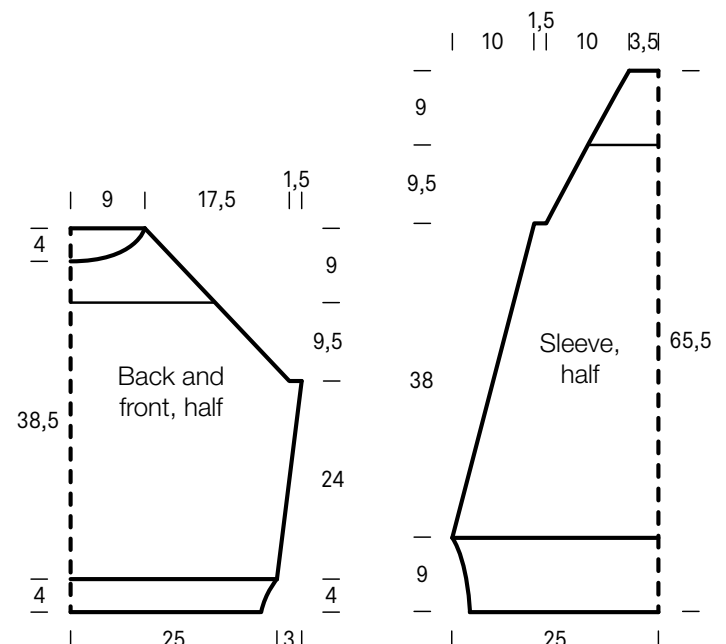
Gauge: 19 sts and 26 rows = 10 x 10 cm in St st on size 5 mm needles.

Back: With size 3.5 mm needles cast on 98 sts. Beg and end with a WS row and working first and last st as selvage sts, work in rib patt for 4 cm, decreasing 1 st at end of last WS row = 97 sts. Change to size 5 mm needles. Maintaining selvage sts, work in St st and shape sides as foll: Working full-fashion inc, inc 1 st at each end of 5th row, then every 10th row 5 times = 109 sts. Work even until piece meas 24 cm from end of rib patt, ending with a WS row. Shape raglan: Bind off 3 sts at beg of next 2 rows. Working full-fashion dec, dec 1 st at each end of next 15 RS rows, 2 sts at each end of next 8 RS rows. At same time, when piece meas 9.5 cm from beg of raglan shaping, work rib patt across all sts. After all raglan decs have been worked and raglan meas 18.5 cm, bind off rem 35 sts.

Front: Work same as back to raglan shaping. Shape raglan same as for back. At same time, when piece meas 9.5 cm from beg of raglan shaping, work rib patt across all sts for 5 cm, ending with a WS row. Shape neck: Next row (RS): Bind off center 9 sts. Working each side separately, bind off 2 sts at each neck edge 4 times and when same length as back to shoulders, bind off rem 5 sts for each shoulder.

Sleeves: With size 3.5 mm needles cast on 98 sts. Beg and end with a WS row and working first and last st as selvage sts, work in rib patt for 9 cm, decreasing 1 st at end of last WS row = 97 sts. Change to size 5 mm needles. Maintaining selvage sts, work in St st for 4 rows, ending with a WS row. Next RS (dec) row: Selvage st, k1, k2tog, work to last 4 sts, k2tog, k1, selvage st. Work even for 3 rows. Mark center 33 sts. Next RS (dec) row: Selvage st, k1, k2tog, work to 2 sts before marker, k2tog, slm, k33, slm, skp, work to last 4 sts, k2tog, k1, selvage st. Rep last dec row every 10th row 8 times = 59 sts. Work even until piece meas 38 cm from end of rib patt, ending with a WS row. Shape sleeve cap: Bind off 3 sts at beg of next 2 rows. Working full-fashion dec, dec 1 st at each end of next 14 RS rows, then every alt RS row 5 times. At same time, when piece meas 9.5 cm from beg of cap shaping, work rib patt across all sts. After all cap decs have been worked and sleeve cap meas 18.5 cm, bind off rem 15 sts.

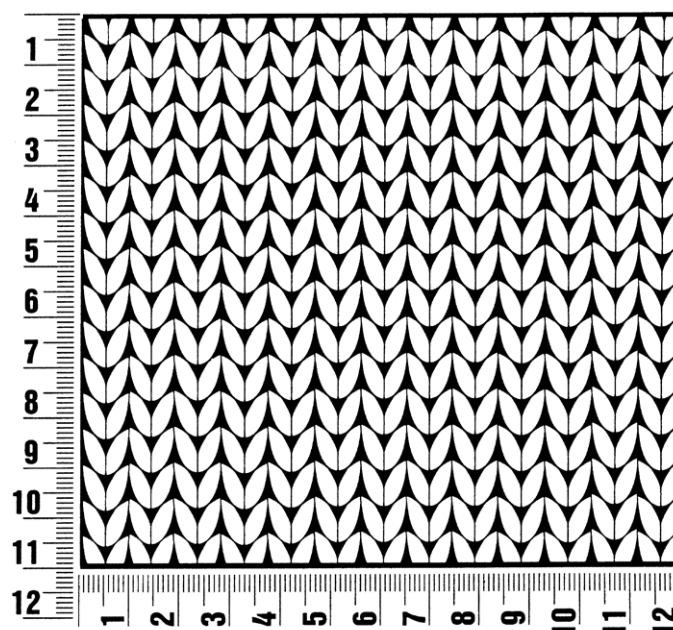
Finishing: Pin pieces to measurements and block. Sew raglan, side and sleeve seams. **Neckband:** With size 3.5 mm circular needle, pick up and k 108 sts evenly around neck edge. Place beg of rnd marker and join for working in rnds. Work rib patt in rnds for 3.5 cm, matching picked up sts as much as possible to rib patt on body. Bind off all sts in rib.



Gauge Swatch

Before you begin ...

...make a gauge swatch. Use the recommended needles, yarns and pattern stitch for your gauge swatch. It should measure approx. 12 cm x 12 cm. Cast-on and bind-off rows, as well as selvage stitches should not be included in the measurement. Pin your swatch and block it as you would the finished pieces of the garment. Count stitches and rows over 10 cm. If your gauge swatch is too small, switch to larger needles. If your gauge swatch is too big, switch to smaller needles.



Abbreviations

beg = begin(ning) · **ch** = chain · **cont** = continue · **dec** = decreas(e)(ing) · **inc** = increas(e)(ing) · **k** = knit · **kwise** = as if to knit
meas = measures · **M1L** = lift strand between sts from front to back and knit this strand through the back loop · **M1R** = lift strand between sts from the back and knit this strand through the front loop · **patt** = pattern · **pm** = place marker · **p** = purl
pwise = as if to purl · **rem** = remain(ing) · **rep** = repeat(s) · **rev St st** = reverse stockinette stitch · **rnd(s)** = round(s) · **RS** = right side · **sc** = single crochet · **skp** = slip 1 stitch as if to knit, knit 1 stitch, pass slipped stitch over knitted stitch · **sk2p** = slip 1 stitch as if to knit, knit 2 together, pass slipped stitch over knitted stitch · **s2kp** = slip 2 stitches as if to knit, k 1 stitch, pass slipped stitches over knitted stitch · **sl** = slip · **st(s)** = stitch(es) · **St st** = stockinette stitch · **tbl** = through the back loop · **tog** = together · **wyib** = with yarn in back of work · **wyif** = with yarn in front of work · **WS** = wrong side · **yo(s)** = yarn over(s)

Publisher's Info

Publisher: Lana Grossa GmbH, Gaimersheim, www.lanagrossa.com

Photographer: Sarah Blais