



www.lanagrossa.com

PULLOVER · BRIGITTE NO. 4
Design 22 – About Berlin 09

PULLOVER · BRIGITTE NO. 4

Design 22 – About Berlin 09



Size 36 – 40 (42/44)

Instructions are given for smaller size. Figure in parenthesis refers to larger size. When only one figure is given, it applies to both sizes.

Materials: 500 (550) g of Lana Grossa **Brigitte No. 4** (80% cotton, 20% baby alpaca; 110 m/50 g) in Fire Red (col 22). Size 3.5 and 4 mm needles; size 3.5 mm circular needle, 50 cm long.

Selvage stitches: On every row: Sl first st kwise, k last st.

Rib patt: K1, p1.

Chart patt: Numbers at right edge of chart indicate RS rows, numbers at left edge of chart indicate WS rows. Work to patt rep, work 12 sts between arrows for patt rep, work to end of chart. Rep rows 1 – 16.

Seed stitch: Row 1: K1, p1. Row 2: Purl the knit sts and knit the purl sts. Rep row 2 for seed st.

Gauges: On size 4 mm needles: 20 sts and 31.5 rows = 10 x 10 cm in chart patt; 20 sts and 33 rows = 10 x 10 cm in seed st.

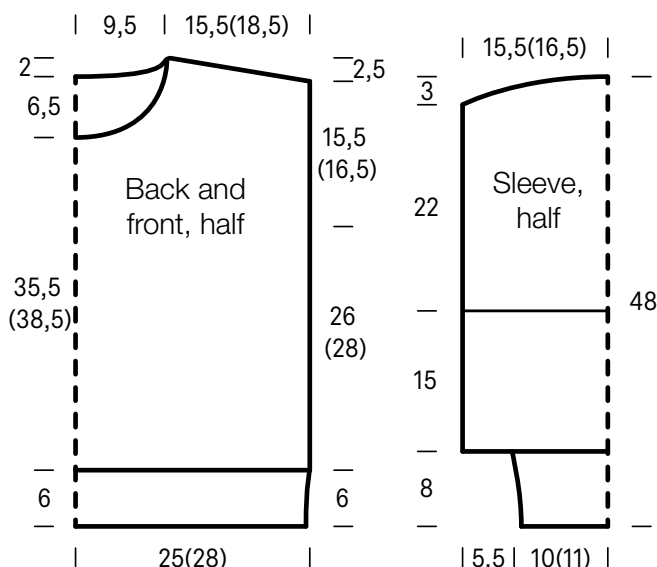
Back: With size 3.5 mm needles cast on 101 (113) sts. Beg and end with a WS row and working first and last st as selvage sts, work in rib patt for 19 rows and piece meas 6 cm from cast-on. Change to size 4 mm needles. Work chart for 82 (88) rows = 26 (28) cm, working patt rep 8 (9) times across row. Place marker in first and last st on last WS row to indicate beg of armholes. Cont chart until 48 (52) rows = 15.5 (16.5) cm have been worked from armhole markers.

Shape shoulders and neck: At each shoulder edge bind off 8 (10) sts 1 time, then 8 sts 3 times (then 10 sts 1 time, 9 sts 2 times). **At same time**, when working 2nd RS shoulder bind-off row, shape neck as foll: Bind off center 31 sts. Working each side separately, bind off 3 sts at each neck edge 1 time. No sts rem.

Front: Work same as back until 30 (34) rows = 9.5 (10.5) cm have been worked from armhole markers. Shape neck: Next row (RS): Bind off center 17 sts. Working each side separately, bind off 3 sts at each neck edge 1 time, 2 sts 2 times, 1 st 3 times and when same length as back to shoulders, shape shoulders same as for back. No sts rem.

Sleeves: With size 3.5 mm needles cast on 50 (54) sts. Beg and end with a WS row and working first and last st as selvage sts, work in rib patt for 25 rows and piece meas 8 cm from cast-on, increasing 15 sts evenly across last WS row = 65 (69) sts. Change to size 4 mm needles. Work in seed st for 50 rows = 15 cm. Work chart for 70 rows = 22 cm: **For size 36 – 40**, work to patt rep, work patt rep 4 times, work to end of chart. **For size 42/44**, work first chart st, work next 2 sts 2 times, work to patt rep, work patt rep 4 times, work to last 3 chart sts, work next 2 sts 2 times, work last chart st. Shape sleeve cap: Bind off 4 sts at beg of next 10 rows. Bind off rem 25 (29) sts.

Finishing: Pin pieces to measurements and block. Sew shoulder seams. **Neckband:** With size 3.5 mm circular needle, pick up and k 120 sts evenly around neck edge. Place beg of rnd marker and join for working in rnds. Work rib patt in rnds for 9 cm. Loosely bind off all sts in rib. Sew neckband in half to WS and sew down. Sew on sleeves between markers. Sew side and sleeve seams.



PULLOVER · BRIGITTE NO. 4

Design 22 – About Berlin 09



Chart

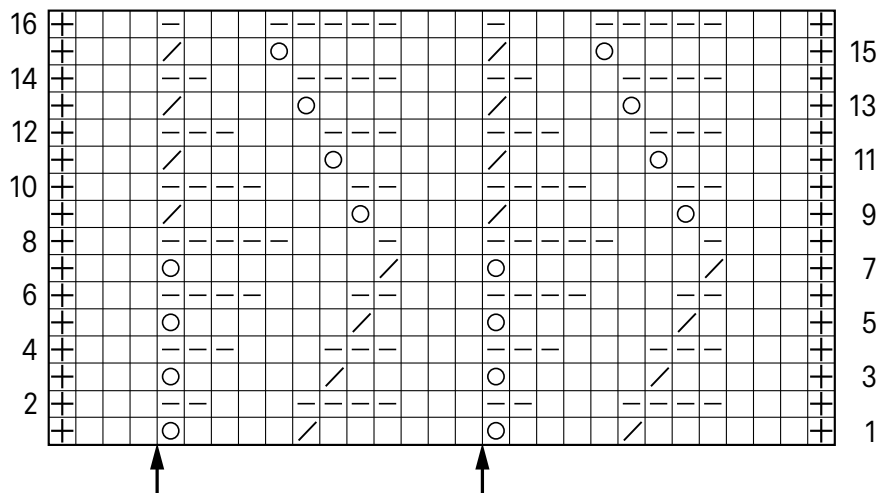


Chart key:

- ⊕ = selvage st
- = k1
- ▬ = p1
- = yo
- ⧵ = k2tog

Gauge Swatch

Before you begin ...

...make a gauge swatch. Use the recommended needles, yarns and pattern stitch for your gauge swatch. It should measure approx. 12 cm x 12 cm. Cast-on and bind-off rows, as well as selvage stitches should not be included in the measurement. Pin your swatch and block it as you would the finished pieces of the garment. Count stitches and rows over 10 cm. If your gauge swatch is too small, switch to larger needles. If your gauge swatch is too big, switch to smaller needles.



Abbreviations

beg = begin(ning) · **ch** = chain · **cont** = continue · **dec** = decreas(e)(ing) · **inc** = increas(e)(ing) · **k** = knit · **kwise** = as if to knit
meas = measures · **M1L** = lift strand between sts from front to back and knit this strand through the back loop · **M1R** = lift strand between sts from the back and knit this strand through the front loop · **patt** = pattern · **pm** = place marker · **p** = purl
pwise = as if to purl · **rem** = remain(ing) · **rep** = repeat(s) · **rev St st** = reverse stockinette stitch · **rnd(s)** = round(s) · **RS** = right side · **sc** = single crochet · **skp** = slip 1 stitch as if to knit, knit 1 stitch, pass slipped stitch over knitted stitch · **sk2p** = slip 1 stitch as if to knit, knit 2 together, pass slipped stitch over knitted stitch · **s2kp** = slip 2 stitches as if to knit, k 1 stitch, pass slipped stitches over knitted stitch · **sl** = slip · **st(s)** = stitch(es) · **St st** = stockinette stitch · **tbl** = through the back loop · **tog** = together · **wyib** = with yarn in back of work · **wyif** = with yarn in front of work · **WS** = wrong side · **yo(s)** = yarn over(s)

Publisher's Info

Publisher: Lana Grossa GmbH, Gaimersheim, www.lanagrossa.com

Photographer: Sarah Blais