



www.lanagrossa.com

TOP · ABOUT BERLIN VANITY
Design 27 – About Berlin 09

TOP · ABOUT BERLIN VANITY

Design 27 – About Berlin 09



Size 36/38 (40/42, 44/46)

Instructions are given for first size. Figures in parenthesis refer to larger sizes. When only one figure is given, it applies to all sizes.

Materials: 450 (500, 550) g of Lana Grossa **About Berlin Vanity** (54% cotton, 21% viscose, 13% silk, 12% polyamide; 130 m/50 g) in Green/Jean/Pastel Pink/Natural Variegated (col 5). Size 3.5 and 5 mm needles.

Slip garter selvage: On every row: Sl first st kwise, k last st.

Chart A – D: Numbers at right edge of chart indicate RS rows, numbers at left edge of chart indicate WS rows. Work to patt rep, work 2 sts between arrows for patt rep, work to end of chart. For **rib patt** with three-stitch selvage [first and last 3 sts shown in grey], rep rows 1 and 2 of chart **A**. For **St st** with three-stitch selvage [first and last 3 sts shown in grey], rep rows 1 and 2 of chart **B**. For **St st** with slip garter selvage, rep rows 1 and 2 of chart **C**. For **St st** with three-stitch selvage [first and last 3 sts shown in grey] and 1 st in rev St st after and before three-stitch selvage, rep rows 1 and 2 of chart **D**.

Full-fashion increase: On RS row: M1R, 5 sts in from each edge.

Gauge: 20.5 sts and 28 rows = 10 x 10 cm in St st on size 5 mm needles.

Back: With size 3.5 mm needles cast on 107 (115, 123) sts. Work chart **A** for 44 rows and piece meas 12 cm from cast-on. Change to size 5 mm needles. Work chart **B** for 16 rows and shape sides as foll: Working full-fashion inc, inc 1 st at each end of 11th row = 109 (117, 125) sts. Work chart **C** for 96 (94, 92) rows = 34 (33, 32) cm and cont side shaping as foll: Working full-fashion inc, inc 1 st at each end of 5th row, then every 10th row 8 times = 127 (135, 143) sts. Place marker in first and last st on last WS row to indicate beg of armholes. Work chart **D** for 40 (42, 44) rows = 14 (15, 16) cm. Change to size 3.5 mm needles. Work chart **A** for 34 rows = 9 cm. Bind off 44 (48, 52) sts at beg of next 2 rows = 39 sts rem for collar. Work in patt across collar sts for 18 rows = 5 cm. Bind off all sts in rib.

Front: Work same as back.

Finishing: Pin pieces to measurements and block. Sew shoulder and side seams, leaving bottom 18 cm of side seams open for split hem.

TOP · ABOUT BERLIN VANITY

Design 27 – About Berlin 09



Chart A – D

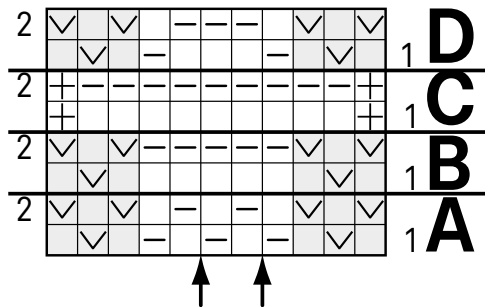
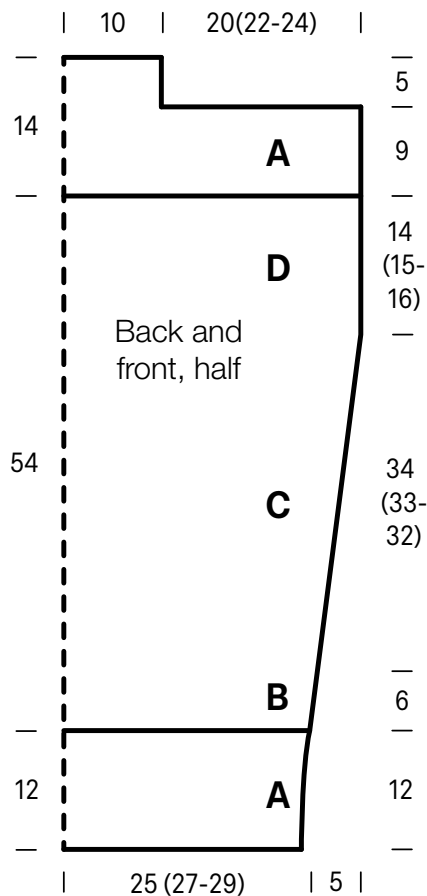


Chart key:

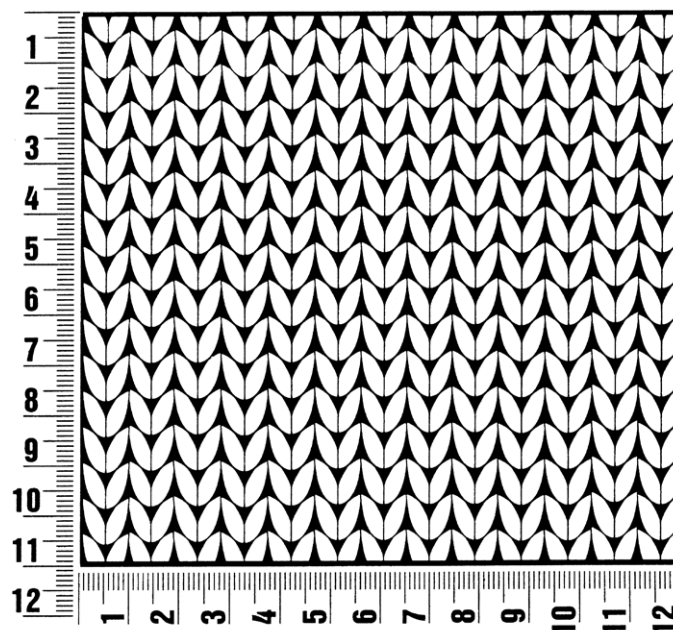
- ⊕ = selvage st
- = k1
- ▢ = p1
- ∇ = sl 1 pwise wyif



Gauge Swatch

Before you begin ...

...make a gauge swatch. Use the recommended needles, yarns and pattern stitch for your gauge swatch. It should measure approx. 12 cm x 12 cm. Cast-on and bind-off rows, as well as selvage stitches should not be included in the measurement. Pin your swatch and block it as you would the finished pieces of the garment. Count stitches and rows over 10 cm. If your gauge swatch is too small, switch to larger needles. If your gauge swatch is too big, switch to smaller needles.



Abbreviations

beg = begin(ning) · **ch** = chain · **cont** = continue · **dec** = decreas(e)(ing) · **inc** = increas(e)(ing) · **k** = knit · **kwise** = as if to knit
meas = measures · **M1L** = lift strand between sts from front to back and knit this strand through the back loop · **M1R** = lift strand between sts from the back and knit this strand through the front loop · **patt** = pattern · **pm** = place marker · **p** = purl
pwise = as if to purl · **rem** = remain(ing) · **rep** = repeat(s) · **rev St st** = reverse stockinette stitch · **rnd(s)** = round(s) · **RS** = right side · **sc** = single crochet · **skp** = slip 1 stitch as if to knit, knit 1 stitch, pass slipped stitch over knitted stitch · **sk2p** = slip 1 stitch as if to knit, knit 2 together, pass slipped stitch over knitted stitch · **s2kp** = slip 2 stitches as if to knit, k 1 stitch, pass slipped stitches over knitted stitch · **sl** = slip · **st(s)** = stitch(es) · **St st** = stockinette stitch · **tbl** = through the back loop · **tog** = together · **wyib** = with yarn in back of work · **wyif** = with yarn in front of work · **WS** = wrong side · **yo(s)** = yarn over(s)

Publisher's Info

Publisher: Lana Grossa GmbH, Gaimersheim, www.lanagrossa.com

Photographer: Sarah Blais