



[www.lanagrossa.com](http://www.lanagrossa.com)



**PONCHO PULLOVER .**  
**GOMITOLO DENIM GRAFFITI**  
Design 05 – Gomitolo 07

# PONCHO PULLOVER ·

## GOMITOLO DENIM GRAFFITI

### Design 05 – Gomitolo 07



**Size** 36/38 (40/42, 44)

Instructions are given for first size. Figures in parenthesis refer to larger sizes. When only one figure is given, it applies to all sizes.

**Materials:** 600 (600, 800) g of Lana Grossa **Gomitolo Denim Graffiti** (80% cotton 20% polyamide; 740 m/200 g) in Red/Wine/Aubergine/Light Green/Light Blue/Turquoise (col 353). Size 3.5 and 4 mm circular needles, each 80 cm long; size 4 mm crochet hook.

**Rib patt:** P2, k2.

**Mesh stitch:** Multiple of 2. Work according to chart. Numbers at right edge of chart indicate RS rows; on WS rows purl all sts and yos. Rep rows 1 – 8.

**Slip stitch selvage:** On RS row, ktbl first st, sl last st pwise wyib; on WS row, ptbl first st, sl last st pwise wyif.

**Full-fashion increase:** On RS row: M1R or M1L as needed for rib patt, 2 sts in from each edge. Work increased sts into patt.

**Gauges:** 17 sts and 28 rows = 10 x 10 cm in mesh st on size 4 mm needles; 26 sts and 32 rows = 10 x 10 cm in rib patt on size 3.5 mm needles, measured slightly stretched.

**Back and front:** Worked side to side and in one piece. Arrow on schematic shows direction of work. With size 3.5 mm circular needle cast on 172 (180, 188) sts. Next row (WS): Slip st selvage, \* p2, k2; rep from \* to last 3 sts, p2, slip st selvage. Cont in rib patt as set by last row until piece meas 10 cm from cast-on, ending with a WS row. Change to size 4 mm circular needle. Next row (RS): Slip st selvage, work chart over next 170 (178, 186) sts = work to patt rep, work patt rep 84 (88, 92) times, work to end of chart; slip st selvage. NOTE: Selvage sts are not included on chart. Work in patt as set by last row until piece meas 26 cm from cast-on, ending with a WS row. Divide work at center for armhole. \* Next row (RS): Patt

over 86 (90, 94) sts and turn, leaving rem 86 (90, 94) sts on hold. Next row (WS): Cast on 1 st and work as slip st selvage, patt to end of row = 87 (91, 95) sts. Work even in patt until piece meas 20 (21, 22) cm from divide, ending with a WS row. Place sts on holder, cut yarn. Return 86 (90, 94) held sts to size 4 mm circular needle and with RS facing, rejoin yarn. Next row (RS): Cast on 1 st and work as slip st selvage, patt to end of row = 87 (91, 95) sts. Complete as given for first side, ending with a RS row. Next WS (joining row): Patt over sts on needle and sts on holder and work last st on needle and first st on holder tog = 172 (180, 188) sts.\* Cont in patt across all sts until piece meas 8 (9, 10) cm from joining row, ending with a WS row. Divide work at center for neck and work from \* to \* for 22 cm. Cont in patt across all sts until piece meas 8 (9, 10) cm from joining row, ending with a WS row. Divide work at center for armhole and work from \* to \* same as for first armhole. Cont in patt across all sts until piece meas 16 cm from joining row, ending with a chart row 6. Change to size 3.5 mm circular needle. Next row (RS): Slip st selvage, \* k2, p2; rep from \* to last 3 sts, k2, slip st selvage. Cont in rib patt as set by last row until a total of 10 cm has been worked in rib patt. Bind off all sts in rib.

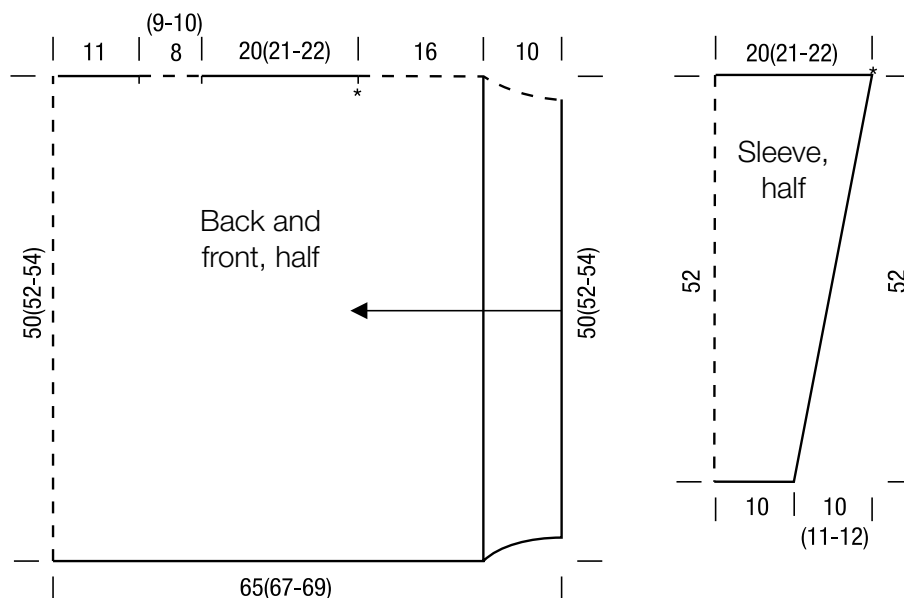
**Sleeves:** With size 3.5 mm circular needle cast on 54 sts. Next row (WS): Selvage st (p on WS, k on RS), p1, \* k2, p2; rep from \* to last 4 sts, k2, p1, selvage st (p on WS, k on RS). Cont in rib patt as set by last row and shape sleeve as foll: Working full-fashion inc, inc 1 st at each end of 10th row from cast-on, then every 6th row 25 times (then every 6th row 17 times, then every alt 4th and 6th row 10 times / then every 6th row 7 times, then every alt 4th and 6th row 22 times) = 106 (110, 114) sts. Work increased sts into rib patt. Work even until piece meas 52 cm from cast-on. Bind off all sts in rib.

**Finishing:** Pin back and front to measurements and block, omitting ribbing. Do not block sleeves. Sew sleeve seams. Set sleeves into armholes [see \* on schematic]. **Neck edging:** With size 4 mm crochet hook, sc around neck edge. With size 4 mm crochet hook, work 1 row sc along each side edge.

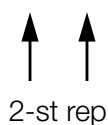
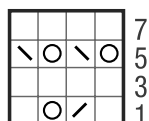
# PONCHO PULLOVER ·

## GOMITOLO DENIM GRAFFITI

### Design 05 – Gomitolo 07



#### Chart



#### Chart key:

- = k1
- = yo
- = k2tog
- = skp: sl 1 kwise, k1, pass slipped st over knitted st



## Gauge Swatch

### Before you begin ...

...make a gauge swatch. Use the recommended needles, yarns and pattern stitch for your gauge swatch. It should measure approx. 12 cm x 12 cm. Cast-on and bind-off rows, as well as selvage stitches should not be included in the measurement. Pin your swatch and block it as you would the finished pieces of the garment. Count stitches and rows over 10 cm. If your gauge swatch is too small, switch to larger needles. If your gauge swatch is too big, switch to smaller needles.



## Abbreviations

**beg** = begin(ning) · **ch** = chain · **cont** = continue · **dec** = decreas(e)(ing) · **inc** = increas(e)(ing) · **k** = knit · **kwise** = as if to knit  
**meas** = measures · **M1L** = lift strand between sts from front to back and knit this strand through the back loop · **M1R** = lift strand between sts from the back and knit this strand through the front loop · **patt** = pattern · **pm** = place marker · **p** = purl  
**pwise** = as if to purl · **rem** = remain(ing) · **rep** = repeat(s) · **rev St st** = reverse stockinette stitch · **rnd(s)** = round(s) · **RS** = right side · **sc** = single crochet · **skp** = slip 1 stitch as if to knit, knit 1 stitch, pass slipped stitch over knitted stitch · **sk2p** = slip 1 stitch as if to knit, knit 2 together, pass slipped stitch over knitted stitch · **s2kp** = slip 2 stitches as if to knit, k 1 stitch, pass slipped stitches over knitted stitch · **sl** = slip · **st(s)** = stitch(es) · **St st** = stockinette stitch · **tbl** = through the back loop · **tog** = together · **wyib** = with yarn in back of work · **wyif** = with yarn in front of work · **WS** = wrong side · **yo(s)** = yarn over(s)

### Publisher's Info

**Publisher:** Lana Grossa GmbH, Gaimersheim, [www.lanagrossa.com](http://www.lanagrossa.com)

**Photographer:** Herberth Dehn