



[www.lanagrossa.com](http://www.lanagrossa.com)

# JACKET · GOMITOLO DENIM GRAFFITI

Design 07 – Gomitolo 07



# JACKET •

## GOMITOLO DENIM GRAFFITI

### Design 07 – Gomitolo 07



**Size** 36 – 40 (42 – 46)

Instructions are given for smaller size. Figure in parenthesis refers to larger size. When only one figure is given, it applies to both sizes.

**Materials:** 600 (800) g of Lana Grossa **Gomitolo Denim Graffiti** (80% cotton 20% polyamide; 740 m/200 g) in Chocolate/Nougat/Mint/Yellow/Salmon/Rust (**col 360**). Size 4 mm circular needle, 80 cm long; two 7 mm snap buttons in black [by PRYM, item 341162].

**Welt patt:** Row 1: Knit. Row 2: Purl. Rows 3 and 4: Knit. Rep rows 1 – 4 for welt patt.

**Garner selvage:** On every row: Knit first and last st.

**Slip stitch selvage:** On RS row, ktbl first st, sl last st pwise wyib; on WS row, ptbl first st, sl last st pwise wyif.

**Gauge:** 22 sts and 38 rows = 10 x 10 cm in welt patt on size 4 mm needles.

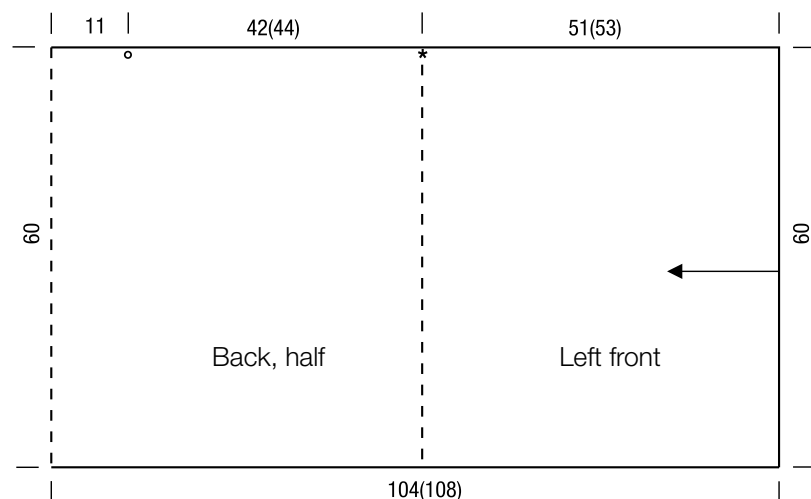
**Back and fronts:** Worked side to side and in one piece. Arrow on schematic shows direction of work. With size 4 mm circular needle cast on 134 sts. Purl 1 WS row. Working first and last st as garner selvage, work welt patt until piece meas 51 (53) cm from cast-on. Place marker at right edge to indicate end of left front [see \* on schematic]. Cont in patt until piece meas 42 (44) cm from first marker. Place 2nd marker at right edge to indicate beg of back neck edge [see o on schematic]. Cont in patt until piece meas 22 cm from 2nd marker. Place 3rd marker at right edge to indicate end of back neck edge. Cont in patt until piece meas 42 (44) cm from 3rd mark-

er. Place 4th marker at right edge to indicate end of back. Cont in patt until piece meas 51 (53) cm from 4th marker, ending with a patt row 2. Bind off all sts kwise.

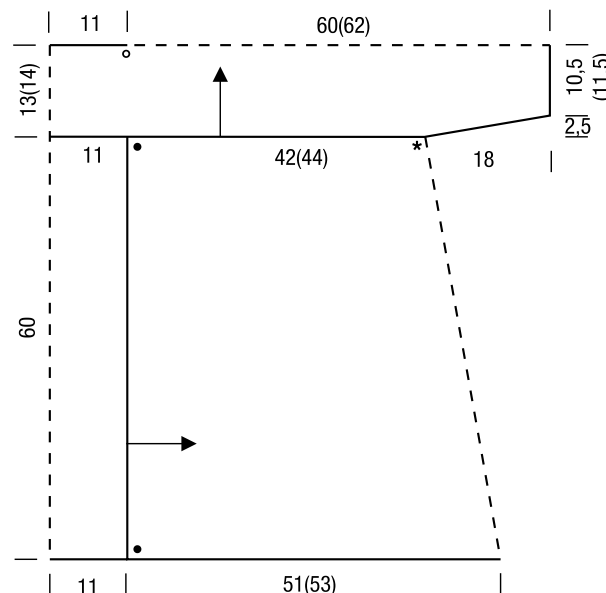
**Sleeves and yoke:** With size 4 mm circular needle cast on 235 (243) sts. Purl 1 WS row. Working first and last st as garner selvage, work welt patt and shape sleeve as foll: Cast on 8 sts at beg of next 10 rows = 315 (323) sts. Working first and last st as slip st selvage, cont in patt for 21 (23) cm. Working first and last st as garner selvage, cont in patt, bind off 8 sts at beg of next 10 rows = 235 (243) sts. Loosely bind off all sts.

**Finishing:** Pin pieces to measurements and block. Leaving 18 cm at each edge open for sleeve seams, sew one long edge of yoke to top edge of back. Leaving 18 cm at each edge open for sleeve seams and center 22 cm open for neck, sew opposite edge of yoke to top edge of fronts, easing fronts in to fit width of yoke. Sew sleeve seams. Referring to • on schematic, sew on snaps.

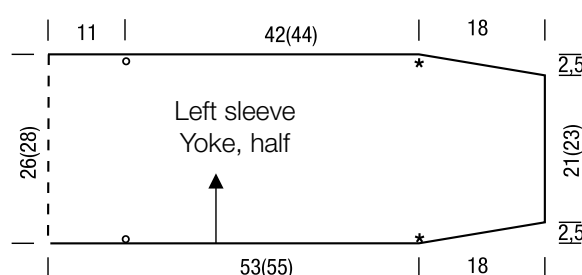
**Schematic 1**



**Schematic 2**



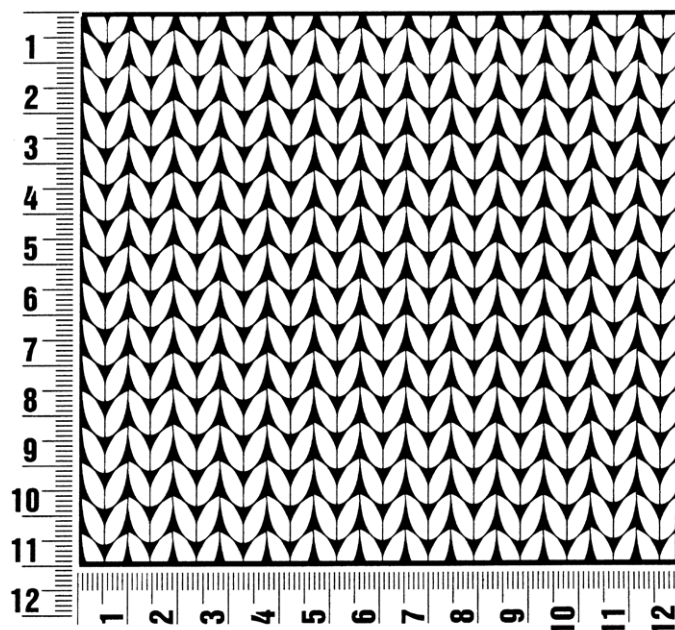
**Schematic 1**



## Gauge Swatch

### Before you begin ...

...make a gauge swatch. Use the recommended needles, yarns and pattern stitch for your gauge swatch. It should measure approx. 12 cm x 12 cm. Cast-on and bind-off rows, as well as selvage stitches should not be included in the measurement. Pin your swatch and block it as you would the finished pieces of the garment. Count stitches and rows over 10 cm. If your gauge swatch is too small, switch to larger needles. If your gauge swatch is too big, switch to smaller needles.



## Abbreviations

**beg** = begin(ning) · **ch** = chain · **cont** = continue · **dec** = decreas(e)(ing) · **inc** = increas(e)(ing) · **k** = knit · **kwise** = as if to knit  
**meas** = measures · **M1L** = lift strand between sts from front to back and knit this strand through the back loop · **M1R** = lift strand between sts from the back and knit this strand through the front loop · **patt** = pattern · **pm** = place marker · **p** = purl  
**pwise** = as if to purl · **rem** = remain(ing) · **rep** = repeat(s) · **rev St st** = reverse stockinette stitch · **rnd(s)** = round(s) · **RS** = right side · **sc** = single crochet · **skp** = slip 1 stitch as if to knit, knit 1 stitch, pass slipped stitch over knitted stitch · **sk2p** = slip 1 stitch as if to knit, knit 2 together, pass slipped stitch over knitted stitch · **s2kp** = slip 2 stitches as if to knit, k 1 stitch, pass slipped stitches over knitted stitch · **sl** = slip · **st(s)** = stitch(es) · **St st** = stockinette stitch · **tbl** = through the back loop · **tog** = together · **wyib** = with yarn in back of work · **wyif** = with yarn in front of work · **WS** = wrong side · **yo(s)** = yarn over(s)

### Publisher's Info

**Publisher:** Lana Grossa GmbH, Gaimersheim, [www.lanagrossa.com](http://www.lanagrossa.com)

**Photographer:** Herberth Dehn