



www.lanagrossa.com

SHAWL · GOMITOLO FELICE

Design 11 – Gomitolo 07

SHAWL · GOMITOLO FELICE

Design 11 – Gomitolo 07



Size 65 x 180 cm

Materials: 300 g of Lana Grossa **Gomitolo Felice** (70% cotton, 30% viscose; 435 m/150 g) in Amber/Curry/Purple/Pistachio/Apricot (**col 715**). Size 6 mm circular needle, 80 cm long.

St st: K on RS, p on WS.

Eyelet rows: Multiple of 2. **Row 1 (RS):** * K2tog, yo; rep from * to end. **Row 2 (WS):** Purl all sts and yos.

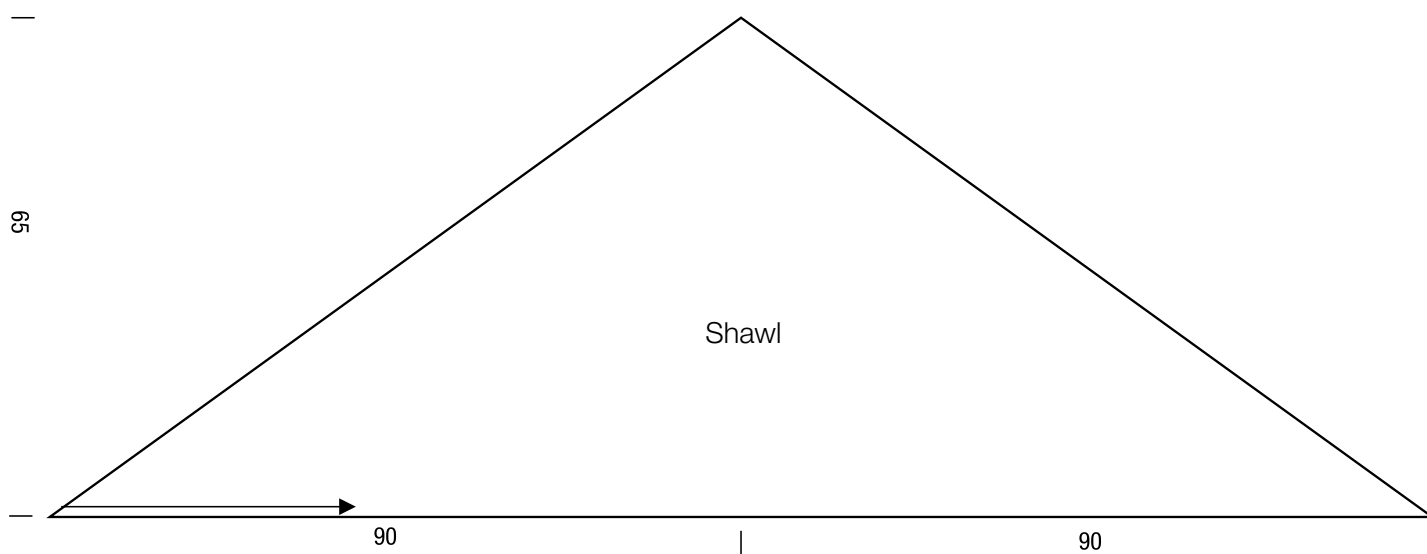
Pattern: Work 10 rows in St st, 2 eyelet rows alternately throughout.

Selvage sts: On RS row, ktbl first st, sl last st pwise wyib; on WS row, ptbl first st, sl last st pwise wyif.

Gauge: 18 sts and 25 rows = 10 x 10 cm in patt on size 6 mm needles.

Shawl: Worked from point to point with incs and decs at left edge. Arrow on schematic shows direction of work. With size 6 mm circular needle cast on 5 sts. Rows 1 and 2: Selvage st, work patt to last st, selvage st. Row 3 (RS inc row): Patt to last 2 sts, M1R, k1, selvage st. Cont in patt, rep RS inc row 112 times = 118 sts. Work 1 WS row. Next RS (dec row): Patt to last 4 sts, k2tog, k1, selvage st. Cont in patt, rep RS dec row 112 times = 5 sts. Bind off all sts.

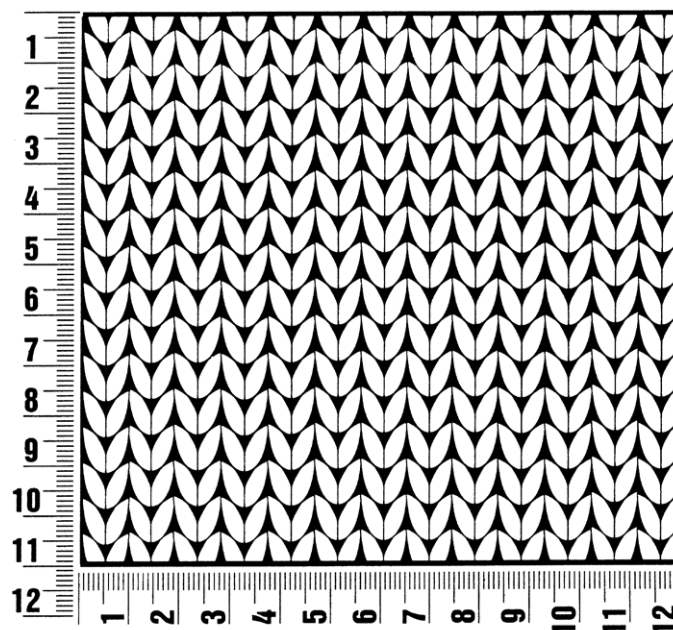
Finishing: Pin piece to measurements and block.



Gauge Swatch

Before you begin ...

...make a gauge swatch. Use the recommended needles, yarns and pattern stitch for your gauge swatch. It should measure approx. 12 cm x 12 cm. Cast-on and bind-off rows, as well as selvage stitches should not be included in the measurement. Pin your swatch and block it as you would the finished pieces of the garment. Count stitches and rows over 10 cm. If your gauge swatch is too small, switch to larger needles. If your gauge swatch is too big, switch to smaller needles.



Abbreviations

beg = begin(ning) · **ch** = chain · **cont** = continue · **dec** = decreas(e)(ing) · **inc** = increas(e)(ing) · **k** = knit · **kwise** = as if to knit
meas = measures · **M1L** = lift strand between sts from front to back and knit this strand through the back loop · **M1R** = lift strand between sts from the back and knit this strand through the front loop · **patt** = pattern · **pm** = place marker · **p** = purl
pwise = as if to purl · **rem** = remain(ing) · **rep** = repeat(s) · **rev St st** = reverse stockinette stitch · **rnd(s)** = round(s) · **RS** = right side · **sc** = single crochet · **skp** = slip 1 stitch as if to knit, knit 1 stitch, pass slipped stitch over knitted stitch · **sk2p** = slip 1 stitch as if to knit, knit 2 together, pass slipped stitch over knitted stitch · **s2kp** = slip 2 stitches as if to knit, k 1 stitch, pass slipped stitches over knitted stitch · **sl** = slip · **st(s)** = stitch(es) · **St st** = stockinette stitch · **tbl** = through the back loop · **tog** = together · **wyib** = with yarn in back of work · **wyif** = with yarn in front of work · **WS** = wrong side · **yo(s)** = yarn over(s)

Publisher's Info

Publisher: Lana Grossa GmbH, Gaimersheim, www.lanagrossa.com

Photographer: Herberth Dehn