



www.lanagrossa.com

CROCHET JACKET · GOMITOLO PAZZO

Design 13 – Gomitolo 07

CROCHET JACKET · GOMITOLO PAZZO

Design 13 – Gomitolo 07



Size 36/38 (40/42, 44)

Instructions are given for first size. Figures in parenthesis refer to larger sizes. When only one figure is given, it applies to all sizes.

Materials: 600 (600, 700) g of Lana Grossa **Gomitolo Pazzo** (52% cotton, 48% acrylic; 260 m/100 g) in Orange/Citrus Yellow/Petrol/Fuchsia Variegated (**col 815**). Size 3.5 and 6 mm crochet hook.

Chart 1: Numbers at right edge of chart indicate RS rows, number at left edge of chart indicates WS row. Work rows 1 – 3 once, then rep rows 2 and 3.

Chart 2: Multiple of 2 + 1 + 3. Numbers at right edge of chart indicate RS rows, number at left edge of chart indicates WS row. Work rows 1 – 3 once, then rep rows 2 and 3.

Main patt: 1 row chart 1, 1 row chart 2, * 7 rows chart 1, 6 rows chart 2, 7 rows chart 1, 4 rows chart 2. Rep 24 rows from * throughout.

9-row front and neckband: Row 1: Ch 1, sc along right front, back neck and left front edge. Rows 2 – 6: Ch 1, sc in each sc across. Row 7: Ch 3, dc in next sc, * sk next 2 sc, [dc, ch 1, dc] in same st as first dc; rep from *, end dc in next 2 sc. Rows 8 and 9: Ch 1, sc in each st across.

Gauge: 12 sts and approx. 8 rows = 10 x 10 cm in main patt with size 6 mm hook.

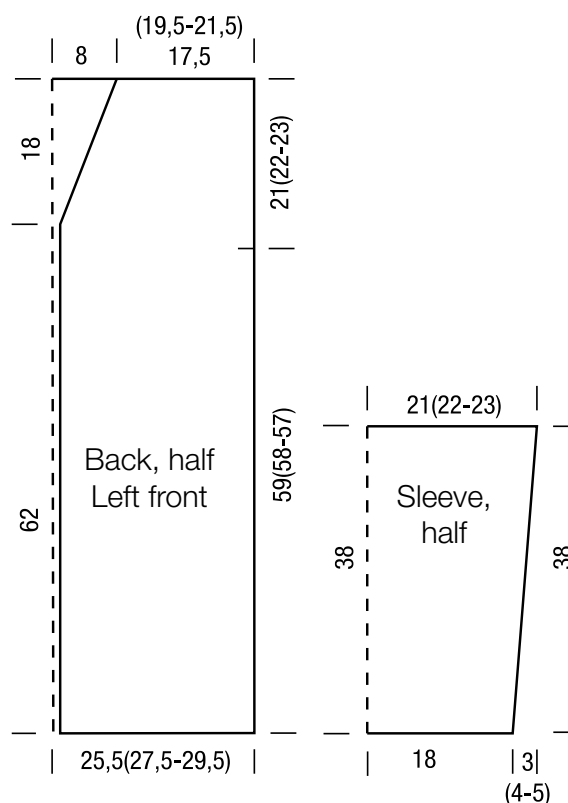
Back: With size 6 mm hook, ch 63 (67, 71) + ch 2. Work main patt for 59 (58, 57) cm. Place marker at each edge to indicate beg of armholes. Cont until main patt has been worked for a total of 65 rows from beg and piece meas 80 cm. Fasten off.

Left front: With size 6 mm hook, ch 31 (33, 35) + ch 2. Work main patt for 59 (58, 57) cm. Place marker at right edge to indicate beg of armhole. Cont until main patt has been worked for a total of 49 rows from beg and piece meas 62 cm. Shape neck: Dec 1 st at neck edge on next row, then alternately every foll row, then every other row 9 times. Work even until main patt has been worked for a total of 65 rows from beg and piece meas 80 cm. Fasten off.

Right front: Work same as left front, reversing all shaping.

Sleeves: With size 6 mm hook, ch 45 + ch 2. Work main patt and shape sleeve as foll: Inc 1 st at each end of 6th row, then every foll 6th row 3 times (then every 5th row 4 times / then every 5th row 2 times, then every 4th row 3 times) = 53 (55, 57) sts. Work even until main patt has been worked for a total of 31 rows from beg and piece meas 38 cm. Fasten off.

Finishing: Pin pieces to measurements and block. Sew shoulder seams. Front and neckband: Sl st-join yarn to bottom corner of right front, work rows 1 – 9 of front and neckband and at same time, on rows 1 – 4, work 2 sc in 1 sc at base of right and left front neck shaping. Fasten off after row 9. Sew on sleeves between markers. Sew side and sleeve seams.



CROCHET JACKET · GOMITOLO PAZZO

Design 13 – Gomitolo 07

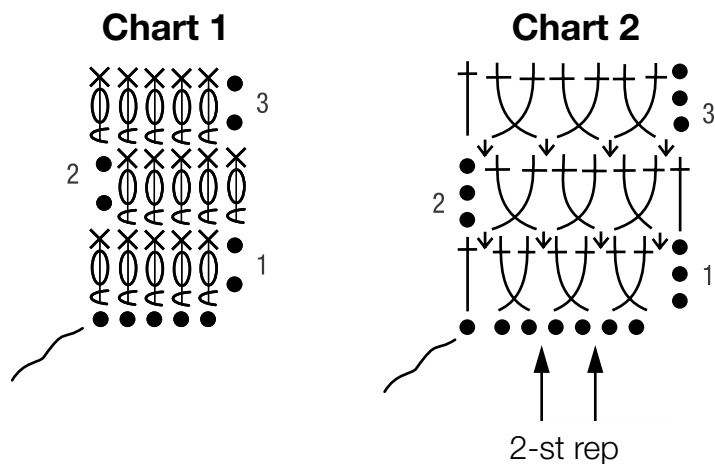


Chart key:

● = chain (ch)

† = double crochet (dc)

† = crossed dc: on row 1, work first dc in 5th ch from hook; work 2nd dc in 4th ch from hook. * Sk next ch, work next dc in next ch; work next dc in skipped ch. Rep from *. On foll rows, work first dc after crossed dc on row below, work 2nd dc before crossed dc on row below

X = wrap yarn over hook, insert hook in indicated st or sp, wrap yarn over hook again and draw through st and yo on hook (= 2 loops on hook). Wrap yarn over hook again, draw through first loop on hook. Wrap yarn over hook again and draw through both loops on hook

Gauge Swatch

Before you begin ...

...make a gauge swatch. Use the recommended needles, yarns and pattern stitch for your gauge swatch. It should measure approx. 12 cm x 12 cm. Cast-on and bind-off rows, as well as selvage stitches should not be included in the measurement. Pin your swatch and block it as you would the finished pieces of the garment. Count stitches and rows over 10 cm. If your gauge swatch is too small, switch to larger needles. If your gauge swatch is too big, switch to smaller needles.



Abbreviations

beg = begin(ning) · **ch** = chain · **cont** = continue · **dec** = decreas(e)(ing) · **inc** = increas(e)(ing) · **k** = knit · **kwise** = as if to knit
meas = measures · **M1L** = lift strand between sts from front to back and knit this strand through the back loop · **M1R** = lift strand between sts from the back and knit this strand through the front loop · **patt** = pattern · **pm** = place marker · **p** = purl
pwise = as if to purl · **rem** = remain(ing) · **rep** = repeat(s) · **rev St st** = reverse stockinette stitch · **rnd(s)** = round(s) · **RS** = right side · **sc** = single crochet · **skp** = slip 1 stitch as if to knit, knit 1 stitch, pass slipped stitch over knitted stitch · **sk2p** = slip 1 stitch as if to knit, knit 2 together, pass slipped stitch over knitted stitch · **s2kp** = slip 2 stitches as if to knit, k 1 stitch, pass slipped stitches over knitted stitch · **sl** = slip · **st(s)** = stitch(es) · **St st** = stockinette stitch · **tbl** = through the back loop · **tog** = together · **wyib** = with yarn in back of work · **wyif** = with yarn in front of work · **WS** = wrong side · **yo(s)** = yarn over(s)

Publisher's Info

Publisher: Lana Grossa GmbH, Gaimersheim, www.lanagrossa.com

Photographer: Herberth Dehn