



[www.lanagrossa.com](http://www.lanagrossa.com)

# SHAWL • GOMITOLO FELICE

Design 15 – Gomitolo 07

# SHAWL · GOMITOLO FELICE

## Design 15 – Gomitolo 07



**Size** 107 x 151 cm

**Materials:** 300 g of Lana Grossa **Gomitolo Felice** (70% cotton, 30% viscose; 435 m/150 g) in Burgundy/Light Red/Orange/Pink/Grey Green/Dark Grey (**col 712**). Size 4 mm circular needle, 80 cm long.

**St st:** K on RS, p on WS.

**Rev St st:** P on RS, k on WS.

**Garter st:** K every row.

**Ridge patt [patt B]:** 2 rows rev St st, \* 5 rows St st, 5 rows rev St st; rep from \* throughout.

**Eyelet patt [patt A]:** Multiple of 4. Work according to chart. Numbers at right edge of chart indicate RS rows; on WS rows purl all sts and yos. Rep rows 1 – 8.

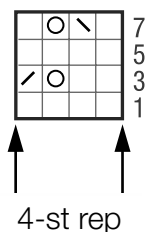
**Slip stitch selvage:** On RS row, ktbl first st, sl last st pwise wyib; on WS row, ptbl first st, sl last st pwise wyif.

**Gauge:** 22 sts and 32 rows = 10 x 10 cm in ridge patt and eyelet patt on size 4 mm needles.

**Shawl:** With size 4 mm circular needle cast on 236 sts. Knit 1 WS row. **Row 1 (RS):** Slip st selvage, work patt B to last 3 sts, k3. **Row 2 (WS):** K3, k2tog or p2tog to keep in patt, work patt B to last st, slip st selvage. Rep rows 1 and 2 throughout and **at same time**, beg patt shift on row 5 as foll: **Row 5 (RS):** Slip st selvage, work patt A over next 4 sts, work patt B to last 3 sts, k3. Work 4 additional sts in patt A at beg of every 6th row until all patt B sts are converted to patt A. **Next row (RS):** Slip st selvage, work patt A to last 5 sts, k2tog, k3. Cont working decs at end of RS rows as established and **at same time**, work WS row dec at beg of every 5th WS row 21 times, then every 7th WS row 1 time and when 4 sts rem on needle, k2tog 2 times. Cut yarn and fasten off last st.

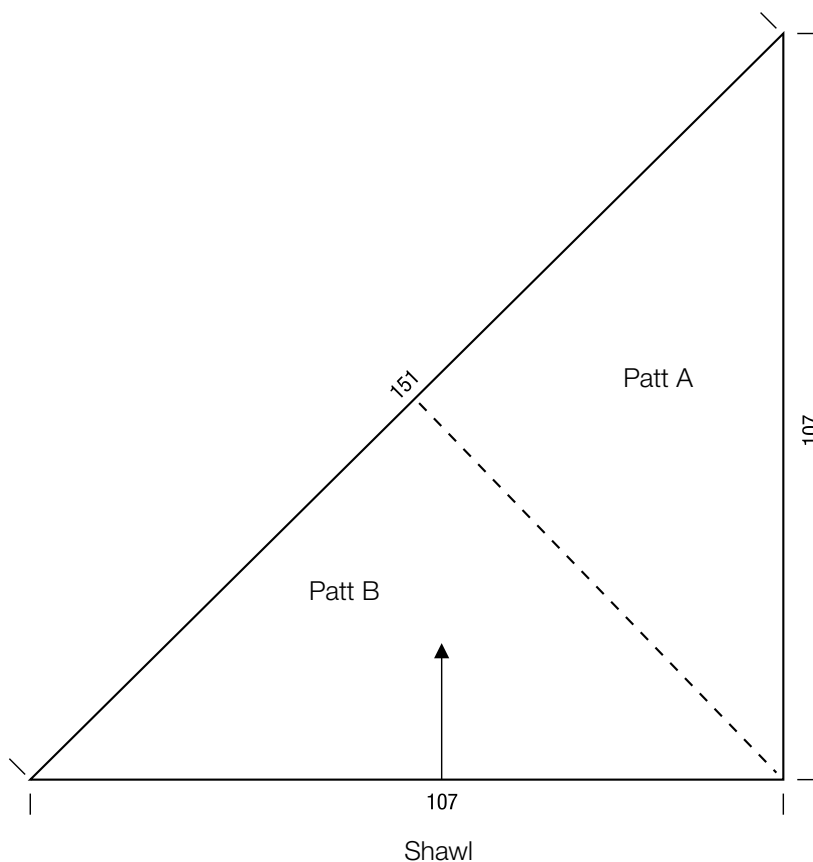
**Finishing:** Pin piece to measurements and block.

**Chart**



### Chart key:

- = k1
- ⊙ = yo
- ▤ = k2tog
- ▤ = skp: sl 1 kwise, k1, pass slipped st over knitted st





## Gauge Swatch

### Before you begin ...

...make a gauge swatch. Use the recommended needles, yarns and pattern stitch for your gauge swatch. It should measure approx. 12 cm x 12 cm. Cast-on and bind-off rows, as well as selvage stitches should not be included in the measurement. Pin your swatch and block it as you would the finished pieces of the garment. Count stitches and rows over 10 cm. If your gauge swatch is too small, switch to larger needles. If your gauge swatch is too big, switch to smaller needles.



## Abbreviations

**beg** = begin(ning) · **ch** = chain · **cont** = continue · **dec** = decreas(e)(ing) · **inc** = increas(e)(ing) · **k** = knit · **kwise** = as if to knit  
**meas** = measures · **M1L** = lift strand between sts from front to back and knit this strand through the back loop · **M1R** = lift strand between sts from the back and knit this strand through the front loop · **patt** = pattern · **pm** = place marker · **p** = purl  
**pwise** = as if to purl · **rem** = remain(ing) · **rep** = repeat(s) · **rev St st** = reverse stockinette stitch · **rnd(s)** = round(s) · **RS** = right side · **sc** = single crochet · **skp** = slip 1 stitch as if to knit, knit 1 stitch, pass slipped stitch over knitted stitch · **sk2p** = slip 1 stitch as if to knit, knit 2 together, pass slipped stitch over knitted stitch · **s2kp** = slip 2 stitches as if to knit, k 1 stitch, pass slipped stitches over knitted stitch · **sl** = slip · **st(s)** = stitch(es) · **St st** = stockinette stitch · **tbl** = through the back loop · **tog** = together · **wyib** = with yarn in back of work · **wyif** = with yarn in front of work · **WS** = wrong side · **yo(s)** = yarn over(s)

### Publisher's Info

**Publisher:** Lana Grossa GmbH, Gaimersheim, [www.lanagrossa.com](http://www.lanagrossa.com)

**Photographer:** Herberth Dehn