



CROCHET SLEEPING BAG · BABY SOFT

Design 06 – Infanti Edition 02

CROCHET SLEEPING BAG · BABY SOFT

Design 06 – Infanti Edition 02



Size 42/48 (50 – 80)

Instructions are given for smaller size. Figure in parenthesis refers to larger size. When only one figure is given, it applies to both sizes.

Materials: 150 (200) g of Lana Grossa **Baby Soft** (60% polyamide, 40% cotton; 150 m/50 g) in Mint Turquoise (**col 28**), 100 (150) g in Pale Grey (**col 12**) and 50 (100) g each in Jeans (**col 10**), Apricot (**col 26**) and Pink (**col 13**). Size 5 mm crochet hook.

Crochet patt: Multiple of 2. Work according to chart. Work to patt rep, work 2 sts between arrows for patt rep, work to end of chart. Work rows 1 – 3 once, then rep rows 2 and 3. Sts that meet at the bottom are all worked in one st. Sts that meet at the top show the number of sts to be decreased.

Stripe patt: Work 2 rows each in Jeans, Apricot, Pale Grey, Mint Turquoise, Pink alternately throughout.

Gauge: 16 sts and 11 rows = 10 x 10 cm in crochet patt with size 5 mm hook.

Sleeping bag: With size 5 mm hook and Jeans, ch 62 (70) + ch 3. Follow chart, work stripe patt and work shaping as foll: Inc 2 sts at each end of next 3 rows, 1 st at each end of next 26 rows ([1 st at each end of next 13 rows, 1 st at each end of every alt row] 2 times, 1 st at each end of next 9 rows). Work even until piece meas 29 (38) cm from beg. Dec at each end of every row [2 sts 3 times, 1 st 1 time] 7 times, 2 sts 6 times ([2 sts 3 times, 1 st 1 time] 9 times, 2 sts 1 time, 1 st 5 times). Work even until piece meas 60 (76) cm from beg. Fasten off.

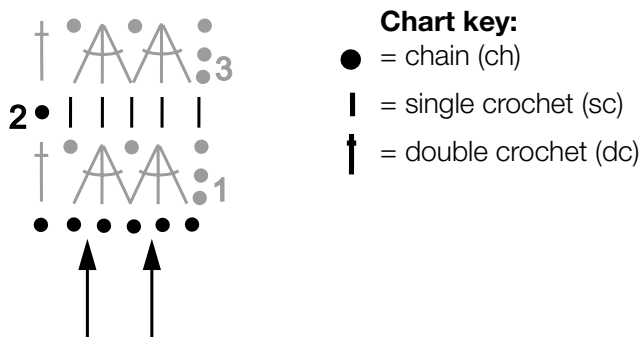
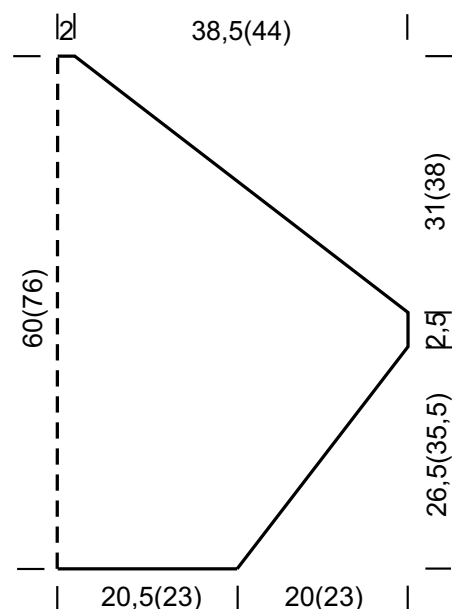
Bottom section: With size 5 mm hook and Mint Turquoise, ch 48 (58) + ch 3. Follow chart for 23 (28) cm. Fasten off.

Hood: With size 5 mm hook and Mint Turquoise, ch 69 (73) + ch 3. Follow chart and work shaping as foll: Dec at each end of every row 2 sts 2 times, 1 st 1 time, [2 sts 3 times, 1 st 1 time] 2 times, 2 sts 6 times (2 sts 2 times, 1 st 1 time, [2 sts 3 times, 1 st 1 time] 3 times, 2 sts 1 time, 1 st 5 times). Work even until piece meas 15.5 (19) cm from beg. Fasten off.

Short band: With size 5 mm hook and Pale Grey crochet a 47 (53) cm long chain. Work 2 rows sc. Fasten off.

Long band: With size 5 mm hook and Pale Grey crochet a 57 (63) cm long chain. Work 2 rows sc. Fasten off.

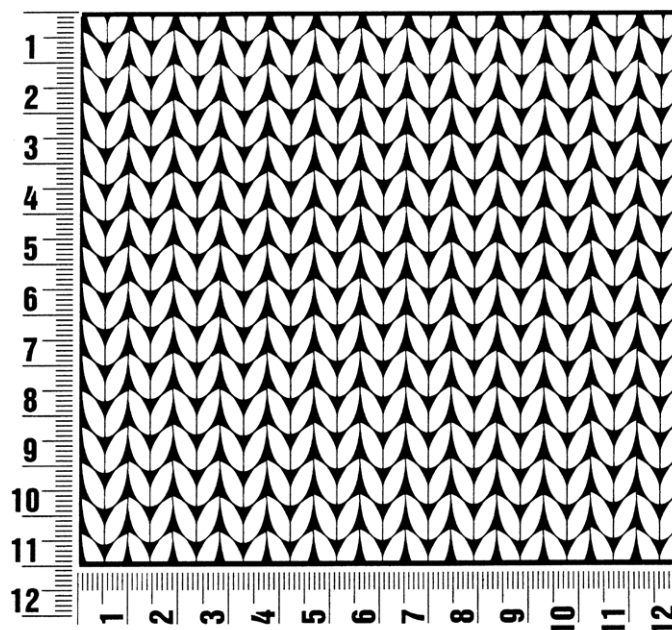
Finishing: Hood trim: With size 5 mm hook and Pale Grey, sc along bottom edge of hood, ending with a multiple of 5. Next row: Ch 1, * sc in next sc, make bobble = 5 sc in next sc, turn, sc in each sc, turn, sc5tog, sc in next 3 sc; rep from * to end. Fasten off. Bottom section trim: Work same as hood trim along top edge of bottom section. Place hood on top of bag and with top and side edges matching, sew hood to bag. Place bottom section on top of bag and with bottom and side edges matching, sew bottom section to bag. With size 5 mm hook and Pale Grey, work trim around entire edge of bag: Rnd 1: Sc around, ending with a multiple of 5 and working through both thicknesses along hood and bottom section. Next rnd: Ch 1, * sc in next sc, make bobble = 5 sc in next sc, turn, sc in each sc, turn, sc5tog, sc in next 3 sc; rep from *, sl st in first sc to join. Fasten off. Sew short band to top corner at straight left side edge. Sew on long band 28 (31) cm in from right side edge and at same height as short band.



Gauge Swatch

Before you begin ...

...make a gauge swatch. Use the recommended needles, yarns and pattern stitch for your gauge swatch. It should measure approx. 12 cm x 12 cm. Cast-on and bind-off rows, as well as selvage stitches should not be included in the measurement. Pin your swatch and block it as you would the finished pieces of the garment. Count stitches and rows over 10 cm. If your gauge swatch is too small, switch to larger needles. If your gauge swatch is too big, switch to smaller needles.



Abbreviations

beg = begin(ning) · **ch** = chain · **cont** = continue · **dec** = decreas(e)(ing) · **inc** = increas(e)(ing) · **k** = knit · **kwise** = as if to knit
meas = measures · **M1L** = lift strand between sts from front to back and knit this strand through the back loop · **M1R** = lift strand between sts from the back and knit this strand through the front loop · **patt** = pattern · **pm** = place marker · **p** = purl
pwise = as if to purl · **rem** = remain(ing) · **rep** = repeat(s) · **rev St st** = reverse stockinette stitch · **rnd(s)** = round(s) · **RS** = right side · **sc** = single crochet · **skp** = slip 1 stitch as if to knit, knit 1 stitch, pass slipped stitch over knitted stitch · **sk2p** = slip 1 stitch as if to knit, knit 2 together, pass slipped stitch over knitted stitch · **s2kp** = slip 2 stitches as if to knit, k 1 stitch, pass slipped stitches over knitted stitch · **sl** = slip · **st(s)** = stitch(es) · **St st** = stockinette stitch · **tbl** = through the back loop · **tog** = together · **wyib** = with yarn in back of work · **wyif** = with yarn in front of work · **WS** = wrong side · **yo(s)** = yarn over(s)

Publisher's Info

Publisher: Lana Grossa GmbH, Gaimersheim, www.lanagrossa.com

Photographer: Dominique Sudre