



www.lanagrossa.com



SHAWL · ALLORA HAND-DYED

Design 02 – Hand-dyed 02

SHAWL · ALLORA HAND-DYED

Design 02 – Hand-dyed 02



Size 90 x 180 cm

Materials: Lana Grossa **Allora hand-dyed** (76% cotton, 14% superfine Merino wool, 10% baby alpaca; 300 m/50 g).

Version 1: 100 g each in Kismis (**col 260**), Padma (**col 245**) and Anjeer (**col 261**).

Version 2: 100 g each in Angoor (**col 256**), Jamun (**col 257**) and Tulsī (**col 252**).

Size 4 mm circular needle, 100 cm long; size 3.5 mm crochet hook for fringe.

St st: K on RS, p on WS.

Drop stitch patt: Rows 1 – 4: Knit. Row 5 (RS): * Yo, k1; rep from *. Row 6 (WS): Purl all sts, drop all yos. Rows 7 – 10: Knit.

Star stitch: Multiple of 6 + 3. Row 1: Knit. Row 2 and all foll WS rows: Purl. Row 3: K3, * (p3tog, k3tog, p3tog) into same 3 sts tog, k3; rep from *. Row 7: * (P3tog, k3tog, p3tog) into same 3 sts tog, k3; rep from * to last 3 sts, (p3tog, k3tog, p3tog) into same 3 sts tog. Rep rows 1 – 8 for star st. NOTE: To keep stitch count correct, work k1, k2, k4 or k5 as necessary in place of k3.

Two-stitch selvage: On RS row, sl 1 pwise wyib, k1, patt to last 2 sts, k1, sl 1 pwise wyib. On WS row, p1, sl 1 pwise wyif, patt to last 2 sts, sl 1 pwise wyif, p1.

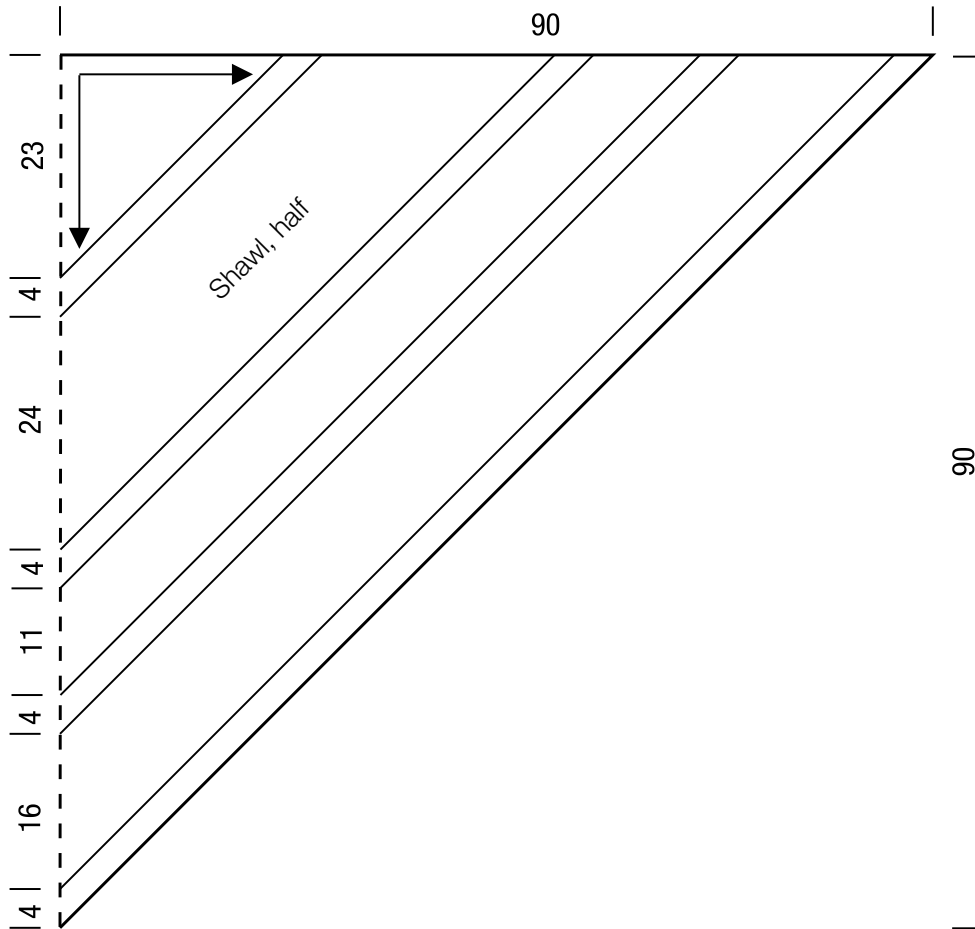
Gauge: 23 sts and 32 rows = 10 x 10 cm in star st on size 4 mm needles.

Shawl: With size 4 mm circular needle and Kismis col 260 for version 1 or Angoor col 256 for version 2, cast on 7 sts. Next row (WS): Two-stitch selvage, p3, two-stitch selvage. Next row (RS): Two-stitch selvage, M1R, k1, M1R, k1 and mark for center st, M1R, k1, M1R, two-stitch selvage = 4 sts increased and 11 sts total. Maintaining two-stitch selvage, work in St st for 9 more rows, increasing 1 st after two-stitch selvage, 1 st before and after center st and 1 st before two-stitch selvage on every RS row. Maintain two-stitch selvage and work RS incs throughout. Work rows 3 – 8 of star st patt, then work rows 1 – 8 five more times. Work in St st for 2 rows. With Padma col 245 for version 1 or Jamun col 257 for version 2, work drop st patt for 10 rows. With Kismis col 260 for version 1 or Angoor col 256 for version 2, work star stitch for 52 rows, then work in St st for 2 rows. With Padma col 245 for version 1 or Jamun col 257 for version 2, work drop st patt for 10 rows, St st for 2 rows, star st for 20 rows, St st for 2 rows, drop st patt for 10 rows. With Anjeer col 261 for version 1 or Tulsī (col 252) for version 2, work star st for 40 rows, work drop st patt for 10 rows. Loosely bind off all sts.

Finishing: Pin piece to measurements and block. **Fringe (version 1 only):** Cut 261 strands of Anjeer col 261, each strand 30 cm long. Insert crochet hook into fabric from WS, fold 4 strands of yarn in half to form a loop, draw loop through fabric, then draw yarn ends through loop and tighten. Attach 68 fringe along each side edge, 1 fringe in point. Trim fringe to 14 cm.

SHAWL · ALLORA HAND-DYED

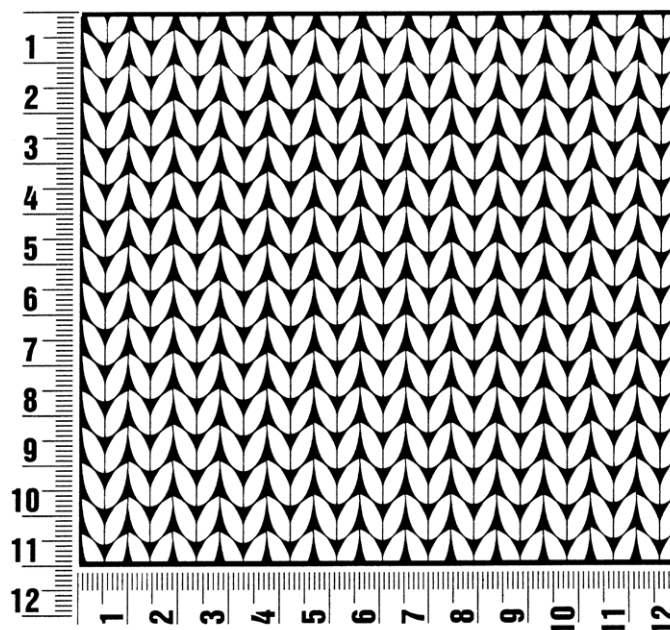
Design 02 – Hand-dyed 02



Gauge Swatch

Before you begin ...

...make a gauge swatch. Use the recommended needles, yarns and pattern stitch for your gauge swatch. It should measure approx. 12 cm x 12 cm. Cast-on and bind-off rows, as well as selvage stitches should not be included in the measurement. Pin your swatch and block it as you would the finished pieces of the garment. Count stitches and rows over 10 cm. If your gauge swatch is too small, switch to larger needles. If your gauge swatch is too big, switch to smaller needles.



Abbreviations

beg = begin(ning) · **ch** = chain · **cont** = continue · **dec** = decreas(e)(ing) · **inc** = increas(e)(ing) · **k** = knit · **kwise** = as if to knit
meas = measures · **M1L** = lift strand between sts from front to back and knit this strand through the back loop · **M1R** = lift strand between sts from the back and knit this strand through the front loop · **patt** = pattern · **pm** = place marker · **p** = purl
pwise = as if to purl · **rem** = remain(ing) · **rep** = repeat(s) · **rev St st** = reverse stockinette stitch · **rnd(s)** = round(s) · **RS** = right side · **sc** = single crochet · **skp** = slip 1 stitch as if to knit, knit 1 stitch, pass slipped stitch over knitted stitch · **sk2p** = slip 1 stitch as if to knit, knit 2 together, pass slipped stitch over knitted stitch · **s2kp** = slip 2 stitches as if to knit, k 1 stitch, pass slipped stitches over knitted stitch · **sl** = slip · **st(s)** = stitch(es) · **St st** = stockinette stitch · **tbl** = through the back loop · **tog** = together · **wyib** = with yarn in back of work · **wyif** = with yarn in front of work · **WS** = wrong side · **yo(s)** = yarn over(s)

Publisher's Info

Publisher: Lana Grossa GmbH, Gaimersheim, www.lanagrossa.com

Photographer: Wilfried Wulff, www.wilfriedwulff.com