



www.lanagrossa.com

TOP · ALLORA HAND-DYED
Design 23 – Hand-dyed 02

TOP · ALLORA HAND-DYED

Design 23 – Hand-dyed 02



Size 36/38 (40/42, 44)

Instructions are given for first size. Figures in parenthesis refer to larger sizes. When only one figure is given, it applies to all sizes.

Materials: 200 (250, 250) g of Lana Grossa **Allora hand-dyed** (76% cotton, 14% superfine Merino wool, 10% baby alpaca; 300 m/50 g) in Badaam (col 259). Size 3 and 4 mm needles; size 3 mm circular needle, 40 cm long; size 3.5 mm crochet hook.

Rib patt: Multiple of 2 + 1 + 2 selvage sts. **Row 1 (RS):** Selvage st, * p1, k1tbl; rep from * to last 2 sts, p1, selvage st. **Row 2 (WS):** Selvage st, * k1, p1tbl; rep from * to last 2 sts, k1, selvage st. Rep rows 1 and 2 for rib patt.

Main patt: Multiple of 5 + 2. Work according to chart. Number at right edge of chart indicates RS row, number at left edge of chart indicates WS row. Rep rows 1 and 2 for main patt.

Gauge: 31 sts and 37 rows = 10 x 10 cm in main patt on size 4 mm needles.

Back: With size 3 mm needles cast on 143 (157, 173) sts. Beg and end with a WS row, work in rib patt until piece meas 7 cm from cast-on, increasing 1 (2, 1) st(s) at center of last WS row = 144 (159, 174) sts. Change to size 4 mm needles. Next row (RS): Selvage st; work chart over next 142 (157, 172) sts = work patt rep 28 (31, 34) times, work to end of chart; selvage st. NOTE: Selvage sts are not included on chart. Cont to foll chart until piece meas 36 cm from cast-on, ending with a WS row. Shape armholes: Bind off 4 (4, 5) sts at beg of next 2 rows, 3 sts at beg of next 2 (2, 4) rows, 2 sts at beg of next 2 rows, 1 st at beg of next 8 rows, [work 2 rows even, bind off 1 st at beg of next 2 rows] 2 (2, 3) times = 114 (129, 134) sts. Work even until armhole meas 25 (26, 27) cm, ending with a WS row. Shape shoulders and neck: At each shoulder edge bind off 6 (8, 9) sts 1 time, then 7 sts 3 times (then 8 sts 1 time, 9 sts 2 times / then 9 sts 2 times, 10 sts 1 time). **At same time**, when working 2nd RS shoulder bind-off row, work neck as foll: Bind off center 58 (59, 58) sts. Working each side separately, bind off 1 st at each neck edge 1 time. No sts rem.

Front: Work same as back until piece meas 55.5 (56.5, 57.5) cm from cast-on, ending with a WS row. Shape neck: Next row (RS): Bind off center 16 (17, 16) sts. Working each side separately, bind off 6 sts at each neck edge 1 time, 4 sts 1 time, 3 sts 1 time, 2 sts 2 times, 1 st 3 times, 1 st every 4th row 2 times and when same length as back to shoulders, shape shoulders same as for back.

Finishing: Pin pieces to measurements and block. Sew shoulder and side seams. **Neckband:** With size 3.5 mm crochet hook, sc around neck edge, ending with 115 (117, 115) sc: 64 (65, 64) sc along front neck and 51 (52, 51) sc along back neck edge. Fasten off. With size 3 mm circular needle and RS facing, pick up and k in each sc as foll: * 1 st in next sc, 2 sts in next sc; rep from * around = 172 (175, 172) sts. Place beg of rnd marker and join for working in rnds. Rnd 1: K1tbl, p1 around, decreasing 0 (3, 0) sts evenly around = 172 sts. Cont in rib patt until band meas 7.5 cm. Loosely bind off all sts in rib. Fold band in half to WS and sew down. **Armhole bands:** With size 3.5 mm crochet hook, sc around armhole edge, ending with 110 (116, 124) sc: 55 (58, 61) sc along front and 55 (58, 62) sc along back armhole edge. Fasten off. With size 3 mm circular needle and RS facing, pick up and k in each sc as foll: * 1 st in next sc, 2 sts in next sc; rep from * around = 165 (174, 186) sts. Place beg of rnd marker and join for working in rnds. Rnd 1: K1tbl, p1 around, decreasing 1 (0, 2) st(s) = 164 (174, 184) sts. Cont in rib patt until band meas 7.5 cm. Loosely bind off all sts in rib. Fold band in half to WS and sew down.

Chart

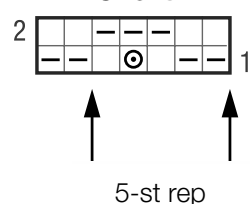
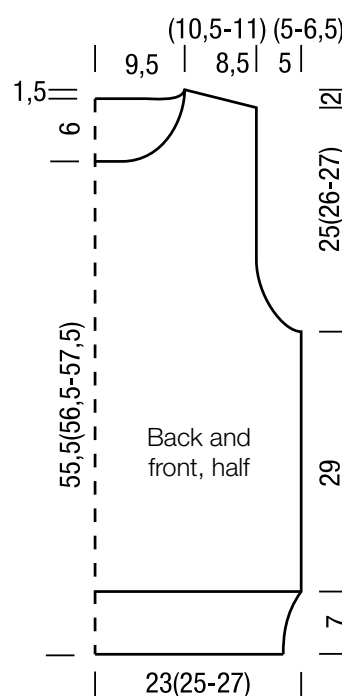


Chart key:

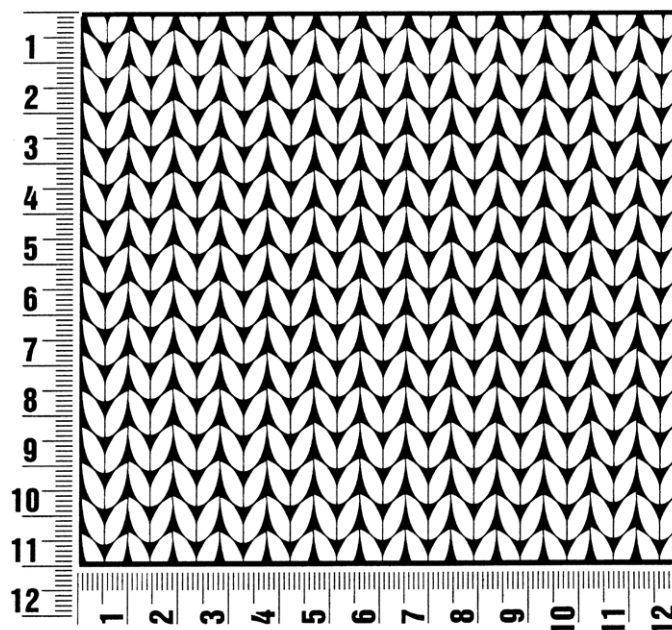
- = k1
- ▬ = p1
- ⊙ = sl 1 pwise wyib



Gauge Swatch

Before you begin ...

...make a gauge swatch. Use the recommended needles, yarns and pattern stitch for your gauge swatch. It should measure approx. 12 cm x 12 cm. Cast-on and bind-off rows, as well as selvage stitches should not be included in the measurement. Pin your swatch and block it as you would the finished pieces of the garment. Count stitches and rows over 10 cm. If your gauge swatch is too small, switch to larger needles. If your gauge swatch is too big, switch to smaller needles.



Abbreviations

beg = begin(ning) · **ch** = chain · **cont** = continue · **dec** = decreas(e)(ing) · **inc** = increas(e)(ing) · **k** = knit · **kwise** = as if to knit
meas = measures · **M1L** = lift strand between sts from front to back and knit this strand through the back loop · **M1R** = lift strand between sts from the back and knit this strand through the front loop · **patt** = pattern · **pm** = place marker · **p** = purl
pwise = as if to purl · **rem** = remain(ing) · **rep** = repeat(s) · **rev St st** = reverse stockinette stitch · **rnd(s)** = round(s) · **RS** = right side · **sc** = single crochet · **skp** = slip 1 stitch as if to knit, knit 1 stitch, pass slipped stitch over knitted stitch · **sk2p** = slip 1 stitch as if to knit, knit 2 together, pass slipped stitch over knitted stitch · **s2kp** = slip 2 stitches as if to knit, k 1 stitch, pass slipped stitches over knitted stitch · **sl** = slip · **st(s)** = stitch(es) · **St st** = stockinette stitch · **tbl** = through the back loop · **tog** = together · **wyib** = with yarn in back of work · **wyif** = with yarn in front of work · **WS** = wrong side · **yo(s)** = yarn over(s)

Publisher's Info

Publisher: Lana Grossa GmbH, Gaimersheim, www.lanagrossa.com

Photographer: Wilfried Wulff, www.wilfriedwulff.com