



www.lanagrossa.com

TOP · PIMA

Design 01 – Häkeln 03

TOP · PIMA

Design 01 – Häkeln 03



Size 36/38 (40/42, 44)

Instructions are given for first size. Figures in parenthesis refer to larger sizes. When only one figure is given, it applies to all sizes.

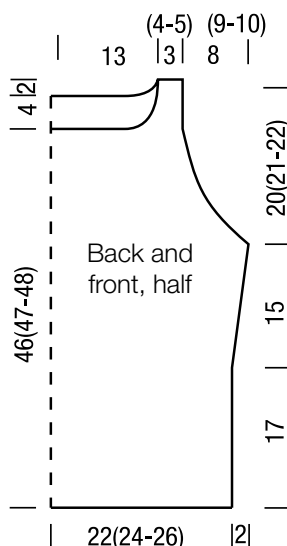
Materials: 300 (350, 400) g of Lana Grossa **Pima** (100% Pima cotton; 125 m/50 g) in Light Grey Blue (col 34). Size 3.5 and 4 mm crochet hook.

Diamond patt: Multiple of 21 + 2 + 3. Work according to chart. Numbers at right edge of chart indicate RS rows, numbers at left edge of chart indicate WS rows. Work rows 1 – 19 once, then rep rows 2 – 19.

Gauge: 19 sts and 9 rows = 10 x 10 cm in diamond patt with size 4 mm hook.

Back: With size 4 mm hook, ch 86 (92, 98) + ch 3. Work chart: Work to patt rep, work patt rep 4 times, work to end of chart (work last 3 sts of patt rep, work patt rep 4 times, work first 5 sts of patt rep / work last 6 sts of patt rep, work patt rep 4 times, work first 8 sts of patt rep). Cont to foll chart until piece meas 17 cm from beg. Shape sides: Inc 1 st at each end of next row, then every 4th row 2 times = 92 (98, 104) sts. Work increased sts in dc. Work even until piece meas 32 cm from beg. Shape armholes: Leave 3 (3, 4) sts unworked at beg and end of next row, 2 sts at beg and end of next row. Dec 1 st at each end of next 10 (12, 13) rows. Work even until piece meas 50 (51, 52) cm from beg. Shape neck: Leave center 48 sts unworked. Working each side separately, dec 1 st at each neck edge 1 time = 6 (7, 8) sts rem each side, and when piece meas 52 (53, 54) cm from cast-on, fasten off.

Front: Work same as back until piece meas 46 (47, 48) cm from beg. Shape neck: Leave center 40 sts unworked. Working each side separately, dec 2 sts at each neck edge 1 time, 1 st 3 times and when same length as back to shoulders, fasten off.



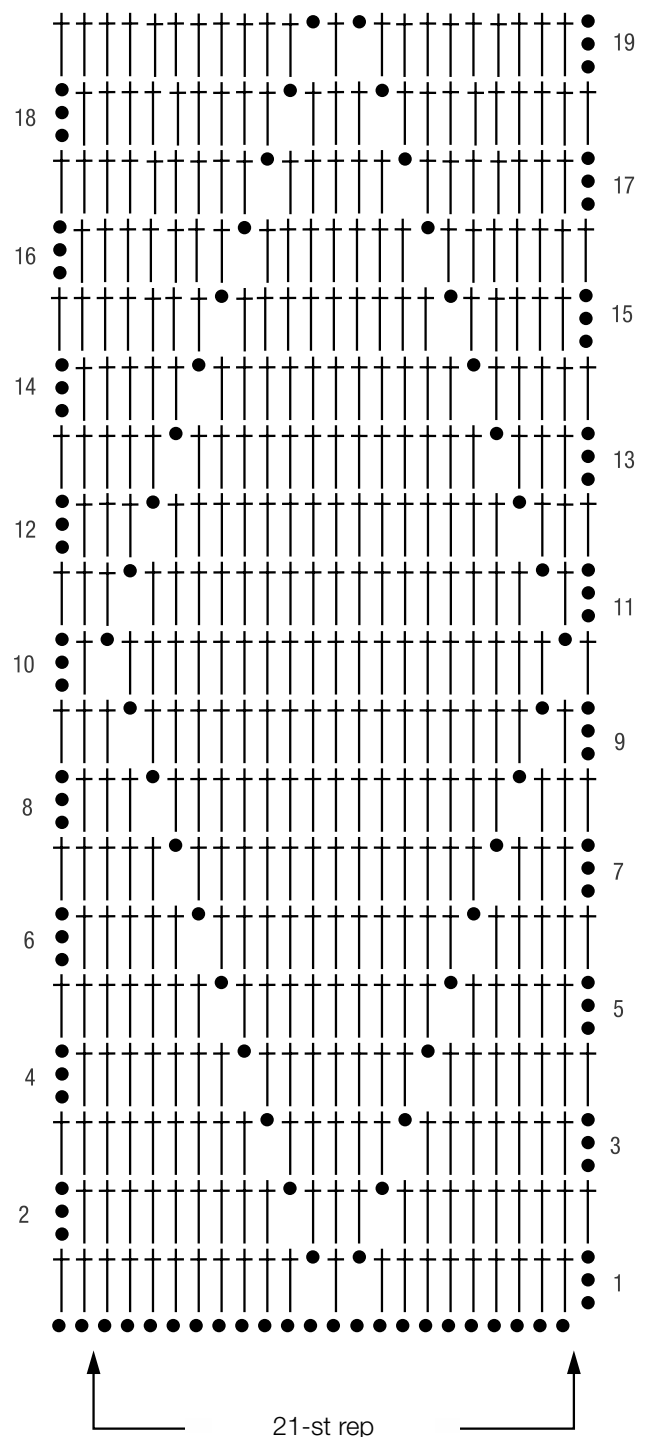
Finishing: Pin pieces to measurements and block. Sew shoulder and side seams. **Neck and armhole bands:** With size 3.5 mm hook work 1 rnd sc, 1 rnd rev sc [work sc from left to right] around neck edge and around each armhole edge.

Chart key:

● = chain (ch)

† = double crochet (dc)

Chart



Gauge Swatch

Before you begin ...

...make a gauge swatch. Use the recommended needles, yarns and pattern stitch for your gauge swatch. It should measure approx. 12 cm x 12 cm. Cast-on and bind-off rows, as well as selvage stitches should not be included in the measurement. Pin your swatch and block it as you would the finished pieces of the garment. Count stitches and rows over 10 cm. If your gauge swatch is too small, switch to larger needles. If your gauge swatch is too big, switch to smaller needles.



Abbreviations

beg = begin(ning) · **ch** = chain · **cont** = continue · **dec** = decreas(e)(ing) · **inc** = increas(e)(ing) · **k** = knit · **kwise** = as if to knit
meas = measures · **M1L** = lift strand between sts from front to back and knit this strand through the back loop · **M1R** = lift strand between sts from the back and knit this strand through the front loop · **patt** = pattern · **pm** = place marker · **p** = purl
pwise = as if to purl · **rem** = remain(ing) · **rep** = repeat(s) · **rev St st** = reverse stockinette stitch · **rnd(s)** = round(s) · **RS** = right side · **sc** = single crochet · **skp** = slip 1 stitch as if to knit, knit 1 stitch, pass slipped stitch over knitted stitch · **sk2p** = slip 1 stitch as if to knit, knit 2 together, pass slipped stitch over knitted stitch · **s2kp** = slip 2 stitches as if to knit, k 1 stitch, pass slipped stitches over knitted stitch · **sl** = slip · **st(s)** = stitch(es) · **St st** = stockinette stitch · **tbl** = through the back loop · **tog** = together · **wyib** = with yarn in back of work · **wyif** = with yarn in front of work · **WS** = wrong side · **yo(s)** = yarn over(s)

Publisher's Info

Publisher: Lana Grossa GmbH, Gaimersheim, www.lanagrossa.com
Photographer: Nicolas Olonetzky, www.olonetzky.com