



www.lanagrossa.com



COAT · TREFILI

Design 04 – Häkeln 03

COAT · TREFILI

Design 04 – Häkeln 03



Size 36/38 (40/42, 44)

Instructions are given for first size. Figures in parenthesis refer to larger sizes. When only one figure is given, it applies to all sizes.

Materials: 600 (650, 700) g of Lana Grossa **Trefili** (62% cotton, 26% viscose, 12% linen; 160 m/50 g) in Ice Blue/Grey Blue (**col 17**). Size 4 mm crochet hook.

Main patt: Multiple of 4 + 2 + 1. Work according to chart. Numbers at right edge of chart indicate RS rows, number at left edge of chart indicates WS row. Work rows 1 – 3 once, then rep rows 2 and 3.

Gauge: 27 sts and 12 rows = 10 x 10 cm in main patt with size 4 mm hook.

Back: With size 4 mm hook, ch 130 (142, 154) + ch 1. Work row 1 of chart: Work to patt rep, work patt rep 31 (34, 37) times, work to end of chart. Cont to foll chart until piece meas 92 (91, 90) cm from beg. Shape armholes: Leave 12 sts = 3 patt reps unworked at beg and end of next row = 26 (29, 32) patt reps remain. Work even until piece meas 106 cm from beg. Shape neck: Leave center 38 sts unworked. Working each side separately, dec 2 sts at each neck edge 2 times and when piece meas 108 cm from beg, fasten off after a chart row 3.

Left front: With size 4 mm hook, ch 66 (70, 74) + ch 1. Work row 1 of chart: Work to patt rep, work patt rep 15 (16, 17) times, work to end of chart. Cont to foll chart until piece meas 92 (91, 90) cm from beg. Shape armhole: At right edge, leave 12 sts = 3 patt reps unworked 1 time = 13 (14, 15) patt reps remain. Work even until piece meas 100 cm from beg, ending

with a chart row 3. Shape neck: At left edge, leave 12 sts = 3 patt reps unworked 1 time, then dec every row 2 sts 4 times, 1 st 4 times = 3 patt reps decreased. Work even until armhole meas 16 (17, 18) cm, ending with a chart row 3. Fasten off.

Right front: Work same as left front, reversing all shaping.

Sleeves: With size 4 mm hook, ch 66 + ch 1. Work row 1 of chart: Work to patt rep, work patt rep 15 times, work to end of chart. Cont to foll chart until piece meas 12 cm from beg. Shape sleeve: Inc 1 st at each end of next row, then every 4th row 11 times (then every 4th row 11 times, then every alt row 2 times / then every alt 2nd and 4th row 15 times) = 90 (94, 98) sts. Work even until piece meas 56 cm from beg, ending with a chart row 3. Fasten off.

Finishing: Pin pieces to measurements and block. Sew shoulder seams. Set sleeves into armholes, sewing top 4.5 cm to bottom edges of armhole shaping. Sew side and sleeve seams. With size 4 mm hook, work 2 rows sc along front and neck edges, 3 sc in corner at left and right front neck shaping. Fasten off.

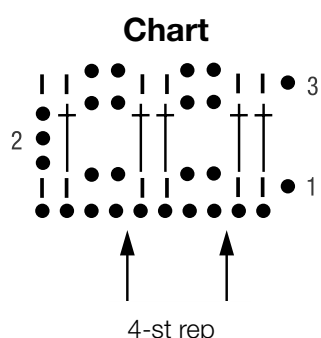
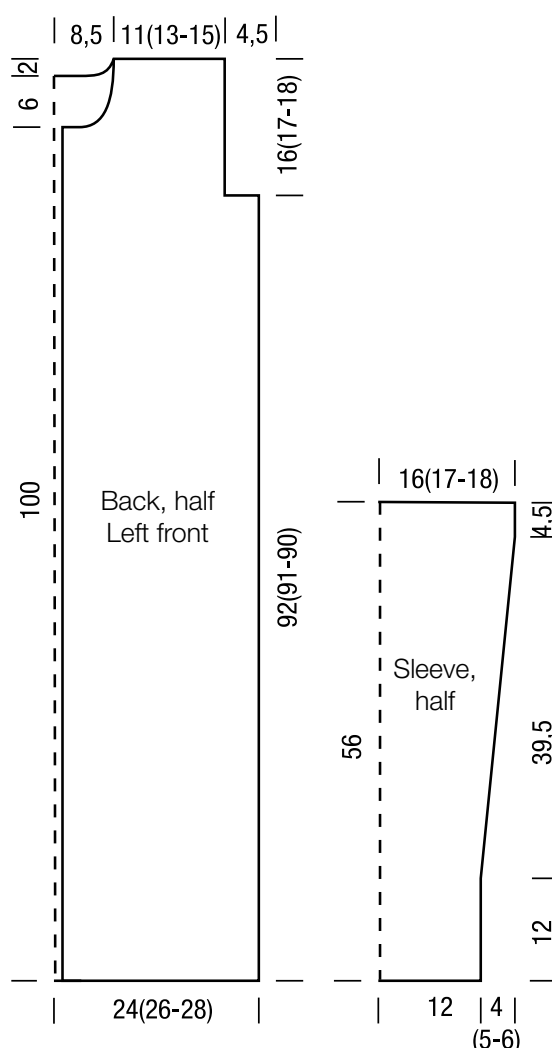


Chart key:

- = chain (ch)
- ┆ = single crochet (sc)
- ⊕ = double crochet (dc)



Gauge Swatch

Before you begin ...

...make a gauge swatch. Use the recommended needles, yarns and pattern stitch for your gauge swatch. It should measure approx. 12 cm x 12 cm. Cast-on and bind-off rows, as well as selvage stitches should not be included in the measurement. Pin your swatch and block it as you would the finished pieces of the garment. Count stitches and rows over 10 cm. If your gauge swatch is too small, switch to larger needles. If your gauge swatch is too big, switch to smaller needles.



Abbreviations

beg = begin(ning) · **ch** = chain · **cont** = continue · **dec** = decreas(e)(ing) · **inc** = increas(e)(ing) · **k** = knit · **kwise** = as if to knit
meas = measures · **M1L** = lift strand between sts from front to back and knit this strand through the back loop · **M1R** = lift strand between sts from the back and knit this strand through the front loop · **patt** = pattern · **pm** = place marker · **p** = purl
pwise = as if to purl · **rem** = remain(ing) · **rep** = repeat(s) · **rev St st** = reverse stockinette stitch · **rnd(s)** = round(s) · **RS** = right side · **sc** = single crochet · **skp** = slip 1 stitch as if to knit, knit 1 stitch, pass slipped stitch over knitted stitch · **sk2p** = slip 1 stitch as if to knit, knit 2 together, pass slipped stitch over knitted stitch · **s2kp** = slip 2 stitches as if to knit, k 1 stitch, pass slipped stitches over knitted stitch · **sl** = slip · **st(s)** = stitch(es) · **St st** = stockinette stitch · **tbl** = through the back loop · **tog** = together · **wyib** = with yarn in back of work · **wyif** = with yarn in front of work · **WS** = wrong side · **yo(s)** = yarn over(s)

Publisher's Info

Publisher: Lana Grossa GmbH, Gaimersheim, www.lanagrossa.com

Photographer: Nicolas Olonetzky, www.olonetzky.com