



www.lanagrossa.com

WRAP · TREFILI
Design 05 – Häkeln 03

WRAP · TREFILI

Design 05 – Häkeln 03



Size 55 x 160 cm

Materials: 250 g of Lana Grossa **Trefili** (62% cotton, 26% viscose, 12% linen; 160 m/50 g) in Concrete Grey/Mouse Grey (**col 18**). Size 4.5 mm crochet hook.

Pattern: Multiple of 9 + 6 + 3. Work according to chart. Numbers at right edge of chart indicate RS rows, numbers at left edge of chart indicate WS rows. Work rows 1 – 5 once, then rep rows 2 – 5.

Gauge: 2 patt reps and 8 rows = 11 x 12.5 cm, measured laying flat.

Wrap: With size 4.5 mm hook, ch 96 + ch 3. Work row 1 of chart: Work to patt rep, work patt rep 9 times, work to end of chart. Cont to foll chart until piece meas approx. 160 cm from beg and/or until yarn is used up, ending with a chart row 3 or 5. When working last row, work ch-4 sps in place of ch-7 sps. Fasten off.

Finishing: Pin piece to measurements and block. Note: Wrap stretches considerably when worn.

Chart

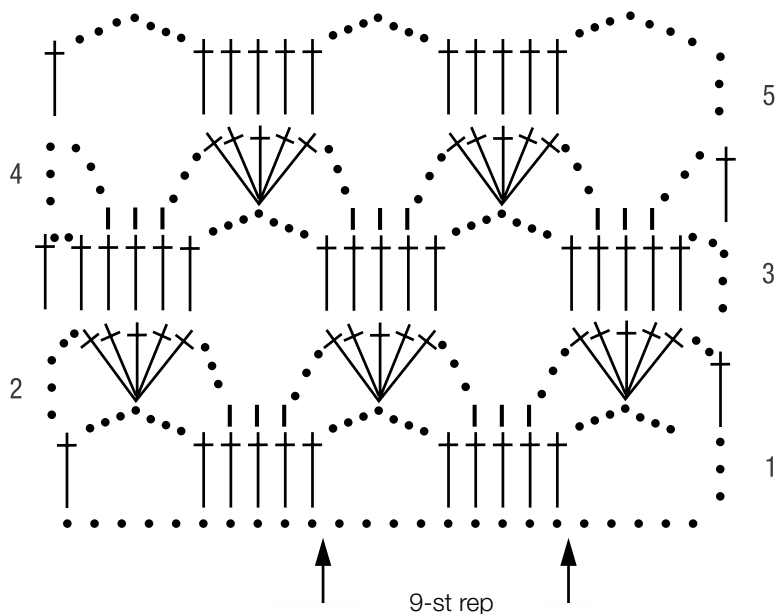


Chart key:

• = chain (ch)

■ = single crochet (sc)

† = double crochet (dc)

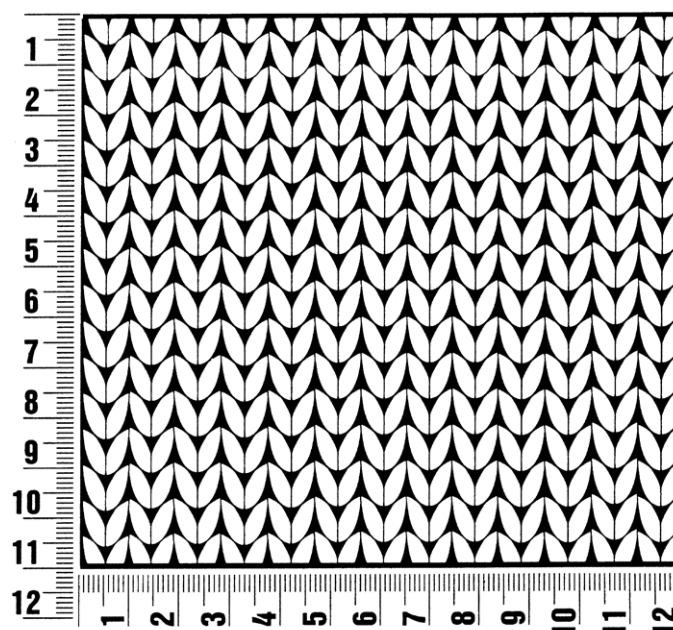


= 5 dc in same st and/or sp

Gauge Swatch

Before you begin ...

...make a gauge swatch. Use the recommended needles, yarns and pattern stitch for your gauge swatch. It should measure approx. 12 cm x 12 cm. Cast-on and bind-off rows, as well as selvage stitches should not be included in the measurement. Pin your swatch and block it as you would the finished pieces of the garment. Count stitches and rows over 10 cm. If your gauge swatch is too small, switch to larger needles. If your gauge swatch is too big, switch to smaller needles.



Abbreviations

beg = begin(ning) · **ch** = chain · **cont** = continue · **dec** = decreas(e)(ing) · **inc** = increas(e)(ing) · **k** = knit · **kwise** = as if to knit
meas = measures · **M1L** = lift strand between sts from front to back and knit this strand through the back loop · **M1R** = lift strand between sts from the back and knit this strand through the front loop · **patt** = pattern · **pm** = place marker · **p** = purl
pwise = as if to purl · **rem** = remain(ing) · **rep** = repeat(s) · **rev St st** = reverse stockinette stitch · **rnd(s)** = round(s) · **RS** = right side · **sc** = single crochet · **skp** = slip 1 stitch as if to knit, knit 1 stitch, pass slipped stitch over knitted stitch · **sk2p** = slip 1 stitch as if to knit, knit 2 together, pass slipped stitch over knitted stitch · **s2kp** = slip 2 stitches as if to knit, k 1 stitch, pass slipped stitches over knitted stitch · **sl** = slip · **st(s)** = stitch(es) · **St st** = stockinette stitch · **tbl** = through the back loop · **tog** = together · **wyib** = with yarn in back of work · **wyif** = with yarn in front of work · **WS** = wrong side · **yo(s)** = yarn over(s)

Publisher's Info

Publisher: Lana Grossa GmbH, Gaimersheim, www.lanagrossa.com

Photographer: Nicolas Olonetzky, www.olonetzky.com