



www.lanagrossa.com

SHAWL · ABOUT BERLIN SPOTTY

Design 07 – Häkeln 03

SHAWL · ABOUT BERLIN SPOTTY

Design 07 – Häkeln 03



Size 150 x 113 x 190 cm

Materials: 500 g of Lana Grossa **About Berlin Spotty** (55% cotton, 26% polyamide, 19% polyester; 125 m/50 g) in Pastel Blue Variegated (**col 5**). Size 3.5 mm crochet hook.

Chart 1: Shows one 48-st filet crochet segment of chart 3, enlarged.

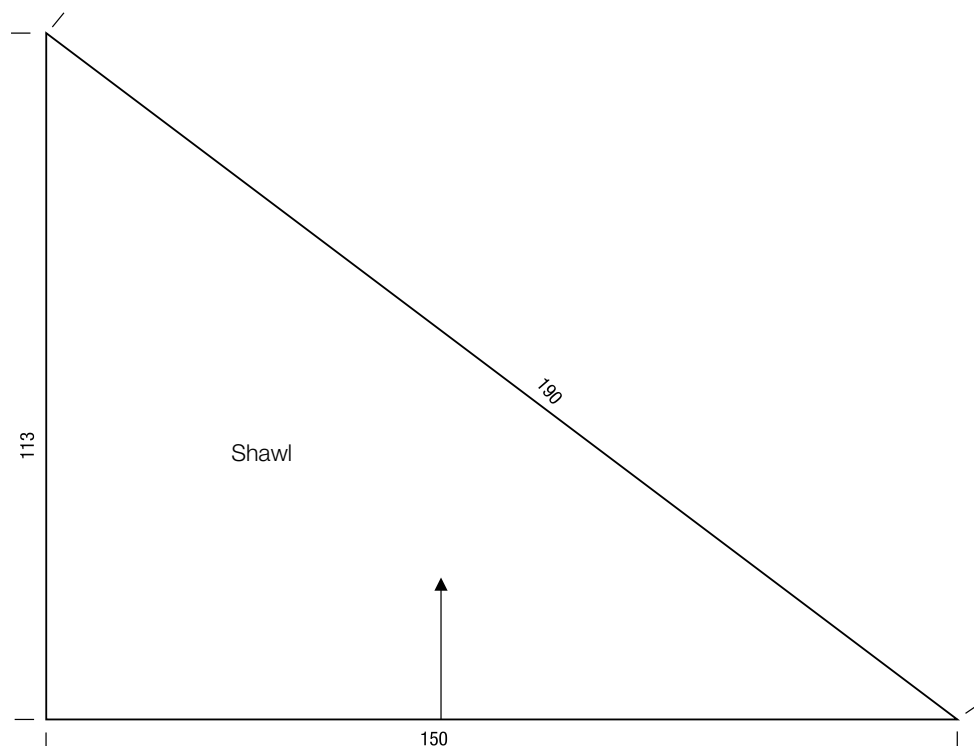
Chart 2: Shows side shaping at right edge of shawl, enlarged.

Chart 3: Shows entire shawl.

Gauge: 22.5 sts and 10 rows = 10 x 10 cm in chart patt 3 with size 3.5 mm hook.

Shawl: With size 3.5 mm hook, ch 339 + ch 3. Work rows 1 – 113 of chart 3. Fasten off.

Finishing: Pin piece to measurements and block.

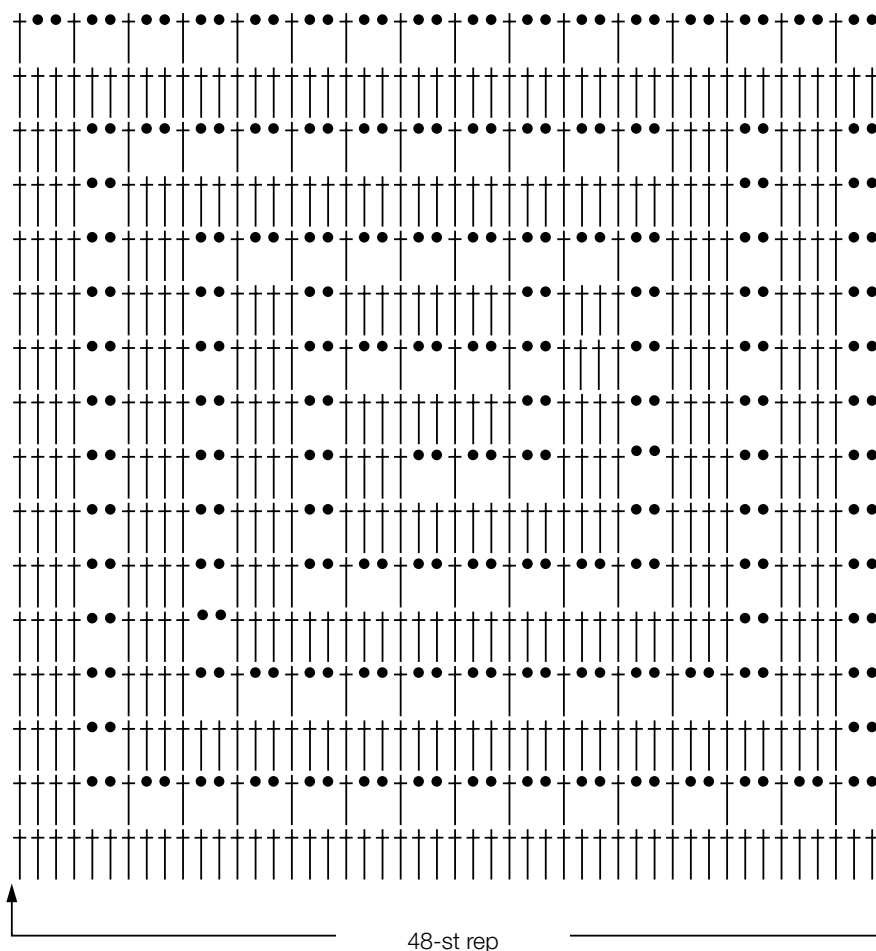


SHAWL · ABOUT BERLIN SPOTTY

Design 07 – Häkeln 03

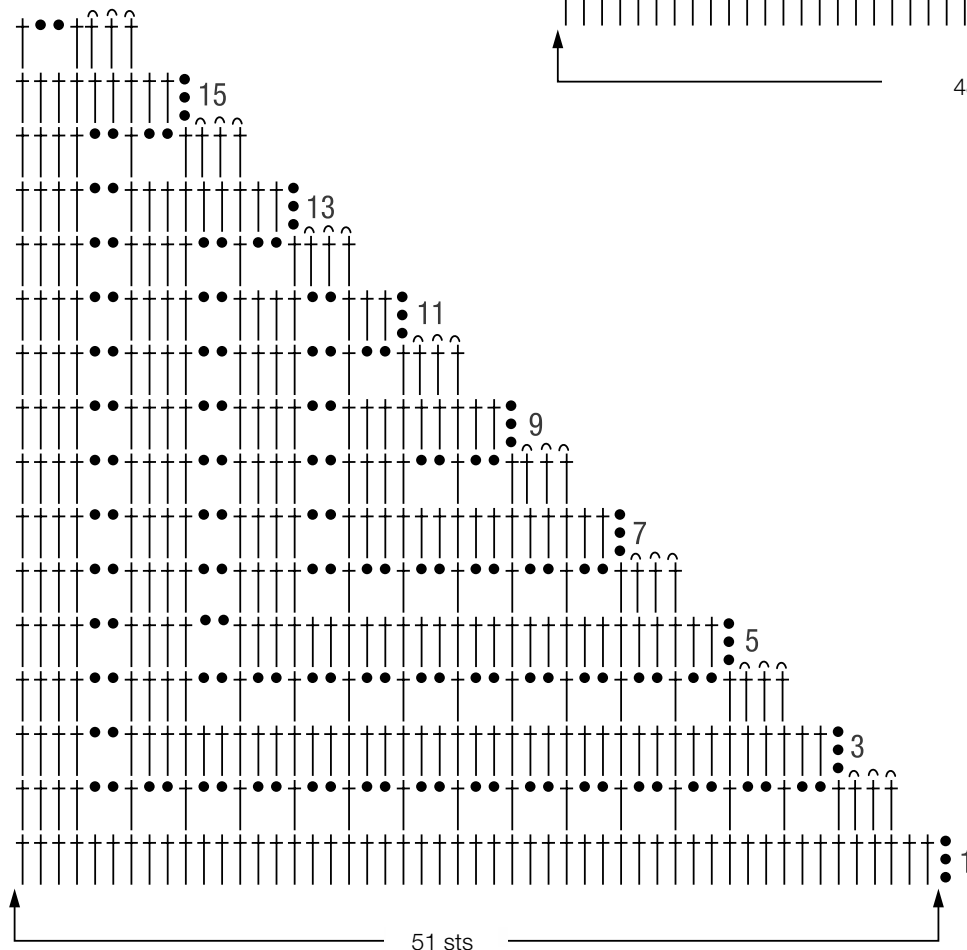


Chart 1



48-st rep

Chart 2



51 sts

Chart key:

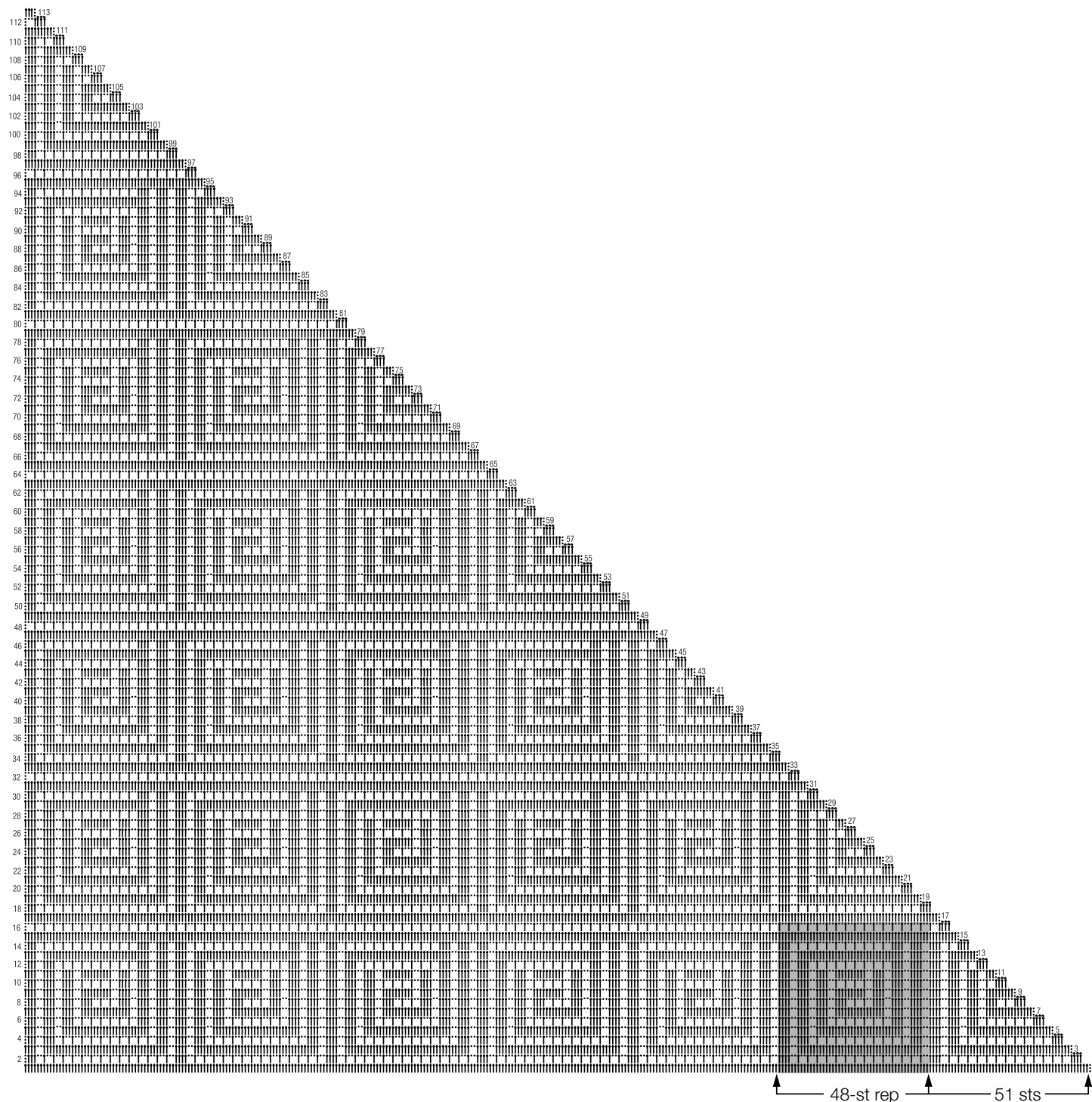
- = chain (ch)
- ^ = slip stitch (sl st)
- † = double crochet (dc)

SHAWL · ABOUT BERLIN SPOTTY

Design 07 – Häkeln 03



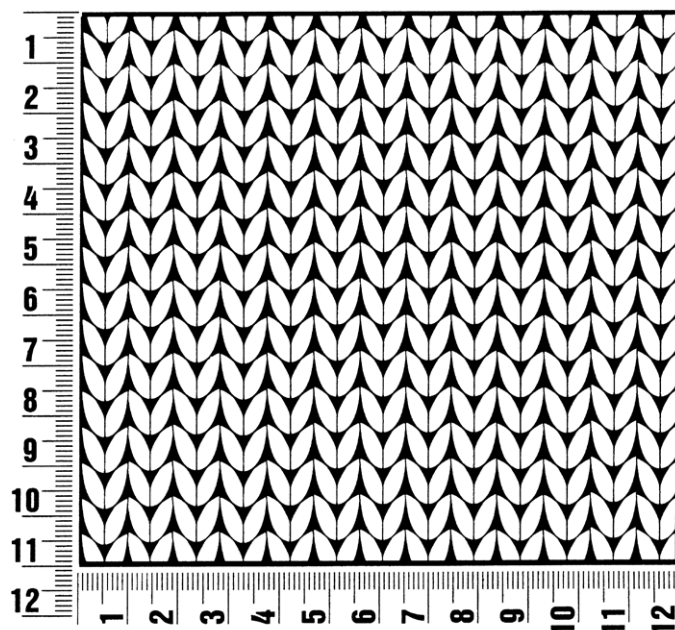
Chart 3



Gauge Swatch

Before you begin ...

...make a gauge swatch. Use the recommended needles, yarns and pattern stitch for your gauge swatch. It should measure approx. 12 cm x 12 cm. Cast-on and bind-off rows, as well as selvage stitches should not be included in the measurement. Pin your swatch and block it as you would the finished pieces of the garment. Count stitches and rows over 10 cm. If your gauge swatch is too small, switch to larger needles. If your gauge swatch is too big, switch to smaller needles.



Abbreviations

beg = begin(ning) · **ch** = chain · **cont** = continue · **dec** = decreas(e)(ing) · **inc** = increas(e)(ing) · **k** = knit · **kwise** = as if to knit
meas = measures · **M1L** = lift strand between sts from front to back and knit this strand through the back loop · **M1R** = lift strand between sts from the back and knit this strand through the front loop · **patt** = pattern · **pm** = place marker · **p** = purl
pwise = as if to purl · **rem** = remain(ing) · **rep** = repeat(s) · **rev St st** = reverse stockinette stitch · **rnd(s)** = round(s) · **RS** = right side · **sc** = single crochet · **skp** = slip 1 stitch as if to knit, knit 1 stitch, pass slipped stitch over knitted stitch · **sk2p** = slip 1 stitch as if to knit, knit 2 together, pass slipped stitch over knitted stitch · **s2kp** = slip 2 stitches as if to knit, k 1 stitch, pass slipped stitches over knitted stitch · **sl** = slip · **st(s)** = stitch(es) · **St st** = stockinette stitch · **tbl** = through the back loop · **tog** = together · **wyib** = with yarn in back of work · **wyif** = with yarn in front of work · **WS** = wrong side · **yo(s)** = yarn over(s)

Publisher's Info

Publisher: Lana Grossa GmbH, Gaimersheim, www.lanagrossa.com

Photographer: Nicolas Olonetzky, www.olonetzky.com