

SHAWL · TREFILI

Design 12 – Häkeln 03

Design 12 – Häkeln 03



Size 90 x 180 cm

Materials: 600 g of Lana Grossa **Trefili** (62% cotton, 26% viscose, 12% linen; 160 m/50 g) in Mustard/Curry (**col 14**). Size 4 mm crochet hook.

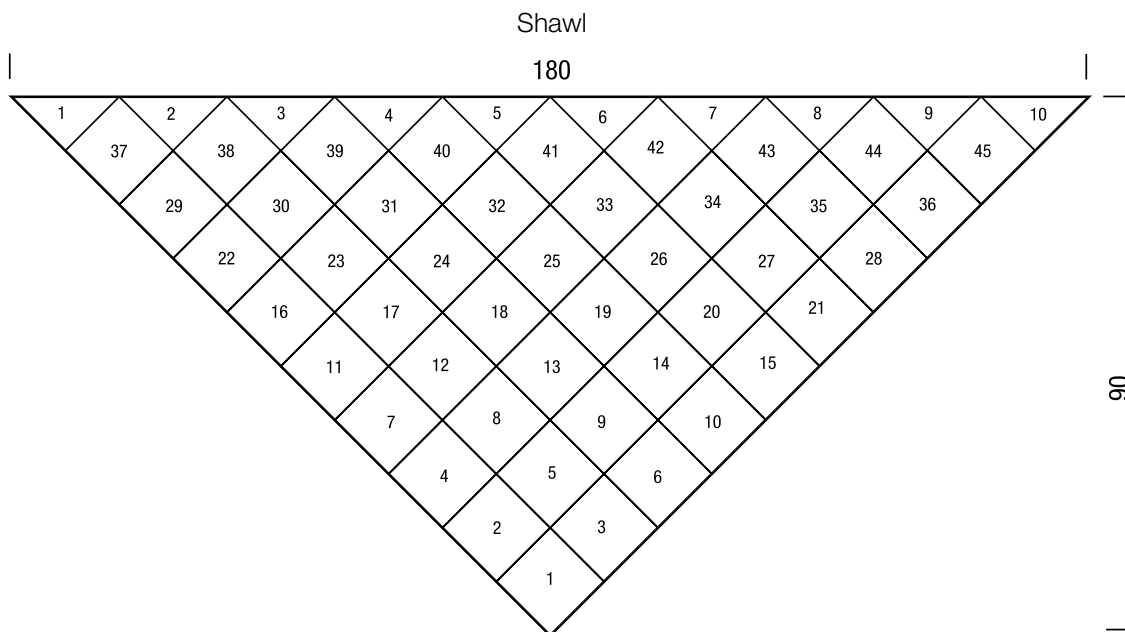
Motif: Work according to chart 1. Ch 4, 15 dc into first ch, sl st in 4th ch to join. Work rnds 1 – 7 once. Note: The “wrong side” of the pattern is considered the “right side”.

Triangle: Work according to chart 2. Ch 4, 4 dc into first ch. Work rows 1 – 9 once, inc 2 sts at each end of every row = 37 sts.

Gauges: With size 4 mm hook: Motif meas 13 x 13 cm; triangle meas 18 x 9 cm.

Shawl: Crochet 45 motifs and 10 triangles.

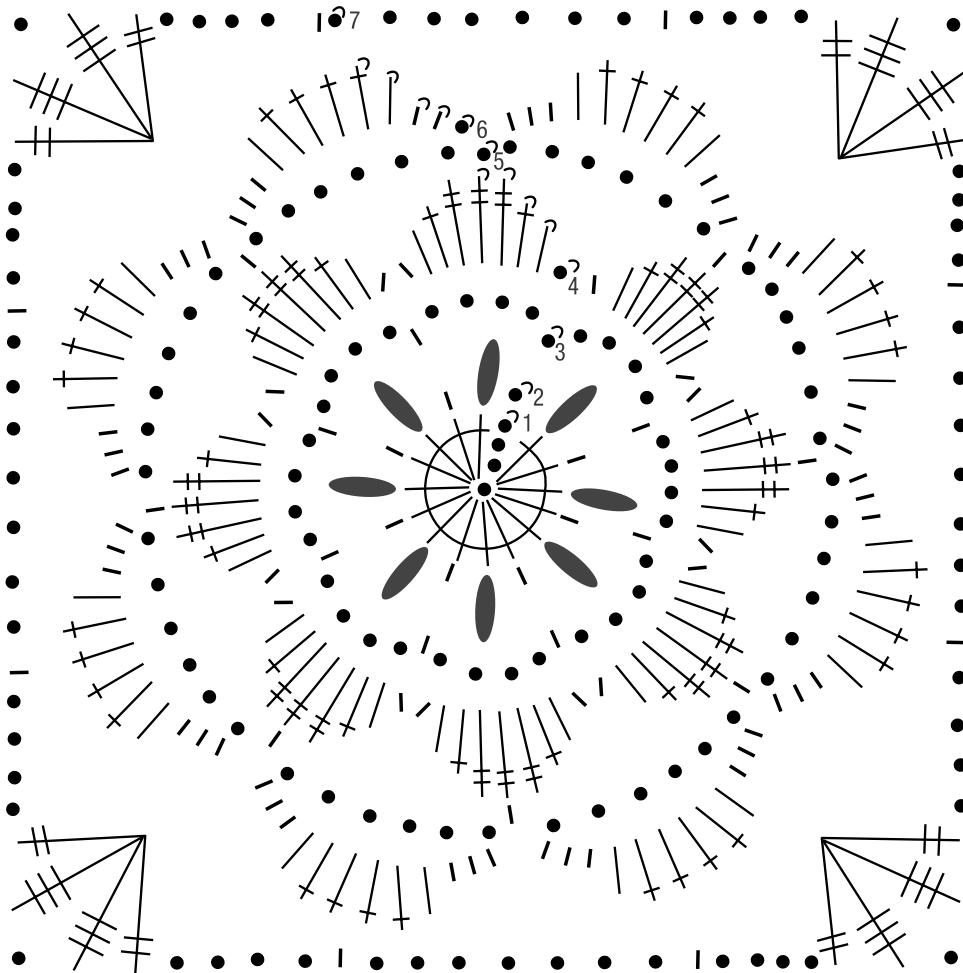
Finishing: Pin pieces to measurements and block. Arrange motifs and triangles as shown on schematic. With WS facing, join motifs and triangles with rows of sc. Work 1 rnd sc around entire edge of shawl. **Fringe:** For each fringe, cut 6 strands of yarn, each strand approx. 50 cm long. Insert size 4 mm hook into fabric from WS, fold 6 strands of yarn in half to form a loop, draw loop through fabric, then draw yarn ends through loop and tighten. Attach fringe evenly spaced (1 fringe every 2 cm) along each side edge of shawl.



SHAWL · TREFILI

Design 12 – Häkeln 03

Chart 1



SHAWL · TREFILI

Design 12 – Häkeln 03



Chart 2

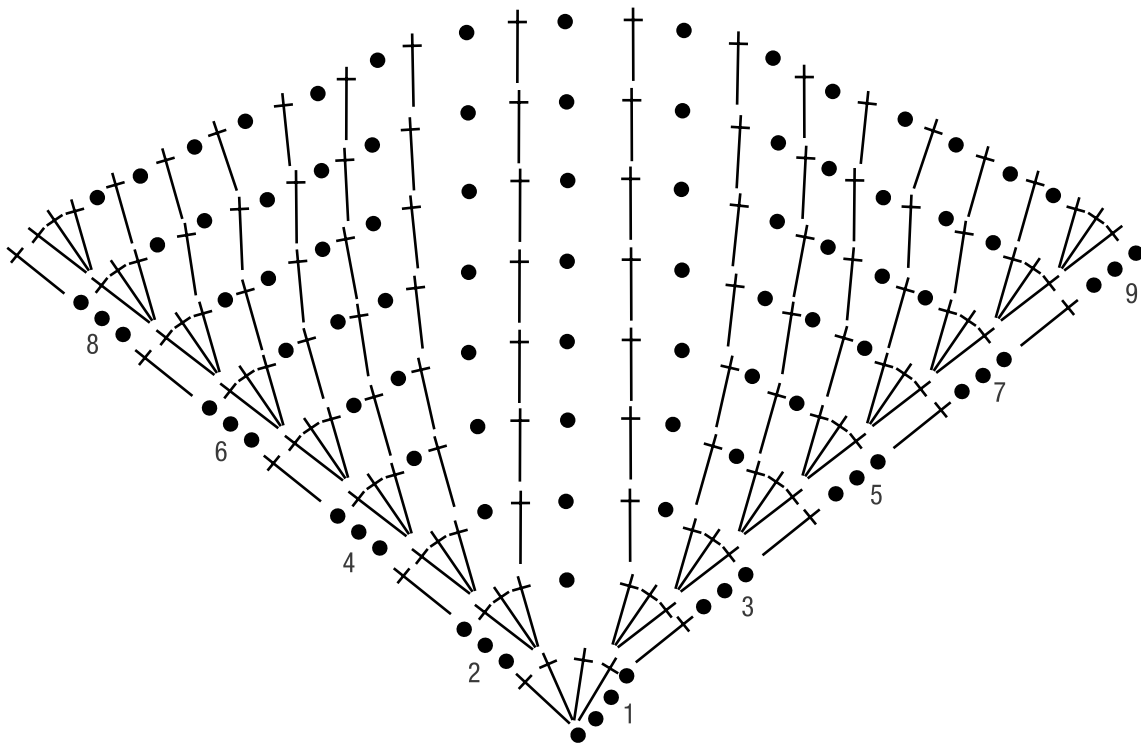


Chart key:

- = chain (ch)
- ^ = slip stitch (sl st)
- ┆ = single crochet (sc)
- ┆ = half double crochet (hdc)
- ┆ = double crochet (dc)
- ┆ = treble (tr)
- ┆ = double treble (dtr)
- = bobble: [yo hook, insert hook and pull up loop, yo, draw through first 2 loops on hook] 6 times into same indicated st or sp, yo and draw through all loops on hook, ch 1

Gauge Swatch

Before you begin ...

...make a gauge swatch. Use the recommended needles, yarns and pattern stitch for your gauge swatch. It should measure approx. 12 cm x 12 cm. Cast-on and bind-off rows, as well as selvage stitches should not be included in the measurement. Pin your swatch and block it as you would the finished pieces of the garment. Count stitches and rows over 10 cm. If your gauge swatch is too small, switch to larger needles. If your gauge swatch is too big, switch to smaller needles.



Abbreviations

beg = begin(ning) · **ch** = chain · **cont** = continue · **dec** = decreas(e)(ing) · **inc** = increas(e)(ing) · **k** = knit · **kwise** = as if to knit
meas = measures · **M1L** = lift strand between sts from front to back and knit this strand through the back loop · **M1R** = lift strand between sts from the back and knit this strand through the front loop · **patt** = pattern · **pm** = place marker · **p** = purl
pwise = as if to purl · **rem** = remain(ing) · **rep** = repeat(s) · **rev St st** = reverse stockinette stitch · **rnd(s)** = round(s) · **RS** = right side · **sc** = single crochet · **skp** = slip 1 stitch as if to knit, knit 1 stitch, pass slipped stitch over knitted stitch · **sk2p** = slip 1 stitch as if to knit, knit 2 together, pass slipped stitch over knitted stitch · **s2kp** = slip 2 stitches as if to knit, k 1 stitch, pass slipped stitches over knitted stitch · **sl** = slip · **st(s)** = stitch(es) · **St st** = stockinette stitch · **tbl** = through the back loop · **tog** = together · **wyib** = with yarn in back of work · **wyif** = with yarn in front of work · **WS** = wrong side · **yo(s)** = yarn over(s)

Publisher's Info

Publisher: Lana Grossa GmbH, Gaimersheim, www.lanagrossa.com
Photographer: Nicolas Olonetzky, www.olonetzky.com