



www.lanagrossa.com

HAT · TREFILI

Design 19 – Häkeln 03

HAT · TREFILI

Design 19 – Häkeln 03



Size To fit 54 - 56 cm head circumference

Materials: 100 g of Lana Grossa **Trefili** (62% cotton, 26% viscose, 12% linen; 160 m/50 g) in Wine Red/Clay Red (**col 19**). Size 3.5 and 4.5 mm crochet hook.

Note: Work with 2 strands held tog throughout.

Gauges: 16 dc and 7 rnds = 10 x 10 cm with size 4.5 mm hook; 19 sc blo and 20 rnds = 10 x 10 cm with size 3.5 mm hook.

Hat: Worked from the center out. With 2 strands held tog, make an adjustable ring. **Rnd 1:** With size 4.5 mm hook, ch 3, 11 dc into ring, sl st in top of beg ch-3 to join. Pull tail yarn to cinch ring closed. **Rnd 2:** Ch 3, [ch 1, dc in next dc] 11 times, ch 1 = 24 sts, sl st in top of beg ch-3 to join. **Rnd**

3: Ch 3, [3 dc into next ch-sp, dc in next dc] 11 times, 3 dc into next ch-sp = 48 sts, sl st in top of beg ch-3 to join.

Rnd 4: Ch 3, [ch 2, sk next dc, dc in next dc] 23 times, ch 2, sk next dc = 72 sts, sl st in top of beg ch-3 to join. **Rnd**

5: Ch 3, [ch 3, dc in next dc] 23 times, ch 3 = 96 sts, sl st in top of beg ch-3 to join. **Rnd 6:** Ch 3, [3 dc into next

ch-sp, dc in next dc] 23 times, 3 dc into next ch-sp = 96 sts, sl st in top of beg ch-3 to join. **Rnd 7:** Ch 3, [ch 2, sk

next 2 dc, dc in next dc] 31 times, ch 2, sk next 2 dc = 96 sts, sl st in top of beg ch-3 to join. **Rnd 8:** Ch 3, [2 dc into

next ch-sp, dc in next dc] 31 times, 2 dc into next ch-sp = 96 sts, sl st in top of beg ch-3 to join. **Rnds 9 and 10:** As

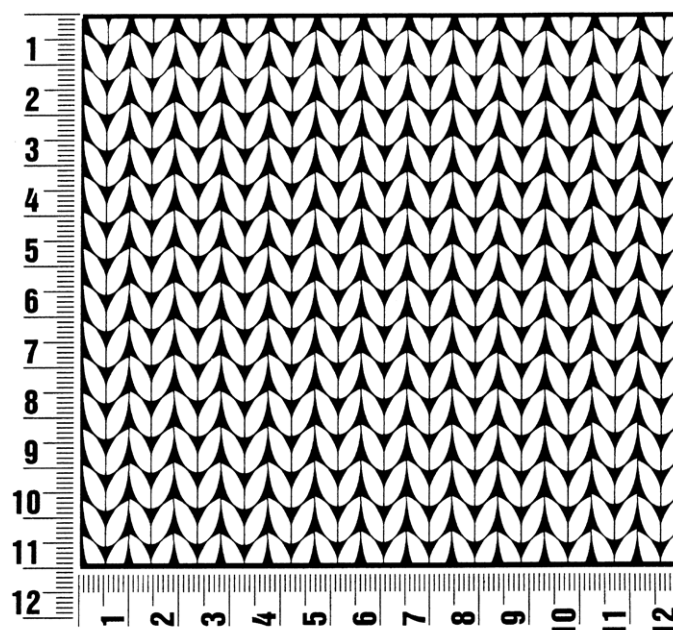
rnds 7 and 8. **Rnds 11 and 12:** As rnds 7 and 8. **Rnds 13 and 14:** As rnds 7 and 8, working rnd 14 with size 3.5 mm

hook. Cont with size 3.5 mm hook. **Rnd 15:** Ch 1, sc around, sl st in beg ch to join. **Rnds 16 – 22:** Ch 1, sc blo around, sl st in beg ch to join. Fasten off.

Gauge Swatch

Before you begin ...

...make a gauge swatch. Use the recommended needles, yarns and pattern stitch for your gauge swatch. It should measure approx. 12 cm x 12 cm. Cast-on and bind-off rows, as well as selvage stitches should not be included in the measurement. Pin your swatch and block it as you would the finished pieces of the garment. Count stitches and rows over 10 cm. If your gauge swatch is too small, switch to larger needles. If your gauge swatch is too big, switch to smaller needles.



Abbreviations

beg = begin(ning) · **ch** = chain · **cont** = continue · **dec** = decreas(e)(ing) · **inc** = increas(e)(ing) · **k** = knit · **kwise** = as if to knit
meas = measures · **M1L** = lift strand between sts from front to back and knit this strand through the back loop · **M1R** = lift strand between sts from the back and knit this strand through the front loop · **patt** = pattern · **pm** = place marker · **p** = purl
pwise = as if to purl · **rem** = remain(ing) · **rep** = repeat(s) · **rev St st** = reverse stockinette stitch · **rnd(s)** = round(s) · **RS** = right side · **sc** = single crochet · **skp** = slip 1 stitch as if to knit, knit 1 stitch, pass slipped stitch over knitted stitch · **sk2p** = slip 1 stitch as if to knit, knit 2 together, pass slipped stitch over knitted stitch · **s2kp** = slip 2 stitches as if to knit, k 1 stitch, pass slipped stitches over knitted stitch · **sl** = slip · **st(s)** = stitch(es) · **St st** = stockinette stitch · **tbl** = through the back loop · **tog** = together · **wyib** = with yarn in back of work · **wyif** = with yarn in front of work · **WS** = wrong side · **yo(s)** = yarn over(s)

Publisher's Info

Publisher: Lana Grossa GmbH, Gaimersheim, www.lanagrossa.com

Photographer: Nicolas Olonetzky, www.olonetzky.com