



www.lana-grossa.com



CLOUD · RISERVA
Design 34 – Kids 12

CLOUD · RISERVA

Design 34 – Kids 12



Size approx. 34 cm wide and 23 cm tall

Materials: 150 g of Lana Grossa **Riserva** (70% organic cotton, 30% recycled polyamide; 125 m/50 g) in Ecru (**col 2**). Size 3.5 mm crochet hook; fiber fill.

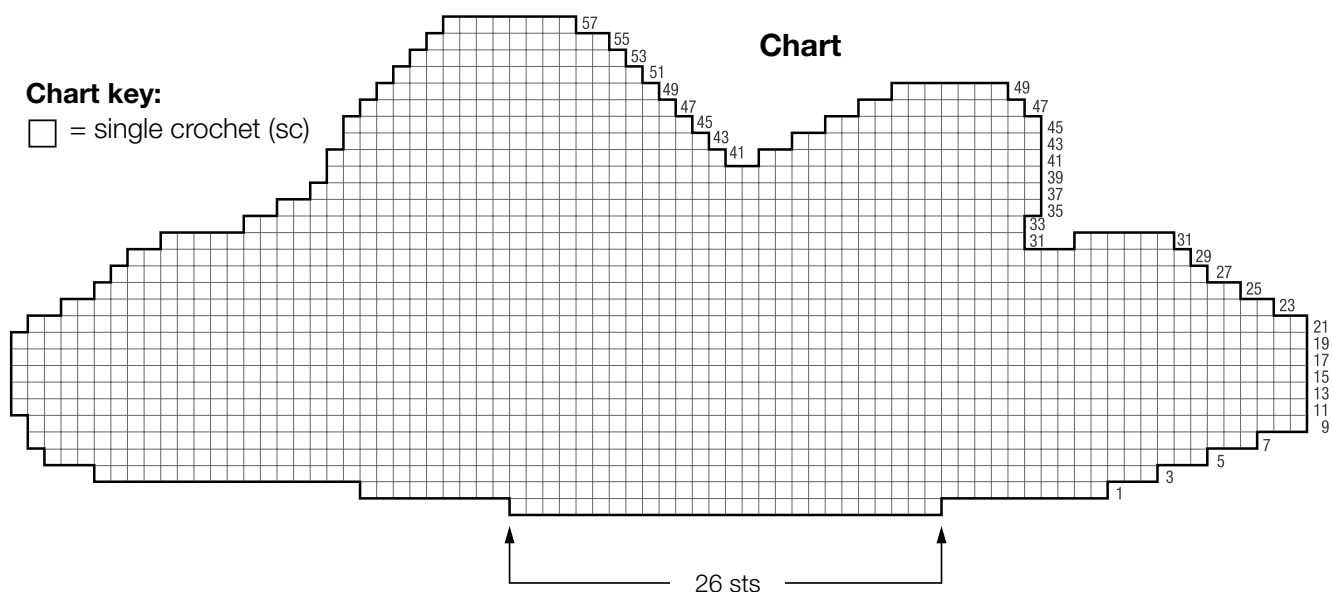
Single crochet [sc] in rows: Beg each row with ch 1.

Chart: Numbers at right edge of chart indicate rows. 1 square = 1 sc and 2 rows. To increase 1 sc, work 2 sc in next sc. To increase more than 1 sc at beg and/or end of row, work the number of ch shown on chart, then work sc over the ch on foll row. To decrease 1 sc, sc2tog in next 2 sc. To decrease more than 1 sc at beg of row, skip the number of sts shown on chart and work sl st instead; at end of row, leave the number of sts shown on chart unworked.

Gauge: 22.5 sc and 25 rows = 10 x 10 cm with size 3.5 mm hook.

Cloud: Make 2 alike. Ch 26, work rows 1 – 58 of chart. Fasten off.

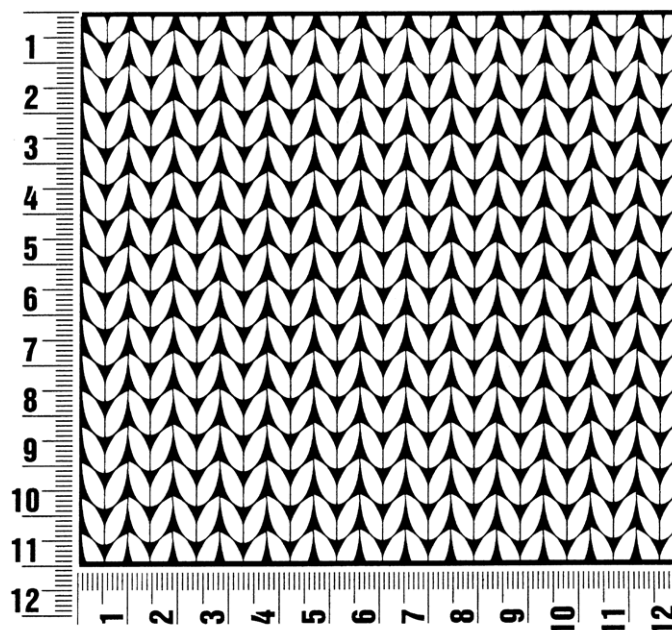
Finishing: With RS facing, join pieces with sc, leaving an opening at bottom. Stuff with fiber fill. Close rem seam. Work 1 rnd rev sc [work sc from left to right] around entire edge of cloud.



Gauge Swatch

Before you begin ...

...make a gauge swatch. Use the recommended needles, yarns and pattern stitch for your gauge swatch. It should measure approx. 12 cm x 12 cm. Cast-on and bind-off rows, as well as selvage stitches should not be included in the measurement. Pin your swatch and block it as you would the finished pieces of the garment. Count stitches and rows over 10 cm. If your gauge swatch is too small, switch to larger needles. If your gauge swatch is too big, switch to smaller needles.



Abbreviations

beg = begin(ning) · **ch** = chain · **cont** = continue · **dec** = decreas(e)(ing) · **inc** = increas(e)(ing) · **k** = knit · **kwise** = as if to knit
meas = measures · **M1L** = lift strand between sts from front to back and knit this strand through the back loop · **M1R** = lift strand between sts from the back and knit this strand through the front loop · **patt** = pattern · **pm** = place marker · **p** = purl
pwise = as if to purl · **rem** = remain(ing) · **rep** = repeat(s) · **rev St st** = reverse stockinette stitch · **rnd(s)** = round(s) · **RS** = right side · **sc** = single crochet · **skp** = slip 1 stitch as if to knit, knit 1 stitch, pass slipped stitch over knitted stitch · **sk2p** = slip 1 stitch as if to knit, knit 2 together, pass slipped stitch over knitted stitch · **s2kp** = slip 2 stitches as if to knit, k 1 stitch, pass slipped stitches over knitted stitch · **sl** = slip · **st(s)** = stitch(es) · **St st** = stockinette stitch · **tbl** = through the back loop · **tog** = together · **wyib** = with yarn in back of work · **wyif** = with yarn in front of work · **WS** = wrong side · **yo(s)** = yarn over(s)

Publisher's Info

Publisher: Lana Grossa GmbH, Gaimersheim, www.lana-grossa.com

Photographer: Clara Nebeling