



[www.lana-grossa.com](http://www.lana-grossa.com)



# **PULLOVER · AMOROSO**

Design 15 – Lookbook 12

# PULLOVER • AMOROSO

## Design 15 – Lookbook 12



**Size** 36/38 (40/42, 44)

Instructions are given for first size. Figures in parenthesis refer to larger sizes. When only one figure is given, it applies to all sizes.

**Materials:** 300 (400, 400) g of Lana Grossa **Amoroso** (23% pure wool, 23% silk, 23% cotton, 23% acrylic, 8% polyamide; 400 m/100 g) in Mint/Grey Blue/Grey Green/Silver Grey (**col 13**). Size 5 mm needles.

**Main patt:** Work according to chart. Multiple of 2 + 4 + 4 sel-vage sts. NOTE: Selvage sts are not included on chart. Num-bers at right edge of chart indicate RS rows, numbers at left edge of chart indicate WS rows. Rep rows 1 – 8.

**Rev St st:** P on RS, k on WS.

**Two-stitch selvage:** On RS row, sl 1 pwise wyib, k1, patt to last 2 sts, k1, sl 1 pwise wyib. On WS row, p1, sl 1 pwise wyif, patt to last 2 sts, sl 1 pwise wyif, p1.

**Gauge:** 18 sts and 28 rows = 10 x 10 cm in main patt on size 5 mm needles.

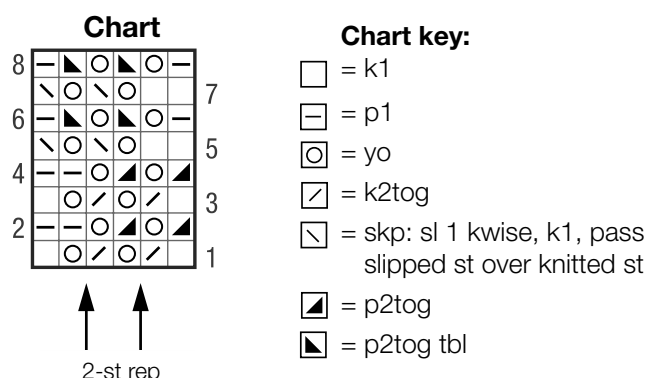
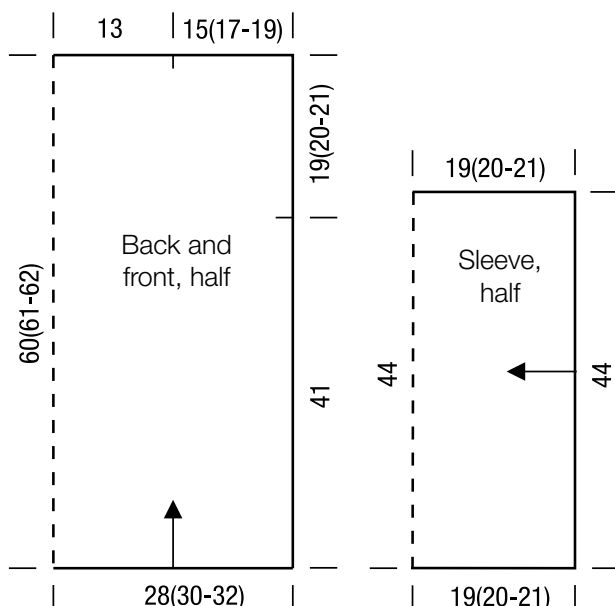
**Back:** With size 5 mm needles cast on 104 (112, 120) sts. Purl 1 WS row. Next row (RS): Two-stitch selvage, 1 st in rev

St st, work row 1 of chart = work to patt rep, work patt rep 47 (51, 55) times, work to end of chart; 1 st in rev St st, two-stitch selvage. Maintaining selvage sts, cont to foll chart until piece meas 41 cm from cast-on. Place marker in first and last st on last WS row to indicate beg of armholes. Cont in patt until piece meas 60 (61, 62) cm from cast-on, ending with a chart row 4 or 8. Bind off all sts kwise.

**Front:** Work same as back.

**Sleeves:** Worked side to side. With size 5 mm needles cast on 80 sts. Purl 1 WS row. Next row (RS): Two-stitch selvage, 1 st in rev St st, work row 1 of chart = work to patt rep, work patt rep 35 times, work to end of chart; 1 st in rev St st, two-stitch selvage. Maintaining selvage sts, cont to foll chart until piece meas 38 (40, 42) cm from cast-on and rows 1 – 8 have been worked a total of 13 (14, 15) times. Bind off all sts kwise.

**Finishing:** Pin pieces to measurements and block. Sew shoulder seams, leaving center 26 cm open for neck. Sew on sleeves between markers. Sew side and sleeve seams. Note: Sew all seams 1 st in from edge, that is between the first and 2nd st of the two-stitch selvage.

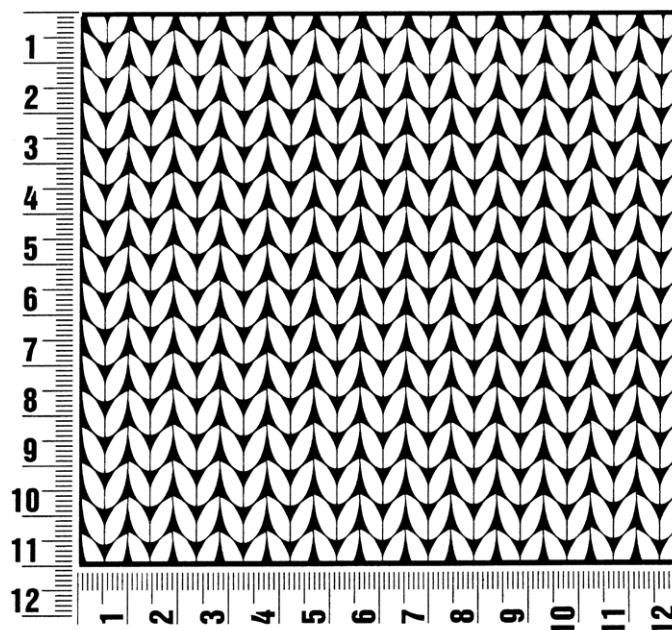




## Gauge Swatch

### Before you begin ...

...make a gauge swatch. Use the recommended needles, yarns and pattern stitch for your gauge swatch. It should measure approx. 12 cm x 12 cm. Cast-on and bind-off rows, as well as selvage stitches should not be included in the measurement. Pin your swatch and block it as you would the finished pieces of the garment. Count stitches and rows over 12 cm. If your gauge swatch is too small, switch to larger needles. If your gauge swatch is too big, switch to smaller needles.



## Abbreviations

**beg** = begin(ning) · **ch** = chain · **cont** = continue · **dec** = decreas(e)(ing) · **inc** = increas(e)(ing) · **k** = knit · **kwise** = as if to knit  
**meas** = measures · **M1L** = lift strand between sts from front to back and knit this strand through the back loop · **M1R** = lift strand between sts from the back and knit this strand through the front loop · **patt** = pattern · **pm** = place marker · **p** = purl  
**pwise** = as if to purl · **rem** = remain(ing) · **rep** = repeat(s) · **rev St st** = reverse stockinette stitch · **rnd(s)** = round(s) · **RS** = right side · **sc** = single crochet · **skp** = slip 1 stitch as if to knit, knit 1 stitch, pass slipped stitch over knitted stitch · **sk2p** = slip 1 stitch as if to knit, knit 2 together, pass slipped stitch over knitted stitch · **s2kp** = slip 2 stitches as if to knit, k 1 stitch, pass slipped stitches over knitted stitch · **sl** = slip · **st(s)** = stitch(es) · **St st** = stockinette stitch · **tbl** = through the back loop · **tog** = together · **wyib** = with yarn in back of work · **wyif** = with yarn in front of work · **WS** = wrong side · **yo(s)** = yarn over(s)

### Publisher's Info

**Publisher:** Lana Grossa GmbH, Gaimersheim, [www.lana-grossa.com](http://www.lana-grossa.com)

**Photographer:** Wilfried Wulff, [www.wilfriedwulff.com](http://www.wilfriedwulff.com)