



www.lana-grossa.com

JACKET · AMOROSO

Design 19 – Lookbook 12

JACKET • AMOROSO

Design 19 – Lookbook 12



Size 36/38 (40/42, 44)

Instructions are given for first size. Figures in parenthesis refer to larger sizes. When only one figure is given, it applies to all sizes.

Materials: 400 (500, 500) g of Lana Grossa **Amoroso** (23% pure wool, 23% silk, 23% cotton, 23% acrylic, 8% polyamide; 400 m/100 g) in Antique Violet/Orange/Apple Green (**col 12**). Size 4 and 6 mm needles.

Rib patt: K1, p1.

St st: K on RS, p on WS.

7-st left front band: Row 1 (WS): Sl 1 pwise wyif, [p1, k1] 3 times. Row 2 (RS): [P1, sl 1 kwise wyib] 3 times, k1.

7-st right front band: Row 1 (WS): [K1, p1] 3 times, sl 1 pwise wyif. Row 2 (RS): K1, [sl 1 kwise wyib, p1] 3 times.

Selvage sts: On every row: Knit first and last st.

Full-fashion decrease: At beg of RS row, 7-st right front band, k4, skp; at end of RS row, work to last 13 sts, k2tog, k4, 7-st left front band.

Full-fashion increase: On RS row: M1R, 2 sts in from each edge.

Gauge: 18 sts and 25 rows = 10 x 10 cm in St st on size 6 mm needles.

Back: With size 4 mm needles loosely cast on 111 (117, 123) sts. Next row (WS): Selvage st, * k1, p1; rep from * to last 2 sts, k1, selvage st. Work in rib patt as set by last row until piece meas 7 cm from cast-on, ending with a WS row. Change to size 6 mm needles. Maintaining selvage sts, work in St st and shape sides as foll: Working full-fashion inc, inc 1 st at each end of 15 (13, 11)th row, then every 14th row 9 times = 131 (137, 143) sts. Work even until piece meas 64 (63, 62) cm from cast-on. Place marker in first and last st on last WS row to indicate beg of armholes. Work even until piece meas 20 (21, 22) cm from armhole markers, ending with a WS row. Shape shoulders and neck: At each shoulder edge bind off 6 sts 7 (4, 1) time(s), 7 sts 1 (4, 7) times. At same time, when piece meas 4 cm from beg of shoulder shaping, shape neck as foll: Next row (RS): Bind off center 27 sts. Working each side separately, bind off 2 sts at each neck edge 1 time, 1 st 1 time. No sts rem.

Left front: With size 4 mm needles loosely cast on 57 (59, 63) sts. Next row (WS): 7-st left front band; beg with p1, work in rib patt to last st, selvage st. Work in patt as set by last row until piece meas 7 cm from cast-on, increasing 0 (1, 0) st at center of last WS row = 57 (60, 63) sts. Change to size 6 mm needles. Next row (RS): Selvage st, 49 (52, 55) sts in St st, 7-st left front band. Work in patt as set by last row, work incs for side shaping at right edge same as for back = 67 (70, 73) sts and when same length as back to armhole, place armhole marker at right edge. At same time, when piece meas 63 cm from cast-on, shape neck as foll: Working full-fashion dec, dec 1 st at end of next RS row, then every 6th row 10 times and when same length as back to shoulder, shape shoulder at right edge same as for back = 7 sts rem for neckband. Cont in patt over neckband sts for 9 cm, then bind off all sts.

Right front: Work same as left front, reversing all shaping and patt placement.

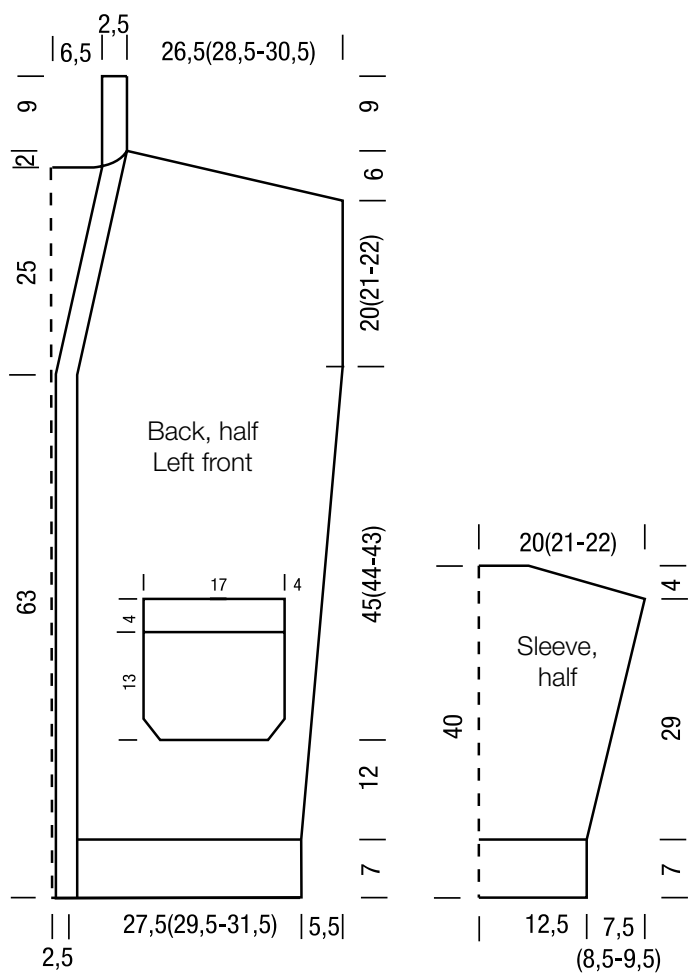
Sleeves: With size 4 mm needles loosely cast on 47 sts. Next row (WS): Selvage st, * k1, p1; rep from * to last 2 sts, k1, selvage st. Work in rib patt as set by last row until piece meas 7 cm from cast-on, ending with a WS row. Change to size 6 mm needles. Maintaining selvage sts, work in St st and shape sleeve as foll: Working full-fashion inc, inc 1 st at each end of 7th row, then every 6th row 2 times, then every alt 4th and 6th row 10 times (then every alt 4th and 6th row 8 times, then every 4th row 6 times / then every 4th row 16 times) = 73 (77, 81) sts. Work even until piece meas 36 cm from cast-on, ending with a WS row. Shape sleeve cap: Bind off 5 sts at beg of next 10 rows (5 sts at beg of next 4 rows, 6 sts at beg of next 2 rows, 5 sts at beg of next 2 rows, 6 sts at beg of next 2 rows / 5 sts at beg of next 2 rows, 6 sts at beg of next 8 rows). Bind off rem 23 sts.

Pockets: Make 2. With size 6 mm needles cast on 23 sts. Purl 1 WS row. Working first and last st as selvage sts, work in St st and shape pocket as foll: Working full-fashion inc, inc 1 st at each end of next 5 RS rows = 33 sts. Work even until piece meas 13 cm from cast-on, ending with a WS row. Change to size 4 mm needles. Next row (RS): Selvage st, * k1, p1; rep from * to last 2 sts, k1, selvage st. Work in rib patt as set by last row for a total of 4 cm. Bind off all sts in rib.

Finishing: Pin pieces to measurements and block. Referring to schematic for placement, sew pockets to fronts. Sew shoulder seams. Sew bound-off edges of neckbands tog, then sew neckband to back neck. Sew on sleeves between markers. Sew side and sleeve seams.

JACKET · AMOROSO

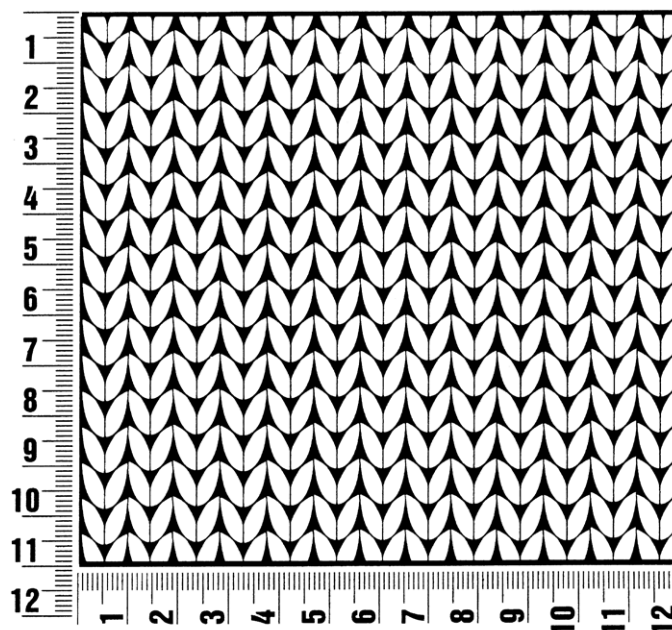
Design 19 – Lookbook 12



Gauge Swatch

Before you begin ...

...make a gauge swatch. Use the recommended needles, yarns and pattern stitch for your gauge swatch. It should measure approx. 12 cm x 12 cm. Cast-on and bind-off rows, as well as selvage stitches should not be included in the measurement. Pin your swatch and block it as you would the finished pieces of the garment. Count stitches and rows over 12 cm. If your gauge swatch is too small, switch to larger needles. If your gauge swatch is too big, switch to smaller needles.



Abbreviations

beg = begin(ning) · **ch** = chain · **cont** = continue · **dec** = decreas(e)(ing) · **inc** = increas(e)(ing) · **k** = knit · **kwise** = as if to knit
meas = measures · **M1L** = lift strand between sts from front to back and knit this strand through the back loop · **M1R** = lift strand between sts from the back and knit this strand through the front loop · **patt** = pattern · **pm** = place marker · **p** = purl
pwise = as if to purl · **rem** = remain(ing) · **rep** = repeat(s) · **rev St st** = reverse stockinette stitch · **rnd(s)** = round(s) · **RS** = right side · **sc** = single crochet · **skp** = slip 1 stitch as if to knit, knit 1 stitch, pass slipped stitch over knitted stitch · **sk2p** = slip 1 stitch as if to knit, knit 2 together, pass slipped stitch over knitted stitch · **s2kp** = slip 2 stitches as if to knit, k 1 stitch, pass slipped stitches over knitted stitch · **sl** = slip · **st(s)** = stitch(es) · **St st** = stockinette stitch · **tbl** = through the back loop · **tog** = together · **wyib** = with yarn in back of work · **wyif** = with yarn in front of work · **WS** = wrong side · **yo(s)** = yarn over(s)

Publisher's Info

Publisher: Lana Grossa GmbH, Gaimersheim, www.lana-grossa.com

Photographer: Wilfried Wulff, www.wilfriedwulff.com