



www.lana-grossa.com

VEST · RISERVA

Design 04 – Filati Journal 63

Size 36/38 (40/42, 44/46)

Instructions are given for first size. Figures in parenthesis refer to larger sizes. When only one figure is given, it applies to all sizes.

Materials: 400 (450, 450) g of Lana Grossa **Riserva** (70% organic cotton, 30% recycled polyamide; 125 m/50 g) in Grey Green (**col 20**). Size 6 mm circular needle, 80 cm long; size 5 mm crochet hook; 2 stitch holders; three 22 mm mother-of-pearl buttons.

Selvage stitches: On every row: Sl first st kwise, k last st.

St st: K on RS, p on WS.

Garter st: K every row.

Full-fashion decrease: At beg of RS row, selvage st, k1, k2tog; at end of RS row, work to last 4 sts, skp, k1, selvage st.

Skp: Sl 1 kwise, k1, pass slipped st over knitted st.

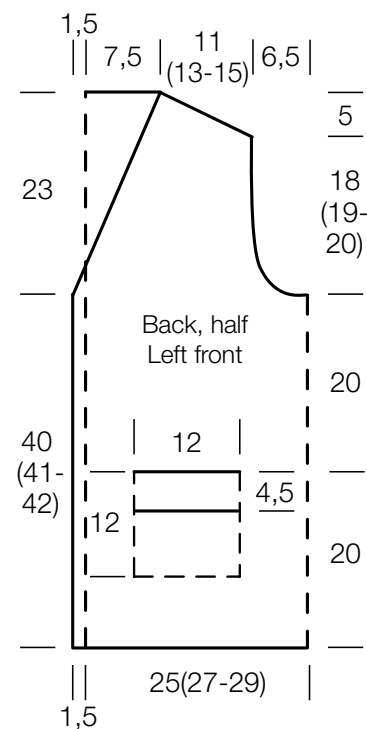
Gauge: 19 sts and 18 rows = 10 x 10 cm in garter st on size 6 mm needles.

Pocket flap: Make 2. With size 6 mm circular needle cast on 23 sts. Beg with a WS row work in garter st for 4.5 cm, ending with a RS row. Place sts on holder, cut yarn.

Back and fronts: Worked in one piece to underarm. With size 6 mm circular needle cast on 195 (211, 227) sts. Next row (WS): Selvage st, k49 (53, 57), pm, k95 (103, 111), pm, k49 (53, 57) selvage st = 50 (54, 58) sts for each front, 95 (103, 111) sts for back. Maintaining selvage sts, work in garter st for 18 cm, ending with a WS row. Next RS (buttonhole) row: Selvage st, k1, [k2tog, yo] for buttonhole, work to end. Work 2 more buttonholes in same way, spaced 8 cm apart. Cont for 2 cm, ending with a WS row. Next row (RS): Work first 37 (39, 41) sts and turn, leaving rem sts on hold. Next row (WS): P23 for pocket lining and turn, leaving rem 14 (16, 18) sts on hold. Work in St st over 23 pocket lining sts for 12 cm, ending with a RS row. Next WS (turning ridge) row: Knit. Cont in St st for 12 cm, ending with a RS row. Next, knit to last 14 (16, 18) sts of left front, turn. Next row (WS): P23 for pocket lining, turn. Work pocket lining as before, ending with a RS row. Next, work rem 14 (16, 18) sts of left front. Next row (WS): Work first 14 (16, 18) sts; with pocket flap sts held behind and parallel to working needle, ktog each pocket lining st tog with its corresponding pocket flap st; knit to next pocket lining, join pocket flap as before, work rem 14 (16, 18) sts. Cont across all sts until piece meas 40 cm from cast-on, ending with a WS

row. Divide for fronts and back: Next row (RS): Work first 50 (54, 58) sts and turn, leaving rem sts on hold. **Right front:** Shape armhole: Bind off 4 sts at beg of next WS row. Working full-fashion dec, dec 1 st at end of next 2 RS rows, then every alt RS row 4 times, then every 6th row 2 times. At same time, when working first (3rd, 4th) armhole decrease, shape neck as foll: Dec 1 st at beg of RS row, then every alt 4th and 6th row 16 times and when armhole meas 18 (19, 20) cm, shape shoulder as foll: At beg of WS rows, bind off 3 (5, 4) sts 1 time, then 3 sts 2 times, 4 sts 3 times (then 4 sts 5 times / then 5 sts 5 times). No sts rem. **Back:** Return 95 (103, 111) back sts to needle and with RS facing, rejoin yarn. Shape armholes: Bind off 4 sts at beg of next 2 rows. Working full-fashion dec, dec 1 st at each end of next 2 RS rows, then every alt RS row 4 times, then every 6th row 2 times = 71 (79, 87) sts. Work even until armhole meas 18 (19, 20) cm, ending with a WS row. Shape shoulders: At each shoulder edge bind off 3 (5, 4) sts 1 time, then 3 sts 2 times, 4 sts 3 times (then 4 sts 5 times / then 5 sts 5 times). Bind off rem 29 sts. **Left front:** Return 50 (54, 58) left front sts to needle and with RS facing, rejoin yarn. Complete as given for right front, reversing all shaping.

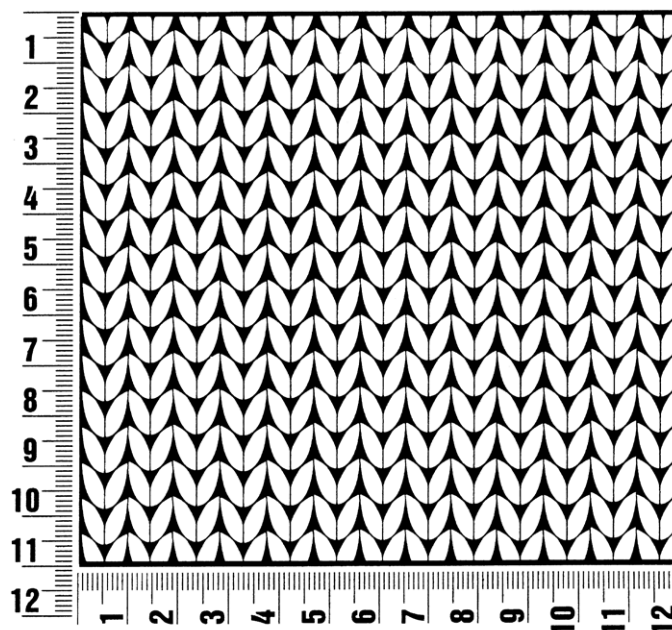
Finishing: Pin pieces to measurements and block. Sew shoulder seams. Sew pocket linings in place on WS. Using crochet hook, sl st along right front, back neck and left front edge and around each armhole edge. Sew on buttons.



Gauge Swatch

Before you begin ...

...make a gauge swatch. Use the recommended needles, yarns and pattern stitch for your gauge swatch. It should measure approx. 12 cm x 12 cm. Cast-on and bind-off rows, as well as selvage stitches should not be included in the measurement. Pin your swatch and block it as you would the finished pieces of the garment. Count stitches and rows over 10 cm. If your gauge swatch is too small, switch to larger needles. If your gauge swatch is too big, switch to smaller needles.



Abbreviations

beg = begin(ning) · **ch** = chain · **cont** = continue · **dec** = decreas(e)(ing) · **inc** = increas(e)(ing) · **k** = knit · **kwise** = as if to knit
meas = measures · **M1L** = lift strand between sts from front to back and knit this strand through the back loop · **M1R** = lift strand between sts from the back and knit this strand through the front loop · **patt** = pattern · **pm** = place marker · **p** = purl
pwise = as if to purl · **rem** = remain(ing) · **rep** = repeat(s) · **rev St st** = reverse stockinette stitch · **rnd(s)** = round(s) · **RS** = right side · **sc** = single crochet · **skp** = slip 1 stitch as if to knit, knit 1 stitch, pass slipped stitch over knitted stitch · **sk2p** = slip 1 stitch as if to knit, knit 2 together, pass slipped stitch over knitted stitch · **s2kp** = slip 2 stitches as if to knit, k 1 stitch, pass slipped stitches over knitted stitch · **sl** = slip · **st(s)** = stitch(es) · **St st** = stockinette stitch · **tbl** = through the back loop · **tog** = together · **wyib** = with yarn in back of work · **wyif** = with yarn in front of work · **WS** = wrong side · **yo(s)** = yarn over(s)

Publisher's Info

Publisher: Lana Grossa GmbH, Gaimersheim, www.lana-grossa.com

Photographer: Yannik Schütte