

# LANA GROSSA



© Lana Grossa GmbH - Photo: Wilfried Wulff, [www.wilfriedwulff.com](http://www.wilfriedwulff.com)

Design 14 – Classici 22

---

**PULLOVER  
BACCA**

# PULLOVER · BACCA

## Design 14 – Classici 22



**Size** 36/38 (40/42, 44)

Instructions are given for first size. Figures in parenthesis refer to larger sizes. When only one figure is given, it applies to all sizes.

**Materials:** 450 (500, 550) g of Lana Grossa **Bacca** (100% cotton; 120 m/50 g) in Beige (**col 6**) and 300 (350, 350) g in Light Grey (**col 6**). Size 3 and 4 mm needles; size 3 mm circular needle, 40 cm long; cable needle [cn].

**2x2 rib:** P2, k2.

**4x4 rib:** P4, k4.

**Chart patt:** Numbers at right edge of chart indicate RS rows; on WS rows, work sts as they appear. For first and last 16 sts, rep rows 1 – 10; for center 28 sts, rep rows 1 – 48.

**Stripe patt:** Work 10 rows in Light Grey, 16 rows in Beige = 26 rows. Rep these 26 rows for stripe patt throughout.

**Selvage sts:** On every row: Knit first and last st.

**Gauges:** On size 4 mm needles: 24 sts and 32 rows = 10 x 10 cm in 4x4 rib; 60 sts in chart patt meas 24 cm in width.

**Back:** With size 3 mm needles and Beige cast on 146 (154, 162) sts. Next row (WS): Selvage st, p1, \* k2, p2; rep from \* to last 4 sts, k2, p1, selvage st. Work in 2x2 rib as set by last row until piece meas 6 cm from cast-on, ending with a WS row. Change to size 4 mm needles. Next row (RS): Selvage st, k2, \* p4, k4; rep from \* to last 7 sts, p4, k2, selvage st. Work in 4x4 rib as set by last row for a total of 26 rows. Cont in 4x4 rib and work stripe patt for 104 rows, then work 10 more rows in Light Grey and piece meas 50 cm from cast-on. Place marker in first and last st on last WS row to indicate beg of armholes. Using Beige only, cont until piece meas 20 (21, 22) cm from armhole markers. Bind off all sts.

**Front:** Work same as back to end of 2x2 rib and piece meas 6 cm from cast-on, ending with a WS row. Change to size 4 mm needles. Next row (RS): Selvage st, k2, [p4, k4] 5 times, work row 1 of chart over next 60 sts, [k4, p4] 5 times, k2, selvage st (selvage st, p2, k4, [p4, k4] 5 times, work row 1 of chart over next 60 sts, [k4, p4] 5 times, k4, p2 selvage st / selvage st, k2, [p4, k4] 6 times, work row 1 of chart over next 60 sts, [k4, p4] 6 times, k2, selvage st). Work in patt as set by last row for a total of 26 rows. Cont in patt as established and work stripe patt for 104 rows, then work 10 more rows in Light Grey and piece meas 50 cm from cast-on. Place marker in first and last st on last WS row to indicate beg of armholes. Using Beige only, cont until piece meas 63 (64, 65) cm from cast-on, ending with a WS row. Shape neck: Next row (RS): Bind off center 22 sts. Working each side separately, bind off 3 sts at each neck edge 1 time, 2 sts 2 times, 1 st 5 times and when same length as back to shoulders, bind off rem 50 (54, 58) sts for each shoulder.

**Sleeves:** With size 3 mm needles and Beige cast on 74 sts. Next row (WS): Selvage st, p1, \* k2, p2; rep from \* to last 4 sts, k2, p1, selvage st. Work in 2x2 rib as set by last row until piece meas 6 cm from cast-on, ending with a WS row. Change to size 4 mm needles. Next row (RS): Selvage st, p2, k4, [p4, k4] 2 times, work center 28 sts of chart, [k4, p4] 2 times, k4, p2, selvage st. Work in patt as set by last row for a total of 16 rows. Cont in patt as established, work stripe patt and shape sleeve as foll: Inc 1 st at each end of 13 (11, 11) row, then every alt 10th and 12th row 10 times (then every 10th row 4 times, then every 8th row 9 times / then every alt 6th and 8th row 16 times) = 96 (102, 108) sts. Work increased sts into 4x4 rib. Work even until stripe patt has been worked for a total of 104 rows, then work 10 more rows with Light Grey and piece meas 47 cm from cast-on. Bind off all sts.

**Finishing:** Pin pieces to measurements and block. Sew shoulder seams. Neckband: With size 3 mm circular needle and Beige, pick up and k 112 sts evenly around neck edge. Place beg of rnd marker and join for working in rnds. Work 2x2 rib in rnds for 3 cm. Bind off all sts in rib. Sew on sleeves between markers. Sew side and sleeve seams.

# PULLOVER · BACCA

## Design 14 – Classici 22



Chart

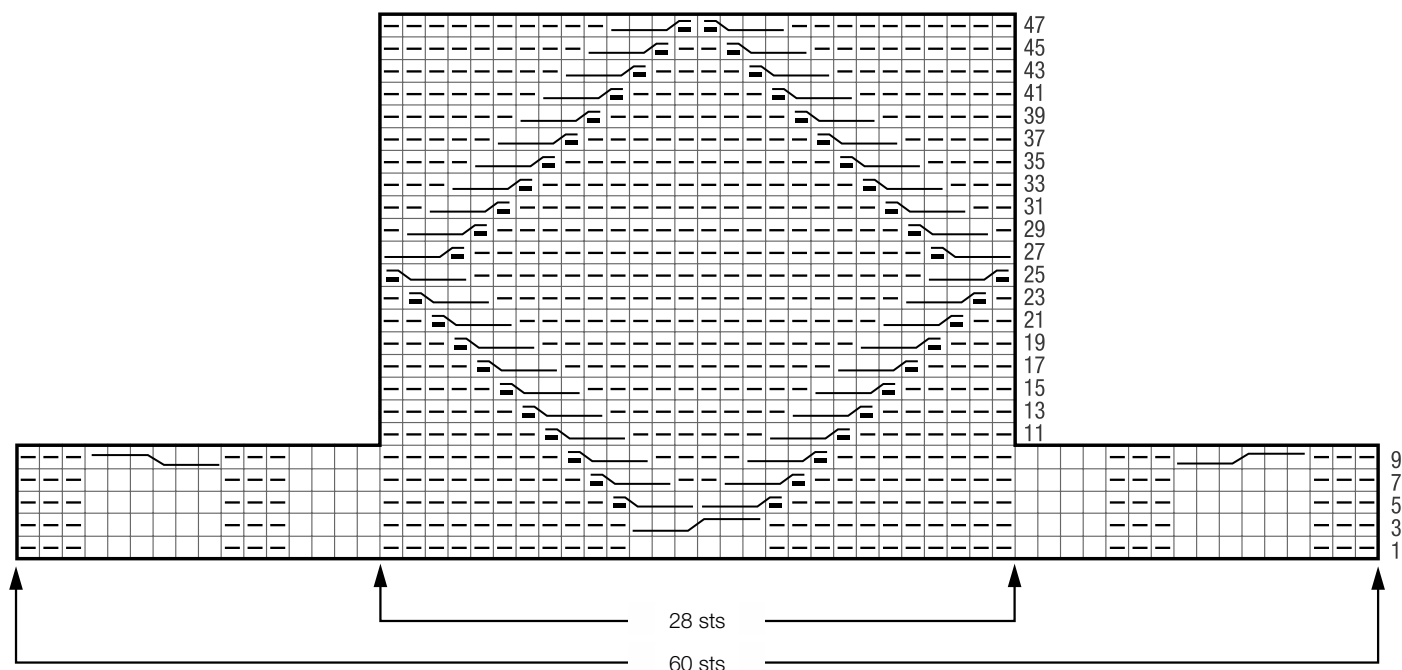
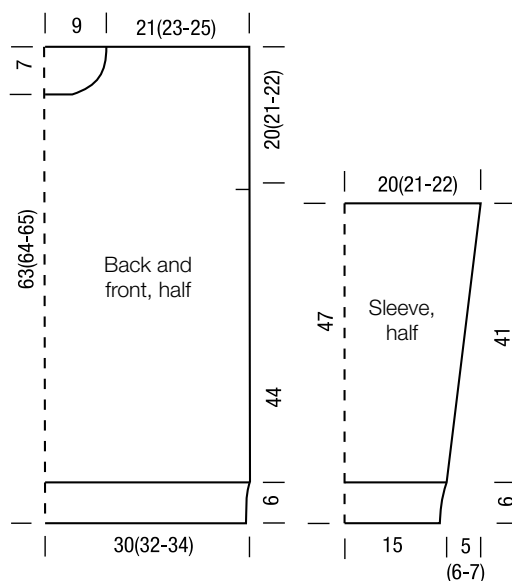


Chart key:

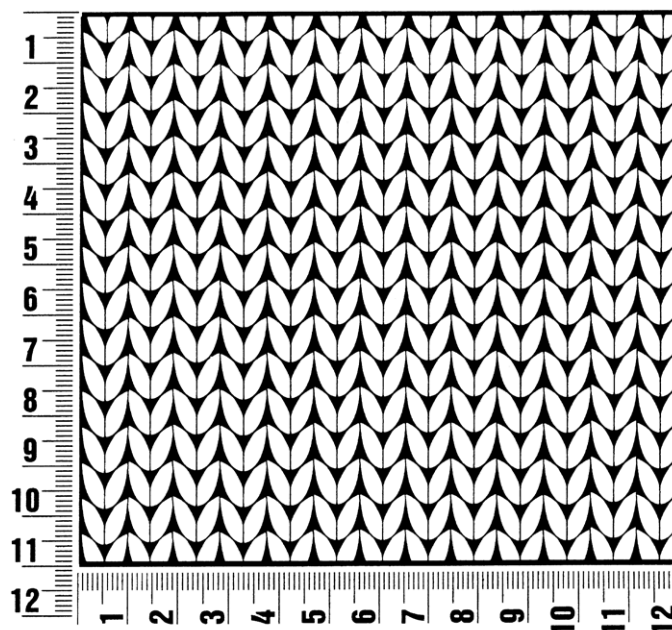
- = k1
- = p1
- = sl 3 sts to cn and hold in front of work, p1, then k3 from cn
- = sl 1 st to cn and hold in back of work, k3, then p1 from cn
- = sl 3 sts to cn and hold in front of work, k3, then k3 from cn
- = sl 3 sts to cn and hold in back of work, k3, then k3 from cn



## Gauge Swatch

### Before you begin ...

...make a gauge swatch. Use the recommended needles, yarns and pattern stitch for your gauge swatch. It should measure approx. 12 cm x 12 cm. Cast-on and bind-off rows, as well as selvage stitches should not be included in the measurement. Pin your swatch and block it as you would the finished pieces of the garment. Count stitches and rows over 10 cm. If your gauge swatch is too small, switch to larger needles. If your gauge swatch is too big, switch to smaller needles.



## Abbreviations

**beg** = begin(ning) · **ch** = chain · **cont** = continue · **dec** = decreas(e)(ing) · **inc** = increas(e)(ing) · **k** = knit · **kwise** = as if to knit  
**meas** = measures · **M1L** = lift strand between sts from front to back and knit this strand through the back loop · **M1R** = lift strand between sts from the back and knit this strand through the front loop · **patt** = pattern · **pm** = place marker · **p** = purl  
**pwise** = as if to purl · **rem** = remain(ing) · **rep** = repeat(s) · **rev St st** = reverse stockinette stitch · **rnd(s)** = round(s) · **RS** = right side · **sc** = single crochet · **skp** = slip 1 stitch as if to knit, knit 1 stitch, pass slipped stitch over knitted stitch · **sk2p** = slip 1 stitch as if to knit, knit 2 together, pass slipped stitch over knitted stitch · **s2kp** = slip 2 stitches as if to knit, k 1 stitch, pass slipped stitches over knitted stitch · **sl** = slip · **st(s)** = stitch(es) · **St st** = stockinette stitch · **tbl** = through the back loop · **tog** = together · **wyib** = with yarn in back of work · **wyif** = with yarn in front of work · **WS** = wrong side · **yo(s)** = yarn over(s)

### Publisher's Info

**Publisher:** Lana Grossa GmbH, Gaimersheim, [www.lana-grossa.com](http://www.lana-grossa.com)

**Photographer:** Wilfried Wulff, [www.wilfriedwulff.com](http://www.wilfriedwulff.com)