

# LANA GROSSA



© Lana Grossa GmbH - Photo: Wilfried Wulff, www.wilfriedwulff.com

Design 06 – Hand-dyed Special 04

---

## **CARDIGAN ALLORA HAND-DYED**

# CARDIGAN · ALLORA HAND-DYED

## Design 06 – Hand-dyed Special 04



**Size** 36 – 40 (42 – 46, 48/50)

Instructions are given for first size. Figures in parenthesis refer to larger sizes. When only one figure is given, it applies to all sizes.

**Materials:** 550 (600, 650) g of Lana Grossa **Allora hand-dyed** (76% cotton, 14% superfine Merino wool, 10% baby alpaca; 300 m/50 g) in Santra (**col 264**). Size 5 and 6 mm needles; size 5 mm circular needle, 80 cm long.

**Note:** Work with 2 strands held tog throughout.

**Selvage sts:** On every row: Purl first and last st.

**Garner st:** K every row.

**Charts A/B, C/D, E/F:** Numbers at left edge of charts indicate WS rows, numbers at right edge of charts indicate RS rows. Charts begin with a WS row. Work to patt rep, work 2 sts between arrows for patt rep, work to end of chart. For **rib patt**, work rows 1 – 3 of chart A/C/E once, then rep rows 2 and 3; for **half-brioche rib**, work rows 1 – 4 of chart B/D/F once, then rep rows 3 and 4. **Note:** 1 stitch and 1 yo are treated as 1 stitch.

**Gauge:** 16 sts and 28 rows = 10 x 10 cm in half-brioche rib with size 6 mm needles and 2 strands held tog.

**Back:** With size 5 mm needles and 2 strands held tog cast on 107 (115, 121) sts. Beg and end with a WS row work chart A for 5 rows and piece meas 2 cm from cast-on. Change to size 6 mm needles. Work chart B for 168 rows and piece meas 60 cm from end of rib patt. Place marker in first and last st on last WS row to indicate beg of armholes. Cont chart B for 56 (60, 62) rows and piece meas 20 (21, 22) cm from armhole markers. Shape neck: Next row (RS): Bind off center 23 sts. Work-

ing each side separately, bind off 3 sts at each neck edge 1 time, 2 sts 1 time, 1 st 1 time and when piece meas 3 cm from beg of neck shaping, bind off rem 36 (40, 43) sts for each shoulder.

**Left front:** With size 5 mm needles and 2 strands held tog cast on 54 (58, 62) sts. Beg and end with a WS row work chart C for 5 rows and piece meas 2 cm from cast-on. Change to size 6 mm needles. Work chart D until same length as back to armhole. Place armhole marker at right edge. Cont chart D for 43 (47, 49) rows and piece meas 16 (17, 18) cm from armhole marker. Shape neck: At beg of WS rows bind off 7 sts 1 time, 4 sts 1 time, 3 sts 1 time, 2 sts 1 time, 1 st 2 (2, 3) times and when same length as back to shoulder, bind off rem 36 (40, 43) shoulder sts.

**Right front:** Work same as left front, reversing all shaping and follow chart E/F.

**Sleeves:** With size 5 mm needles and 2 strands held tog cast on 49 (51, 55) sts. Beg and end with a WS row work chart A for 5 rows and piece meas 2 cm from cast-on. Change to size 6 mm needles. Work chart B and shape sleeve as foll: Inc 1 st at each end of 5th row, then every 8th row 11 times, then every 6th row 2 times = 77 (79, 83) sts. Work increased sts into half-brioche rib. Work even until chart B has been worked for a total of 112 rows and piece meas 40 cm from end of rib patt. Bind off all sts in patt.

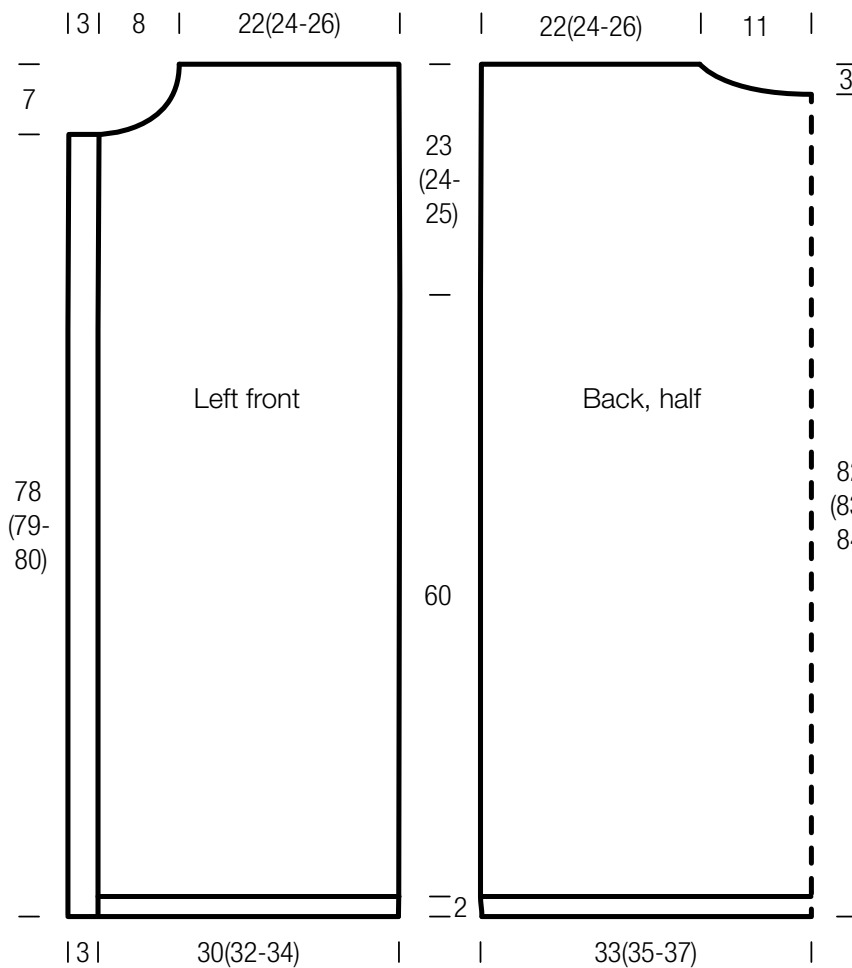
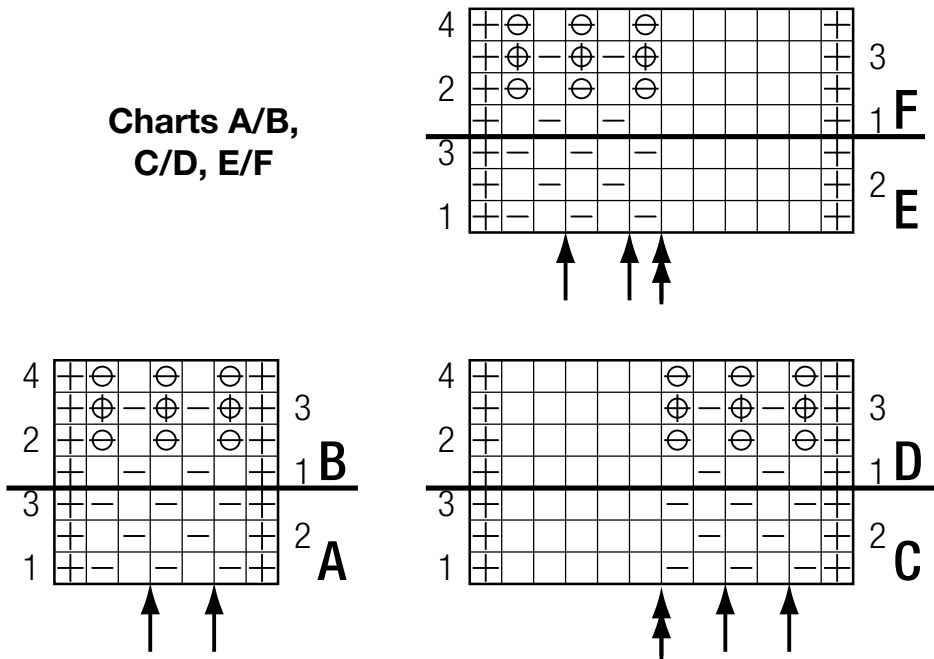
**Finishing:** Pin pieces to measurements and block. Sew shoulder seams. **Neckband:** With size 5 mm circular needle and 2 strands held tog, pick up and k 103 sts evenly along right front, back and left front neck edge. Beg and end with a WS row work chart A for 5 rows = 2 cm. Bind off all sts in patt. Sew on sleeves between markers. Sew side and sleeve seams.

# CARDIGAN · ALLORA HAND-DYED

## Design 06 – Hand-dyed Special 04



Charts A/B,  
C/D, E/F



**Chart key:**

- ⊕ = selvage st
- = k1
- ◻ = p1
- ⊗ = make a yo, then sl next st pwise
- ⊕ = ktog slipped st with its yo

## Gauge Swatch

### Before you begin ...

...make a gauge swatch. Use the recommended needles, yarns and pattern stitch for your gauge swatch. It should measure approx. 12 cm x 12 cm. Cast-on and bind-off rows, as well as selvage stitches should not be included in the measurement. Pin your swatch and block it as you would the finished pieces of the garment. Count stitches and rows over 10 cm. If your gauge swatch is too small, switch to larger needles. If your gauge swatch is too big, switch to smaller needles.



## Abbreviations

**beg** = begin(ning) · **ch** = chain · **cont** = continue · **dec** = decreas(e)(ing) · **inc** = increas(e)(ing) · **k** = knit · **kwise** = as if to knit  
**meas** = measures · **M1L** = lift strand between sts from front to back and knit this strand through the back loop · **M1R** = lift strand between sts from the back and knit this strand through the front loop · **patt** = pattern · **pm** = place marker · **p** = purl  
**pwise** = as if to purl · **rem** = remain(ing) · **rep** = repeat(s) · **rev St st** = reverse stockinette stitch · **rnd(s)** = round(s) · **RS** = right side · **sc** = single crochet · **skp** = slip 1 stitch as if to knit, knit 1 stitch, pass slipped stitch over knitted stitch · **sk2p** = slip 1 stitch as if to knit, knit 2 together, pass slipped stitch over knitted stitch · **s2kp** = slip 2 stitches as if to knit, k 1 stitch, pass slipped stitches over knitted stitch · **sl** = slip · **st(s)** = stitch(es) · **St st** = stockinette stitch · **tbl** = through the back loop · **tog** = together · **wyib** = with yarn in back of work · **wyif** = with yarn in front of work · **WS** = wrong side · **yo(s)** = yarn over(s)

### Publisher's Info

**Publisher:** Lana Grossa GmbH, Gaimersheim, [www.lana-grossa.com](http://www.lana-grossa.com)

**Photographer:** Wilfried Wulff, [www.wilfriedwulff.com](http://www.wilfriedwulff.com)