

LANA GROSSA



© Lana Grossa GmbH

Design 4 – Tücher & Co. 06

PONCHO
PIÙ BELLA & LACE SETA MULBERRY

PONCHO · PIÙ BELLA & LACE SETA MULBERRY

Design 4 – Tücher & Co. 06



Size One size

Materials: **300 g** of Lana Grossa **Più Bella** (59% baby alpaca, 20% polyamide, 15% cashmere, 6% Merino wool; 100 m/25 g) in Grey (**col 11**) and **150 g** of Lana Grossa **Lace Seta Mulberry** (35% Mulberry silk, 35% baby Alpaca, 30% extrafine Merino wool; 175 m/50 g) in Greige (**col 2**). Size 4 mm circular needle, 120 cm long; size 4 mm crochet hook.

Chart patt: Multiple of 18 + 1 + 2 selvage sts. NOTE: Selvage sts are not included on chart.

Numbers at right edge of chart indicate RS rows, numbers at left edge of chart indicate WS rows. Rep rows 1 – 12.

Loop st edging: Ch 1, sc in next st/row, * pull yarn up to create a 4 cm long loop, sc in next st/row; rep from *.

Selvage sts: On every row: Knit first and last st.

Gauge: 22 sts and 22.5 rows = 10 x 10 cm in chart patt on size 4 mm needles.

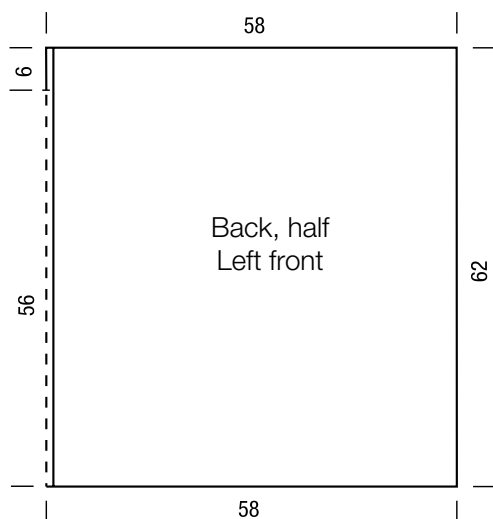
Back: With size 4 mm circular needle and Più Bella cast on 255 sts. Next row (RS): Selvage st; work row 1 of chart =

work patt rep 14 times, work to end of chart; selvage st. Maintaining selvage sts, cont to foll chart until piece meas 56 cm from cast-on, ending with a WS row. Divide for center slit: Next row (RS): Patt over first 128 sts and turn, leaving rem 127 sts on hold. Right back: Cont in patt for approx. 6 cm or until chart has been worked for a total of 140 rows and piece meas 62 cm from cast-on. Bind off all sts. Left back: Return 127 held sts to needle and with RS facing rejoin yarn. Next row (RS): Kf&b in first st, patt to end = 128 sts. Complete as given for right back. Bind off all sts.

Left front: With size 4 mm circular needle and Più Bella cast on 129 sts. Next row (RS): Selvage st; work row 1 of chart = work patt rep 7 times, work to end of chart; selvage st. Maintaining selvage sts, cont to foll chart until piece meas same length as back to shoulder. Bind off all sts.

Right front: Work same as left front.

Finishing: Pin pieces to measurements and block. Sew shoulder seams over 58 cm. Work loop stitch edging along each side edge as foll: Using crochet hook and with RS facing, sl st-join Più Bella to side edge. Work loop st for 2 rows. Fasten off. Block loop st edging.



Chart

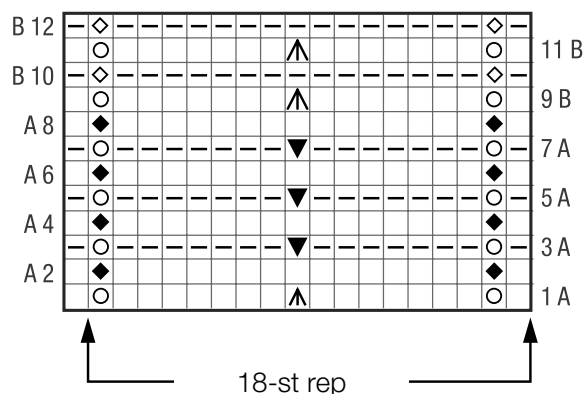


Chart key:

A = Più Bella

B = Lace Seta Mulberry

□ = k1

◻ = p1

⊙ = yo

◆ = ktbl into yo

◇ = ptbl into yo

⊠ = sk2p: sl 1 kwise, k2tog, pass slipped st over knitted st

▼ = p3tog

Gauge Swatch

Before you begin ...

...make a gauge swatch. Use the recommended needles, yarns and pattern stitch for your gauge swatch. It should measure approx. 12 cm x 12 cm. Cast-on and bind-off rows, as well as selvage stitches should not be included in the measurement. Pin your swatch and block it as you would the finished pieces of the garment. Count stitches and rows over 10 cm. If your gauge swatch is too small, switch to larger needles. If your gauge swatch is too big, switch to smaller needles.



Abbreviations

beg = begin(ning) · **ch** = chain · **cont** = continue · **dec** = decreas(e)(ing) · **inc** = increas(e)(ing) · **k** = knit · **kwise** = as if to knit
meas = measures · **M1L** = lift strand between sts from front to back and knit this strand through the back loop · **M1R** = lift strand between sts from the back and knit this strand through the front loop · **patt** = pattern · **pm** = place marker · **p** = purl
pwise = as if to purl · **rem** = remain(ing) · **rep** = repeat(s) · **rev St st** = reverse stockinette stitch · **rnd(s)** = round(s) · **RS** = right side · **sc** = single crochet · **skp** = slip 1 stitch as if to knit, knit 1 stitch, pass slipped stitch over knitted stitch · **sk2p** = slip 1 stitch as if to knit, knit 2 together, pass slipped stitch over knitted stitch · **s2kp** = slip 2 stitches as if to knit, k 1 stitch, pass slipped stitches over knitted stitch · **sl** = slip · **st(s)** = stitch(es) · **St st** = stockinette stitch · **tbl** = through the back loop · **tog** = together · **wyib** = with yarn in back of work · **wyif** = with yarn in front of work · **WS** = wrong side · **yo(s)** = yarn over(s)

Publisher's Info

Publisher: Lana Grossa GmbH, Gaimersheim, www.lana-grossa.com

Photographer: Wilfried Wulff, www.wilfriedwulff.com