

LANA GROSSA



© Lana Grossa GmbH

Design 14 – Tücher & Co. 06

SHAWL
CASHMERE LOVE

SHAWL · CASHMERE LOVE

Design 14 – Tücher & Co. 06



Size 14a: approx. 140 x 210 cm. 14b: approx. 120 x 170 cm

Materials: Lana Grossa **Cashmere Love** (50% cashmere, 50% cotton; 112 m/25 g).

14a: **450 g** in Nougat (**col 1**).

14b: **300 g** in Aubergine (**col 5**).

Size 3.5 mm circular needle, 100 cm long; cable needle [cn]; size 4 mm crochet hook for fringe.

Moss stitch: Row 1: Selvage st, [k1, p1] across row, end selvage st. Rows 2 and 4: Work sts as they appear Row 3: Selvage st, [p1, k1] across row, selvage st. Rep rows 1 – 4 for moss st.

Lace border: Work according to chart. Numbers at right edge of chart indicate RS rows; on WS rows purl all sts and yos. Work rows 1 – 48 once, then rep rows 15 – 48. **Tip:** In preparation of working k7tog on RS row, work these 7 sts very loosely on preceding WS rows 25, 31, 37 and 43.

Selvage sts: On every row: Knit first and last st.

Gauge: 24 sts and 33 rows = 10 x 10 cm in moss st on size 3.5 mm needles; 29 sts of lace border meas 13 cm in width.

Note: The size of the shawl is adjusted by working rows 15 – 48 more or less times. Adjust yarn requirements accordingly.

Shawl: With size 3.5 mm circular needle and Nougat or Aubergine cast on 3 sts. Knit 1 WS row. Next row (RS): Selvage st, M1R, k1, selvage st = 4 sts. Next row (WS): Selvage st, p2, selvage st Next row (RS): Selvage st, M1R, knit to last st, selvage st. Next row (WS): Selvage st, purl to last st, selvage st. Rep last 2 rows until 18 sts are on the needle. Next row (RS): Selvage st, M1R; work row 1 of chart = beg at arrow A, work 16 sts; selvage st. Cont to foll chart, work increased sts at right edge into chart patt, until chart is worked in its entirety. Cont working chart as established, cont working M1R inc at beg of every RS row, work increased sts in moss st. Work chart row 1 – 48 once, then work chart rows [15 – 48] 15 (12) times, then work chart rows 15 – 44 once more. Bind off all sts kwise.

Finishing: Pin piece to measurements and block. **Fringe:** For each fringe, cut 6 strands of yarn, each strand approx. 40 cm long. Insert crochet hook into fabric from WS, fold 6 strands of yarn in half to form a loop, draw loop through fabric, then draw yarn ends through loop and tighten. Attach fringe evenly spaced (approx. 1 fringe every 3 cm) along bound-off edge.

SHAWL · CASHMERE LOVE

Design 14 – Tücher & Co. 06



Chart

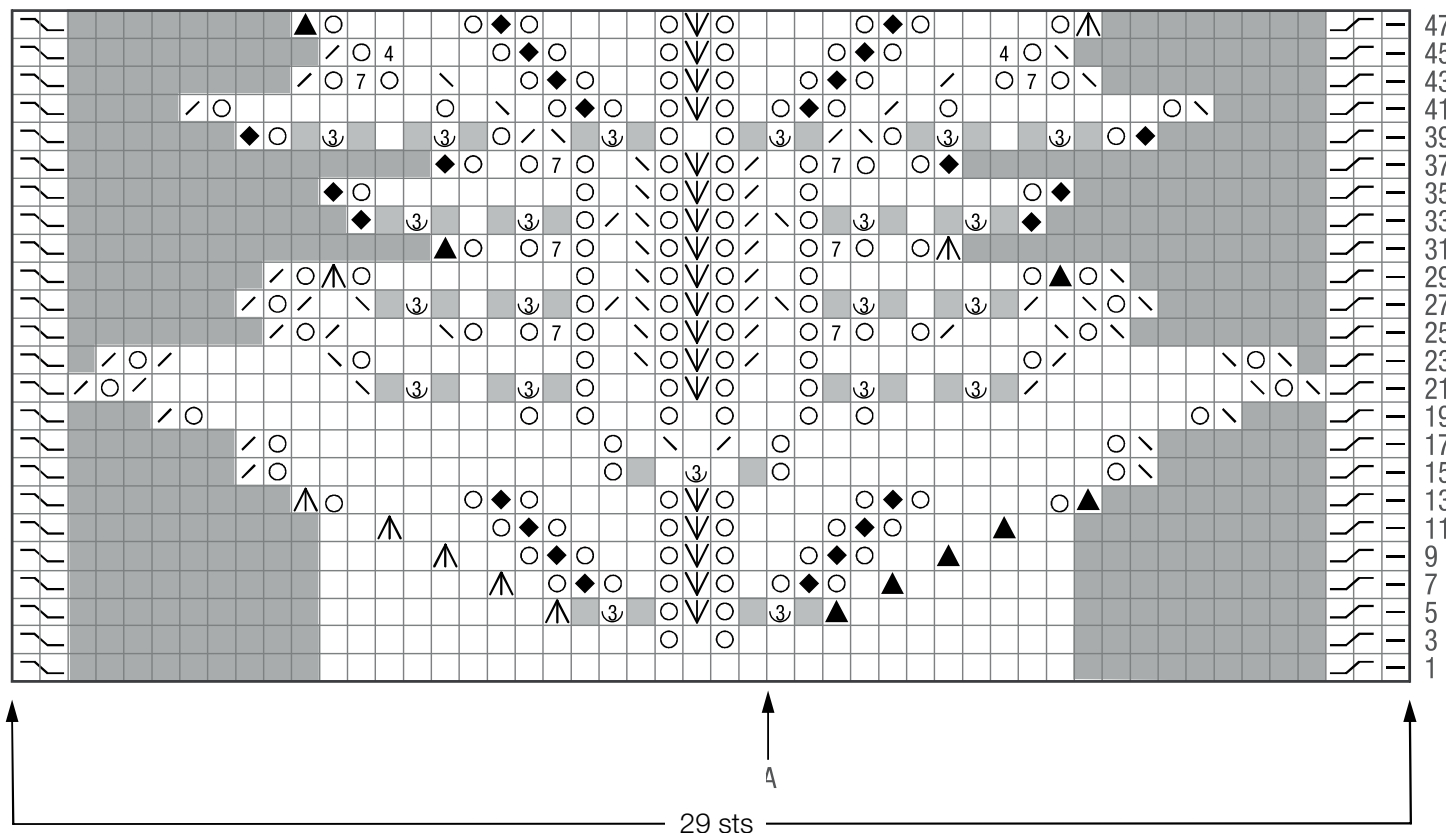
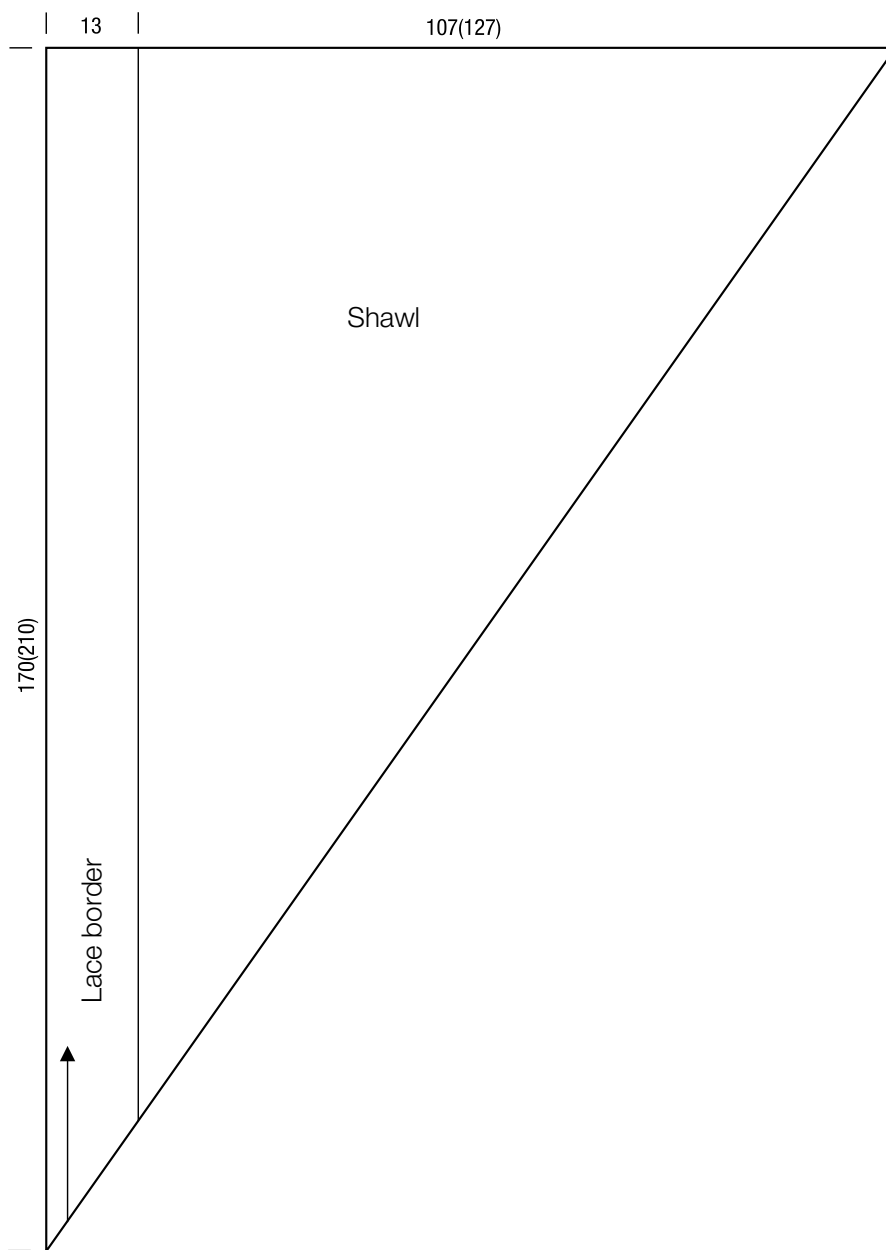


Chart key:

- = k1
- = p1
- = represents “no stitch” (included to keep st count correct)
- = k1tbl
- = yo
- = k2tog
- = skp: sl 1 kwise, k1, pass slipped st over knitted st
- = k3tog
- = sk2p: sl 1 kwise, k2tog, pass slipped st over knitted st
- = s2kp: sl 2 kwise, k1, pass slipped sts over knitted st
- = k4tog
- = k7tog
- = k1fbf in next st
- = sl 1 st to cn and hold in front of work, k1, then k1 from cn
- = sl 1 st to cn and hold in back of work, k1, then k1 from cn

SHAWL · CASHMERE LOVE

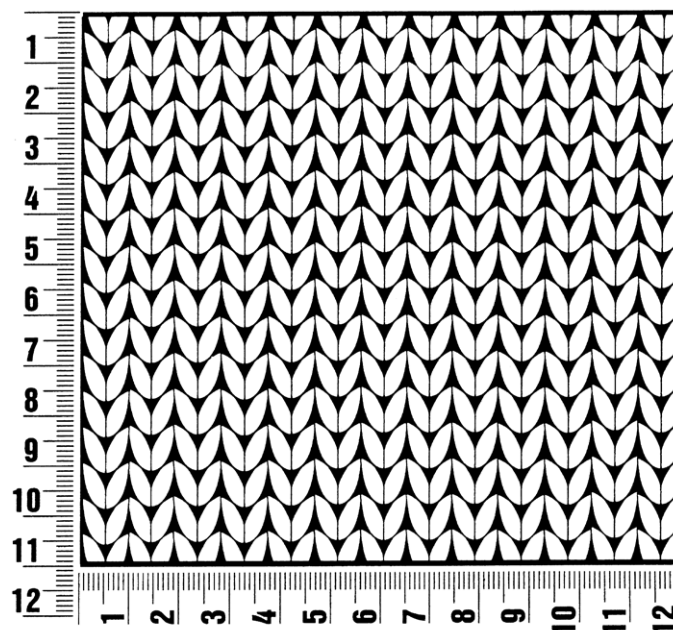
Design 14 – Tücher & Co. 06



Gauge Swatch

Before you begin ...

...make a gauge swatch. Use the recommended needles, yarns and pattern stitch for your gauge swatch. It should measure approx. 12 cm x 12 cm. Cast-on and bind-off rows, as well as selvage stitches should not be included in the measurement. Pin your swatch and block it as you would the finished pieces of the garment. Count stitches and rows over 10 cm. If your gauge swatch is too small, switch to larger needles. If your gauge swatch is too big, switch to smaller needles.



Abbreviations

beg = begin(ning) · **ch** = chain · **cont** = continue · **dec** = decompas(e)(ing) · **inc** = increas(e)(ing) · **k** = knit · **kwise** = as if to knit
meas = measures · **M1L** = lift strand between sts from front to back and knit this strand through the back loop · **M1R** = lift strand between sts from the back and knit this strand through the front loop · **patt** = pattern · **pm** = place marker · **p** = purl
pwise = as if to purl · **rem** = remain(ing) · **rep** = repeat(s) · **rev St st** = reverse stockinette stitch · **rnd(s)** = round(s) · **RS** = right side · **sc** = single crochet · **skp** = slip 1 stitch as if to knit, knit 1 stitch, pass slipped stitch over knitted stitch · **sk2p** = slip 1 stitch as if to knit, knit 2 together, pass slipped stitch over knitted stitch · **s2kp** = slip 2 stitches as if to knit, k 1 stitch, pass slipped stitches over knitted stitch · **sl** = slip · **st(s)** = stitch(es) · **St st** = stockinette stitch · **tbl** = through the back loop · **tog** = together · **wyib** = with yarn in back of work · **wyif** = with yarn in front of work · **WS** = wrong side · **yo(s)** = yarn over(s)

Publisher's Info

Publisher: Lana Grossa GmbH, Gaimersheim, www.lana-grossa.com

Photographer: Wilfried Wulff, www.wilfriedwulff.com