



© Lana Grossa GmbH

Design 36 – Merino Edition 03

SLIPOVER MERINO SUPERIORE

SLIPOVER · MERINO SUPERIORE

Design 36 – Merino Edition 03



Size 36/38 (40/42, 44/46, 48/50, 52/54)

Instructions are given for first size. Figures in parenthesis refer to larger sizes. When only one figure is given, it applies to all sizes.

Materials: 350 (350, 400, 450, 450) g of Lana Grossa **Merino Superiore** (100% extrafine Merino wool; 180 m/50 g) in Bordeaux (col 27). Size 3.5 mm needles.

Rib patt: K1, p1.

Moss stitch: Row 1: * P1, k1; rep from *. Row 3: * K1, p1; rep from *. Rows 2 and 4: Work sts as they appear. Rep rows 1 – 4.

Garter st: K every row.

Rev St st: P on RS, k on WS.

Two-stitch selvage: On WS row: Sl first and last 2 sts pwise wyif. On RS row: Knit first and last 2 sts.

8-st edge patt: At beg of row, two-st selvage st, 5 sts in garter st, 1 st in rev St st; at end of row, work to last 8 sts, 1 st in rev St st, 5 sts in garter st, two-stitch selvage.

Gauge: 26 sts and 36 rows = 10 x 10 cm.

Back: Cast on 169 (179, 189, 201, 215) sts. Next row (RS): * K1, p1; rep from *, end k1. Work in rib patt as set by last row until piece meas 6 cm from cast-on, ending with a WS row. Work in moss st and shape sides as foll: Dec 1 st at each end of 7th row, then every 8th row 13 (13, 13, 14, 15) times = 141 (151, 161, 171, 183) sts. Work even until piece meas 40 cm from cast-on, ending with a RS row. Shape armholes: Next dec row (WS): Two-stitch selvage, 5 sts in garter st, skp; patt

to last 9 sts, k2tog, 5 sts in garter st, two-stitch selvage. Rep dec row every foll WS row 20 (22, 24, 26, 29) more times = 99 (105, 111, 117, 123) sts. After all armhole shaping is complete, work 8-st edge patt at each armhole edge and when piece meas 63 (64.5, 66, 67.5, 69) cm from cast-on, work center 57 (57, 57, 63, 63) sts in garter st for 3 cm. Work I-cord bind-off: Cast on 2 sts onto left needle. * K1, k2tog tbl, transfer 2 sts from right needle to left needle; rep from * to end. Skp last 2 sts, cut yarn and fasten off last st.

Front: Work same as back to armhole shaping. Shape armholes same as for back. At same time, on first row of armhole shaping, shape V-neck as foll: Patt to center st, k1f&b, patt to end = 140 (150, 160, 170, 180) sts. Divide work at center = 70 (75, 80, 85, 90) sts each side and work **right front** first as foll: Next row (WS): Patt to 9 sts before center, k2tog, 5 sts in garter st, two-stitch selvage and turn, leaving rem sts on hold. Rep dec row every foll WS row 4 (4, 4, 6, 7) times, then every alt WS row 15 times. After all neck shaping is complete, work 8-st edge patt at neck edge and when same length as back to shoulder, bind off rem 30 (33, 36, 37, 39) shoulder sts. **Left front:** Return 70 (75, 80, 85, 90) held left front sts to needle and with WS facing rejoin yarn. Complete as given for right front, reversing all shaping and working neck decs at beg of WS rows as foll: Two-stitch selvage, 5 sts in garter st, skp, patt to end.

Pocket: Cast on 31 (31, 33, 33, 35) sts. Work in moss st for 9 cm, then work in rib patt for 2 cm. Work I-cord bind-off (see back).

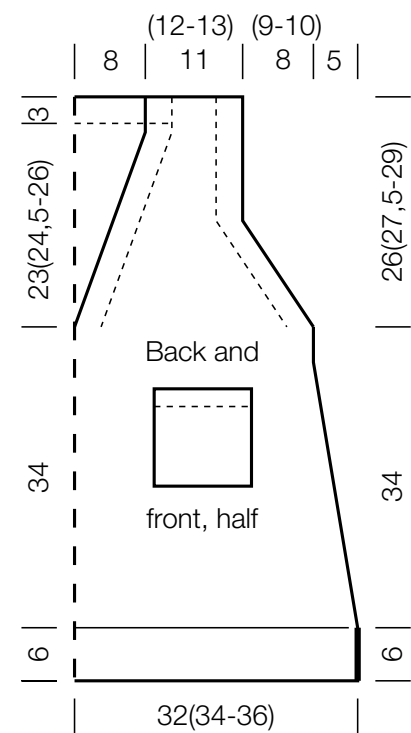
Finishing: Pin pieces to measurements and block. Sew shoulder and side seams, leaving bottom 6 cm of side seams open for split hem. Referring to schematic for placement, sew pocket to front.

SLIPOVER · MERINO SUPERIORE

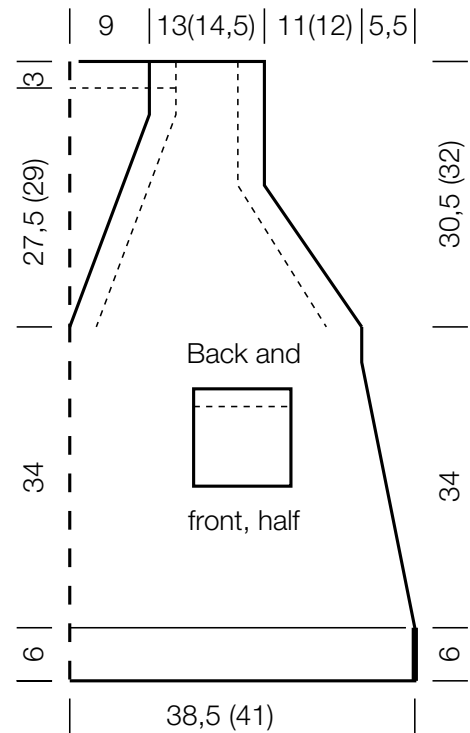
Design 36 – Merino Edition 03



Size 36/38 (40/42, 44/46)



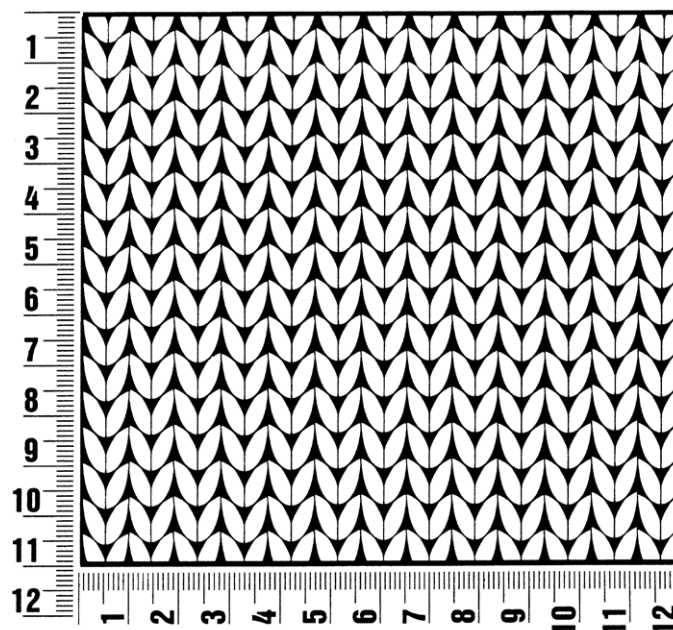
Size 48/50 (52/54)



Gauge Swatch

Before you begin ...

...make a gauge swatch. Use the recommended needles, yarns and pattern stitch for your gauge swatch. It should measure approx. 12 cm x 12 cm. Cast-on and bind-off rows, as well as selvage stitches should not be included in the measurement. Pin your swatch and block it as you would the finished pieces of the garment. Count stitches and rows over 10 cm. If your gauge swatch is too small, switch to larger needles. If your gauge swatch is too big, switch to smaller needles.



Abbreviations

beg = begin(ning) · **ch** = chain · **cont** = continue · **dec** = decreas(e)(ing) · **inc** = increas(e)(ing) · **k** = knit · **kwise** = as if to knit
meas = measures · **M1L** = lift strand between sts from front to back and knit this strand through the back loop · **M1R** = lift strand between sts from the back and knit this strand through the front loop · **patt** = pattern · **pm** = place marker · **p** = purl
pwise = as if to purl · **rem** = remain(ing) · **rep** = repeat(s) · **rev St st** = reverse stockinette stitch · **rnd(s)** = round(s) · **RS** = right side · **sc** = single crochet · **skp** = slip 1 stitch as if to knit, knit 1 stitch, pass slipped stitch over knitted stitch · **sk2p** = slip 1 stitch as if to knit, knit 2 together, pass slipped stitch over knitted stitch · **s2kp** = slip 2 stitches as if to knit, k 1 stitch, pass slipped stitches over knitted stitch · **sl** = slip · **st(s)** = stitch(es) · **St st** = stockinette stitch · **tbl** = through the back loop · **tog** = together · **wyib** = with yarn in back of work · **wyif** = with yarn in front of work · **WS** = wrong side · **yo(s)** = yarn over(s)

Publisher's Info

Publisher: Lana Grossa GmbH, Gaimersheim, www.lana-grossa.com

Photographer: Nicolas Olonetzky, www.olonetzky.com