



© Lana Grossa GmbH

Design 10 – Classici 27

PULLOVER
COOL WOOL VINTAGE

PULLOVER · COOL WOOL VINTAGE

Design 10 – Classici 27



Size 36/38 (40/42, 44)

Instructions are given for first size. Figures in parenthesis refer to larger sizes. When only one figure is given, it applies to all sizes.

Materials: **200 (250, 250) g** of Lana Grossa **Cool Wool Vintage** (100% extrafine Merino wool; 160 m/50 g) in Patina Green (**col 7380**), **200 (200, 250) g** in Green Grey (**col 7368**) and **100 (150, 150) g** in Light Grey (**col 7369**). Size 3.5 and 4 mm needles; size 3.5 mm circular needle, 40 cm long.

St st: K on RS, p on WS.

Garter st: K every row.

Selva ge sts: On every row: Knit first and last st.

Full-fashion decrease: At beg of RS row, k4, skp; at end of RS row, work to last 6 sts, k2tog, k4.

Full-fashion increase: On RS row: M1R, 2 sts in from each edge.

Short-rows: Always work a yo at beg of row. Work yo tog with next st as k2tog on RS rows, p2tog on WS rows as you come to them.

Gauge: 23 sts and 32 rows = 10 x 10 cm in St st on size 4 mm needles.

Back: With size 3.5 mm needles and Patina Green cast on 130 (140, 150) sts. Beg and end with a WS row work in garter st for 3 rows. Change to size 4 mm needles. Work in St st and shape curved hem as foll: Row 1 (RS): K80 (86, 92), turn. Row 2 (WS): Yo, p30 (32, 34), turn. Cont working short-rows in this manner, working 5 additional sts at end of next 10 RS and WS rows (6 additional sts at end of next 4 RS and WS rows, 5 additional sts at end of next 6 RS and WS rows / 6 additional sts at end of next 8 RS and WS rows, 5 additional sts at end of next 2 RS and WS rows). Working first and last st as selva ge sts, work in St st across all sts until piece meas 19 cm from cast-on, measured along side edge. Change to Green Grey and cont in St st until piece meas 37 cm from

cast-on, measured along side edge. Place marker in first and last st on last WS row to indicate beg of armholes. Cont until piece meas 1 cm from armhole markers, ending with a WS row. Change to Light Grey. Cont until piece meas 17 (18, 19) cm from armhole markers, ending with a WS row. Shape shoulders: At each shoulder edge bind off 9 (10, 11) sts 5 times. Bind off rem 40 sts.

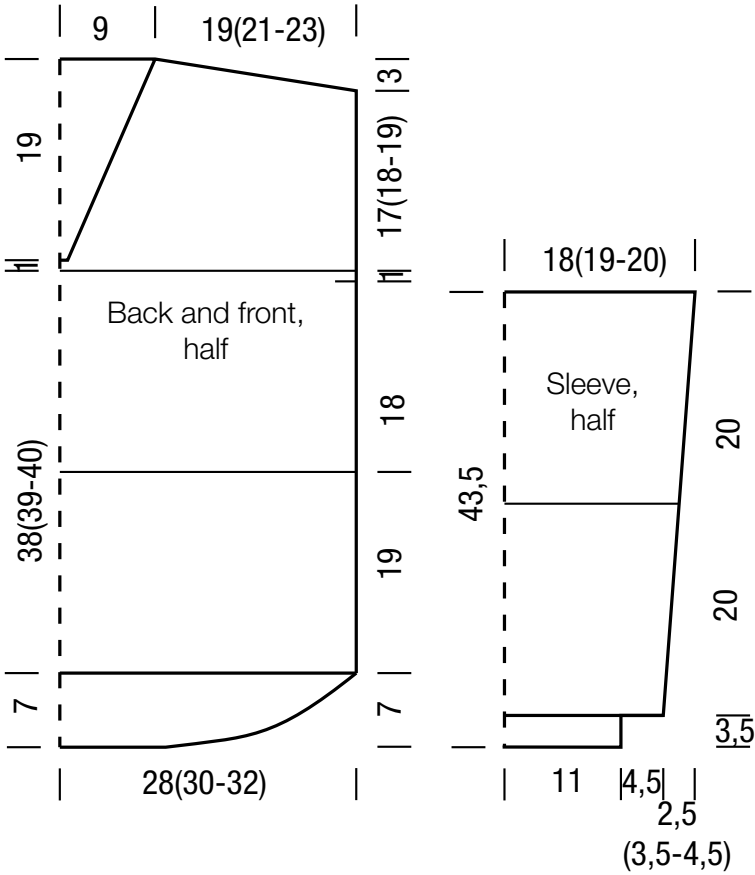
Front: With size 3.5 mm needles and Patina Green cast on 130 (140, 150) sts. Beg and end with a WS row work in garter st for 3 rows. Change to size 4 mm needles. Working first and last st as selva ge sts, work in St st until piece meas 19 cm from cast-on, ending with a WS row. Change to Green Grey and cont in St st until piece meas 37 cm from cast-on. Place marker in first and last st on last WS row to indicate beg of armholes. Cont until piece meas 1 cm from armhole markers, ending with a WS row. Change to Light Grey and cont in St st for 2 (4, 6) rows, ending with a WS row. Shape V-neck: Next row (RS): Bind off center 2 sts. Working each side separately and working full-fashion dec, dec 1 st at each neck edge every alt 2nd and 4th row 19 times and when same length as back to shoulders, shape shoulders same as for back.

Sleeves: With size 3.5 mm needles and Patina Green cast on 54 sts. Beg and end with a WS row and working first and last st as selva ge sts, work in St st for 13 rows. Change to size 4 mm needles. Next row (RS): Selva ge st, work in St st to last st, selva ge st, increasing 20 sts evenly across row = 74 sts. Maintaining selva ge sts, cont in St st and shape sleeve as foll: Working full-fashion inc, inc 1 st at each end of 29 (17, 15)th row from needle change, then every 20th row 4 times (then every 14th row 7 times, then every 12th row 7 times, then every 10th row 2 times) = 84 (90, 94) sts. At same time, when piece meas 20 cm from needle change, work remainder of sleeve in Green Grey and when piece meas 40 cm from needle change, bind off all sts.

Finishing: Pin pieces to measurements and block. Sew shoulder seams. **Neck edging:** With size 3.5 mm circular needle and Light Grey, pick up and k 126 sts evenly around neck edge. Place beg of rnd marker and join for working in rnds. Knit 4 rnds. Loosely bind off all sts.

PULLOVER · COOL WOOL VINTAGE

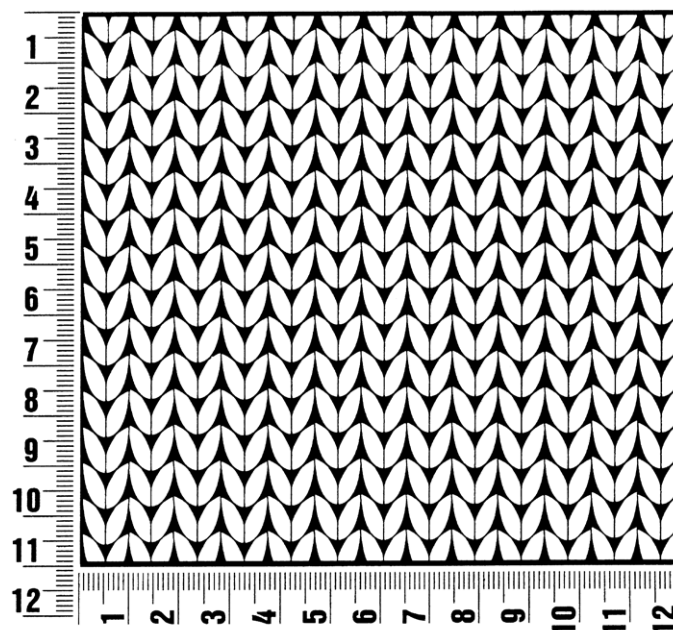
Design 10 – Classici 27



Gauge Swatch

Before you begin ...

...make a gauge swatch. Use the recommended needles, yarns and pattern stitch for your gauge swatch. It should measure approx. 12 cm x 12 cm. Cast-on and bind-off rows, as well as selvedge stitches should not be included in the measurement. Pin your swatch and block it as you would the finished pieces of the garment. Count stitches and rows over 10 cm. If your gauge swatch is too small, switch to larger needles. If your gauge swatch is too big, switch to smaller needles.



Abbreviations

beg = begin(ning) · **ch** = chain · **cont** = continue · **dec** = decreas(e)(ing) · **inc** = increas(e)(ing) · **k** = knit · **kwise** = as if to knit
meas = measures · **M1L** = lift strand between sts from front to back and knit this strand through the back loop · **M1R** = lift strand between sts from the back and knit this strand through the front loop · **patt** = pattern · **pm** = place marker · **p** = purl
pwise = as if to purl · **rem** = remain(ing) · **rep** = repeat(s) · **rev St st** = reverse stockinette stitch · **rnd(s)** = round(s) · **RS** = right side · **sc** = single crochet · **skp** = slip 1 stitch as if to knit, knit 1 stitch, pass slipped stitch over knitted stitch · **sk2p** = slip 1 stitch as if to knit, knit 2 together, pass slipped stitch over knitted stitch · **s2kp** = slip 2 stitches as if to knit, k 1 stitch, pass slipped stitches over knitted stitch · **sl** = slip · **st(s)** = stitch(es) · **St st** = stockinette stitch · **tbl** = through the back loop · **tog** = together · **wyib** = with yarn in back of work · **wyif** = with yarn in front of work · **WS** = wrong side · **yo(s)** = yarn over(s)

Publisher's Info

Publisher: Lana Grossa GmbH, Gaimersheim, www.lana-grossa.com

Photographer: Susan Buth